

CURVE NO.	ARC LENGTH	RADIUS	DELTA	CHORD BEARING	CHORD LENGTH
(28)	78.54	50.00	90°00'00"	N19°02'52"E	70.71
(29)	253.76	359.00	40°30'00"	S84°17'52"W	248.51
(30)	288.89	429.00	38°35'01"	S83°20'23"W	283.47

LEGEND

⊙ INDICATES CONCRETE MONUMENT

(21) INDICATES CURVE NUMBER

- NOTES:**
- BEARINGS ARE BASED ON HURON RIVER ACRES NO. 4 PER LIBER 19 OF PLATS, PAGES 35 & 36, WASHTENAW COUNTY RECORDS.
 - BEARINGS OF THE SETBACK LINES ARE PARALLEL TO THE UNIT BOUNDARIES UNLESS OTHERWISE NOTED.
 - ALL PUBLIC STREETS AND UTILITY IMPROVEMENTS MUST BE BUILT.
 - UNIT 21 HAS BEEN INTENTIONALLY OMITTED.

PROPOSED DATE: JUNE 24, 1996

ROBERT G. MACOMBER
 PROFESSIONAL SURVEYOR NO. 27453
 ATWELL-HICKS, INC.
 540 AVIS DRIVE
 ANN ARBOR, MICHIGAN 48108
 TELEPHONE - (313) 994-4000

**SURVEY PLAN
 NEWPORT HILLS
 UNITS 17-20 AND 22-28**

ATWELL-HICKS, INC.
 CIVIL ENGINEERING • SURVEYING • PLANNING
 ENVIRONMENTAL SERVICES
 313-994-4000 • FAX NO. 313-994-1599
 ANN ARBOR, MICHIGAN

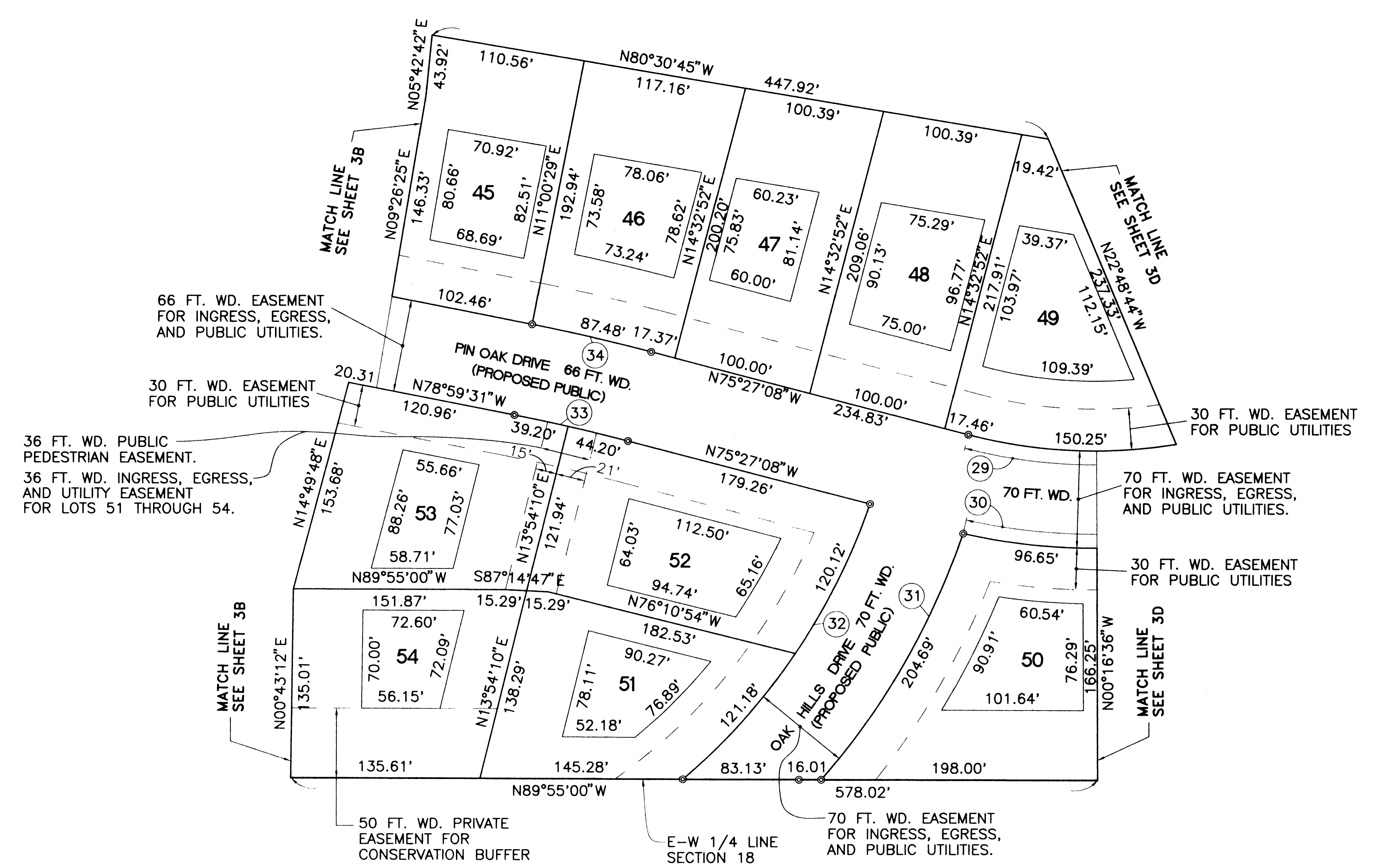
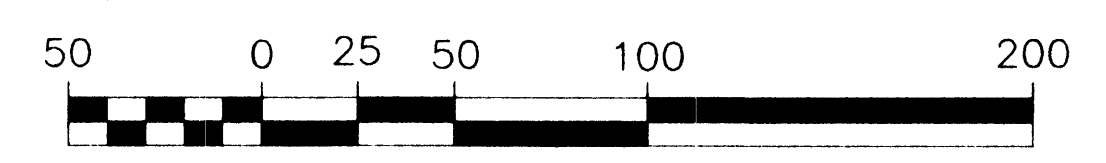
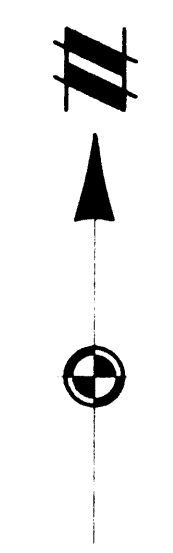
SECTION IN THE N 1/2 OF 18
 TOWN 2 SOUTH, RANGE 6 EAST
 CITY OF ANN ARBOR
 WASHTENAW COUNTY, MICHIGAN

CLIENT R.E.M. VERO INC.
 9094001.dwg
 NEWPORT HILLS PHASE 3
 LIBER: 2582 PAGE: 832 1992-02-10

8851CD04

REVISIONS
 DATE 6-24-96

1" = 50 FEET
 DR. CH. RM
 BOOK
 JOB 38851
 FILE NO. 140A-190-3D



CURVE CHART					
CURVE NO.	ARC LENGTH	RADIUS	DELTA	CHORD BEARING	CHORD LENGTH
29	253.76'	359.00'	40°30'00"	S84°17'52" W	248.51'
30	288.89'	429.00'	38°35'01"	S83°20'23" W	283.47'
31	204.69'	520.00'	22°33'12"	S29°52'41" W	203.37'
32	241.30'	450.00'	30°43'26"	S34°06'55" W	238.42'
33	83.40'	1350.00'	03°32'23"	N77°13'19" W	83.39'
34	87.48'	1416.00'	03°32'23"	N77°13'19" W	87.47'

LEGEND

⊙ INDICATES CONCRETE MONUMENT

Ⓢ INDICATES CURVE NUMBER

- NOTES:
- BEARINGS ARE BASED ON HURON RIVER ACRES NO. 4 PER LIBER 19 OF PLATS, PAGES 35 & 36, WASHTENAW COUNTY RECORDS.
 - BEARINGS OF THE SETBACK LINES ARE PARALLEL TO THE UNIT BOUNDARIES UNLESS OTHERWISE NOTED.
 - ALL PUBLIC STREETS AND UTILITY IMPROVEMENTS MUST BE BUILT.
 - LOTS 50, 51 AND 52 WILL NOT ACCESS OFF OAK HILLS DRIVE UNTIL IT IS EXTENDED TO THE SOUTH.

PROPOSED DATE: JUNE 24, 1996

ROBERT G. MACOMBER
 PROFESSIONAL SURVEYOR NO. 27453
 ATWELL-HICKS, INC.
 540 AVIS DRIVE
 ANN ARBOR, MICHIGAN 48108
 TELEPHONE - (313) 994-4000

**SURVEY PLAN
 NEWPORT HILLS
 UNITS 45-54**