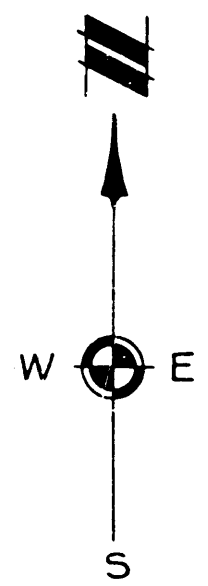


FOR RECORD
 APR 28 9 01 AM '68
 PATRICIA NEWKIRK HARDY
 REGISTER OF DEEDS
 WASHINGTON COUNTY, MICH.

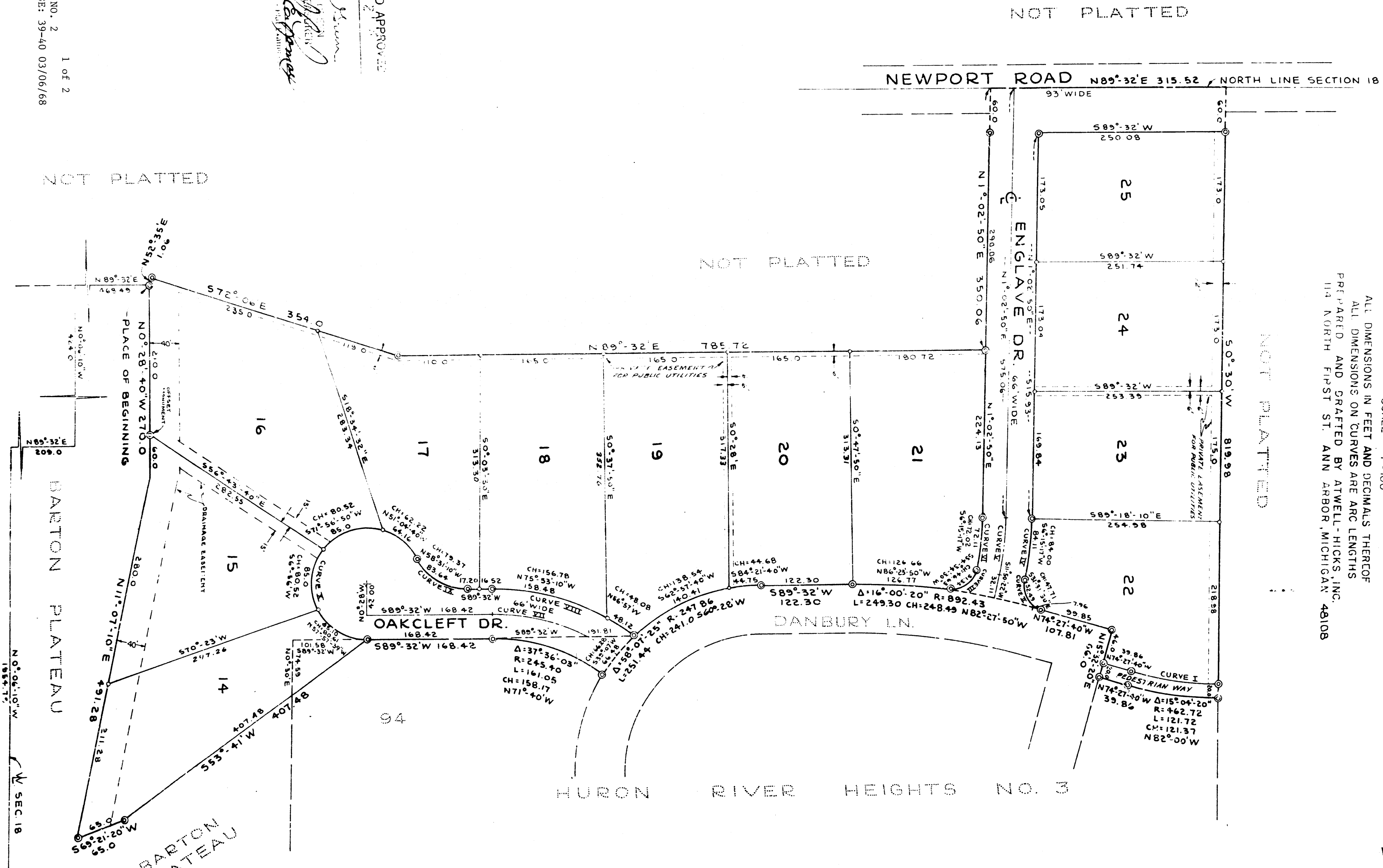
ORIGINAL
BARTON PLATEAU NO. 2
 A SUBDIVISION OF PART OF THE NW 1/4 OF SECTION 18, T2S,
 R6E, ANN ARBOR TOWNSHIP, WASHINGTON COUNTY, MICHIGAN;
 BEING A REPEAT OF PART OF LOT 94 OF HURON RIVER
 HEIGHTS NO. 3 AND PART OF THE NW 1/4 OF SECTION 18, T2S,
 R6E, ANN ARBOR TOWNSHIP, WASHINGTON COUNTY, MICHIGAN

ALL DIMENSIONS IN FEET AND DECIMALS THEREOF
 PREPARED AND DRAFTED BY ATWELL-HICKS, INC.
 114 NORTH FIRST ST. ANN ARBOR, MICHIGAN 48108

SCALE 1" = 100'
 0 100' 200' 300'



CURVE DATA					
CURVE NO.	DELTA	RADIUS	ARC LENGTH	CHORD BEARING	CHORD LENGTH
I	15°-04'-20"	442.72	116.46	N82°-00'W	116.12
II	85°-55'-30"	35.00	52.45	S31°-30'E	47.71
III	86°-12'-30"	34.12	51.34	S54°-34'-30"W	46.63
IV	10°-25'	462.72	114.8	S 6°-51'-20"W	60.48
V	10°-25'	429.72	78.11	S 6°-51'-20"W	78.01
VI	10°-25'	396.72	72.11	S 6°-51'-20"W	72.02
VII	37°-05'-22"	278.40	181.88	N71°-46'-11"W	178.40
VIII	38°-00'-50"	111.40	209.90	N11°-12'-12"W	98.202
IX	05°-55'-54"	75.0	43.88	N01°-18'-58"N	75.37
X	05°-55'-54"	75.0	43.88	N05°-02'-18"E	82.121



RECEIVED FOR RECORD
 APR 28 9 01 AM '68
 PATRICIA NEWKIRK HARDY
 REGISTER OF DEEDS
 WASHINGTON COUNTY, MICH.
 Liber 19 of Plate
 Page 33 of 34

P0479001
 BARTON PLATEAU NO. 2
 LIBER: 18 PAGE: 39-40 03/06/68
 1 OF 2

EXAMINED AND APPROVED
 Date 4/15/68
 Division Survey
 State of Michigan
 By Richard E. Linder, Surveyor

FILED IN THESE...

ORIGINAL
BARTON PLATEAU NO. 2
A SUBDIVISION OF PART OF THE NW 1/4 OF SECTION 18, T2S,
R6E, ANN ARBOR TOWNSHIP, WASHTENAW COUNTY, MICHIGAN;
BEING A REPLAT OF PART OF LOT 94 OF HURON RIVER
HEIGHTS NO.3 AND PART OF THE NW 1/4 OF SECTION 18, T2S,
R6E, ANN ARBOR TOWNSHIP, WASHTENAW COUNTY, MICHIGAN

PREPARED AND DRAFTED BY ATWELL-HICKS, INC.
114 NORTH FIRST ST. ANN ARBOR, MICHIGAN 48108

DEDICATION

KNOW ALL MEN BY THESE PRESENTS, that we Donald T. Cunningham and Virginia H. Cunningham his wife, Benno G. Fricke and Norma L. Fricke his wife, and the University of Michigan a Constitutional Corporation by Wilbur K. Pierpont Vice-President as proprietors, have caused the land embraced in the annexed plat to be surveyed, laid out and platted to be known as BARTON PLATEAU NO. 2 a subdivision of part of the NW 1/4 of Section 18, T2S, R6E, Ann Arbor Township, Washtenaw County, Michigan; being a replat of part of Lot 94 of Huron River Heights No. 3 and part of the NW 1/4 of Section 18, T2S, R6E, Ann Arbor Township, Washtenaw County, Michigan and that the Road Drives and Pedestrian Way as shown on said plat are hereby dedicated to the use of the public and the easements indicated on said plat are not dedicated to the public but reserved for public utilities and any other use designated hereon and no permanent structures are to be located within said easement.

Signed in the Presence of:

William B. Murphy
Barbara J. Gordon
Witness

Donald T. Cunningham
1241 S. Maple Road
Ann Arbor, Michigan

Virginia H. Cunningham
1241 S. Maple Road
Ann Arbor, Michigan

Benno G. Fricke
2749 Oakcleft Drive
Ann Arbor, Michigan

Norma L. Fricke
2749 Oakcleft Drive
Ann Arbor, Michigan

Signed in the Presence of:

Dorothy Bice
E. A. Commiskey
Witness

UNIVERSITY OF MICHIGAN
Investment Office
Wilbur K. Pierpont, Vice-President
500 South State Street
Ann Arbor, Michigan

ACKNOWLEDGMENT

STATE OF MICHIGAN)
County of Washtenaw) ss.

On this 6th day of March, A.D., 1968 before me, a Notary Public in and for said county, personally came the above named Donald T. Cunningham and Virginia H. Cunningham his wife, Benno G. Fricke and Norma L. Fricke his wife, known to me to be the persons who executed the above dedication, and acknowledged the same to be their free act and deed.

Barbara J. Gordon
Notary Public, Washtenaw Co, Mich.

My Commission expires July 27, 1968

COUNTY TREASURER'S CERTIFICATE
Office of County Treasurer, Washtenaw County

I hereby certify that there are no tax liens or titles held by the State on the lands described hereon, and that there are no tax liens or titles held by individuals on said lands, for the five years preceding the 19th day of March, 1968 and that the taxes for said period of five years are all paid as shown by the records of this office. This certificate does not apply to taxes, if any, now in process of collection by township, city or village collecting officers.

Sylvester A. Leonard
Sylvester A. Leonard, County Treasurer

APPROVAL BY COUNTY PLANNING COMMISSION

This plat was approved by the Washtenaw County Metropolitan Planning Commission at a meeting held on the 14th day of April, 1968.

William G. Hayes, Chairman
James W. Gallagher, Secretary
Eugene Kramer, Director

ACKNOWLEDGMENT

STATE OF MICHIGAN)
County of Washtenaw) ss.

On this 6th day of March, A.D., 1968, before me, a Notary Public in and for said county appeared Wilbur K. Pierpont to me personally known, who being by me duly sworn did say that he is the Vice-President of the University of Michigan, a Constitutional Corporation, and that said instrument was signed in behalf of said Corporation by authority of its Board of Regents and the said Wilbur K. Pierpont acknowledged said instrument to be the free act and deed of said Corporation.

Elizabeth R. Solomon
Notary Public, Washtenaw County, Michigan
My Commission expires Sept. 26, 1969

CERTIFICATE OF MUNICIPAL APPROVAL

This plat was approved by the Township Board of the Township of Ann Arbor at a meeting held June 10, 1968 and is in compliance with Section 19a and that the width of lots conforms with requirements of Section 30, Act 172 of 1929 as amended.

Laurance Frederick, Clerk

APPROVAL BY COUNTY PLAT BOARD

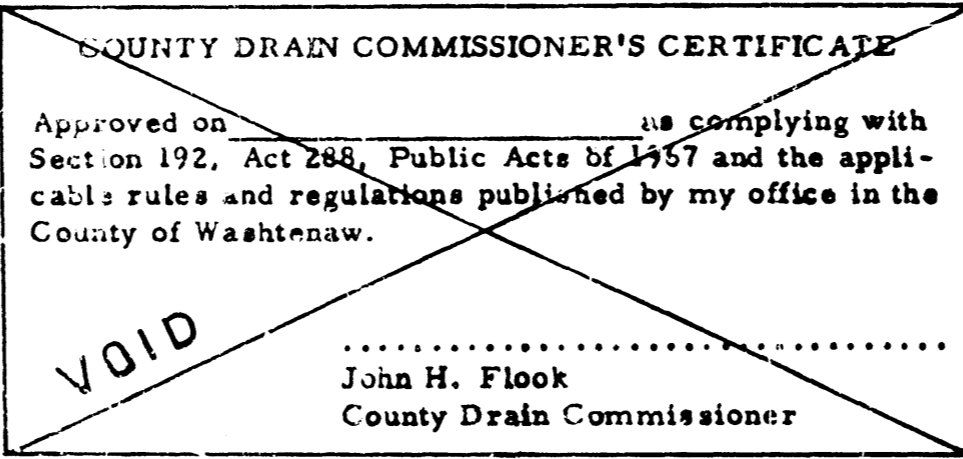
This plat was approved on the 10th day of July, 1968, by the Washtenaw County Plat Board.

Patricia Newkirk Hardy, J. Martin Remppe
County Register of Deeds Auditor

John H. Flook, County Drain Commissioner
Herbert G. Loeffler, Auditor

DESCRIPTION OF LAND PLATTED

The land embraced in the annexed plat of BARTON PLATEAU NO. 2 a subdivision of part of the NW 1/4 of Section 18, T2S, R6E, Ann Arbor Township, Washtenaw County, Michigan; being a replat of part of Lot 94 of Huron River Heights No. 3 and part of the NW 1/4 of Section 18, T2S, R6E, Ann Arbor Township, Washtenaw County, Michigan is described as follows: Commencing at the West 1/4 corner of Section 18, T2S, R6E, Ann Arbor Township, Washtenaw County, Michigan; thence along the west line of said section, N 0°-06'-10" W 1954.79 feet; thence N 89°-32' E 209.0 feet; thence N 0°-06'-10" W 424.0 feet; thence N 89°-32' E 468.49 feet for a PLACE OF BEGINNING; thence N 52°-35' E 1.06 feet; thence S 72°-06' E 354.0 feet; thence N 89°-32' E 785.72 feet; thence N 1°-02'-50" E 350.06 feet; thence along the north line of said section, N 89°-32' E 315.52 feet; thence S 0°-30' W 819.98 feet; thence 121.72 feet along the arc of a circular curve concave to the Northeast, radius 462.72 feet, chord N 82°-00' W 121.37 feet; thence N 74°-27'-40" W 39.86 feet; thence N 15°-32'-20" E 66.0 feet; thence N 74°-27'-40" W 107.81 feet; thence 249.30 feet along the arc of a circular curve concave to the Southwest, radius 892.43 feet, chord N 82°-27'-50" W 248.49 feet; thence S 89°-32' W 122.30 feet; thence 251.44 feet along the arc of a circular curve concave to the Southeast, radius 247.86 feet, chord S 60°-28' W 241.0 feet; thence 161.05 feet along the arc of a circular curve concave to the Southwest, radius 245.40 feet, chord N 71°-40' W 158.17 feet; thence S 89°-32' W 168.42 feet; thence S 53°-41' W 407.48 feet; thence S 69°-21'-20" W 65.0 feet; thence N 11°-07'-10" E 491.28 feet; thence N 0°-28'-40" W 270.0 feet to the Place of Beginning, being a part of the NW 1/4 of Section 18, T2S, R6E, Ann Arbor Township, Washtenaw County, Michigan being a replat of part of Lot 94 of Huron River Heights No. 3, and part of the NW 1/4 of Section 18, T2S, R6E, Ann Arbor Township, Washtenaw County, Michigan, containing 12 lots, numbered 14 through 25 inclusive.



SURVEYOR'S CERTIFICATE

I hereby certify that the plat hereon delineated is a correct one and that permanent metal monuments consisting of bars not less than one-half inch in diameter and 36 inches in length, or shorter bars of not less than one-half inch in diameter lapped over each other at least 6 inches with an over-all length of not less than 36 inches, encased in a concrete cylinder at least 4 inches in diameter and 36 inches in depth have been placed at points marked thus (C) as thereon shown at all angles in the boundaries of the land platted, at all the intersections of streets, intersections of alleys, or of streets and alleys, and at the intersection of streets and alleys with the boundaries of the plat as shown on said plat.

Allen R. Suggitt
Registered Engineer No. 12414
114 North First Street, Ann Arbor, Michigan
ZIP CODE 48108

APPROVAL BY BOARD OF COUNTY ROAD COMMISSIONERS

This plat has been examined and was approved on the 9th day of March, 1968, by the Washtenaw County Board of Road Commissioners.

Raymond L. Koch, Chairman
Don A. Weir, Vice-Chairman
H.L. Frisinger, Member

LIBER 19 OF PLATS PAGE 34