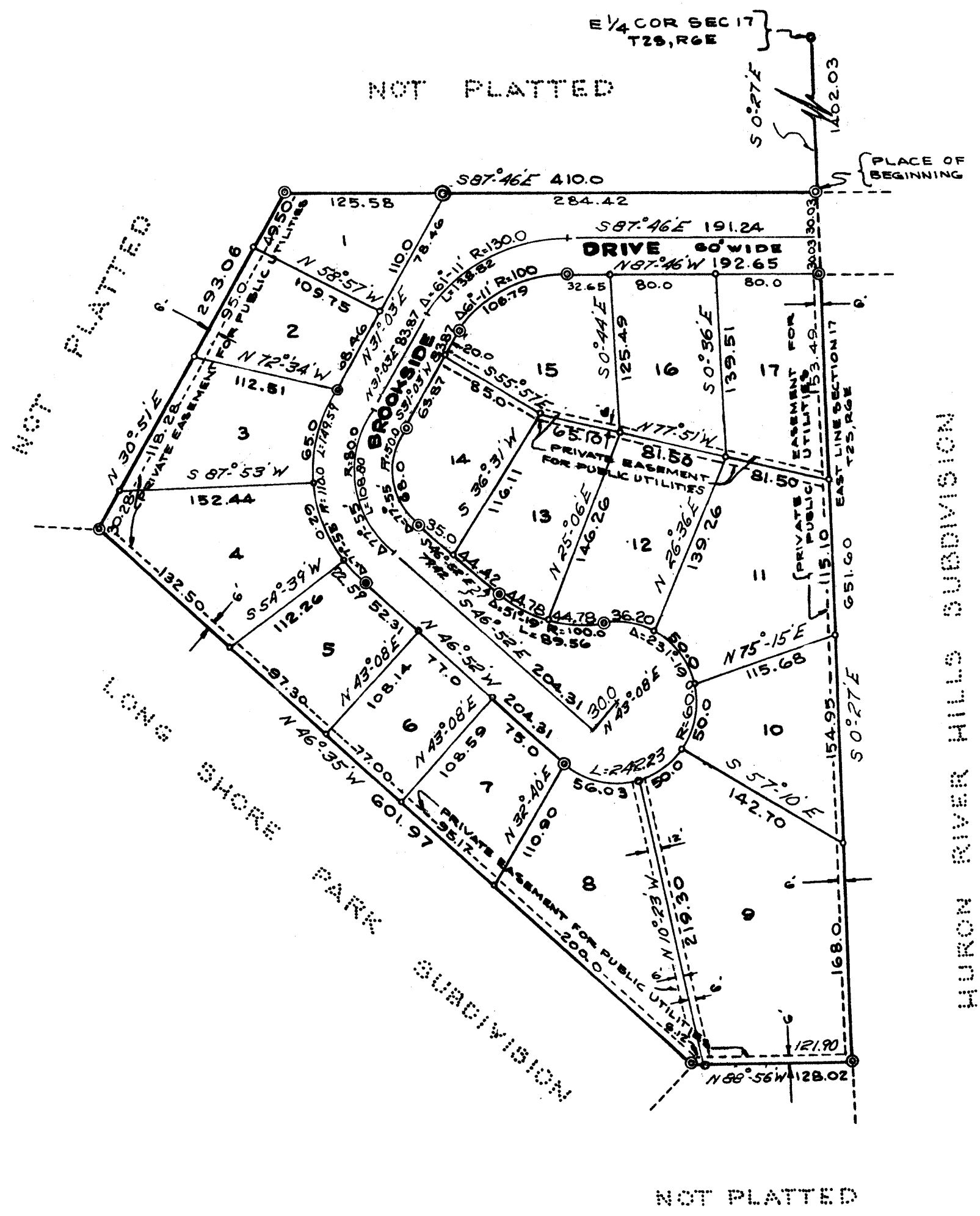


ORIGINAL  
**WINTER'S PARK**  
 A SUBDIVISION OF PART OF THE SE 1/4 OF SECTION 17, T2S, R6E,  
 CITY OF ANN ARBOR, WASHTENAW COUNTY, MICHIGAN

SCALE 1"=100'  
 ALL DIMENSIONS IN FEET AND DECIMALS THEREOF  
 ALL DIMENSIONS ON CURVES ARE ARC LENGTHS  
 SURVEY BY ATWELL-HICKS, INC.



**DEDICATION**

KNOW ALL MEN BY THESE PRESENTS, that we, Neil O. Staebler, doing business under the assumed name of Staebler and Son, and Burnette Staebler, his wife as proprietors, have caused the land embraced in the annexed plat to be surveyed, laid out and platted to be known as WINTER'S PARK, a subdivision of part of the SE 1/4 of Section 17, T2S, R6E, City of Ann Arbor, Washtenaw County, Michigan, and that the Drive as shown on said plat is hereby dedicated to the use of the public.

Signed in the Presence of:  
 Kenneth Heiningger... Witness  
 Robert J. Jagow... Witness  
 Neil O. Staebler  
 Burnette Staebler

**DESCRIPTION OF LAND PLATTED**

The land embraced in the annexed plat of WINTER'S PARK a subdivision of part of the SE 1/4 of Section 17, T2S, R6E, City of Ann Arbor, Washtenaw County, Michigan is described as follows:  
 Commencing at the E 1/4 corner of Section 17, T2S, R6E, City of Ann Arbor, Washtenaw County, Michigan; thence along the east line of said Section 17, S 0° -27' E 1402.03 feet to a PLACE OF BEGINNING; thence continuing along said east line S 0° -27' E 651.60 feet; thence N 88° -56' W 128.02 feet; thence N 46° -35' W 601.97 feet; thence N 30° -51' E 293.06 feet; thence S 87° -46' E 410.0 feet to the Place of Beginning, containing 17 Lots numbered 1 through 17 inclusive.

**CERTIFICATE OF MUNICIPAL APPROVAL**

This plat was approved by the Common Council of the City of Ann Arbor at a meeting held January 16, 1961 and that the width of lots is in compliance with requirements of Section 30, Act 172, of 1929, as amended.

*Fred J. Looker*  
 Fred J. Looker, Clerk

**ACKNOWLEDGMENT**

STATE OF MICHIGAN )  
 County of Washtenaw ) ss.  
 On this 7th day of January, A.D., 1961 before me, a Notary Public in and for said County, personally came the above named Neil O. Staebler and Burnette Staebler known to me to be the persons who executed the above dedication, and acknowledged the same to be their free act and deed.

*Kenneth Heiningger*  
 Kenneth Heiningger  
 Notary Public, Washtenaw County, Michigan  
 My Commission expires Oct. 26, 1964.

I hereby certify this copy is a true copy of map as filed forwarded for deposit of record as recorded.  
February 23, 1961  
 FILED IN AUDITING DEPARTMENT  
February 28, 1961  
 EXAMINED AND APPROVED  
February 23, 1961  
*John N. Flook*  
 John N. Flook  
 Secretary of Plat Engineer  
 Washtenaw County, Michigan

Register's Office  
 Washtenaw County  
 Plat of  
Winter's Park  
 was recorded this 24th day of February, 1961 at 11:38 o'clock A.M.  
15 pages  
42 feet  
*Patricia Newkirk Hardy*

**COUNTY TREASURER'S CERTIFICATE**  
 Office of County Treasurer, Washtenaw County

I hereby certify, that there are no tax liens or titles held by the State on the lands described hereon, and that there are no tax liens or titles held by individuals on said lands for the five years preceding the 16th day of February, 1961, and that the taxes for said period of five years are all paid, as shown by the records of this office.  
 This certificate does not apply to taxes, if any, now in process of collection by township, city or village collecting officers.

*W.F. Verner*  
 W.F. Verner (County Treasurer)

**CERTIFICATE OF APPROVAL BY THE CITY PLANNING COMMISSION**

This plat was approved by the Planning Commission of the City of Ann Arbor, Michigan at a meeting held on the 19th day of January, 1961.

*Richard A. Ware*  
 Richard A. Ware, Chairman  
*William J. Bott*  
 William J. Bott, Secretary

**SURVEYOR'S CERTIFICATE**  
 I hereby certify that the plat hereon delineated is a correct one and that permanent metal monuments consisting of bars not less than one-half inch in diameter and 36 inches in length, or shorter bars of not less than one-half inch in diameter lapped over each other at least 6 inches with an over-all length of not less than 36 inches, encased in a concrete cylinder at least 4 inches in diameter and 36 inches in depth have been placed at points marked thus (⊙) as thereon shown at all angles in the boundaries of the land platted, at all the intersections of streets, intersections of alleys, or of streets and alleys, and at the intersections of streets and alleys with the boundaries of the plat as shown on said plat.

*Robert J. Jagow*  
 Robert J. Jagow  
 Registered Land Surveyor # 6998

**APPROVAL BY COUNTY PLAT BOARD**

This plat was approved on the 16th day of February, 1961, by the Washtenaw County Plat Board.

*Patricia Newkirk Hardy*  
 Patricia Newkirk Hardy  
 County Register of Deeds  
*John N. Flook*  
 John N. Flook  
 County Drain Commissioner  
*J. Martin Rempp*  
 J. Martin Rempp  
 Auditor  
*Herbert G. Loeffler*  
 Herbert G. Loeffler  
 Auditor  
*John P. Cook*  
 John P. Cook  
 Auditor