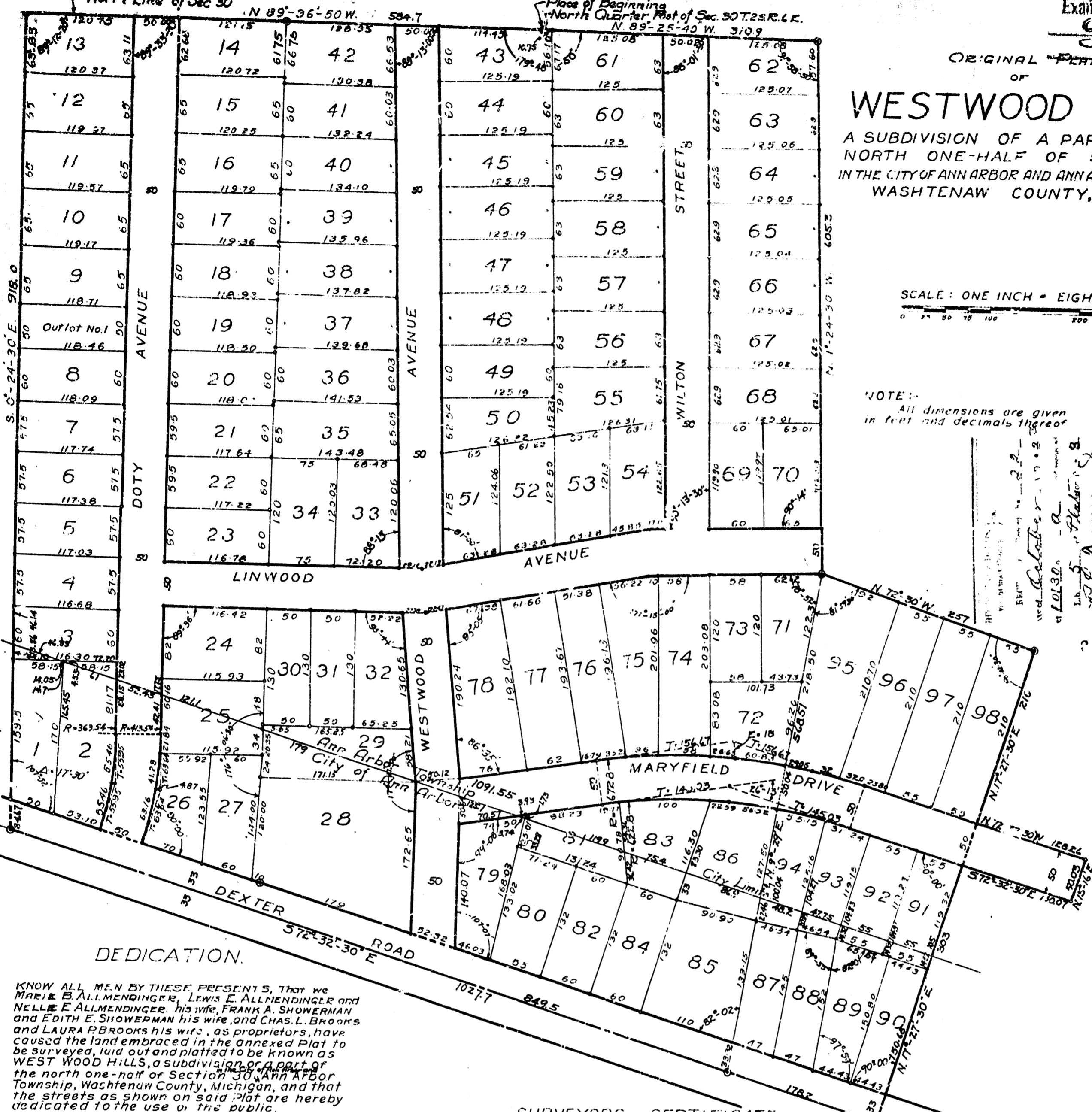
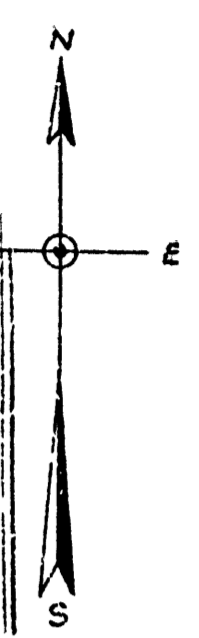


North Line of Sec 30 N 89°-36'-50" W 584.7  
Place of Beginning North Quarter Post of Sec. 30 T.25 S. R. 1 E.

Examined and  
Oct 19 1923  
ORIGINAL PLAT  
OF  
WESTWOOD HILLS  
A SUBDIVISION OF A PART OF THE  
NORTH ONE-HALF OF SECTION 30,  
IN THE CITY OF ANN ARBOR AND ANN ARBOR TOWNSHIP,  
WASHTENAW COUNTY, MICHIGAN

SCALE: ONE INCH = EIGHTY FEET  
0 25 50 75 100 200 300

NOTES:  
All dimensions are given  
in feet and decimals thereof



DEDICATION.

KNOW ALL MEN BY THESE PRESENTS, that we  
MARIE B. ALLMENDINGER, LEWIS E. ALLMENDINGER and  
NELLE E. ALLMENDINGER, his wife, FRANK A. SHOWERMAN  
and EDITH E. SHOWERMAN his wife, and CHAS. L. BROOKS  
and LAURA BROOKS his wife, as proprietors, have  
caused the land embraced in the annexed Plat to  
be surveyed, laid out and platted to be known as  
WESTWOOD HILLS, a subdivision of a part of  
the north one-half of Section 30, Ann Arbor  
Township, Washtenaw County, Michigan, and that  
the streets as shown on said Plat are hereby  
dedicated to the use of the public.  
Signed and Sealed in the Presence of  
Notary Public, Washtenaw Co. Michigan  
My Commission expires 1927

SURVEYORS CERTIFICATE

I hereby certify, that the plat hereon  
delineated is a correct one, and that permanent  
monuments consisting of iron pipes one-half  
inch or more in diameter and eighteen inches or  
more in length have been planted at points  
marked thus \* as thereon shown at all angles  
in the boundaries of the land platted and  
at all intersections of streets.  
Registered Civil Engineer

CERTIFICATE OF APPROVAL  
BY THE COMMON COUNCIL

That part of this plat which is in the  
City of Ann Arbor was approved by the Common  
Council of the City of Ann Arbor, Washtenaw  
County, Michigan, at a meeting held  
September 17th, 1923.  
City Clerk

TAX CERTIFICATE

I hereby certify, that there are no tax  
liens or titles held by the State on the  
lands described above, and that there are  
no tax liens or titles held by individuals  
on said lands for the five years preceding  
the 1st day of October 1923 and that the taxes  
for said period of five years are fully paid  
as shown by the records of the office  
County Treasurer

CERTIFICATE OF APPROVAL  
BY THE BOARD OF PUBLIC WORKS

That part of this plat which is in the  
City of Ann Arbor was approved by the Board of  
Public Works of City of Ann Arbor, Washtenaw  
County, Michigan, at a meeting held  
September 17th, 1923.  
City Clerk

DESCRIPTION

The land embraced in the annexed plat of  
WESTWOOD HILLS, a subdivision of the north one-half of  
Section 30, Ann Arbor Township Washtenaw County,  
Michigan, is described as follows: Commencing  
at north quarter post of Section 30, Town 2 south,  
Range 6 east Michigan Meridian, thence  
N 89°-36'-50" W along the section line 584.70 feet,  
thence S 0°-24'-30" E 918.0 feet to the center line of Dexter  
Road, thence along said center line S 72°-32'-30" E 1027.7 feet;  
thence N 17°-27'-30" E 303 feet, thence S 72°-32'-30" E 1300 feet;  
thence N 15°-16' E 500 feet; thence N 72°-32'-30" W 128.2 feet; thence  
N 17°-27'-30" E 210 feet; thence N 72°-30'-00" W 257 feet; thence  
N 3°-24'-30" W 605.3 feet; thence N 89°-25'-40" W 310.9 feet to the  
Place of Beginning

CERTIFICATE OF APPROVAL  
BY THE BOARD OF COUNTY AUDITORS

Approved by the Board of County Auditors  
of Washtenaw County, Michigan, this 20th day  
of October 1923  
Chairman  
Clerk

CERTIFICATE OF APPROVAL  
BY THE TOWNSHIP BOARD

That part of this plat which is in the  
Township of Ann Arbor was approved by the  
Township Board of Ann Arbor Township,  
Washtenaw County, Michigan, at a meeting  
held October 1st, 1923.  
Clerk

For Official Use See Index 9 min. Records Page 13

112