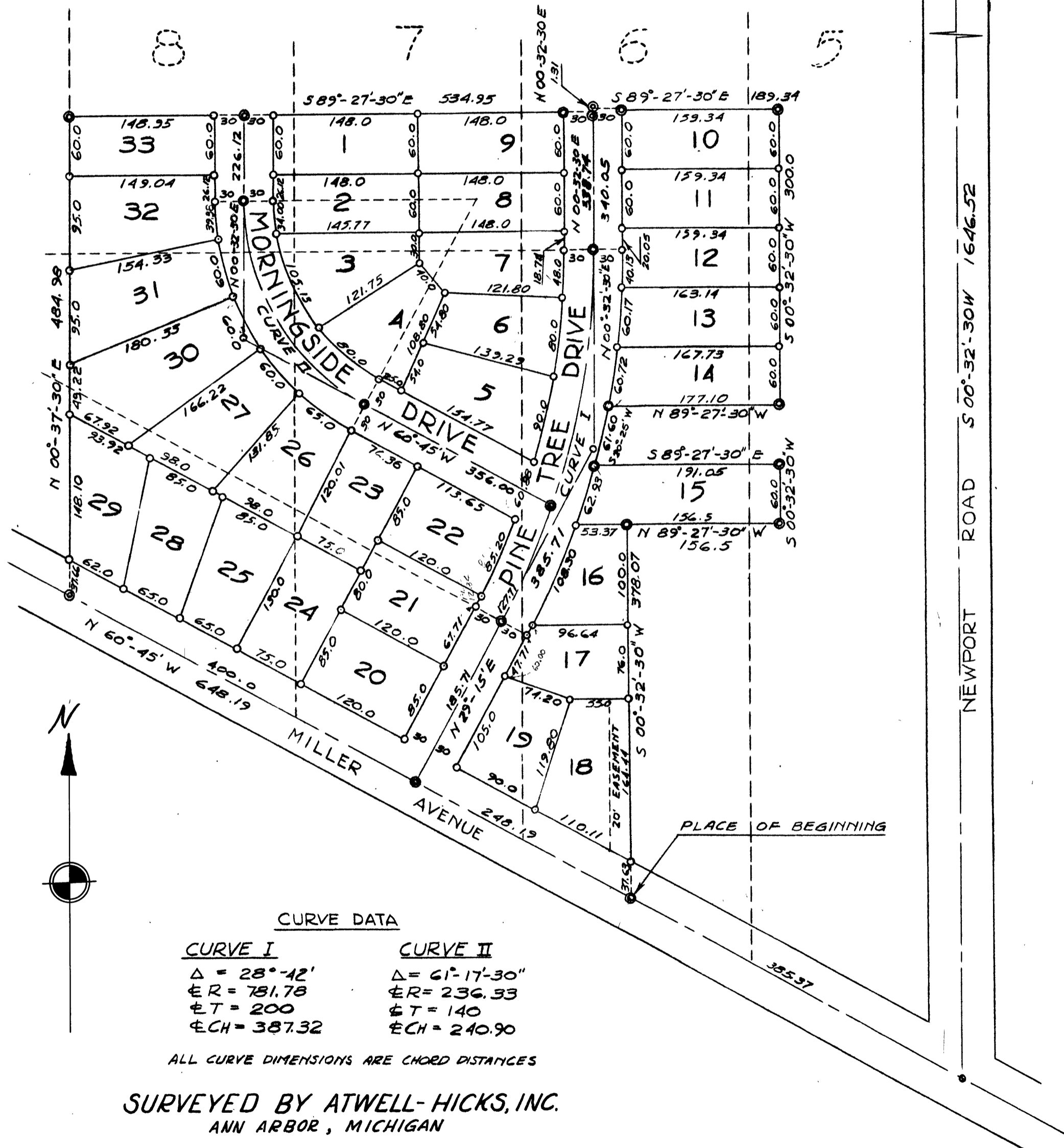


"WESTRIDGE"

A SUBDIVISION OF PART OF
 LOTS 5, 6, 7 & 8 OF THE PLAT OF THE SE 1/4 OF
 SECTION 19, TOWN 2 SOUTH, RANGE 6 EAST
 CITY OF ANN ARBOR
 WASHTENAW COUNTY, MICHIGAN

SCALE: ONE INCH = ONE HUNDRED FEET

NOTE: ALL DIMENSIONS ARE IN FEET AND DECIMALS THEREOF



CURVE DATA

CURVE I	CURVE II
Δ = 28°-42'	Δ = 61°-17'-30"
ER = 781.78	ER = 236.33
ET = 200	ET = 140
CH = 387.32	CH = 240.90

ALL CURVE DIMENSIONS ARE CHORD DISTANCES

SURVEYED BY ATWELL-HICKS, INC.
 ANN ARBOR, MICHIGAN

S.W. COR. OF S.E. 1/4 OF N.E. 1/4
 OF Sec. 19, ANN ARBOR TWP.

NEWPORT ROAD S 00°-32'-30" W 1646.52

DEDICATION

KNOW ALL MEN BY THESE PRESENTS, that we, Edward C. Bliska, husband and Virginia T. Bliska, his wife, as proprietors, have caused the land embraced in the annexed plat to be surveyed, laid out and platted, to be known as "WESTRIDGE", a subdivision of parts of Lots 5, 6, 7 and 8 of the plat of the Southeast 1/4 of Section 19, Town 2 South, Range 6 East, City of Ann Arbor, Washtenaw County, Michigan, and that the streets as shown on said plat are hereby dedicated to the use of the public.

Signed and Sealed in the Presence of:
 Edward C. Bliska (L.S.)
 Edward C. Bliska
 Virginia T. Bliska (L.S.)
 Virginia T. Bliska
 John R. Meadows (Witness)
 John R. Meadows

SURVEYOR'S CERTIFICATE

I hereby certify that the plat hereon delineated is a correct one and that permanent metal monuments consisting of bars not less than one-half inch in diameter and 48 inches in length, or shorter bars of not less than one-half inch in diameter lapped over each other at least 6 inches with an over-all length of not less than 48 inches, encased in a concrete cylinder at least 4 inches in diameter and 48 inches in depth have been placed at points marked thus (.....) as thereon shown, at all angles in the boundaries of the land platted, at all the intersections of streets, intersections of alleys, or of streets and alleys, and at the intersections of streets and alleys with the boundaries of the plat as shown on said plat.
 Herbert S. Hicks
 Registered Land Surveyor or Registered Professional Engineer
 No. 1715

CERTIFICATE OF APPROVAL BY THE CITY PLANNING COMMISSION

This plat was approved by the Planning Commission of the City of ANN ARBOR, MICH. at a meeting held on the 23 day of NOVEMBER, 1951.

Frederick N. McOmber (Chairman)

WILLIAM C. WALZ, SEC'Y MUNICIPAL APPROVAL

This plat was approved by the Board of Public Works of the City of Ann Arbor at a meeting held on the 23 day of November, 1951.
 Fred J. Looker (Clerk)

ACKNOWLEDGMENT

STATE OF MICHIGAN
 County of Washtenaw ss.
 On this 23rd day of November, 1951, before me, a Notary Public in and for said County, personally came the above named Edward C. Bliska, husband and Virginia T. Bliska, wife known to me to be the persons who executed the above dedication, and acknowledged the same to be their free act and deed.
 Notary Public, Washtenaw County
 My Commission expires Dec. 16, 1952

DESCRIPTION OF LAND PLATTED

The land embraced in the annexed plat of "WESTRIDGE", a subdivision of parts of Lots 5, 6, 7 and 8 of the plat of the Southeast 1/4 of Section 19, Town 2 South, Range 6 East, City of Ann Arbor, Washtenaw County, Michigan, is described as follows:

Commencing at the Southwest corner of the Southeast 1/4 of the Northeast 1/4 of Section 19, Ann Arbor, Township, thence South 0°32'30" West along the center line of Newport Road 1646.52 feet to the intersection of the center lines of Miller Avenue and Newport Road; thence North 60°45'00" West 385.37 feet in the center line of Miller Avenue for a place of beginning; thence continuing North 60°45'00" West in the center line of Miller Avenue 648.19 feet; thence North 0°37'30" East 484.98 feet; thence South 89°27'30" East 534.95 feet; thence North 0°32'30" East 1.31 feet; thence South 89°27'30" East 189.34 feet; thence South 0°32'30" West 300.00 feet; thence North 89°27'30" West 177.10 feet; thence Southerly in the arc of a circular curve to the right having a radius of 811.78 feet whose chord bears South 20°25'00" West 61.60 feet; thence South 89°27'30" East 191.05 feet; thence South 0°32'30" West 60.00 feet; thence North 89°27'30" West 156.5 feet; thence South 0°32'30" West 378.07 feet to the place of beginning.

APPROVAL BY BOARD OF COUNTY AUDITORS

Approved by the Board of County Auditors of Washtenaw County, Michigan, this 23rd day of November, 1951.
 J. Martin Rempp (Chairman)
 Adolph F. Gross
 Herbert G. Loeffler

COUNTY TREASURER'S CERTIFICATE

Office of County Treasurer, Washtenaw County. I hereby certify, that there are no tax liens or titles held by the State on the lands described hereon, and that there are no tax liens or titles held by individuals on said lands, for the five years preceding the 23rd day of November, 1951, and that the taxes for said period of five years are all paid, as shown by the records of this office. This certificate does not apply to taxes, if any, now in process of collection by township, city or village collecting officers.
 W. F. Verner (County Treasurer)

MADE PUBLIC BY THIS PLAT IS A TRUE COPY OF THE RECORDS FOR RECORDS.
 November 28, 1951
 Deputy Auditor General

COPY
 Register's Office
 Washtenaw County, ss.
 Plat of Westridge
 City of Ann Arbor
 was Recorded this 30th day of November, 1951 at 2:00 o'clock P.M. in Liber 11 of Plats
 Page 28

Examined and Approved
 November 28, 1951
 Deputy Auditor General

FILED IN AUDITOR GENERAL'S OFFICE

December 5, 1951
 Deputy Auditor General