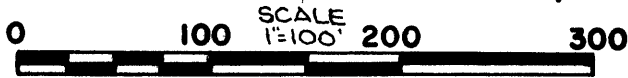


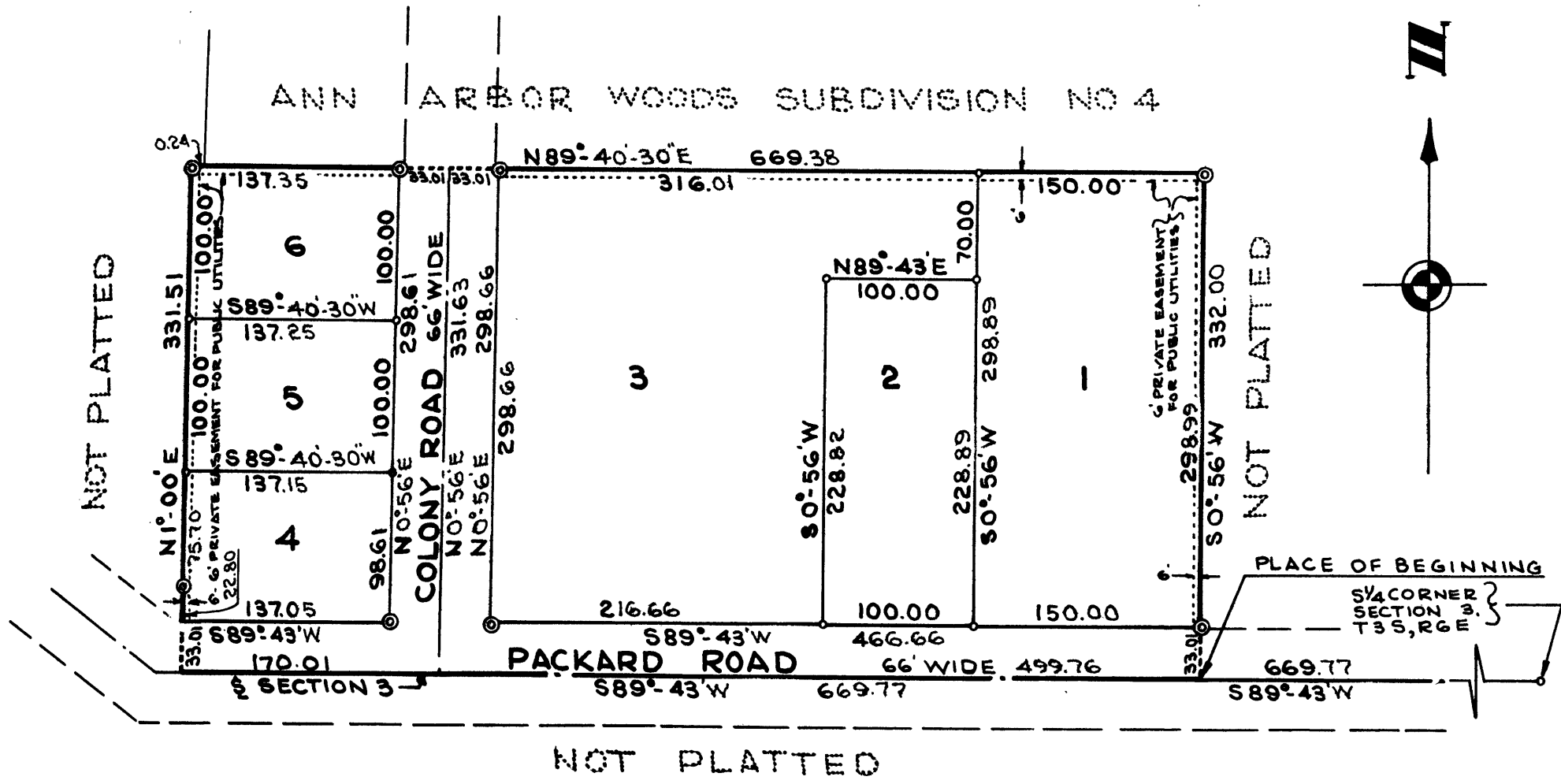
COPY
WALTAN SUBDIVISION

OF PART OF THE SW 1/4 OF SECTION 3, T3S, R6E,
CITY OF ANN ARBOR, WASHTENAW COUNTY, MICHIGAN



ALL DIMENSIONS ARE IN FEET AND DECIMALS THEREOF
SURVEY BY ATWELL-HICKS, INC.

Waltan
Subdivision
13th
Dec 64 1:29
P 17 plates
" Patricia Newkirk Hardy
By C.R.C. Reg.



Jan. 30, 1964
Feb 20, 1964
Jan. 30, 1964

Richard E. Bidstrup

DESCRIPTION OF LAND PLATTED

The land embraced in the annexed plat of WALTAN SUBDIVISION of part of the SW 1/4 of Section 3, T3S, R6E, City of Ann Arbor, Washtenaw County, Michigan is described as follows:
Commencing at the South 1/4 corner of Section 3, T3S, R6E, City of Ann Arbor, Washtenaw County, Michigan; thence S 89°-43'-00" W 669.77 feet along the south line of said section for a PLACE OF BEGINNING; thence S 89°-43'-00" W 669.77 feet; thence N 1°-00'-00" E 331.51 feet; thence N 89°-40'-30" E 669.38 feet; thence S 0°-56'-00" W 332.00 feet to the Place of Beginning, being a part of the SW 1/4 of said Section 3, and containing 6 lots numbered 1 through 6 inclusive.

DEDICATION

KNOW ALL MEN BY THESE PRESENTS, that we, Walter T. Anicka and Jeannette S. Anicka his wife, and Ann Arbor Telephone Employees Credit Union, a Michigan Corporation by J. Raymond Cook, President, and David C. Leszczynski, Assistant Treasurer, and the Washtenaw County Chapter of the American National Red Cross, by James F. Beamer, Acting Chapter Chairman, Roy E. Weber, Treasurer, and W. De. St. Aubin, Executive Director, as proprietors have caused the land embraced in the annexed plat to be surveyed, laid out and platted to be known as WALTAN SUBDIVISION of part of the SW 1/4 of Section 3, T3S, R6E, City of Ann Arbor, Washtenaw County, Michigan, and that the Roads as shown on said plat are hereby dedicated to the use of the public, and the easements indicated on said plat are not dedicated to the public but reserved for public utilities and any other use designated hereon and no permanent structures are to be located within said easements.

Signed in the Presence of:

Barbara J. Gordon Witness
Charlene K. Schlegel Witness

Walter T. Anicka
Jeannette S. Anicka

Signed in the Presence of:

Richard E. Bidstrup Witness
Barbara J. Gordon Witness

ANN ARBOR TELEPHONE EMPLOYEES CREDIT UNION, BY:
J. Raymond Cook, President
David C. Leszczynski, Assistant Treasurer

Signed in the Presence of:

Richard E. Bidstrup Witness
Richard E. Bidstrup Witness

WASHTENAW COUNTY CHAPTER OF THE AMERICAN NATIONAL RED CROSS, BY:
James F. Beamer, Acting Chapter Chairman
Roy E. Weber, Treasurer
W. De. St. Aubin, Executive Director

ACKNOWLEDGMENT

STATE OF MICHIGAN)
County of Washtenaw) ss.

On this 12th day of July, A.D., 1963, before me, a Notary Public in and for said county, personally came the above named Walter T. Anicka and Jeannette S. Anicka his wife, known to me to be the persons who executed the above dedication and acknowledged the same to be their free act and deed.

Barbara J. Gordon
Notary Public, Washtenaw County, Michigan

My Commission expires August 4, 1964

ACKNOWLEDGMENT

STATE OF MICHIGAN)
County of Washtenaw) ss.

On this 9th day of August, A.D., 1964, before me, a Notary Public in and for said County, appeared J. Raymond Cook and David C. Leszczynski to me personally known, who being each by me duly sworn did say that they are the President and Assistant Treasurer respectively of the Ann Arbor Telephone Employees Credit Union, a Michigan Corporation, and that said instrument was signed in behalf of said Corporation by authority of its Board of Directors and the said J. Raymond Cook and David C. Leszczynski acknowledged said instrument to be the free act and deed of said Corporation.

Barbara J. Gordon
Notary Public, Washtenaw County, Michigan

My Commission expires August 4, 1964

ACKNOWLEDGMENT

STATE OF MICHIGAN)
County of Washtenaw) ss.

On this 9th day of August, A.D., 1964, before me, a Notary Public in and for said County appeared James F. Beamer, Roy E. Weber, and W. De. St. Aubin to me personally known, who being each by me duly sworn did say that they are the Acting Chapter Chairman, Treasurer, and Executive Director respectively of the Washtenaw County Chapter of the American National Red Cross and that said instrument was signed in behalf of said Washtenaw County Chapter of the American National Red Cross by authority of its Board of Directors and the said James F. Beamer and Roy E. Weber, and W. De. St. Aubin acknowledged said instrument to be the free act and deed of said Washtenaw County Chapter of the American National Red Cross.

Barbara J. Gordon
Notary Public, Washtenaw County, Michigan

My Commission expires August 4, 1964

COUNTY TREASURER'S CERTIFICATE
Office of County Treasurer, Washtenaw County

I hereby certify, that there are no tax liens or titles held by the State on the lands described hereon, and that there are no tax liens or titles held by individuals on said lands for the five years preceding the 20th day of April, 1963, and that the taxes for said period of five years are all paid, as shown by the records of this office

This certificate does not apply to taxes, if any, now in process of collection by township, city or village collecting officer.

Sylvester A. Leonard
County Treasurer

CERTIFICATE OF APPROVAL BY THE CITY PLANNING COMMISSION

This plat was approved by the Planning Commission of the City of Ann Arbor, Michigan at a meeting held on the 22nd day of October, 1963

Richard A. Ware, Chairman
Robert V. Galbreath, Secretary

CERTIFICATE OF MUNICIPAL APPROVAL

This plat was approved by the Common Council of the City of Ann Arbor at a meeting held November 4, 1963, and is in compliance with Section 19a and that the width of lots conforms with requirements of Section 30, Act 172, of 1929, as amended.

Fred J. Looker, Clerk

APPROVAL BY COUNTY PLAT BOARD

This plat was approved on the 12th day of December, 1963, by the Washtenaw County Plat Board.

Patricia Newkirk Hardy, John H. Flook
County Register of Deeds County Drain Commissioner
J. Martin Rempp, Herbert G. Loeffler
Auditor Auditor
John P. Cook
Auditor

SURVEYOR'S CERTIFICATE

I hereby certify that the plat hereon delineated is a correct one and that permanent metal monuments consisting of bars not less than one-half inch in diameter and 36 inches in length, or shorter bars of not less than one-half inch in diameter lapped over each other at least 6 inches with an over-all length of not less than 36 inches in depth have been placed at points marked thus (⊙) as thereon shown at all angles in the boundaries of the land platted, at all the intersections of streets, intersections of alleys, or of streets and alleys, and at the intersections of streets and alleys with the boundaries of the plat as shown on said plat.

Richard E. Bidstrup
Registered Land Surveyor No. 11360