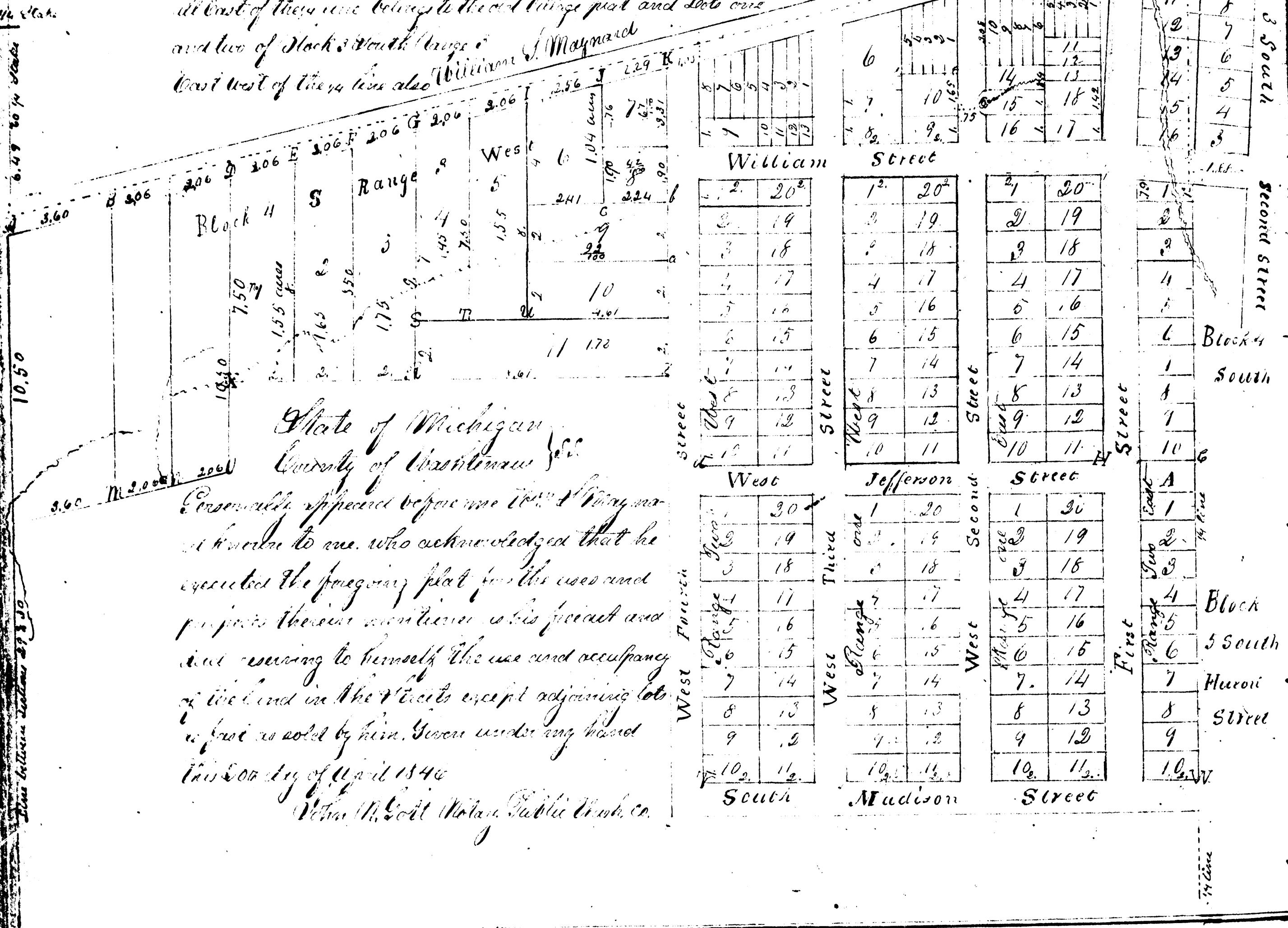


For affidavit see Liber 9 my. Records page 282 see index 641 page 472 see Liber 869 page 231

William H. Maynard's Addition to the Village of Ann Arbor

This plat is on the South West 1/4 of Section No. 27 of Township No. 2 North of Range No. 6 East. The blocks are all four rods wide excepting in front of lot 15 of Block 3 South of Range one East when it is three rods wide opposite the middle of the lot and on a curve to the corner of the lot. The length and width of lot are given in chains and links on the lines; the number of the lots are placed near the middle; the corners are found by notes referred by letters. All east of the line belong to the old village plat and lots one and two of Block 3 South of Range one East west of the line also William H. Maynard



State of Michigan
County of Washtenaw

Personally appeared before me *Wm. H. Maynard* a known to me, who acknowledged that he executed the foregoing plat for the uses and purposes therein mentioned, as his free act and deed reserving to himself the use and occupancy of the land in the streets except adjoining lots as far as sold by him. Given under my hand this 20th day of April 1846

Wm. H. Maynard Notary Public Wash. Co.

- 1. S. 0 55 67 W. 314 near pillar of Pitch Halls dwelling House N. 50 1/4 W. 2. 19. B. W. 0 34 W. 10 1/2 26
- 2. 12 W. 0 20 S. 44 W. 106 - E. W. 0 14 N. 67 W. 62 D. W. 0 20 S. 73 1/2 E. 1. 52 - E. W. 0 20 S. 7 W. 1. 06 S. W. 0 19 S. 50 1/2
- 3. 152 - S. W. 0 19 S. 2 1/2 W. 1. 02 W. 0 17 S. 70 1/2 W. 81 - 80 B. 0 32 N. 05 1/4 E. 3. 06 W. 0 1 24 S. 43 W. 26 1/2 S. B. 0 34
- 4. N. 1. 15 S. corner of House N. 12 1/2 E. 1. 22 S. Maple 3 N. 20 1/2 W. 71 Plum 4 N. 11 E. 76 - N. B. 0 28 S. 31 W. 186 Plum
- 5. S. 1. 15 W. 76 - S. W. 0 20 S. 3 3/4 W. 186 corner House N. 77 1/2 E. 1. 50 - M. B. W. 18 W. 24 E. 11 B. 18 W. 11 S. 66 E.
- 6. N. 0 1/2 W. 10 N. 83 E. 60 - O. Elm 10 S. 73 1/2 W. 157 W. 0 5 N. 22 1/4 E. 1. 25 - P. Burr 0 24 S. 65 E. 134 Apple 5 1/2
- 7. 2 1/2 W. 77 - S. Burr 0 24 S. 145 1/2 S. 84 Burr 0 20 S. 5 1/2 E. 71 - R. Popple 5 N. 79 1/2 W. 81 Hickory 4 N. 29 1/2 W. 65 - S. B. 0
- 8. 2 1/2 S. 1/4 double base 30 S. 4 E. 59 - S. B. 0 30 N. 72 W. 34 - M. B. 0 4 N. 21 E. 80 S. Plum 2 S. 75 W. 33 1/2. Rail 1 1/4 E. 69 - W.
- 9. S. 0 5 N. 30 E. 19 W. 0 1 30 S. 34 E. 1. 12 - X. Elm 14 N. 62 E. 54 - Y. B. 0 28 N. 75 W. 2. 60 B. 0 28 N. 36 1/2 E. 213 - Z. B. 0 36 S. 82 1/2 W. 182
- 10. a. W. 0 11 West 03 - b. Elm 30 S. 52 W. 2. 25. B. 0 30 S. 2 1/2 E. 80 - c. Elm 30 S. 77 1/2 E. 1. 45 - d. B. 0 28 N. 45 1/4 W. 4. 26. B. 0 24 W.
- 11. 65 E. 1. 14 - e. Burr 0 24 S. 53 E. 71 - f. S. W. corner of upright part of dwelling House N. 81 1/4 E. 55 M. E. corner same N. 55 E. 66

Register Office Washtenaw County for Record and recorded this 16th day of March A.D. 1848 at 10 o'clock A.M. in Liber 5 Page 548

Thos. M. Lucas Register
M. C. Kelly Deputy