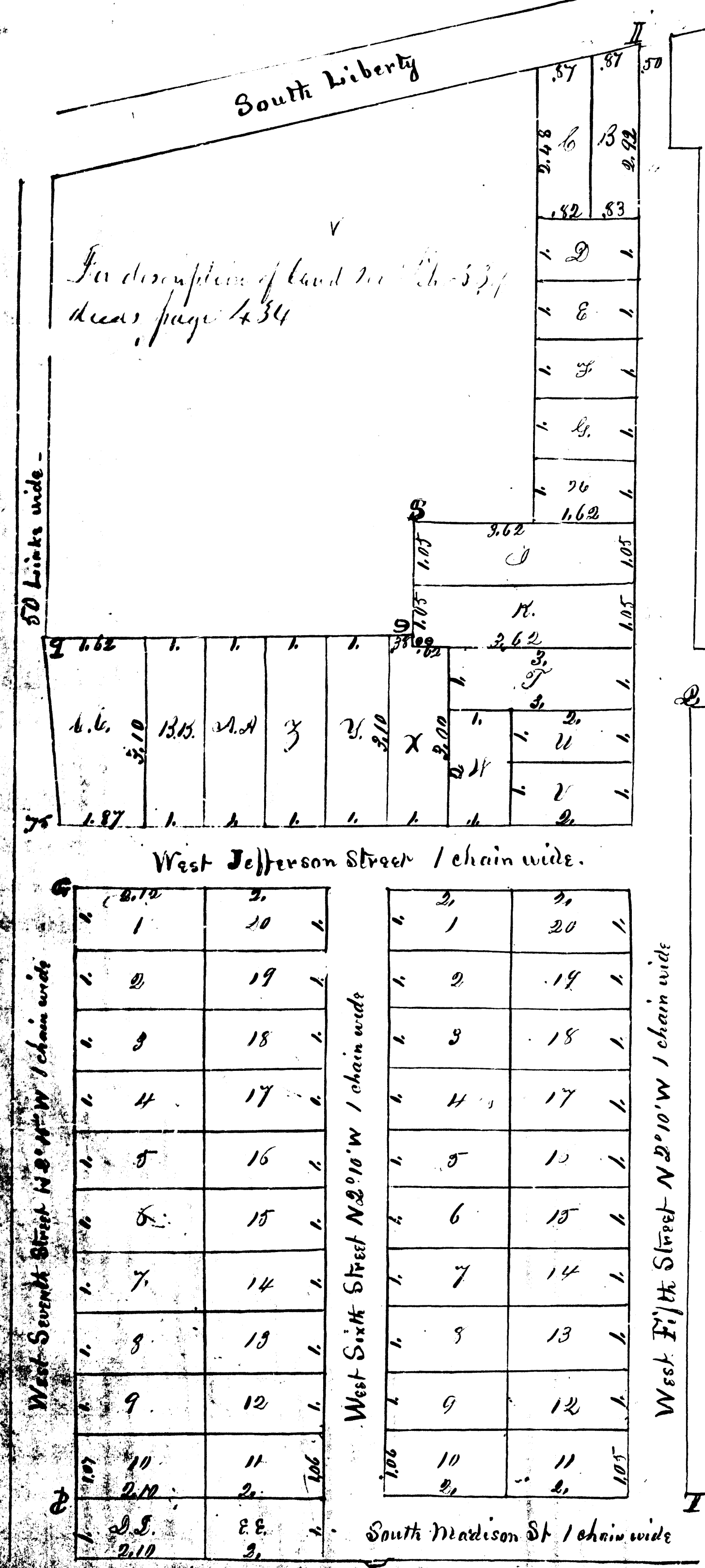


B. Wilson, a Notary Public within and for said County personally appeared William O. Maynard, the proprietor of the lands included in this plat and Washington Weeks the Civil Engineer and Surveyor, who laid out and surveyed said lands and made said plat and severally acknowledged before me that they laid out and platted said lands and made and executed this map or plat for the uses therein expressed.

Uriah B. Wilson
Notary Public Washburn Co - Wis

William O. Maynard third addition Ann Arbor



- Post. Bearings as
- I Locust 8 di - N 81° 45' E = 0.41
 - 110.4 N 85° W = 0.73
 - J Hickory 7 di N 87° 15' W = 0.984
 - 478-16 S 79° 15' E = 0.214
 - K Hickory 6 S 110° W = 0.22
 - L Lynn 30 S 11° E = 0.59
 - oo Hickory 8 N 26° 57' W = 0.76
 - 9 Hickory 8 S 93° W = 1.54
 - P Hickory 9 N 17° E = 1.20
 - T B.P. 9 S 2 1/2° W = 0.38% link
 - D Oak Stump 28 N 74 1/2° E = 2.55
 - B Hickory 8 N 21° W = 0.63

Note = The length & width of the lots are marked on the lines -
The numbering and contents of the Lots are in Red ink near the centre of each lot

Variation 0° 47' E
Scale 2 chains to an inch

Augt 23/59
W. Weeks
Surveyor