

W.O. EDWARDS SUBDIVISION
 PART OF LOTS 13, 14, 15 AND 16 IN
 THOMPSON, SPOOR AND THOMPSON'S ADDITION
 TO THE CITY OF ANN ARBOR AND A PART OF THE S.W. 1/4
 OF THE S.W. 1/4 SEC. 29, T25., R6E. ANN ARBOR
 TOWNSHIP, WASHTENAW COUNTY, MICHIGAN

DEDICATION

KNOW ALL MEN BY THESE PRESENTS, That we Wendell O. Edwards and Mary Louise Edwards his wife as proprietors have caused the land embraced in the annexed plat to be surveyed, laid out and platted to be known as "W. O. EDWARDS SUBDIVISION", part of lots 13, 14, 15, and 16 in Thompson, Spoor and Thompson's Addition to the City of Ann Arbor and a part of the S. W. 1/4 of the S. W. 1/4 of Section 29, town 2 south, range 6 east, Ann Arbor Township, Washtenaw County, Michigan and that the streets as shown on said plat are hereby dedicated to the use of the public.

Signed and Sealed in the Presence of
 Wendell O. Edwards (L.S.)
 Mary Louise Edwards (L.S.)
 Nona F. Cox
 Louise White

ACKNOWLEDGMENT

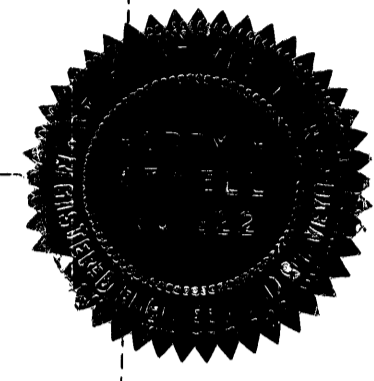
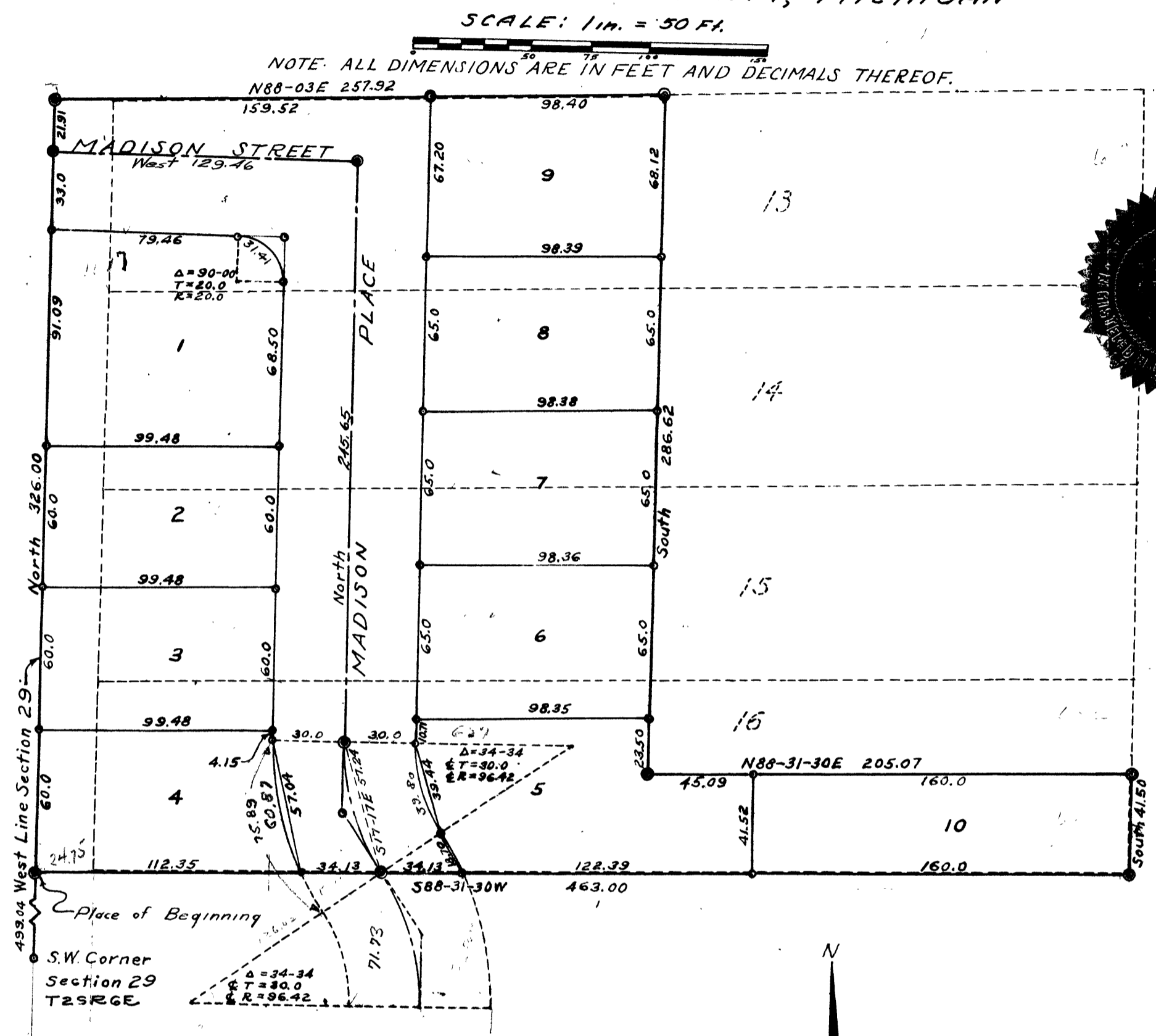
STATE OF MICHIGAN
 County of Washtenaw
 On this 7th day of April, 1948, before me, a Notary Public in and for said county, personally came the above named Wendell O. Edwards and Mary Louise Edwards his wife, known to me to be the persons who executed the above dedication, and acknowledged the same to be their free act and deed.

Notary Public, Washtenaw County, Michigan
 My commission expires May 7, 1951

DESCRIPTION

The land embraced in the annexed plat of W. O. EDWARDS SUBDIVISION, part of lots 13, 14, 15 and 16 in Thompson, Spoor and Thompson's Addition to the City of Ann Arbor and a part of the S. W. 1/4 of the S. W. 1/4 Section 29, town 2 south, range 6 east, Ann Arbor Township, Washtenaw County, Michigan is described as follows:

Commencing at a monument in the west line of Section 29, town 2 south, range 6 east, Washtenaw County, Michigan 499.04 feet north of the south west corner of said section and at the intersection of the south line, extended westerly, of Lot 16 in Thompson, Spoor and Thompson's Addition to the City of Ann Arbor with the west line of Section 29; thence north 326.0 feet in the west line of Section 29 to the north line of Lot 13 in said Addition; thence north 85'-03" east 257.92 feet in the north line of Lot 13; thence south 286.62 feet; thence north 88'-31'-30" east 205.07 feet to the west line of 7th Street; thence south 41.50 feet in the west line of 7th Street to the south line of Lot 16 in Thompson, Spoor and Thompson's Addition; thence south 88'-31'-30" west 463.0 feet in the south line of Lot 16 to the place of commencement.



SURVEYOR'S CERTIFICATE

I hereby certify that the plat hereon delineated is a correct one and that permanent metal monuments consisting of bars not less than one-half inch in diameter and 48 inches in length, or shorter bars of not less than one-half inch in diameter lapped over each other at least 6 inches with an over-all length of not less than 48 inches, encased in a concrete cylinder at least 4 inches in diameter and 48 inches in depth have been placed at points marked thus O as thereon shown at all angles in the boundaries of the land platted, at all intersections of streets, intersections of alleys, or of streets and alleys, and at the intersections of streets and alleys with the boundaries of the plat as shown on said plat.

Harry H. Atwell
 Registered Civil Engineer and Surveyor

COUNTY TREASURER'S CERTIFICATE RELATING TO TAXES
 (Sec. 135, Act 206, 1893, As amended—Sec. 4134, C. L. 1915)

Office of County Treasurer, Washtenaw County
 I hereby certify, That there are no tax liens or titles held by the State in the lands described hereon, and that there are no tax liens or titles held by individuals on said lands, for the five years preceding the 20th day of April, 1948, and that the taxes for said period of five years are paid, as shown by the records of this office. This certificate does not apply to taxes, if any, now in process of collection by township, city or village collecting officers.

Clyde D. Fleming
 County Treasurer

CERTIFICATE OF APPROVAL BY THE PLANNING COMMISSION

This plat was approved by the Planning Commission of the City of Ann Arbor at a meeting held MARCH 23, 1948.

Sybil K. Bennett, Chairman
 R. C. Eastman, EXEC. Secretary

CERTIFICATE OF APPROVAL BY THE BOARD OF COUNTY AUDITORS

Approved by the Board of Washtenaw County Auditors this 31st day of April, 1948.

J. Martin Rempp, Chairman
 L. O. Cushing, Member
 John E. Walz, Member

CERTIFICATE OF MUNICIPAL APPROVAL

This plat was approved by the Common Council of the City of Ann Arbor at a meeting held April 2, 1948.

Fred C. Perry, Clerk

CERTIFICATE OF APPROVAL BY THE BOARD OF PUBLIC WORKS

This plat was approved by the Board of Public Works of the City of Ann Arbor at a meeting held April 7, 1948.

Fred C. Perry, Clerk

Examined and Approved
 May 11, 1948
 Mayme Jewell Purdy, Deputy Auditor General

FILED IN AUDITOR GENERAL'S DEPT.

May 17, 1948
 Mayme Jewell Purdy, DEPUTY AUDITOR GENERAL

COPY
 Register's Office
 Washtenaw County, ss.
 Plat of W. O. Edwards et al.
 was Recorded this 14 day of May, A.D., 1948 at 8 O'clock
 of M. Liber 10 of Plat
 on Page 57
 Allan A. Johnson, Register of Deeds

I HEREBY CERTIFY THAT THIS COPY IS A TRUE COPY OF THE MAP OR PLAT FORWARDED THE REGISTER OF DEEDS FOR RECORDING.

COMPARED
 May 11, 1948
 Mayme Jewell Purdy, DEPUTY AUDITOR GENERAL