

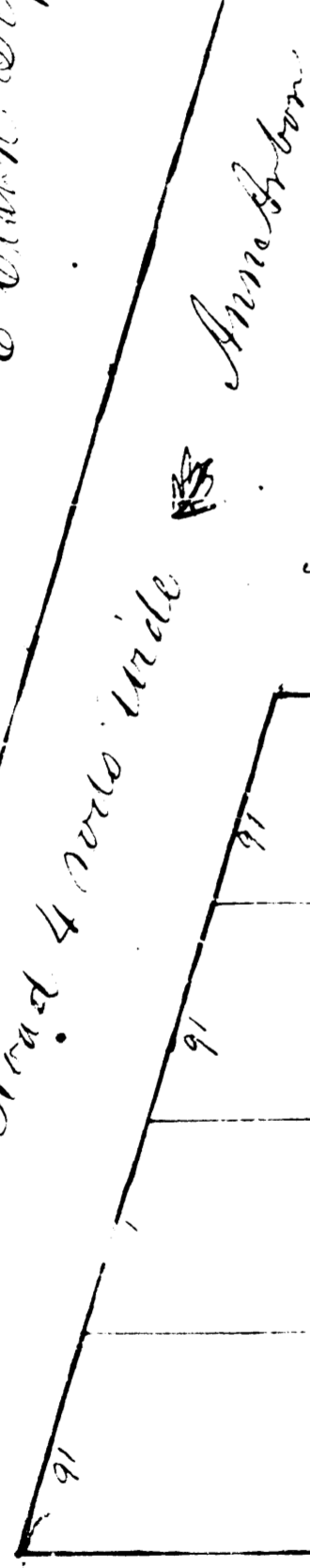
718

William A Benedicts Plat

Registers Office

Ann Arbor, Mich. Recd. this 11th day of March A.D. 1859 at 4 1/2

Ann Arbor, Mich. in the 4th of Dec. as by page 748
 of Clerk's Plat in the 1st of Dec. as by page 748
 of Clerk's Plat in the 1st of Dec. as by page 748
 of Clerk's Plat in the 1st of Dec. as by page 748



Ann Arbor City Boundary. Section line North Side of Sec. 36

1	2.16	88	1	2.00
2	2.84	88	5	88
3	2.56	88	6	88
4	2.35	88	7	88
5	2.00	88	8	88
6	2.16	88	9	88

Division into 7 1/2 links wide

1	2.00	88	11	88	175
2	2.00	88	12	88	175
3	2.00	88	13	88	175
4	2.00	88	14	88	175
5	2.00	88	15	88	175
6	2.00	88	16	88	175
7	2.00	88	17	88	175
8	2.00	88	18	88	175
9	2.00	88	19	88	175

Street
 4 rods wide

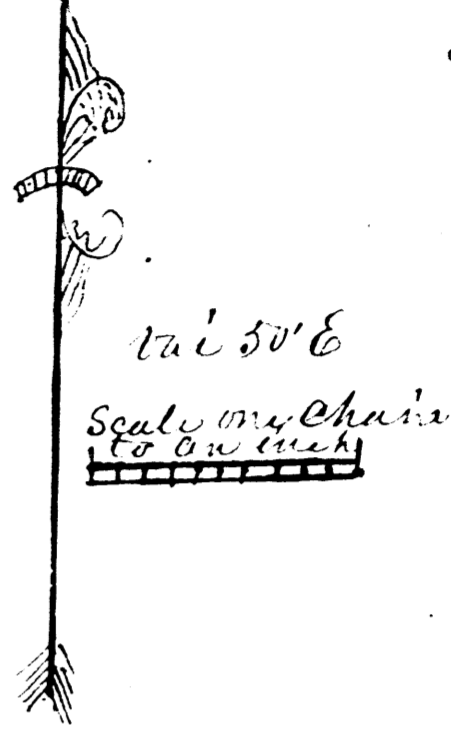
This Plat is located on the East 3/4 of Section thirty two Township two South of Range Six East

Notes, and a planations of the Plat from center of Plank Road to 1/4 Mark Area by chains and eighty 3.80, links The distances are noted in chains and links The numbering of the lots is in red ink

Surveyed by W. M. H. W. }
 Nov 29th 1858

Registers Office West Lane Court,
 Ann Arbor Mich. recorded this 20 day of June A.D.
 1859 at 5 30 O'clock P.M. in Liber 44 of d.c.s.
 on page 748

For 26 of Mich. Reg. 1858
 E. Clark, Deput.



That plat of lot 9, in this initial day of April A.D. 1859
 was sold to the City of Ann Arbor, Mich. by the
 City of Ann Arbor, Mich. in the 4th of Dec. as by page 748
 of Clerk's Plat in the 1st of Dec. as by page 748
 of Clerk's Plat in the 1st of Dec. as by page 748
 of Clerk's Plat in the 1st of Dec. as by page 748

Wm A Benedict Regr
 E. W. Benedict Plat
 Wm H. Burnham 09321