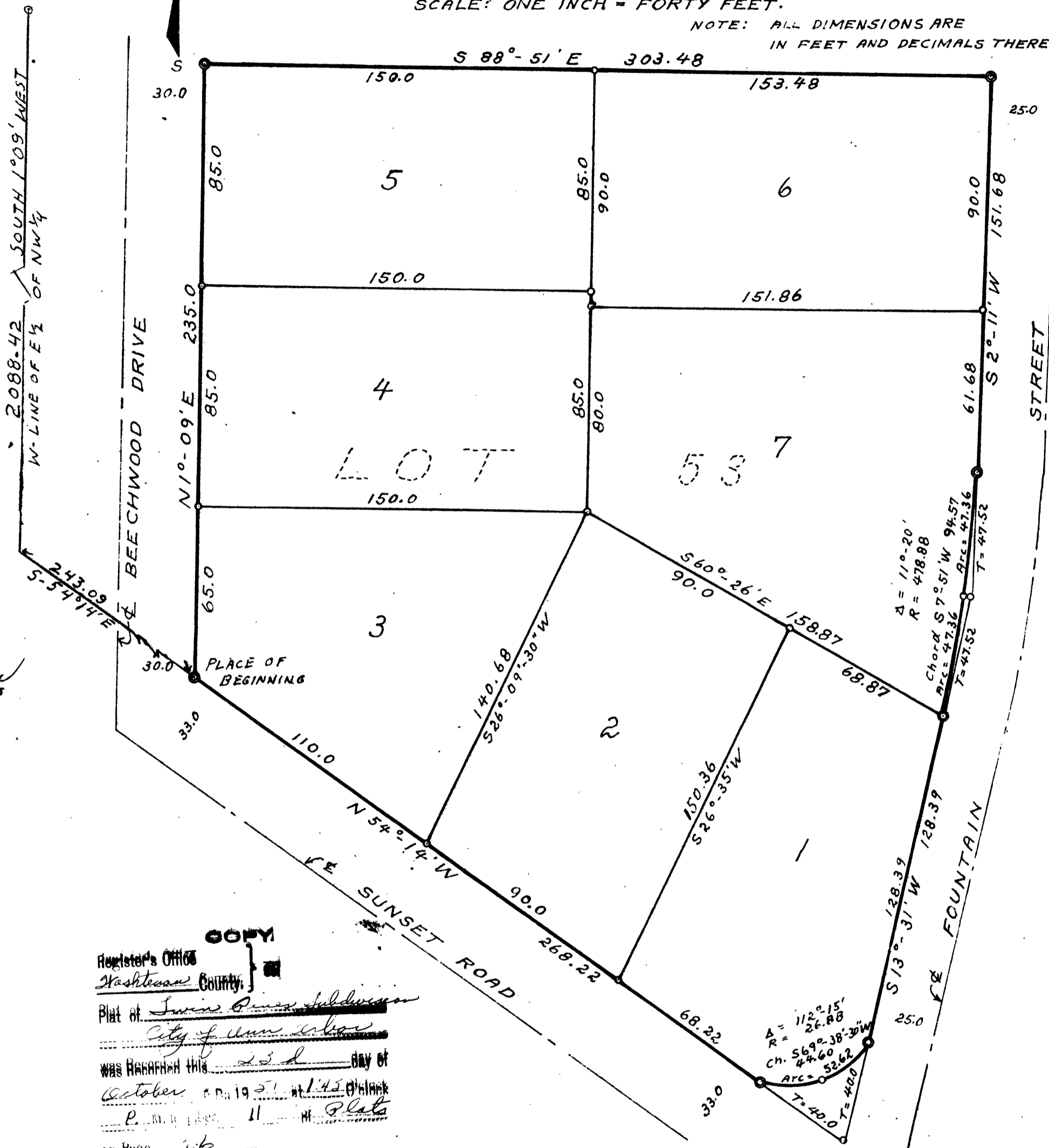


"TWIN PINES SUBDIVISION"

OF LOT 53 OF GANZHORN HILLS, A SUBDIVISION
OF PART OF THE NORTHWEST QUARTER, SECTION 20,
TOWN TWO SOUTH, RANGE SIX EAST,
IN THE CITY OF ANN ARBOR,
WASHTENAW COUNTY, MICHIGAN.

WEST EIGHTH POST
ON NORTH LINE SECTION 20

SCALE: ONE INCH = FORTY FEET.
NOTE: ALL DIMENSIONS ARE
IN FEET AND DECIMALS THEREOF.



DEDICATION

KNOW ALL MEN BY THESE PRESENTS, that I, Gertrude A. Ganzhorn, as proprietor, have caused the land embraced in the annexed plat to be surveyed, laid out, and platted, to be known as, "TWIN PINES SUBDIVISION" of lot 53 of "GANZHORN HILLS" a subdivision of part of the Northwest Quarter, Section 20, Town Two South, Range Six East, in the City of Ann Arbor, Washtenaw County, Michigan, and that the streets as shown on said plat have been dedicated to the use of the public.

Signed and Sealed in the presence of:

Elsie Wilke
Witness, ELSIE WILKE
Gertrude A. Ganzhorn
Proprietor
Alton D. Simms
Witness, ALTON D. SIMMS

ACKNOWLEDGEMENT

STATE OF MICHIGAN
COUNTY OF WASHTENAW

On this 23rd day of OCTOBER, 1951, before me a Notary Public in and for said County, personally appeared the above named Gertrude A. Ganzhorn, a single woman, known to me to be the person who executed the above dedication and acknowledged the same to be her free act and deed.

Mary E. Palmer
Notary Public,
Washtenaw County, Michigan

My Commission Expires JULY 5, 1952

DESCRIPTION OF LAND PLATTED

The annexed plat of "TWIN PINES SUBDIVISION" a subdivision of part of the Northwest Quarter of Section 20, Town Two South, Range Six East, in the City of Ann Arbor, Washtenaw County, Michigan is described as: Commencing at the West Eighth post on the North line of Section 20, Town Two South, Range Six East, thence South 1 degree 09' West 2088.42 feet in the West line of the East Half of the Northwest Quarter of Section 20, thence South 54 degrees 14' East 243.09 feet in the Northerly line of Sunset Road for a place of beginning, thence North 1 degree 09' East 235 feet, thence South 88 degrees 51' East 303.48 feet, thence South 2 degrees 11' West 151.68 feet, thence Southerly 94.73 feet in the arc of a circular curve to the right of 478.88 feet radius through a central angle of 11 degrees 20' the chord bears South 7 degrees 51' West 94.57 feet, thence South 13 degrees 31' West 128.39 feet, thence Southwesterly 52.62 feet in the arc of a circular curve to the right through a central angle of 112 degrees 15' the chord bears South 69 degrees 38' 30" West 44.60 feet thence North 54 degrees 14' West 268.22 feet in the Northerly line of Sunset Road to the place of beginning.

COPY
Register's Office
Washtenaw County
Plat of *Twin Pines Subdivision*
City of Ann Arbor
was recorded this 23rd day of
October 1951 at 1:42 P.M.
P.M.D. Page 11 of 12
Shirley W. Fitch
ORIGINAL ON FILE

Examined and approved
Mary Jewell Purdy
Deputy Auditor General

Examined and approved
Mary Jewell Purdy
Deputy Auditor General

FILED IN AUDITOR GENERAL'S DEPT.
Mary Jewell Purdy
Deputy Auditor General

COUNTY TREASURER'S CERTIFICATE

Office of the County Treasurer,
Washtenaw County, Michigan.
I hereby certify that there are no tax liens or tax titles held by the State on the lands described hereon, and that there are no tax liens or titles held by individuals on said lands, for the five years preceding the 1st day of October, 1951, and that the taxes for said period of five years are all paid, as shown by the records of this office except.....
This certificate does not apply to taxes, if any, now in process of collection by township, city or village collecting officers

W.F. Verner
W.F. Verner, County Treasurer

APPROVAL BY BOARD OF COUNTY AUDITORS

This plat has been examined and was approved on the 23rd day of October, 1951 by the Board of County Auditors, Washtenaw County, Michigan

J. Martin Rempp
Adolph E. Gross
Herbert G. Loeffler

CERTIFICATE OF MUNICIPAL APPROVAL

This plat was approved by the Common Council of the City of Ann Arbor at a meeting held October 15, 1951

Fred J. Looker
Fred J. Looker, Clerk

CERTIFICATE OF APPROVAL BY THE BOARD OF PUBLIC WORKS

This plat was approved by the Board of Public Works of the City of Ann Arbor at a meeting held Oct. 5, 1951

Fred J. Looker
Fred J. Looker, Clerk

CERTIFICATE OF APPROVAL BY THE CITY PLANNING COMMISSION

This plat was approved by the Planning Commission of the City of Ann Arbor at a meeting held Sep 25 1951

Frederick N. McOmber
Frederick N. McOmber, Chairman
William C. Walz
William C. Walz, Secretary

SURVEYOR'S CERTIFICATE

I hereby certify that the plat hereon delineated is a correct one and that permanent metal monuments consisting of bars of not less than one half inch in diameter and 48 inches in length, in concrete cylinders of at least 4 inches in diameter and 48 inches in length have been placed at points marked © as shown thereon at all angles of the boundaries of the land platted, at all intersections of streets with the boundaries of the plat as shown on said plat.

Alton D. Simms
Alton D. Simms, Reg Land Surveyor