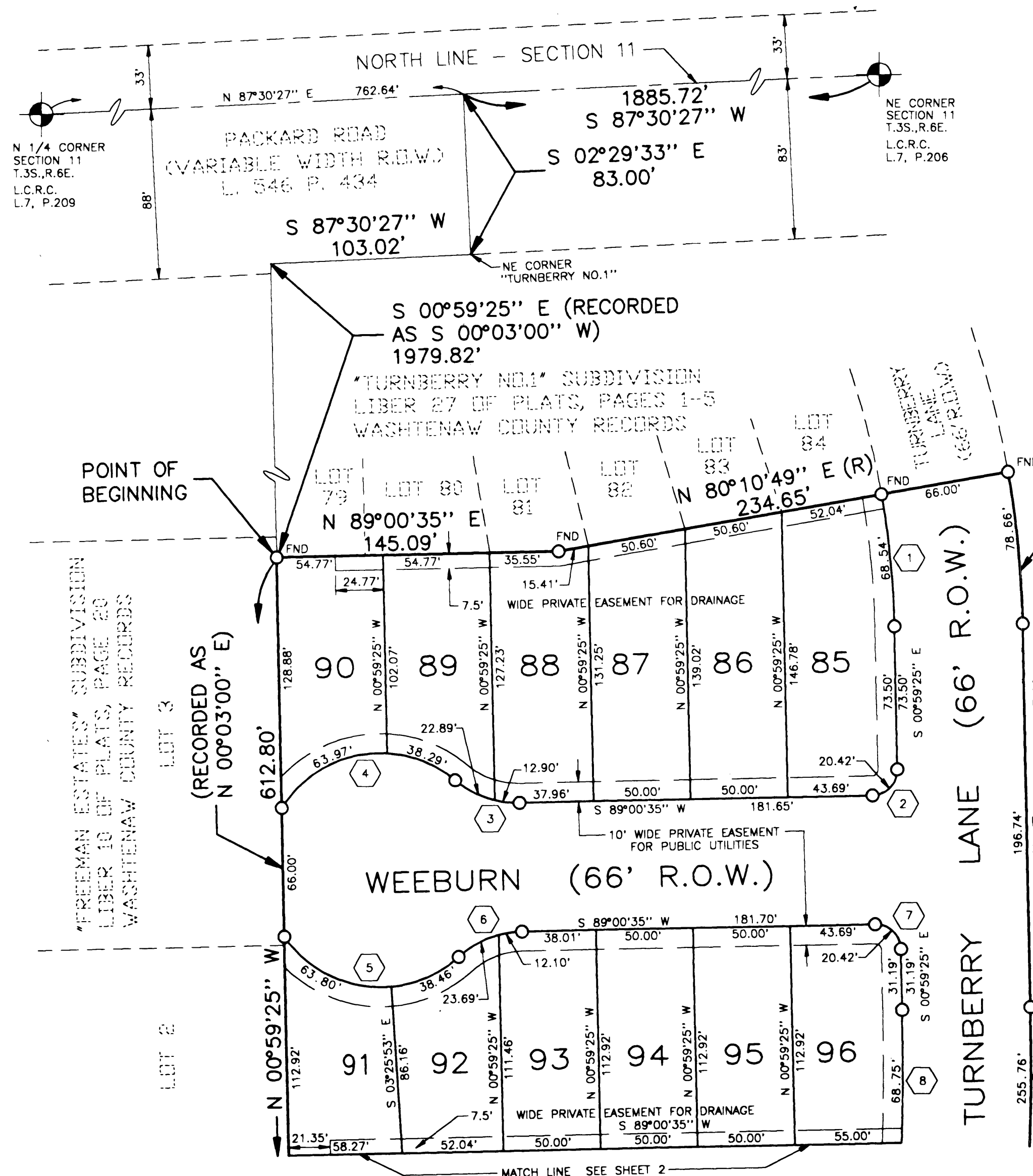


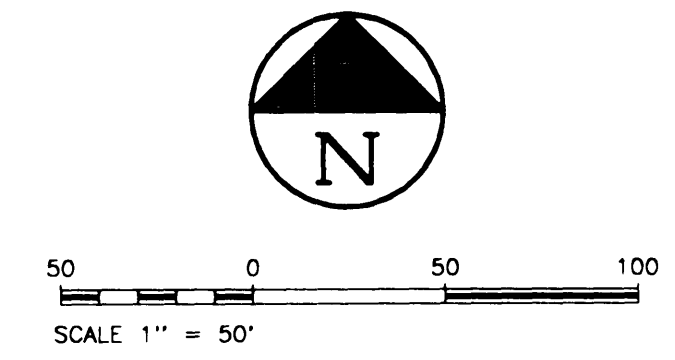
TURNBERRY NO. 2

PART OF THE N.E. 1/4 AND THE S.E. 1/4 OF SECTION 11, T.3 S., R.6 E.,
CITY OF ANN ARBOR
WASHTENAW COUNTY, MICHIGAN

LEGEND:
ALL DIMENSIONS ARE SHOWN IN FEET.
ALL CURVILINEAR DIMENSIONS ARE SHOWN ALONG THE ARC.
THE SYMBOL "O" INDICATES A CONCRETE MONUMENT WHICH IS 4" IN DIAMETER X 36" LONG ENCASED IN A 1/2" IRON ROD.
THE SYMBOL (R) DENOTES A RADIAL LOT LINE.
ALL LOT MARKERS ARE 3/4" IRON PIPE AND ARE 18" IN LENGTH CAPPED WITH YELLOW PLASTIC CAPS BEARING THE SURVEYOR'S REGISTRATION NUMBER #21561.
BEARINGS WERE ESTABLISHED FROM THE M.D.O.T. R.O.W. PLAN 81-R-1 SHEET 27.
THE SYMBOL "O" INDICATES A SET MONUMENT UNLESS OTHERWISE NOTED.



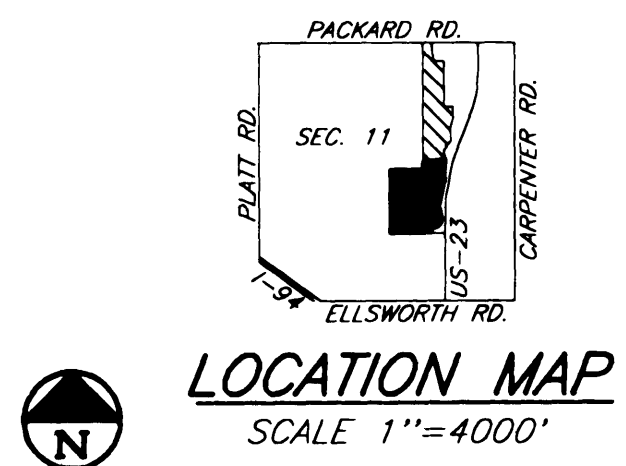
CURVE	RADIUS	DELTA	ARC	CHORD	BEARING
#1	444.47'	08°50'06"	68.54'	68.47'	S5°24'28"E
#2	13.00'	90°00'00"	20.42'	18.38'	S44°00'35"W
#3	50.00'	41°00'51"	35.79'	35.03'	N70°28'59"W
#4	60.00'	97°38'50"	102.26'	90.32'	N81°12'02"E
#5	60.00'	97°38'50"	102.26'	90.32'	N83°10'51"W
#6	50.00'	41°00'51"	35.79'	35.03'	N68°30'10"E
#7	13.00'	90°00'00"	20.42'	18.38'	S45°59'25"E
#8	1399.40'	06°56'55"	169.71'	169.61'	S02°29'03"W



CERTIFIED TRUE COPY OF
RECORDED PLAT
BY DEPARTMENT OF COMMERCE

By: *Richard E. Lomax*
Richard E. Lomax, L.S. NH
Manager
Subdivision Control Unit

Date: *June 14, 1994*



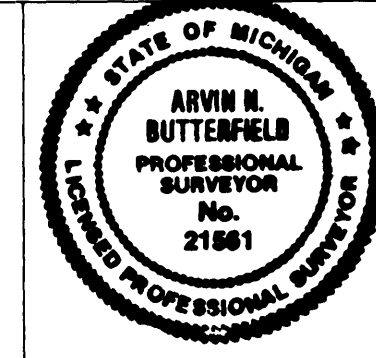
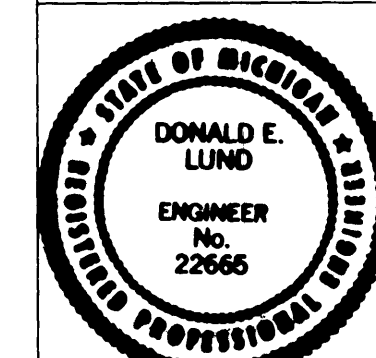
$\Delta = 08^\circ 49' 46''$
A = 78.66'
R = 510.47'
CHD = 78.59'
CHD BRG = S 05°24'18" E

$\Delta = 10^\circ 00' 00''$
A = 255.76'
R = 1465.40'
CHD = 255.44'
CHD BRG = S 04°00'35" W

PREPARED AND DRAFTED BY

3131 South State Street.
Ann Arbor MI 48108

Donald E. Lund *Arvin N. Butterfield*
DONALD E. LUND P.E. ARVIN N. BUTTERFIELD P.S.



TURNBERRY NO. 2

PART OF THE N.E. 1/4 AND THE S.E.
1/4 OF SECTION 11, T.3 S., R.6 E.,
CITY OF ANN ARBOR
WASHTENAW COUNTY, MICHIGAN

CURVE DATA TABLE					
CURVE	RADIUS	DELTA	ARC	CHORD	BEARING
#8	1399.40'	06°56'55"	169.71'	169.61'	S02°29'03"W
#9	13.00'	83°03'05"	18.84'	17.24'	S47°29'03"W
#10	50.00'	41°00'53"	35.79'	35.03'	N70°28'59"W
#11	60.00'	262°01'43"	274.40'	90.55'	N00°59'25"W
#12	50.00'	41°00'51"	35.79'	35.03'	N68°30'09"E
#13	13.00'	100°00'00"	22.69'	19.92'	S40°59'25"E
#14	13.00'	79°23'07"	18.01'	16.61'	S48°42'07"W

LEGEND:

ALL DIMENSIONS ARE SHOWN IN FEET.

ALL CURVILINEAR DIMENSIONS ARE SHOWN ALONG THE ARC.

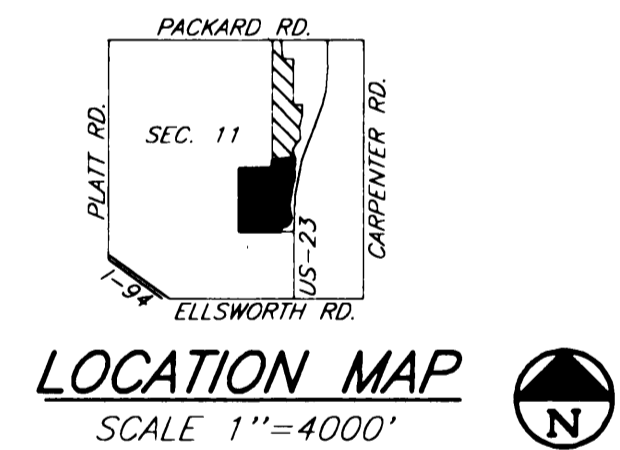
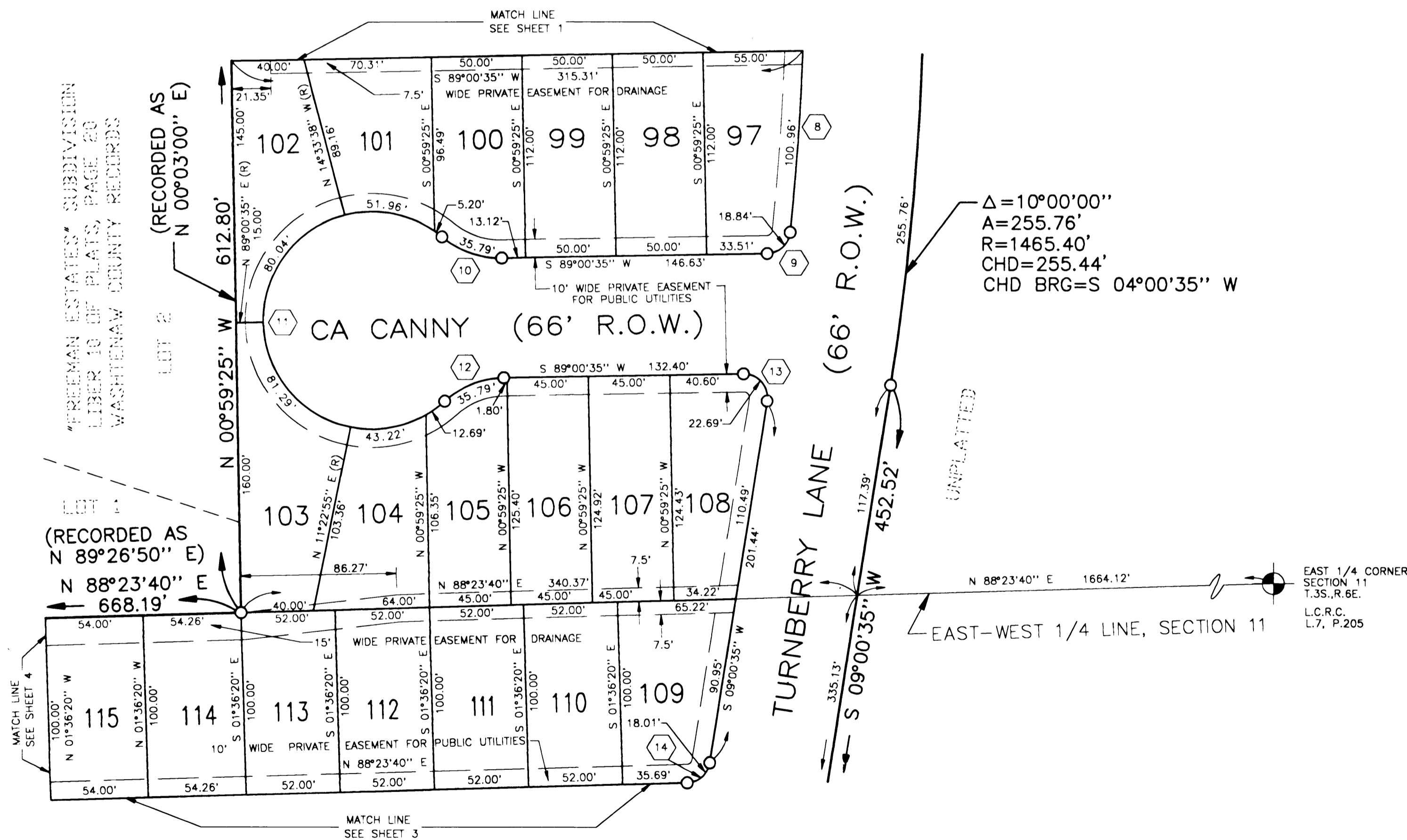
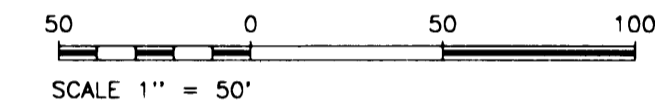
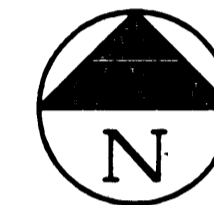
THE SYMBOL "O" INDICATES A CONCRETE MONUMENT WHICH IS 4" IN DIAMETER X 36" LONG ENCASING A 1/2" IRON ROD.

THE SYMBOL (R) DENOTES A RADIAL LOT LINE.

ALL LOT MARKERS ARE 3/4" IRON PIPE AND ARE 18" IN LENGTH CAPPED WITH YELLOW PLASTIC CAPS BEARING THE SURVEYOR'S REGISTRATION NUMBER #21561.

BEARINGS WERE ESTABLISHED FROM THE M.D.O.T. R.O.W. PLAN 81-R-1 SHEET 27.

THE SYMBOL "O" INDICATES A SET MONUMENT UNLESS OTHERWISE NOTED.



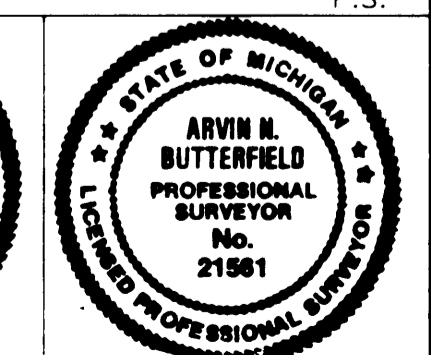
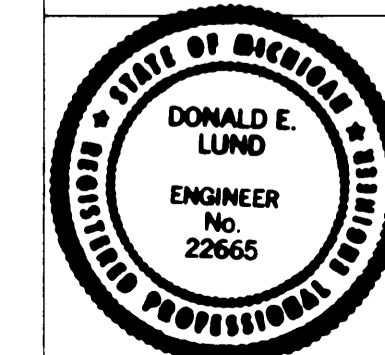
PREPARED AND DRAFTED BY

3131 South State Street
Ann Arbor MI 48108

McNAMEE
ENGINEERING EXCELLENCE SINCE 1914

McNAMEE FORTER & SEELEY, INC.

Donald E. Lund *Arvin N. Butterfield*
DONALD E. LUND P.E. ARVIN N. BUTTERFIELD P.S.



TURNBERRY NO. 2

PART OF THE N.E. 1/4 AND THE S.E. 1/4
OF SECTION 11, T.3 S., R.6 E.,
CITY OF ANN ARBOR
WASHTENAW COUNTY, MICHIGAN

LEGEND:

ALL DIMENSIONS ARE SHOWN IN FEET.

ALL CURVILINEAR DIMENSIONS ARE SHOWN ALONG THE ARC.

THE SYMBOL "O" INDICATES A CONCRETE MONUMENT WHICH IS 4" IN DIAMETER X 36" LONG ENCASED A 1/2" IRON ROD.

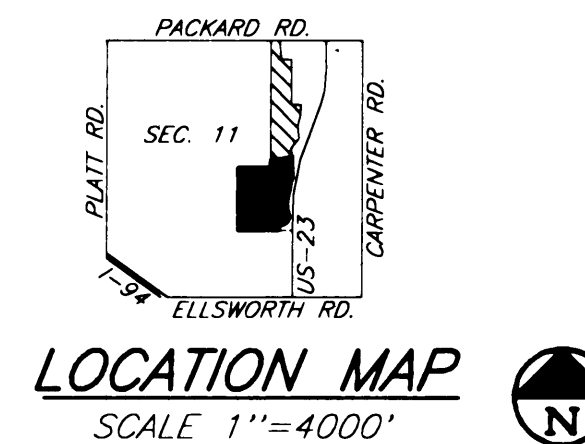
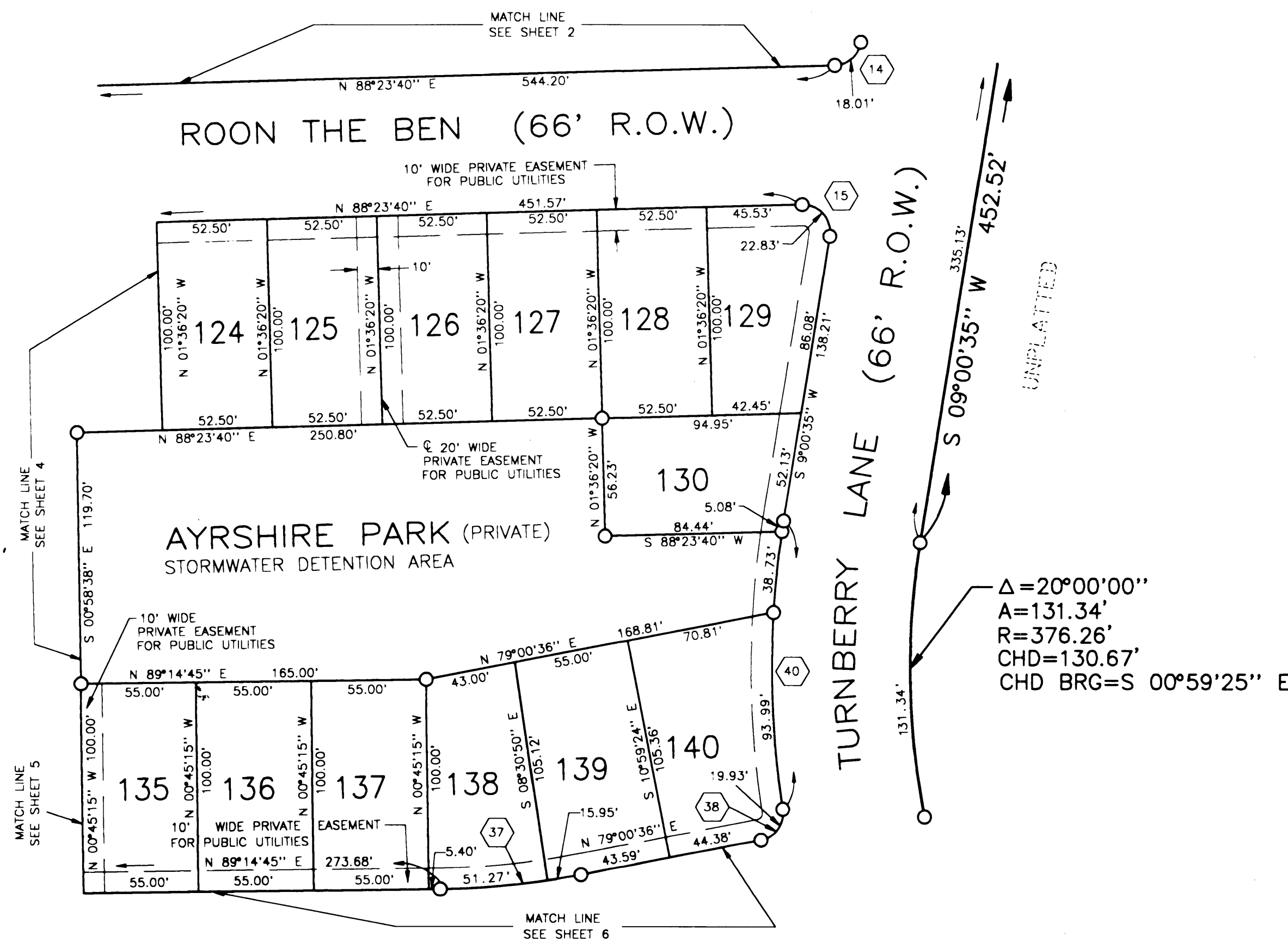
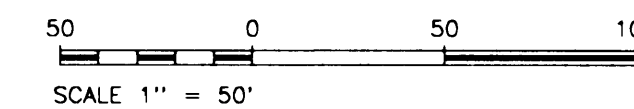
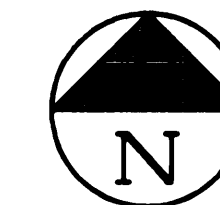
THE SYMBOL (R) DENOTES A RADIAL LOT LINE.

ALL LOT MARKERS ARE 3/4" IRON PIPE AND ARE 18" IN LENGTH CAPPED WITH YELLOW PLASTIC CAPS BEARING THE SURVEYOR'S REGISTRATION NUMBER #21561.

BEARINGS WERE ESTABLISHED FROM THE M.D.O.T. R.O.W. PLAN 81-R-1 SHEET 27.

THE SYMBOL "O" INDICATES A SET MONUMENT UNLESS OTHERWISE NOTED.

CURVE DATA TABLE					
CURVE	RADIUS	DELTA	ARC	CHORD	BEARING
#14	13.00'	79°23'07"	18.01'	16.61'	S48°42'07"W
#15	13.00'	100°36'55"	22.83'	20.01'	S41°17'52"E
#37	376.26'	10°14'09"	67.22'	67.13'	S84°07'40"W
#38	13.00'	87°51'04"	19.93'	18.04'	S35°05'04"W
#40	442.26'	17°51'03"	137.80'	137.23'	N00°05'03"E



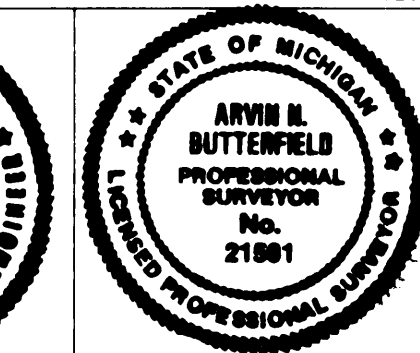
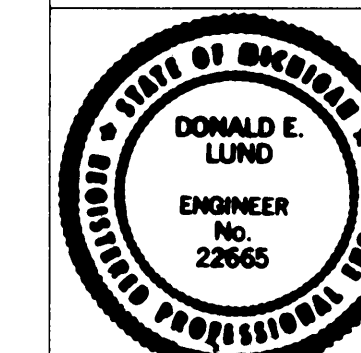
PREPARED AND DRAFTED BY

3131 South State Street
Ann Arbor MI 48108



M. N. MEE FORTER & SEELY, INC.

Donald E. Lund *Arvin N. Butterfield*
DONALD E. LUND P.E. ARVIN N. BUTTERFIELD P.S.



TURNBERRY NO. 2

PART OF THE N.E. 1/4 AND THE S.E. 1/4 OF SECTION 11, T.3 S., R.6 E.,
CITY OF ANN ARBOR
WASHTENAW COUNTY, MICHIGAN

CURVE DATA TABLE					
CURVE	RADIUS	DELTA	ARC	CHORD	BEARING
#16	13.00'	89°22'18"	20.28'	18.28'	N43°42'31"E
#17	271.73'	33°50'57"	160.53'	158.21'	N71°28'11"E
#18	13.00'	95°34'40"	21.69'	19.26'	S48°45'58"E
#19	205.73'	84°25'21"	303.13'	276.45'	N41°14'02"E
#20	271.73'	33°50'58"	160.54'	158.21'	N15°56'51"E
#21	60.00'	258°40'42"	270.88'	92.81'	N43°42'31"E
#22	8.00'	118°30'00"	16.55'	13.75'	N66°12'13"W
#23	8.00'	118°30'00"	16.55'	13.75'	S26°22'45"E
#26	60.00'	25°50'44"	27.07'	26.84'	S11°56'44"W

"FREEMAN ESTATES" SUBDIVISION
LIBER 10 OF PLATS, PAGE 20
WASHTENAW COUNTY RECORDS

LEGEND:

ALL DIMENSIONS ARE SHOWN IN FEET.

ALL CURVILINEAR DIMENSIONS ARE SHOWN ALONG THE ARC.

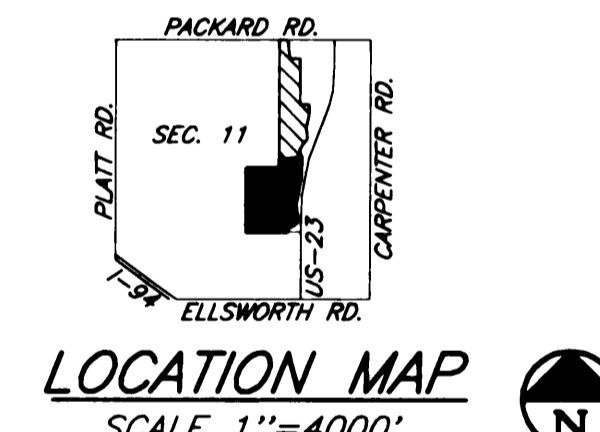
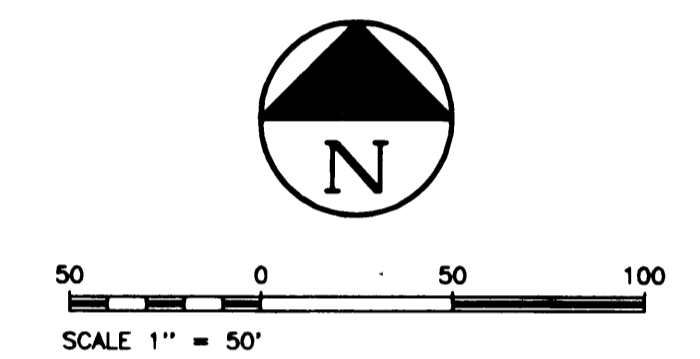
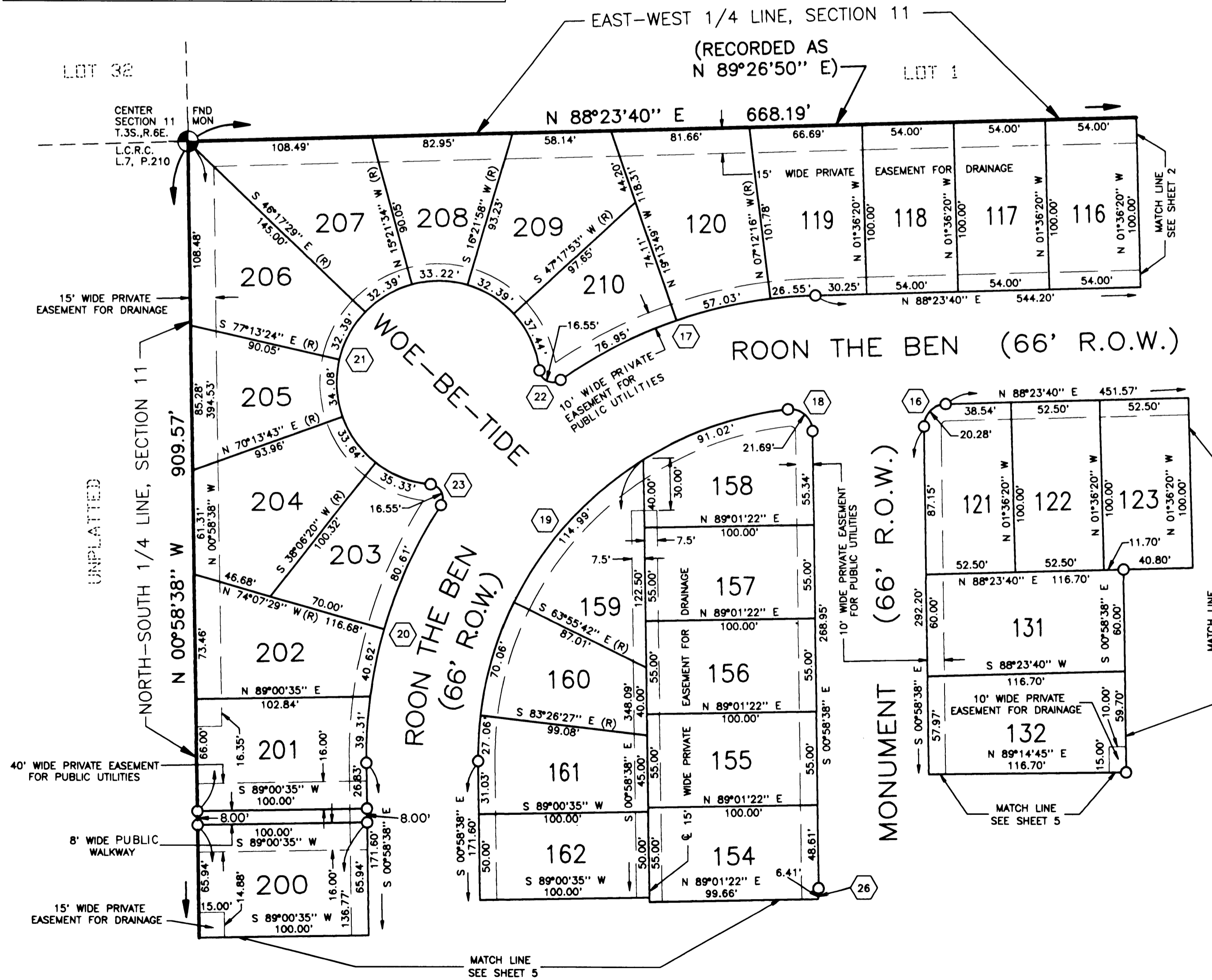
THE SYMBOL "O" INDICATES A CONCRETE MONUMENT WHICH IS 4" IN DIAMETER X 36" LONG ENCASED A 1/2" IRON ROD.

THE SYMBOL (R) DENOTES A RADIAL LOT LINE.

ALL LOT MARKERS ARE 3/4" IRON PIPE AND ARE 18" IN LENGTH CAPPED WITH YELLOW PLASTIC CAPS BEARING THE SURVEYOR'S REGISTRATION NUMBER #21561.

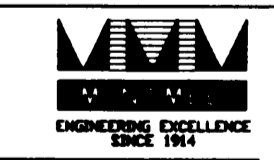
BEARINGS WERE ESTABLISHED FROM THE M.D.O.T. R.O.W. PLAN 81-R-1 SHEET 27.

THE SYMBOL "O" INDICATES A SET MONUMENT UNLESS OTHERWISE NOTED.

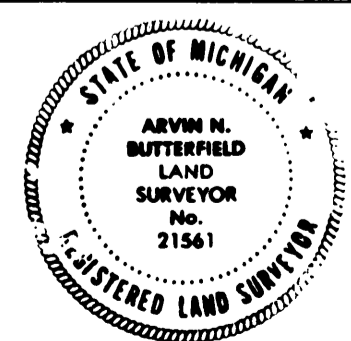
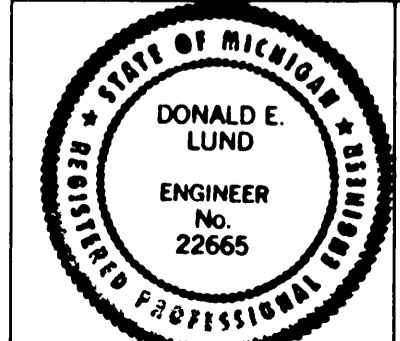


PREPARED AND DRAFTED BY

3131 South State Street
Ann Arbor MI 48108



Donald E. Lund Arvin N. Butterfield
DONALD E. LUND P.E. ARVIN N. BUTTERFIELD P.S.



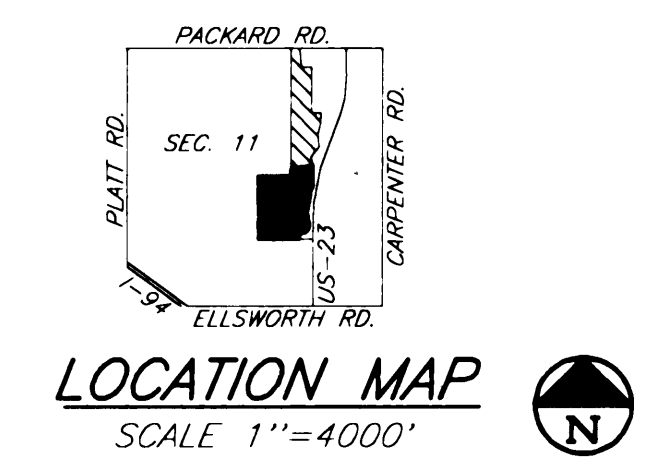
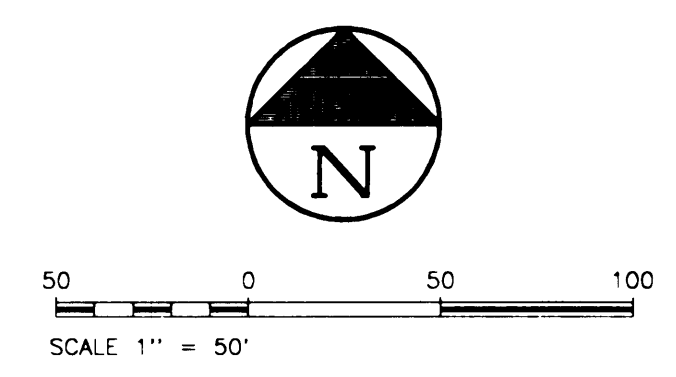
4 OF 8
05/23/1994
POL18004
TURNBERRY NO. 2
LIBER 29 PAGE 49-56

TURNBERRY NO. 2

PART OF THE N.E. 1/4 AND THE S.E. 1/4 OF SECTION 11, T.3 S., R.6 E., CITY OF ANN ARBOR WASHTENAW COUNTY, MICHIGAN

CURVE DATA TABLE					
CURVE	RADIUS	DELTA	ARC	CHORD	BEARING
#24	60.00'	25°46'28"	26.99'	26.76'	N76°21'31"E
#25	60.00'	141°23'49"	148.07'	113.26'	N45°49'48"W
#26	60.00'	25°50'44"	27.07'	26.84'	S11°56'44"W
#27	13.00'	90°00'47"	20.42'	18.39'	N46°06'07"W
#28	205.73'	89°46'37"	322.37'	290.38'	N45°51'56"W
#29	271.73'	34°11'03"	162.13'	159.73'	N73°39'43"W
#30	60.00'	260°20'54"	272.63'	91.69'	N45°51'56"W
#31	8.00'	119°28'14"	16.68'	13.82'	N63°41'44"E
#32	271.73'	34°11'02"	162.12'	159.73'	N18°04'09"W
#33	8.00'	119°28'04"	16.68'	13.82'	S24°34'21"W
#34	105.73'	89°46'37"	165.67'	149.24'	N45°51'56"W

LEGEND:
 ALL DIMENSIONS ARE SHOWN IN FEET.
 ALL CURVILINEAR DIMENSIONS ARE SHOWN ALONG THE ARC.
 THE SYMBOL "O" INDICATES A CONCRETE MONUMENT WHICH IS 4" IN DIAMETER X 36" LONG ENCASED A 1/2" IRON ROD.
 THE SYMBOL (R) DENOTES A RADIAL LOT LINE.
 ALL LOT MARKERS ARE 3/4" IRON PIPE AND ARE 18" IN LENGTH CAPPED WITH YELLOW PLASTIC CAPS BEARING THE SURVEYOR'S REGISTRATION NUMBER #21561.
 BEARINGS WERE ESTABLISHED FROM THE M.D.O.T. R.O.W. PLAN 81-R-1 SHEET 27.
 THE SYMBOL "O" INDICATES A SET MONUMENT UNLESS OTHERWISE NOTED.



PREPARED AND DRAFTED BY

3131 South State Street
Ann Arbor MI 48108

McNAMEE
ENGINEERING EXCELLENCE SINCE 1914

McNAMEE PORTER & SEELEY INC

Donald E. Lund *Arvin N. Butterfield*
DONALD E. LUND P.E. ARVIN N. BUTTERFIELD P.S.

STATE OF MICHIGAN
DONALD E. LUND
ENGINEER
No. 22665

STATE OF MICHIGAN
ARVIN N. BUTTERFIELD
PROFESSIONAL SURVEYOR
No. 21561

3 OF 8
 05/23/1994
 PLAT NO. 2
 PLAT 19-56

TURNBERRY NO. 2

PART OF THE N.E. 1/4 AND THE S.E.
1/4 OF SECTION 11, T.3 S., R.6 E.,
CITY OF ANN ARBOR
WASHTENAW COUNTY, MICHIGAN

CURVE DATA TABLE					
CURVE	RADIUS	DELTA	ARC	CHORD	BEARING
#35	13.00'	90°00'00"	20.42'	18.38'	S55°59'25"E
#36	442.26'	10°14'10"	79.01'	78.91'	S84°07'40"W
#37	376.26'	10°14'09"	67.22'	67.13'	S84°07'40"W
#38	13.00'	87°5'04"	19.93'	18.04'	S35°05'04"W
#39	110.24'	100°14'10"	192.86'	169.19'	S39°07'40"W

LEGEND:

ALL DIMENSIONS ARE SHOWN IN FEET.

ALL CURVILINEAR DIMENSIONS ARE SHOWN ALONG THE ARC.

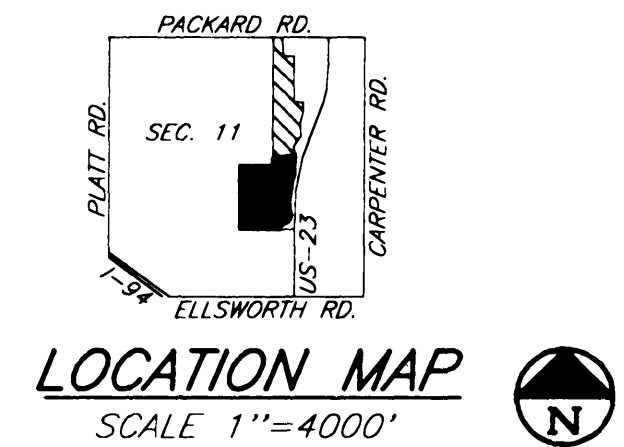
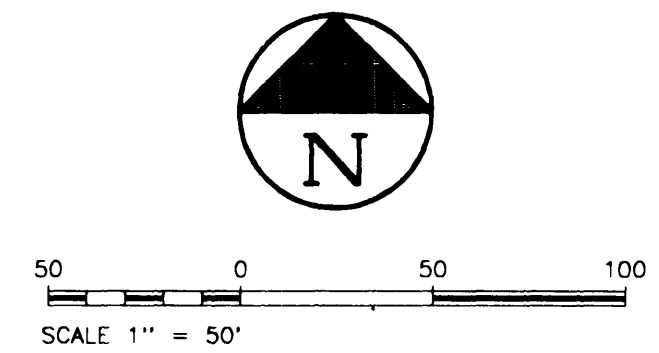
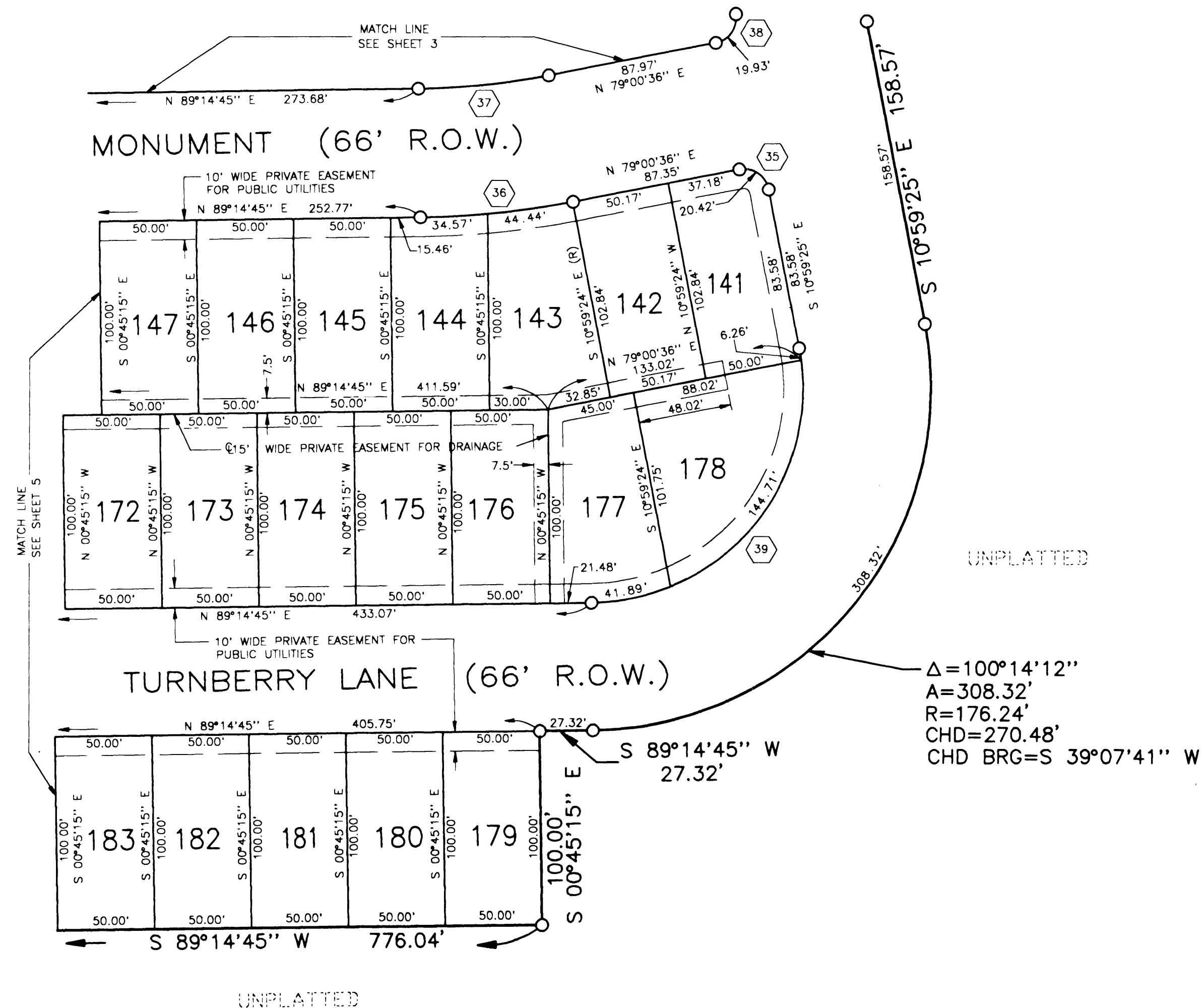
THE SYMBOL "O" INDICATES A CONCRETE MONUMENT WHICH IS 4" IN DIAMETER X 36" LONG ENCASING A 1/2" IRON ROD.

THE SYMBOL (R) DENOTES A RADIAL LOT LINE.

ALL LOT MARKERS ARE 3/4" IRON PIPE AND ARE 18" IN LENGTH CAPPED WITH YELLOW PLASTIC CAPS BEARING THE SURVEYOR'S REGISTRATION NUMBER #21561.

BEARINGS WERE ESTABLISHED FROM THE M.D.O.T. R.O.W. PLAN 81-R-1 SHEET 27.

THE SYMBOL "O" INDICATES A SET MONUMENT UNLESS OTHERWISE NOTED.



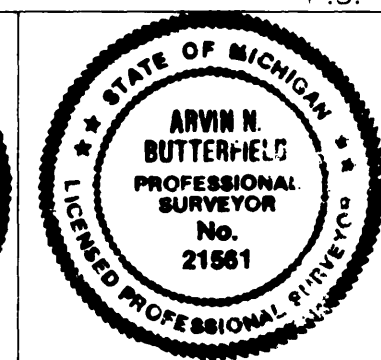
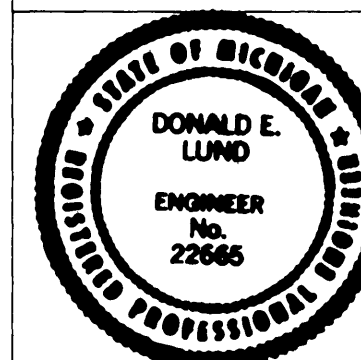
PREPARED AND DRAFTED BY

3131 South State Street
Ann Arbor MI 48108

McNAMEE
ENGINEERING EXCELLENCE
SINCE 1914

McNAMEE PORTER & SEELEY, INC.

Donald E. Lund *Arvin N. Butterfield*
DONALD E. LUND P.E. ARVIN N. BUTTERFIELD P.S.



TURNBERRY NO. 2

PART OF THE N.E. 1/4 AND THE S.E. 1/4 OF SECTION 11, T.3 S., R.6 E. CITY OF ANN ARBOR WASHTENAW COUNTY, MICHIGAN

SURVEYOR'S CERTIFICATE

I, Arvin N. Butterfield, surveyor, certify:

That I have surveyed, divided and mapped the land shown on this plat, described as follows: "Turnberry No. 2," A subdivision of part of the N.E. 1/4 and the S.E. 1/4 of Section 11, Town 3 South, Range 6 East, City of Ann Arbor, Washtenaw County, Michigan, described as: Commencing at the Northeast Corner of Section 11, thence S 87°30'27" W 1,885.72 feet along the North line of said Section 11, thence S 02°29'33" E 83.00 feet to the Northeast corner of "Turnberry No. 1" as recorded in Liber 27 of Plats, Pages 1 through 5, Washtenaw County records; thence S 87°30'27" W 103.02 feet along the North line of "Turnberry No. 1"; thence S 00°59'25" E (previously recorded as S 00°03'00" W in "Freeman Estates," a Subdivision recorded in Liber 10 of Plats, page 20, Washtenaw County records) 1979.82 feet along the West line of "Turnberry No. 1" to the POINT OF BEGINNING; thence along the Southerly line of "Turnberry No. 1" in the following two courses: (1) N 89°00'35" E 145.09 feet, (2) N 80°10'49" E 234.65 feet to the Easterly right-of-way line of Turnberry Lane; thence along the Easterly right-of-way of Turnberry Lane in the following eight courses: (1) 78.66 feet along the arc of a non-tangent curve to the right, having a radius of 510.47 feet and a central angle of 8°49'46", the long chord of which bears S 05°24'18" E 78.59 feet; (2) S 00°59'25" E 196.74 feet; (3) 255.76 feet along the arc of a curve to the right, having a radius of 1465.40 feet and a central angle of 10°00'00", the long chord of which bears S 04°00'35" W 255.44 feet; (4) S 09°00'35" W 452.52 feet; (5) 131.34 feet along the arc of curve to the left, having a radius of 376.26 feet and a central angle of 20°00'00", the long chord of which bears S 00°59'25" E 130.67 feet; (6) S 10°59'25" E 158.57 feet; (7) 308.32 feet along the arc of a curve to the right, having a radius of 176.24 feet and a central angle of 100°14'12", the long chord of which bears S 39°07'41" W 270.48 feet; (8) S 89°14'45" W 27.32 feet; thence S 00°45'15" E 100.00 feet; thence S 89°14'45" W 776.04 feet to a point on the North-South 1/4 line of said Section 11; thence N 00°58'38" W 909.57 feet to the Center of Section 11; thence N 88°23'40" E 668.19 feet along the East-West 1/4 line of said Section 11 (previously recorded as N 89°26'50" E in "Freeman Estates"); thence N 00°59'25" W (previously recorded as N 00°03'00" W along the East line of "Freeman Estates") 612.80 feet back to the POINT OF BEGINNING. Containing 126 lots numbered 85 through 210 inclusive and 1 park. Containing 25.18 acres of land, more or less.

That I have made such survey, land-division and plat by the direction of the owners of such land.

That such plat is a correct representation of all the exterior boundaries of the land surveyed and the subdivision of it.

That the required monuments and lot makers have been located in the ground or that surety has been deposited with the municipality, as required by Section 125 of the act.

That the accuracy of survey is within the limits required by Section 126 of the act.

That the bearings shown on the plat are expressed as required by Section 126(3) of the act and as explained in the legend.

April 26, 1993
Date

McNamee, Porter, and Seeley, Inc.
3131 S. State Street
Ann Arbor, Michigan 48104

Arvin N. Butterfield
Arvin N. Butterfield
P.S. No. 21561

Donald E. Lund
Donald E. Lund, P.E.
P.E. No. 22665
Senior Vice-President

PROPRIETOR'S CERTIFICATE

Kime Brothers, Incorporated, a corporation duly organized and existing under the laws of the State of Michigan by Curtis A. Kime, President, and Robert D. Kime, Secretary, as proprietor, has caused the land to be surveyed, divided, mapped, and dedicated as represented on this plat and that the streets, courts and walkway are for the use of the public; that Ayrshire Park is a private park for stormwater detention purposes only; that the public utility easements are private easements and that all other easements are for the uses shown on the plat.

Kime Brothers, Incorporated
24678 Lahser
Suite 1
Southfield, Michigan 48034

Arvin N. Butterfield
Witness

Curtis A. Kime
Curtis A. Kime
President

Donald J. Bendzinski
Donald J. Bendzinski
Witness

Robert D. Kime
Robert D. Kime
Secretary

ACKNOWLEDGMENT

State of Michigan)

S.S.

Washtenaw County)

Personally came before me this 27th day of April, 1993, Curtis A. Kime, President, and Robert D. Kime, Secretary, of the above-named corporation, to me known to be the persons who executed the foregoing instrument, and to me known to be such President and Secretary of said corporation, and acknowledged that they executed the foregoing instrument as such officers as the free act and deed of said corporation, by its authority.

Notary Public, Lou Ann Openo, Washtenaw County, Michigan

My commission expires 10/24/94

PROPRIETOR'S CERTIFICATE

Turnberry Development Corporation, a corporation duly organized and existing under the laws of the State of Michigan by Edward A. Shaffran, President, and Cindy L. Shaffran, Secretary, as proprietor, has caused the land to be surveyed, divided, mapped, and dedicated as represented on this plat and that the streets, courts and walkway are for the use of the public; that Ayrshire Park is a private park for stormwater detention purposes only; that the public utility easements are private easements and that all other easements are for the uses shown on the plat.

Turnberry Development Corporation
120 E. Liberty Street
Suite 360
Ann Arbor, Michigan 48104

Arvin N. Butterfield
Witness

Edward A. Shaffran
Edward A. Shaffran
President

Donald J. Bendzinski
Donald J. Bendzinski
Witness

Cindy L. Shaffran
Cindy L. Shaffran
Secretary

ACKNOWLEDGMENT

State of Michigan)

S.S.

Washtenaw County)

Personally came before me this 27th day of April, 1993, Edward A. Shaffran, President, and Cindy L. Shaffran, Secretary, of the above-named corporation, to me known to be the persons who executed the foregoing instrument, and to me known to be such President and Secretary of said corporation, and acknowledged that they executed the foregoing instrument as such officers as the free act and deed of said corporation, by its authority.

Notary Public, Lou Ann Openo, Washtenaw County, Michigan

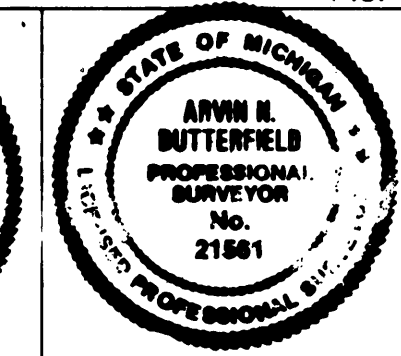
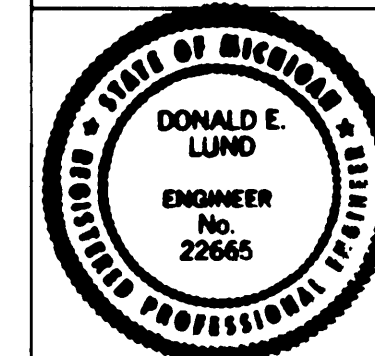
My commission expires 10/24/94

PREPARED AND DRAFTED BY

3131 South State Street
Ann Arbor MI 48108



Donald E. Lund, P.E. Arvin N. Butterfield, P.S.



TURNBERRY NO. 2

PART OF THE N.E. 1/4 AND THE S.E. 1/4 OF SECTION 11, T.3 S., R.6 E.
CITY OF ANN ARBOR
WASHTENAW COUNTY, MICHIGAN

PROPRIETOR'S CERTIFICATE

Society Bank, Michigan, a corporation duly organized and existing under the laws of the state of Michigan by Michael F. Nold, Senior Vice-President, and Jeffrey A. Carter, Senior Vice-President, as proprietor, has caused the land to be surveyed, divided, mapped, and dedicated as represented on this plat and that the streets, courts and walkway are for the use of the public; that Ayrshire Park is a private park for stormwater detention purposes only; that the public utility easements are private easements and that all other easements are for the uses shown on the plat

Society Bank, Michigan
100* South Main Street
Ann Arbor, Michigan 48104

Margaret J. Eisenstodt

Margaret J. Eisenstodt
Witness

Michael F. Nold

Michael F. Nold
Senior Vice-President

Sonja B. Caprara

Sonja B. Caprara
Witness

Jeffrey A. Carter

Jeffrey A. Carter
Senior Vice-President

ACKNOWLEDGMENT

State of Michigan)

) S.S.

Washtenaw County)

Personally came before me this 28th day of April, 1993
Michael F. Nold, Senior Vice-President, and Jeffrey A. Carter, Senior Vice-President, of the above-named corporation, to me known to be the persons who executed the foregoing instrument, and to me known to be such Senior Vice-President and Senior Vice-President of said corporation, and acknowledged that they executed the foregoing instrument as such officers as the free act and deed of said corporation, by its authority.

Notary Public Peter F. Schork Washtenaw County, Michigan
Peter F. Schork

My commission expires July 26, 1993

COUNTY TREASURER'S CERTIFICATE

The records in my office show no unpaid taxes or special assessments for the five years preceding May 4, 1993, involving the lands included in this plat.

Nancy Davis
Nancy Davis, County Treasurer
Washtenaw County

COUNTY DRAIN COMMISSIONER'S CERTIFICATE

Approved on 28 May, 1993, as complying with Section 192 of Act 288, P.A. 1967, and the applicable rules and regulations published by my office in the County of Washtenaw.

Janis A. Bobrin
Janis A. Bobrin, Drain Commissioner

CERTIFICATE OF MUNICIPAL APPROVAL

I certify that this plat was approved by the City Council of the City of Ann Arbor at a meeting held 21 June 1993 and was reviewed and found to be in compliance with Act 288, P.A. of 1967. Proper surety has been posted with the City of Ann Arbor to ensure the installation of public sewer and public water services. The City does have a proper adopted zoning and subdivision control ordinance which waives the minimum lot size specified. Proper surety has been placed with the City of Ann Arbor to ensure the placement of monuments and lot corners prior to 21 June 1993.

Winifred Northcross
Winifred Northcross, Clerk
City of Ann Arbor

COUNTY PLAT BOARD CERTIFICATE

This plat has been reviewed and is approved by the Washtenaw county plat board on July 7, 1993, 1993, as being in compliance with all of the provisions of Act 288, P.A. 1967, and the plat board's applicable rules and regulations.

Peggy M. Haines
Peggy M. Haines
County Clerk / Register of Deed

Nancy Davis
Nancy Davis, County Treasurer

Mary Egnat
Mary Egnat, Chairman Plat Board
Board of Commissioners

RECORDING CERTIFICATE

State of Michigan

Washtenaw County

This plat was received for record on the 28th day of May, 1993, at 1:05 P.M., and recorded in Liber 29 of Plats on page 49-56.

Peggy M. Haines
Peggy M. Haines
County Clerk / Register of Deeds

PREPARED AND DRAFTED BY

3131 South State Street
Ann Arbor MI 48108



M. NAME ENGINEERING EXCELLENCE SINCE 1914

Donald E. Lund Arvin N. Butterfield
DONALD E. LUND P.E. ARVIN N. BUTTERFIELD P.S.

