

12-16-47

SPRING HILLS SUBDIVISION OF VESPER HEIGHTS
BEING LOTS 18 AND 19 AND PART OF LOTS 17 AND 20 "SPRING HILL ADDITION" TO THE CITY OF ANN ARBOR,
MICHIGAN AS THE SAME APPEARS ON PAGE 21 OF LIBER 1 OF PLATS IN THE OFFICE OF THE REGISTER OF
DEEDS FOR WASHTENAW COUNTY, MICHIGAN, AND PART OF THE NE 1/4 OF THE SE 1/4 OF SECTION 19, T2S, R6E,
ANN ARBOR CITY AND TOWNSHIP OF ANN ARBOR, WASHTENAW COUNTY, MICHIGAN

0389001 1 OF 1
SPRING HILLS SUBDIVISION OF VESPER HEIGHTS
LIBER 10 PAGE 45 12/08/1947

DEDICATION

KNOW ALL MEN BY THESE PRESENTS, That we Henry B Graves and Mabelle M Graves his wife and The Ann Arbor Trust Company, a Michigan Corporation, Executors, by Leonard A Tappe Vice President and Homer L Heath, Secretary as proprietors have caused the land embraced in the annexed plat to be surveyed, laid out and platted to be known as "SPRING HILLS SUBDIVISION OF VESPER HEIGHTS" being lots 18 & 19 and part of lots 17 & 20 in SPRING HILL ADDITION to the City of Ann Arbor as the same appears on page 21 in Liber 1 of Plats in the Office of the Register of Deeds for Washtenaw County, Michigan and a part of the N.E. 1/4 of the S.E. 1/4 of Section 19, T.2S, R.6E., Ann Arbor City and Township of Ann Arbor, Washtenaw County, Michigan, and that the streets as shown on said plat are hereby dedicated to the use of the public, Hockey Lane to be a private right of way

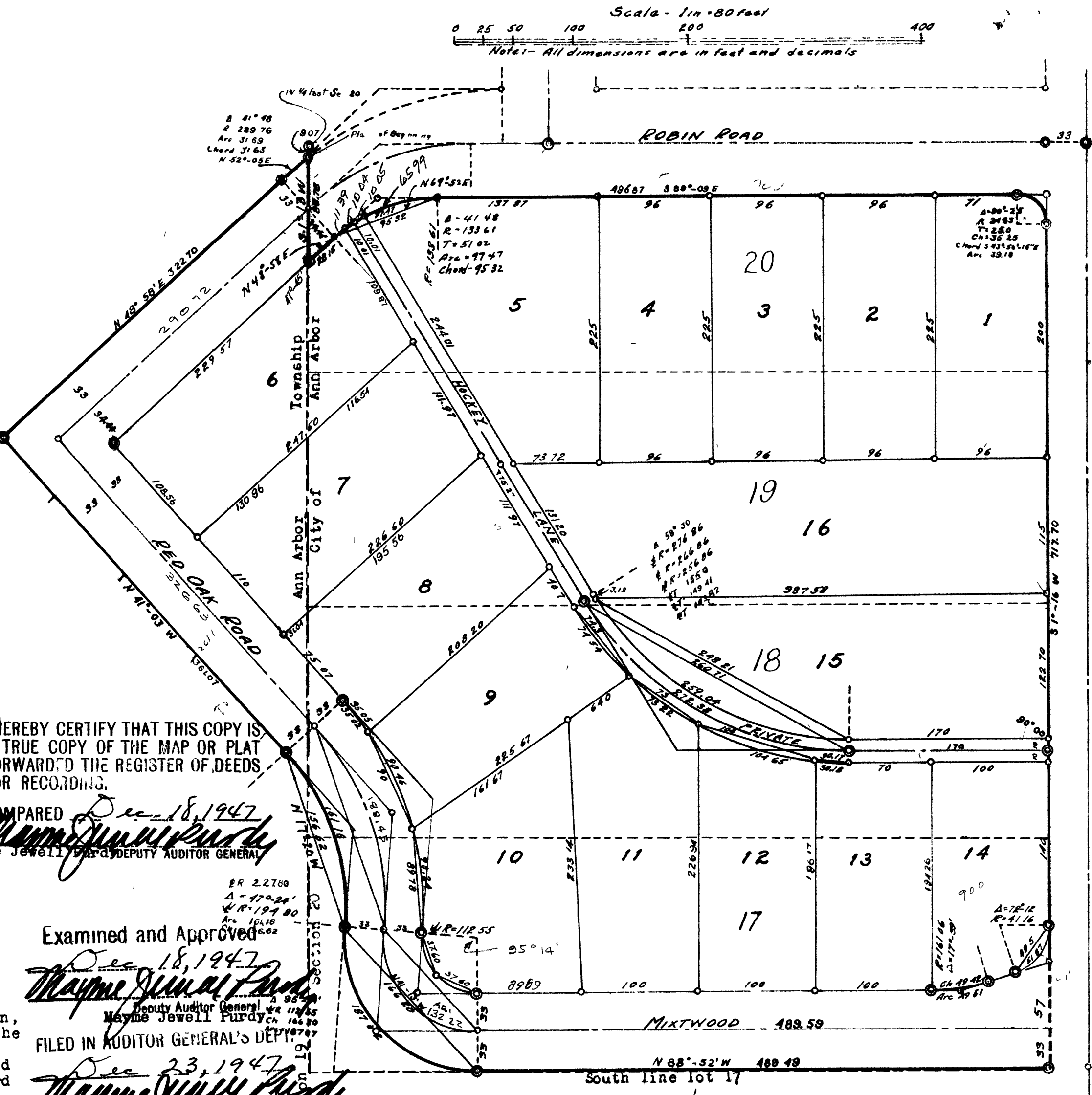
Signed and Sealed in the Presence of
Henry B Graves (L.S.)
Mabelle M Graves (L.S.)
Ann Arbor Trust Company
Leonard A Tappe Vice President
Homer L Heath Secretary

ACKNOWLEDGMENT
I, Notary Public in and for said county, do hereby certify that this copy is a TRUE COPY OF THE MAP OR PLAT FORWARDED TO THE REGISTER OF DEEDS FOR RECORDING.
COMPARED Dec 18, 1947
Mayme Jewell DEPUTY AUDITOR GENERAL

ACKNOWLEDGMENT
I, Notary Public in and for said county, do hereby certify that this copy is a TRUE COPY OF THE MAP OR PLAT FORWARDED TO THE REGISTER OF DEEDS FOR RECORDING.
COMPARED Dec 23, 1947
Mayme Jewell DEPUTY AUDITOR GENERAL

Notary Public, Washtenaw County, Michigan
My Commission expires February 10, 1950

DESCRIPTION
The land embraced in the annexed plat of SPRING HILLS SUBDIVISION OF VESPER HEIGHTS, Being lots 18 & 19 and part of lots 17 and 20 in SPRING HILL ADDITION to the City of Ann Arbor as the same appears on page 21 in Liber 1 of Plats in the Office of the Register of Deeds for Washtenaw County, Michigan and a part of the N.E. 1/4 of the S.E. 1/4 of Section 19, T.2S, R.6E., Ann Arbor City and Township of Ann Arbor, Washtenaw County, Michigan is described as follows
Beginning at a point in the west line of Section 20, Township 2 south, range 6 east, Ann Arbor Township, Washtenaw County, Michigan, 9.07 feet south of the west line of Section 20; thence south 1'-13" west 48'-58" to the beginning of a circular curve to the right of radius 133.61 feet; thence northeasterly in the arc of said curve 31.69 feet to the place of beginning, the chord subtended by said arc being 31.63 feet in length and bears north 52'-09" east,



95 32 feet in length and bears north 69'-52" east, thence south 89'-09" east 496.87 feet along the tangent to the curve last described to the point of curve of a circular curve to the right of radius 24.83 feet, thence southeasterly in the arc of said curve 39.18 feet the chord subtended by said arc being 35.25 feet in length and bears south 43'-56"-15" east to the west line of Brooks Street, thence south 1'-16" west 717.7 feet, thence north 88'-52" west 489.49 feet to the beginning of a circular curve to the right of radius 112.55 feet, thence northwesterly in the arc of said curve 187.07 feet, the chord subtended by said arc being 166.2 feet in length and bears north 41'-13" west, thence northwesterly in the arc of a circular curve to the left of radius 194.80 feet a distance of 161.16 feet the chord subtended by said arc being 156.62 feet in length and bears north 17'-20" west; thence north 41'-03" west 361.07 feet, thence north 48'-58" east 322.70 feet to the beginning of a circular curve to the right of radius 289.76 feet, thence northeasterly in the arc of said curve 31.69 feet to the place of beginning, the chord subtended by said arc being 31.63 feet in length and bears north 52'-09" east,

SURVEYOR'S CERTIFICATE

I hereby certify that the plat hereon delineated is a correct one and that permanent metal monuments consisting of bars not less than one-half inch in diameter and 48 inches in length, or shorter bars of not less than one-half inch in diameter lapped over each other at least 6 inches with an over-all length of not less than 48 inches, encased in a concrete cylinder at least 4 inches in diameter and 48 inches in depth have been placed at points marked thus as thereon shown at all angles in the boundaries of the land platted, at all intersections of streets, intersections of alleys, or of streets and alleys, and at the intersections of streets and alleys with the boundaries of the plat as shown on said plat

Harry H Atwell
Registered Civil Engineer and Surveyor

COUNTY TREASURER'S CERTIFICATE RELATING TO TAXES
(Sec 135, Act 206, 1893, as amended—Sec 4134, C L (1915)
Office of County Treasurer, Washtenaw County

I hereby certify, That there are no tax liens or titles held by the State in the lands described hereon, and that there are no tax liens or titles held by individuals on said lands, for the five years preceding the 19 day of November 1947 and that the taxes for said period of five years are paid, as shown by the records of this office

This certificate does not apply to taxes, if any, now in process of collection by township, city or village collecting officers.
Clyde D. Fleming
County Treasurer

CERTIFICATE OF APPROVAL
BY BOARD OF COUNTY ROAD COMMISSIONERS

This plat has been examined and was approved on the 5th day of December, 1947 by the Washtenaw County Board of Road Commissioners

Geo. Gill, Chairman
James C. Handley, Member

CERTIFICATE OF APPROVAL
BY THE BOARD OF COUNTY AUDITORS

Approved by the Board of Washtenaw County Auditors this 8th day of December, 1947.

J. Martin Rempff, Chairman
W. O. Cushing, Member
John E. Walz, Member

CERTIFICATE OF MUNICIPAL APPROVAL

This plat was approved by the Common Council of the City of Ann Arbor, at a meeting held Dec 19, 1947

Fred C. Perry, Clerk

COPY
Register's Office
Washtenaw County, Michigan
Plat of Spring Hills Subdivision of Vesper Heights
City of Ann Arbor
was recorded this 18th day of December A.D. 1947 at 4 o'clock P. M. in Liber 10 of Plats on Page 45
Allred J. Syme
ORIGINAL ON FILE
Cotton Plat
Multi Color Co
589 Woodward-Detroit

CERTIFICATE OF MUNICIPAL APPROVAL

This plat was approved by the Township Board of the Township of Ann Arbor at a meeting held Dec 15, 1947

Ray F. Wurster, Clerk

CERTIFICATE OF MUNICIPAL APPROVAL

This plat was approved by the City Planning Commission of the City of Ann Arbor at a meeting held Nov. 25, 1947

Sybil K. Bennett, Chairman

CERTIFICATE OF MUNICIPAL APPROVAL

This plat was approved by the Board of Public Works of the City of Ann Arbor, at a meeting held Dec 19, 1947

Fred C. Perry, Clerk