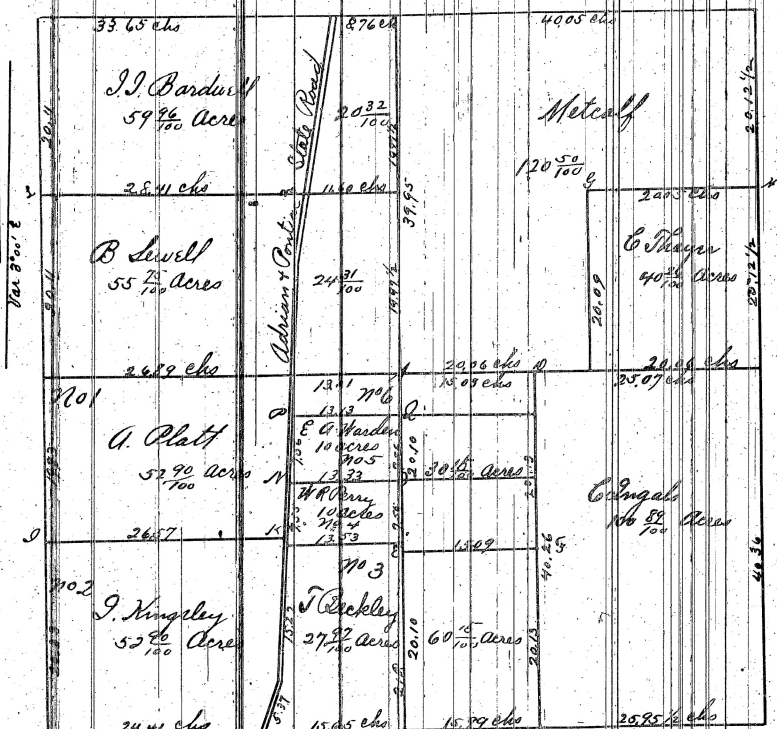


A Plat of the Survey of Section 16 T.2 S. of R.6. E



A Hickory	12	71520	12
B Hickory	5	5220	2 1/2
C Hickory	14	8245	4 1/2
D Hickory	15	837 1/2	8 1/2
E Hickory	30	388	14 1/2
F Hickory	20	810	15 1/2
G Hickory	28	16440	78
H Hickory	20	356	33
I Hickory	7	574	8 1/2
J Hickory	14	710	19
K Hickory	10	760	10 1/2
L Hickory	20	770	44
M Hickory	20	850	29
N Hickory	8	223	4 1/2
O Hickory	9	5240	12 1/2
P Hickory	30	721	47

Scale 10 chains to an inch
 Surveyed in December 1837
 By John Farnsworth

The S. 1/4 of the above platted section is divided by Jas Kingley
 the original purchaser into lots of various sizes which are num-
 bered on said Plat from 701 to 6 Geo Conselius Register of Deeds
 Dated Aug 4th 1841

I hereby certify that this Plat is a correct copy of the
 Plat now on Record in the Register of Deeds Office
 being made under the supervision of the Auditor
 General by tracing the Plat on Records and affixing
 thereto a carefully compared copy of the Certificate
 Dated the 11th day of January 1841
 Alton B. Hunt
 Clerk, Aud Gen Dept