

"PANDORA PLATEAU"

A SUBDIVISION OF PART OF THE SE 1/4 OF SEC. 30, T.2 S., R.6 E.,
 CITY OF ANN ARBOR, WASHTENAW COUNTY, MICHIGAN

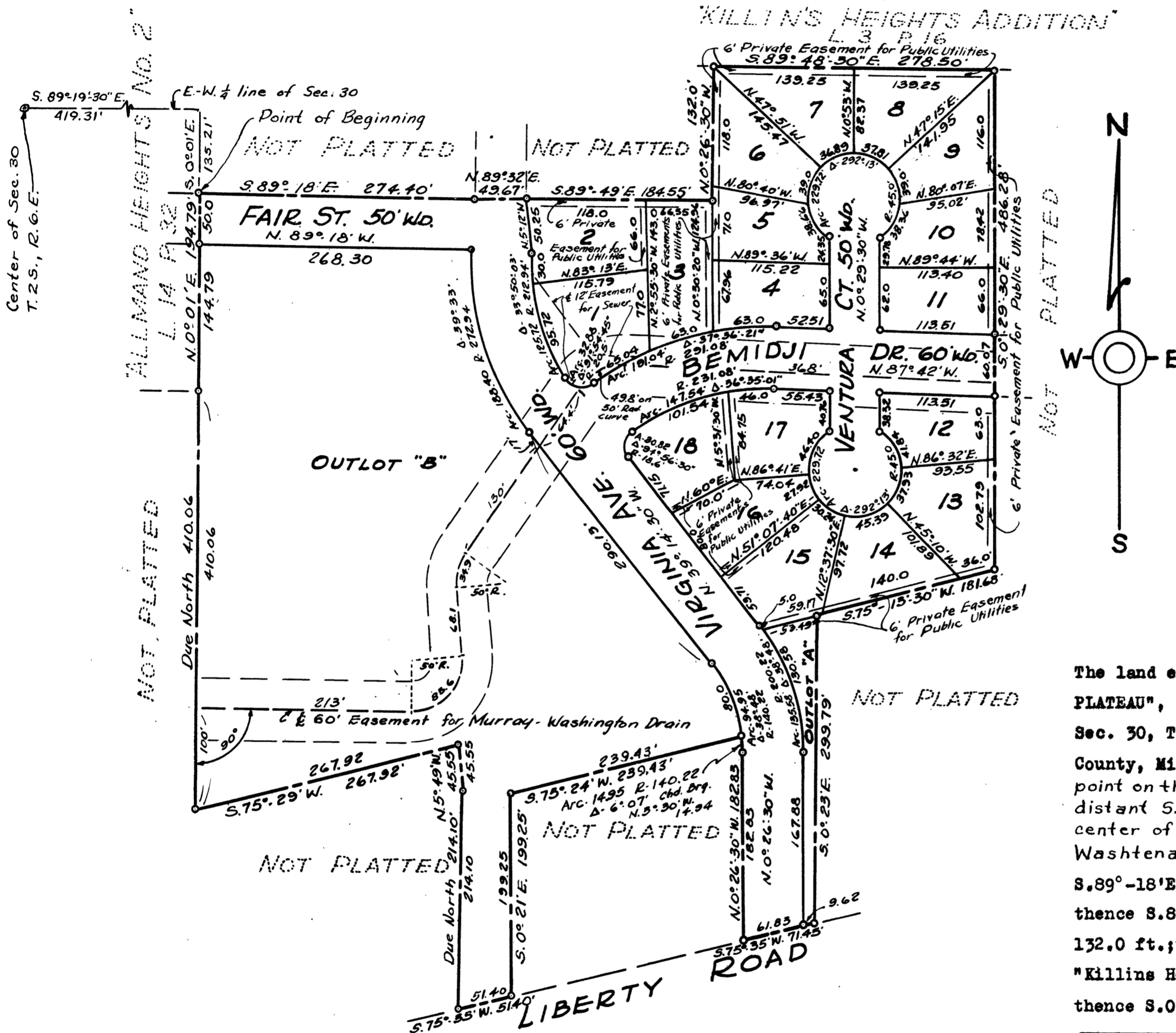
NOTE: All dimensions are shown in feet and decimals thereof.
 All curvilinear dimensions are measured along the arc.

Lots 15 & 16 front on Virginia Ave.

SCALE: 1 INCH = 100 FT.



HERBERT L. MUNZEL
 REG. LAND SURVEYOR & PROFESSIONAL ENGINEER
 326 W. MAIN ST.
 BRIGHTON, MICHIGAN



DESCRIPTION OF LAND PLATTED

The land embraced in the annexed plat of "PANDORA PLATEAU", a subdivision of part of the SE 1/4 of Sec. 30, T.2 S., R.6 E., City of Ann Arbor, Washtenaw County, Michigan, is described as: Beginning at a point on the E. line of "Allmand Heights No. 2", (L. 14 P. 32) distant S. 89°-19'-30" E., 419.31 ft. and S. 0°-01'-13.21 ft. from the center of Sec. 30, T.2 S., R.6 E., City of Ann Arbor Washtenaw County, Michigan; thence S. 89°-18'E., 274.40 ft.; thence N. 89°-32'E., 49.67 ft.; thence S. 89°-49'E., 184.55 ft.; thence N. 0°-26'-30"W., 132.0 ft.; thence S. 89°-48'-30"E. along the S. line of "Killins Heights Addition" (L. 3, P. 16), 278.50 ft.; thence S. 0°-29'-30"E.,

486.28 ft.; thence S. 75°-13'-30"W., 181.68 ft.; thence S. 0°-23'E., 299.79 ft. to the N'ly line of Liberty Rd.; thence S. 75°-35'W. along said N'ly line of Liberty Rd., 71.45 ft.; thence N. 0°-26'-30"W., 182.83 ft. to a point of curve; thence N'ly 14.95 ft. on the arc of a curve concave to the west, radius 140.22 ft., central angle 6°-07', chord bearing N. 3°-30'W., 14.94 ft.; thence S. 75°-24'W., 239.93 ft.; thence S. 0°-21'E., 199.25 ft. to the N'ly line of Liberty Rd.; thence S. 75°-35'W. along said N'ly line of Liberty Rd., 51.40 ft.; thence due North 214.10 ft.; thence N. 5°-49'W., 45.55 ft.; thence S. 75°-29'W., 267.92 ft.; thence due North 410.06 ft.; thence N. 0°-01'E. along the E. line of "Allmand Heights No. 2", 194.79 ft. to the point of beginning, containing Lots 1 through 18 inclusive and Outlots "A" and "B".

SURVEYOR'S CERTIFICATE

I hereby certify that the plat hereon delineated is a correct one, and that permanent monuments consisting of iron rods at least one half inch in diameter and 36 inches in length, encased in concrete cylinders four inches in diameter and 36 inches in length, have been set at all points marked thus (o) as thereon shown at all angles in the boundaries of the land platted, at all intersections of lines of streets and at intersections of the lines of streets with the boundaries of the plat.

Herbert L. Munzel
 Herbert L. Munzel,
 Reg. Land Surveyor
 Reg. Prof. Engineer

"PANDORA PLATEAU"

A SUBDIVISION OF PART OF THE SE 1/4 OF SEC. 30, T.2 S., R.6 E.,
CITY OF ANN ARBOR, WASHTENAW COUNTY, MICHIGAN

DEDICATION

Know all men by these presents, that we, Lilas A. Blakney, ^{a widow} title holder, Frank C. Gross, Jr., and Jutta M. Gross, his wife, land contract purchaser, and the City of Ann Arbor, by Cecil O. Creal, Mayor, and Fred J. Looker, Clerk, title holder, as proprietors, have caused the land embraced in the annexed plat to be surveyed, laid out and platted to be known as "Pandora Plateau", a subdivision of part of the SE 1/4 of Sec. 30, T.2 S., R.6 E., City of Ann Arbor, Washtenaw County, Michigan and that the streets as shown on said plat are hereby dedicated to the use of the public; and that the private easements as shown on said plat are hereby reserved for the use of public utilities or the use of specific utilities as thereon noted, and that no permanent structures are to be erected within the lines of said easements.

Signed in the presence of:

Erwin A. Salisbury
Erwin A. Salisbury

Betty Hawthorn
BETTY HAWORTH

Shirley Brown
Shirley Brown

Dorothy Chandler
Dorothy Chandler

Jean Eskelinen
Jean Eskelinen

Helen I. Clark
Helen I. Clark

Jutta M. Gross
Jutta M. Gross

Lilas A. Blakney
Lilas A. Blakney

Frank C. Gross, Jr.
Frank C. Gross, Jr.

CITY OF ANN ARBOR

By Cecil O. Creal
Cecil O. Creal, Mayor

Fred J. Looker
Fred J. Looker, Clerk

I hereby certify this copy is a true copy of map or plat forwarded the Register of Deeds for recording

Date Sept. 16, 1963

FILED IN AUDITOR GENERAL'S DEPT

Date Sept. 17, 1963

EXAMINED AND APPROVED

Date Sept. 16, 1963

Richard E. Lomax
Richard E. Lomax, Plat Examiner

COPY

Register's Office
Washtenaw County } S. S.

Plat of Pandora Plateau

was Recorded this 16th day of

Sept. A. D., 1963 at 5:05 o'clock

P. M., in Liber 16 of plat

on Page 58+59

Patricia Newkirk Hardy
Register of Deeds
ORIGINAL ON FILE BY
C. R. Sorward, City

HERBERT L. MUNZEL
REG. LAND SURVEYOR & PROFESSIONAL ENGINEER
326 W MAIN ST
BRIGHTON, MICHIGAN

ATTORNEY'S OPINION

I hereby certify from an examination of the title insurance policy to the above described land that there are no rights, including mineral rights, other than in the parties joining in the Dedication.

Erwin A. Salisbury
Erwin A. Salisbury
Dated the 17th day
of April 1963

APPROVAL BY COUNTY PLAT BOARD

This plat was approved on the 29th day of August 1963 by the Washtenaw County Plat Board.

Patricia Newkirk Hardy
Patricia Newkirk Hardy
County Register of Deeds

John Flock, Drain Commissioner

J. Martin Rempp
J. Martin Rempp, Auditor

Herbert G. Loeffler
Herbert G. Loeffler, Auditor

John P. Cook
John P. Cook, Auditor

ACKNOWLEDGEMENT

STATE OF MICHIGAN) ss.
COUNTY OF Kalamazoo

On this 8 day of April, 1963 before me, a Notary Public in and for said County personally came the above named Lilas A. Blakney and Frank C. Gross, Jr., known to me to be the persons who executed the above Dedication, and acknowledged the same to be their free act and deed.

Trella V. Miller
Trella V. Miller
Notary Public Kalamazoo
County

My commission expires _____

ACKNOWLEDGEMENT

STATE OF MICHIGAN) ss.
COUNTY OF WASHTENAW

On this 22nd day of May 1963 before me, a Notary Public in and for said County appeared Cecil O. Creal and Fred J. Looker, who being each by me duly sworn did say that they are respectively Mayor and Clerk of the CITY OF ANN ARBOR, a Michigan Municipal Corporation and that the seal affixed to said plat is the corporate seal of said corporation and that the instrument was signed and sealed in behalf of said corporation by authority of the City Council as the free act and deed of said corporation.

Oma L. Turner
OMA L. TURNER
Notary Public, Washtenaw Co.

My commission expires JAN. 14, 1965

ACKNOWLEDGEMENT

STATE OF MICHIGAN) ss.
COUNTY OF WASHTENAW

On this 13th day of June, 1963 before me, a Notary Public in and for said County personally came the above named Jutta M. Gross, known to me to be the person who executed the above Dedication, and acknowledged the same to be her free act and deed.

Erwin A. Salisbury
ERWIN A. SALISBURY
Notary Public Washtenaw County

My commission expires Sept. 19, 1965

CITY CLERK'S CERTIFICATE

I hereby certify that the City of Ann Arbor has accepted adequate security to insure the installation of ^{public sewer} and ^{water} within the plat

Fred J. Looker
Fred J. Looker, Clerk

CERTIFICATE OF APPROVAL BY THE CITY PLANNING COMMISSION

This plat was approved by the Planning Commission of the City of Ann Arbor, Michigan at a meeting held on the 14th day of MAY 1963.

Richard A. Ware
RICHARD A. WARE Chairman
Joseph W. Edwards
JOSEPH W. EDWARDS Secretary

MUNICIPAL APPROVAL

This plat was approved by the Common Council of the City of Ann Arbor at a meeting held on August 29, 1963.

Fred J. Looker
Fred J. Looker Clerk

CITY CLERK'S CERTIFICATE

I hereby certify that the width and depth of lots shown on this plat conform with the rules and regulations of the city of Ann Arbor and the requirements of Section 30, Act 172, P.A. 1929, as amended by Act 186, P.A. 1954, and that this plat conforms to the provisions of Act 19A, as amended by Act 150, P.A. 1961.

Fred J. Looker
Fred J. Looker Clerk

COUNTY TREASURER'S CERTIFICATE

Office of County Treasurer
Washtenaw County, Michigan

I hereby certify that there are no tax liens or titles held by the state on the lands described hereon and that there are no tax liens or titles held by individuals on said lands for five years preceding the 22 day of April 1963 and that the taxes for said period of five years are paid, as shown by the records of this office. This certificate does not apply to taxes, if any, now in process of collection by Township, City or Village collecting officers.

Sylvester A. Leonard
Sylvester A. Leonard, County Treasurer

CERTIFICATE OF APPROVAL BY THE CITY PLANNING COMMISSION
This plat was approved by the Planning Commission of the City of Ann Arbor, Michigan at a meeting held the 23rd day of JULY 1963

Richard A. Ware
Richard A. Ware, Chairman
Robert V. Galbreath
Robert V. Galbreath, Secretary

MUNICIPAL REAPPROVAL

This plat was approved by the Common Council of the City of Ann Arbor at a meeting held on July 29, 1963

Fred J. Looker
Fred J. Looker, Clerk