

# Oxford Terrace.

A Re-subdivision of a Part of  
Woodside Plat.  
Ann Arbor, Mich.  
1906.

Scale 1"=100'

### Surveyor's Certificate.

I hereby certify that the plat herein delineated is a correct one and that permanent monuments consisting of iron and stone have been planted at points marked thus  $\circ$  as thereon shown at all angles in the boundaries of the land platted, and at all intersections of streets, or streets and alleys.  
Ross Granger,  
Surveyor.

### Certificate of Approval by the Board of Public Works.

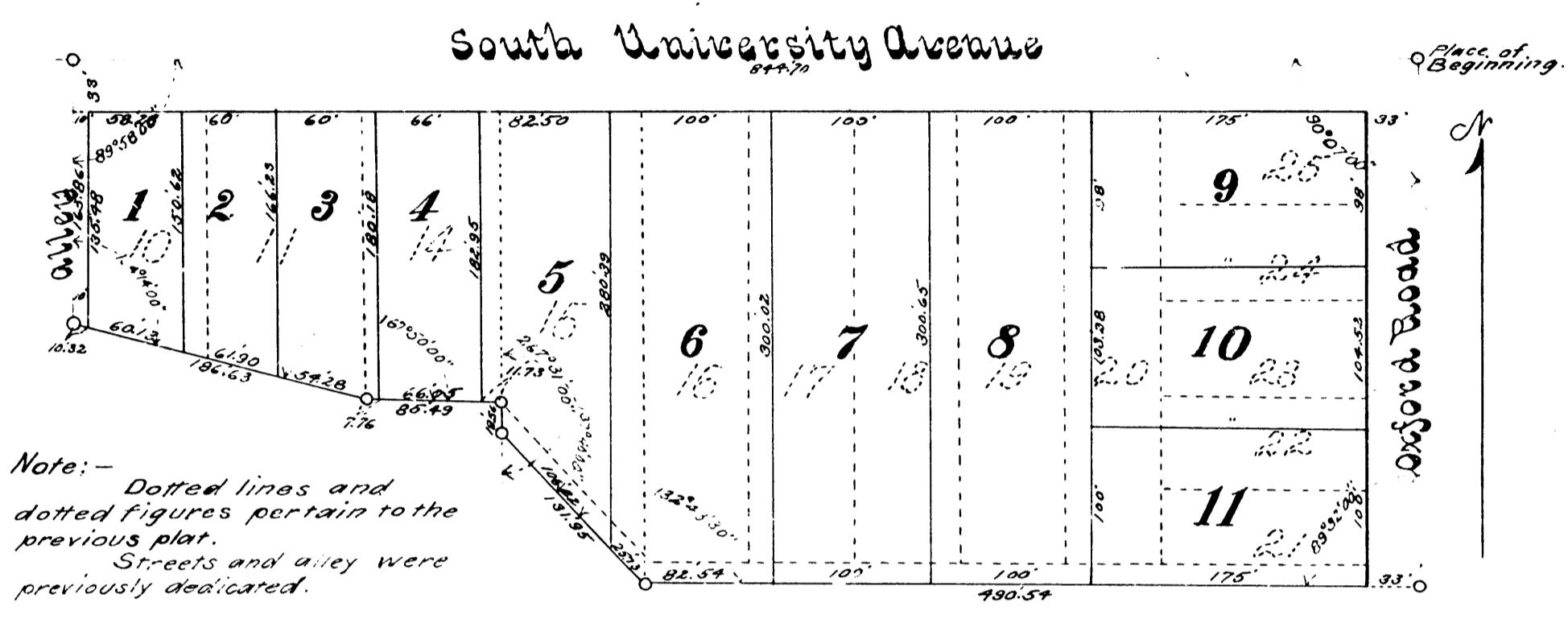
This plat was examined and approved at a regular meeting of the Board of Public Works of the City of Ann Arbor, the nineteenth day of December, 1906.  
Ross Granger,  
Clerk.

### Tax Certificate.

County Treasurer's Office  
Washtenaw County, Mich.  
Ann Arbor, Mich. Dec. 12<sup>th</sup>, 1906.  
It is hereby certified, that the following statement shows the Condition of Lands described below in the County of Washtenaw, so far as relates to the State and County Taxes prior to the 12<sup>th</sup> day of October 1906, to-wit:-  
Lots 10, 11, 14, 15, 16, 17, 18, 19, 20, 21, 22, 23, 24 and 25 Woodside Plat, City of Ann Arbor, as appears by the records of this office.  
Not any  
rate delinquent taxes, if any, during five years prior to date of Plat.  
Otto D. Luick,  
County Treasurer.

### Examined and Approved.

December 22, 1906.  
John F. Wilkinson,  
Deputy Auditor General.



Note:- Dotted lines and dotted figures pertain to the previous plat. Streets and alley were previously dedicated.

### Description of Land Platted.

The land embraced in the <sup>annexed</sup> plat of Oxford Terrace is described as follows:-  
Beginning at an iron pipe monument at the intersection of South University Ave. and Oxford Road.  
Thence S<sup>1</sup>/<sub>2</sub> along the center line of Oxford Road 335.60 to an iron pipe monument.  
Thence, deflecting 90°28'00" to the right, 490.57 to an iron pipe monument.  
Thence, deflecting 47°16'30" to the right, 131.95 to an iron pipe monument.  
Thence, deflecting 13°20'00" to the right, 18.56 to an iron pipe monument.  
Thence, deflecting 7°31'00" to the left, 85.49 to an iron pipe monument.  
Thence, deflecting 12°10'00" to the right, 186.63 to an iron pipe monument in the center of the alley.  
Thence, deflecting 75°46'00" to the right, 165.86 to an iron pipe monument at the intersection of the center line of the alley with the center line of South University Ave.  
Thence, deflecting 90°02'00" to the right, 844.70 to the place of beginning, all lying in the City of Ann Arbor, Michigan.

### Certificate of Record.

Register's Office } ss.  
Washtenaw Co. }  
Received for Record this 11<sup>th</sup> day of January, 1907, at 11 o'clock A.M. and Recorded in Liber 2 of Plats, on Page 26.  
J. B. Merrick,  
Register.

### Proprietor's Certificate.

Know all men by these presents, that I, Mrs Julia B. Coon, as proprietress, have caused the land embraced in the annexed plat to be surveyed, laid out and platted, to be known as Oxford Terrace.  
Signed and sealed in the presence of

Henry W. Zahn  
Emmett Coon  
Julia B. Coon. [L.S.]

### Acknowledgement.

State of Michigan } ss.  
County of Washtenaw }  
On this Fifth day of Dec. 1906, before me, a Notary Public in and for said county, personally came the above named Julia B. Coon known to me to be the person who made the above certificate and acknowledged the same to be her free act and deed.  
Emmett Coon,  
Notary Public, Washtenaw Co., Mich.  
My Commission expires June 9, 1907.

### Certificate of Comparison With the Original.

We, John Lawson, Register of Deeds for Washtenaw Co. and H. B. Merrick, of Ann Arbor, Surveyor, hereby certify that we have each carefully compared the annexed plat of Oxford Terrace with the original, and that it is a correct copy thereof and of the whole of such map or plat.  
John Lawson,  
Register of Deeds.  
H. B. Merrick,  
Surveyor.