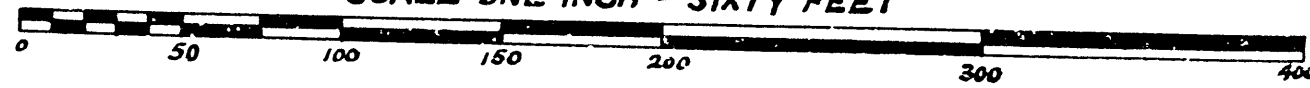


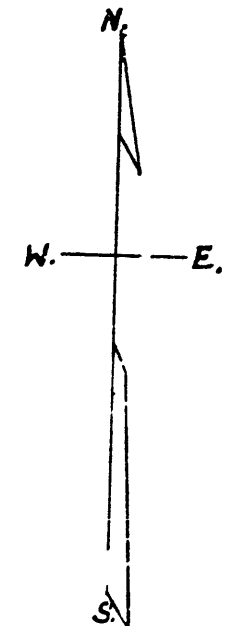
"OAK CREST NUMBER ONE"

A SUBDIVISION OF
A PART OF THE NORTHWEST QUARTER,
SECTION 32, TOWN TWO SOUTH, RANGE SIX EAST
IN THE CITY OF ANN ARBOR, WASHTENAW COUNTY, MICHIGAN.

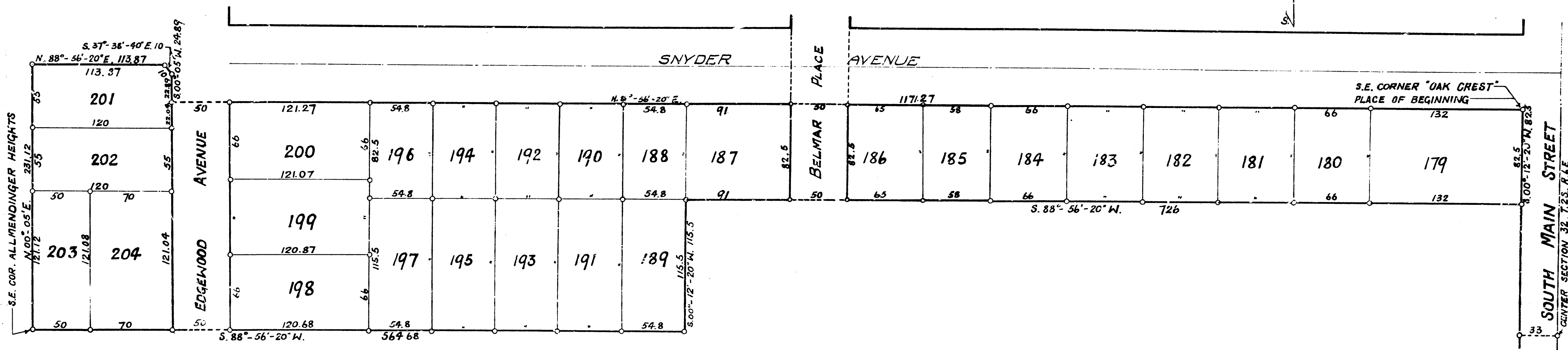
SCALE - ONE INCH = SIXTY FEET



REGISTER OF DEEDS
Washtenaw County
31st
August
A. D. 1925
7:30 P. M. and returned
L. S. 6
John A. Hammon
Deputy



26
Aug 26-1925
J. L. Here



DEDICATION.

KNOW ALL MEN BY THESE PRESENTS, That we Albert C. Doster and Bessie P. Doster his wife, as proprietors, have caused the land embraced in the annexed plat to be surveyed, laid out and platted to be known as "OAK CREST NUMBER ONE", a subdivision of a part of the northwest quarter, Section 32, Town Two South, Range Six East, in the City of Ann Arbor, Washtenaw County, Michigan, and that the streets as shown on said plat are hereby dedicated to the use of the public.

SIGNED AND SEALED IN PRESENCE OF:
 Guyman J. Ballard } Albert C. Doster (LS)
 George O. White } Bessie P. Doster (LS)

STATE OF MICHIGAN }
 COUNTY OF WASHTENAW } SS
 On this 24th day of July, 1925, before me a Notary Public in and for said County, personally came the above named Albert C. Doster and Bessie P. Doster his wife known to me to be the persons who executed the above dedication, and acknowledged the same to be their free act and deed.
 Guyman J. Ballard
 Notary Public, Washtenaw County, Michigan.
 My commission expires April 2, 1926.

**CERTIFICATE OF APPROVAL
BY THE BOARD OF COUNTY AUDITORS**

Approved by the Board of County Auditors of Washtenaw County, Michigan, this 22nd day of August, 1925.
 Walter M. Fowler
 S. A. Hammon, Chairman
 Edwin L. Brown

**CERTIFICATE OF APPROVAL
BY THE BOARD OF PUBLIC WORKS.**

This plat was approved by the Board of Public Works of the City of Ann Arbor, Washtenaw County, Michigan, at a meeting held July 8, 1925.
 J. G. Reynolds
 Clerk

**CERTIFICATE OF APPROVAL
BY THE COMMON COUNCIL.**

This plat was approved by the Common Council of the City of Ann Arbor, Washtenaw County, Michigan, at a meeting held August 17, 1925.
 J. G. Reynolds
 Clerk

TAX CERTIFICATE

OFFICE OF THE COUNTY TREASURER, WASHTENAW COUNTY, MICHIGAN.
 I hereby certify That, there are no tax liens or titles held by the state on the lands described here and that there are no tax liens or titles held by individuals on said lands, for the five years preceding the 7th day of July, 1925 and that the taxes for said period of five years are fully paid, as shown by the records of this office.
 Mary E. Blum
 Co. Treasurer.

DESCRIPTION.

The land embraced in the annexed plat of "OAK CREST NUMBER ONE", a subdivision of a part of the northwest quarter, Section 32, Town Two South, Range Six East in the City of Ann Arbor, Washtenaw County, Michigan, is described as follows: Commencing at the southeast corner of "OAK CREST", a subdivision of a part of the northwest quarter, Section 32, Town Two South, Range Six East, in the City of Ann Arbor, Washtenaw County, Michigan; thence south 0 degree, 12 minutes, 20 seconds west along the west line of Main Street 82.5 feet; thence south 82 degrees, 55 minutes, 20 seconds west, 726 feet; thence south 0 degree, 12 minutes, 20 seconds west 115.5 feet; thence south 88 degrees 13 minutes 20 seconds west 84.58 feet to the southeast corner of "ALLEY/DINGER HEIGHTS"; thence north 0 degree 45 minutes east along the east line of "ALLEY/DINGER HEIGHTS" 231.12 feet to the southwest corner of "OAK CREST"; thence north 88 degrees 50 minutes 20 seconds east along the south line of "OAK CREST" 113.87 feet; thence south 87 degrees 30 minutes, 15 seconds east along the south line of "OAK CREST" 10 feet; thence south 0 degree, 05 minutes, west along the south line of "OAK CREST" 84.88 feet; thence north 82 degrees, 55 minutes, 20 seconds east along the south line of "OAK CREST" 1171.27 feet to the place of beginning.

SURVEYOR'S CERTIFICATE.

I hereby certify that the plat hereon delineated is a correct one, and that permanent monuments, consisting of iron pipes one half inch or more in diameter and twenty inches or more in length have been planted at points marked c, as thereon shown at all angles in the boundaries of the land platted and at all intersections of streets.
 H. H. Ottwell
 Registered Civil Engineer.

Note: All dimensions are given in feet and decimals thereof.

1 OF 1
 52/17/25/80
 22/17/25
 OAK CREST NUMBER ONE
 1515001