

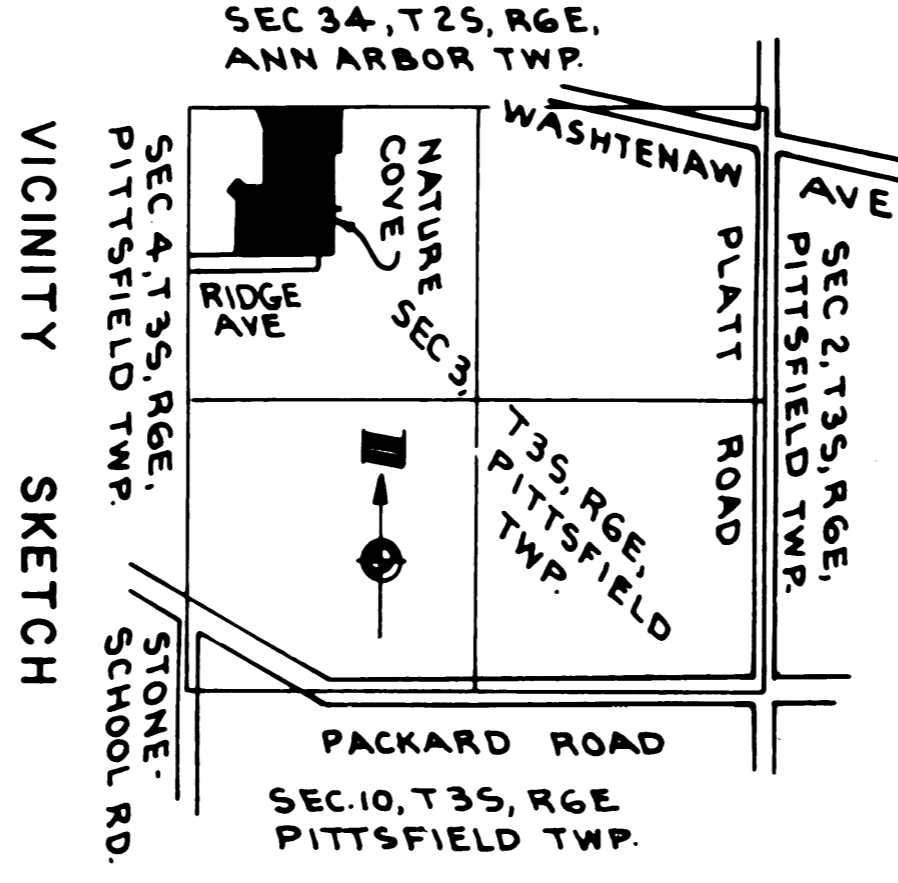
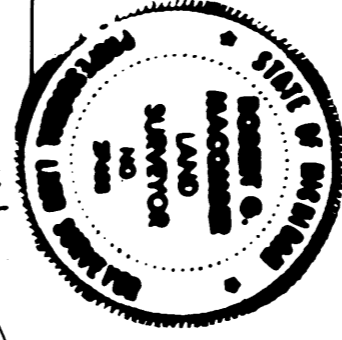
NATURE COVE

A SUBDIVISION OF PART OF THE NW 1/4 OF SECTION 3, T35, R6E
 CITY OF ANN ARBOR, WASHTENAW COUNTY, MICHIGAN



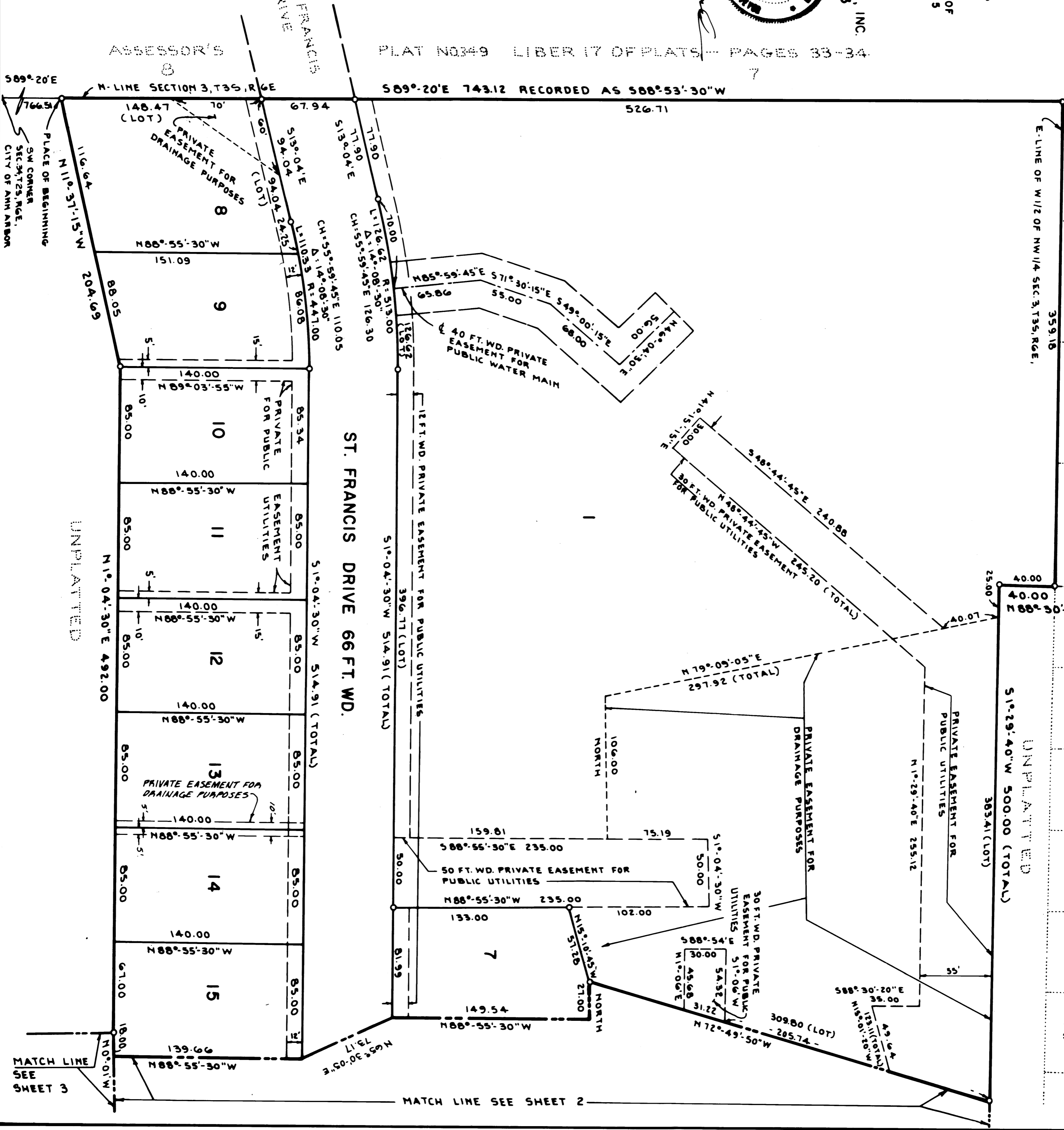
ALL DIMENSIONS IN FEET. (R) INDICATES RADIAL
 ALL DIMENSIONS ON CURVES ARE ARC LENGTHS
 CONCRETE MONUMENTS SET AT POINTS MARKED "O"
 3/4" X 1/8" IRON PIPE SET AT EACH LOT CORNER
 BEARINGS ARE RELATED TO THE EASTERLY LINE OF
 "DRAPATZ SECOND ADDITION," RECORDED IN LIBER 15
 OF PLATS, PAGE 24, WASHTENAW COUNTY RECORDS

PREPARED AND DRAFTED BY ATWELL-HICKS, INC.
 1241 SOUTH MAPLERD, ANN ARBOR, MI. 48103



PLAT NO. 349 LIBER 17 OF PLATS - PAGES 33-34

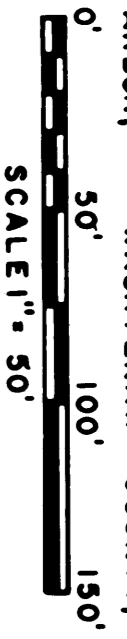
ANN ARBOR WOODS LIBER 12 OF PLATS - PAGES 38-39	3	4	5	6
ANN ARBOR WOODS NO. 2 LIBER 12 OF PLATS - PAGES 40-41	38	39	40	41
	42	43		



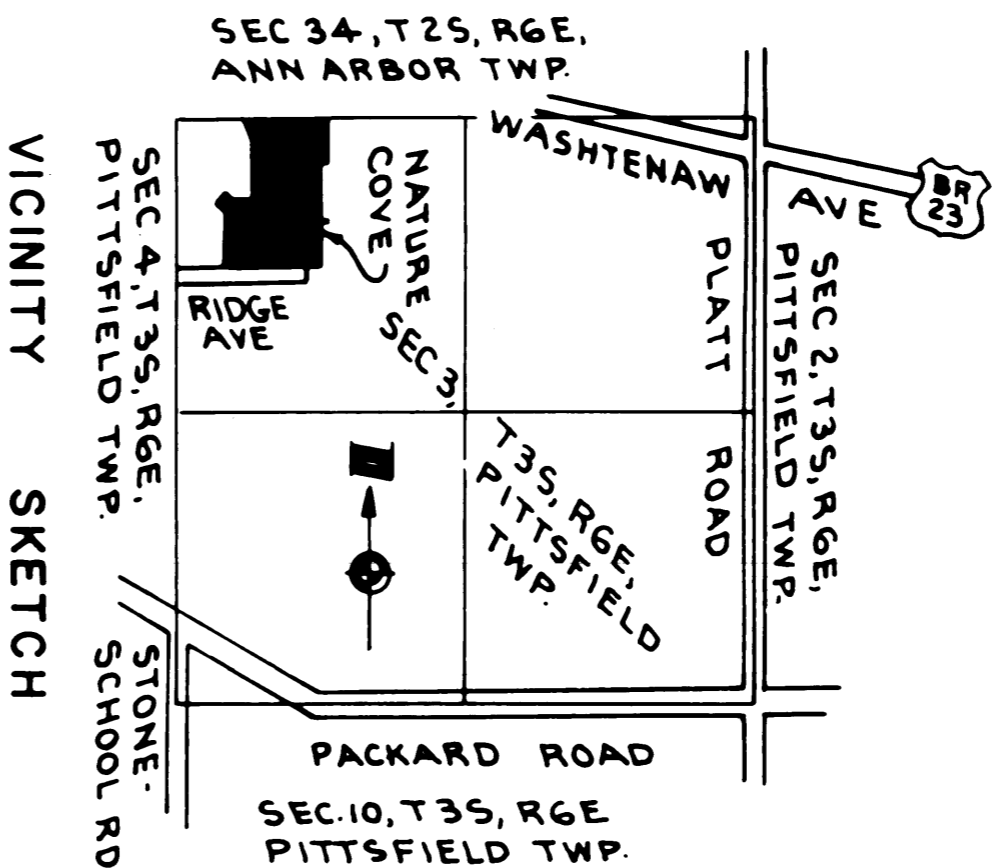
This plat is subject to restrictions as required by Act 286 of 1967, as amended and certain 1063 W.P.S. subject to the requirements of the Michigan Department of Natural Resources and/or the Michigan Department of Public Health which are recorded in Liber 1998, Page 847-852 of records of this county.

NATURE COVE

A SUBDIVISION OF PART OF THE NW 1/4 OF SECTION 3, T35, R6E
 CITY OF ANN ARBOR, WASHTENAW COUNTY, MICHIGAN

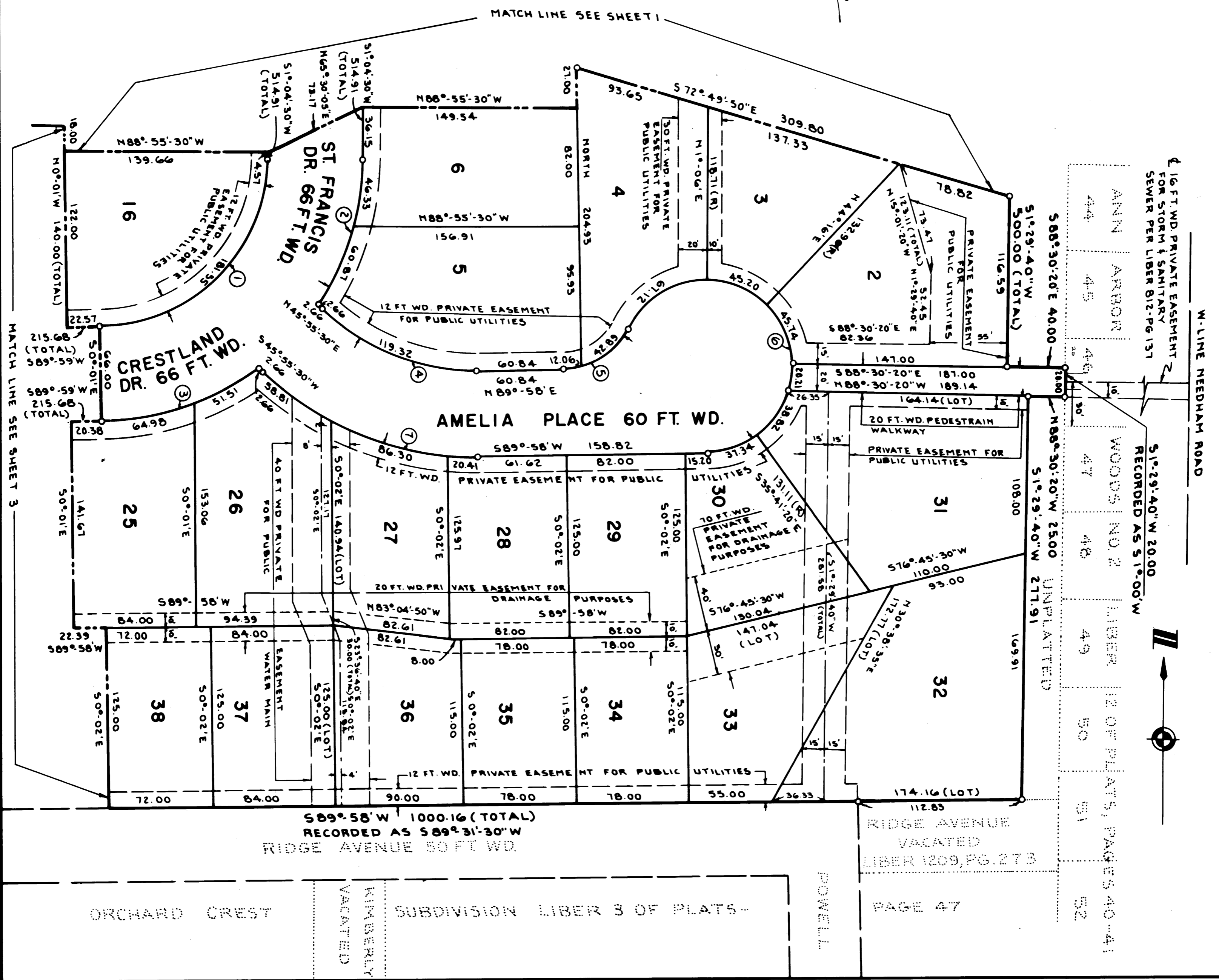


ALL DIMENSIONS IN FEET. (R) INDICATES RADIAL
 ALL DIMENSIONS ON CURVES ARE ARC LENGTHS
 CONCRETE MONUMENTS SET AT POINTS MARKED "O"
 3/4" X 18" IRON PIPE SET AT EACH LOT CORNER
 BEARINGS ARE RELATED TO THE EASTERLY LINE OF
 "DRAPATZ SECOND ADDITION," RECORDED IN LIBER 15
 OF PLATS, PAGE 24, WASHTENAW COUNTY RECORDS



PREPARED AND DRAFTED BY ATWELL-HICKS, INC.
 1241 SOUTH MAPLERD, ANN ARBOR, MI. 48103

CURVE DATA				
Curve No.	Radius	Arc Length	Delta	Chord
1	117.00	181.55	88°-54'-30"	S 45°-31'-45" W 163.88
2	183.00	107.20	33°-33'-55"	S 17°-51'-25" W 105.68
3	183.00	116.49	36°-28'-25"	S 71°-44'-50" W 114.54
4	155.00	119.32	44°-06'-30"	S 67°-58'-45" E 116.40
5	50.00	54.95	62°-57'-50"	N 58°-29'-05" E 52.22
6	60.00	254.43	242°-57'-50"	S 31°-30'-55" E 102.34
7	215.00	165.51	44°-06'-30"	N 67°-58'-45" W 161.46



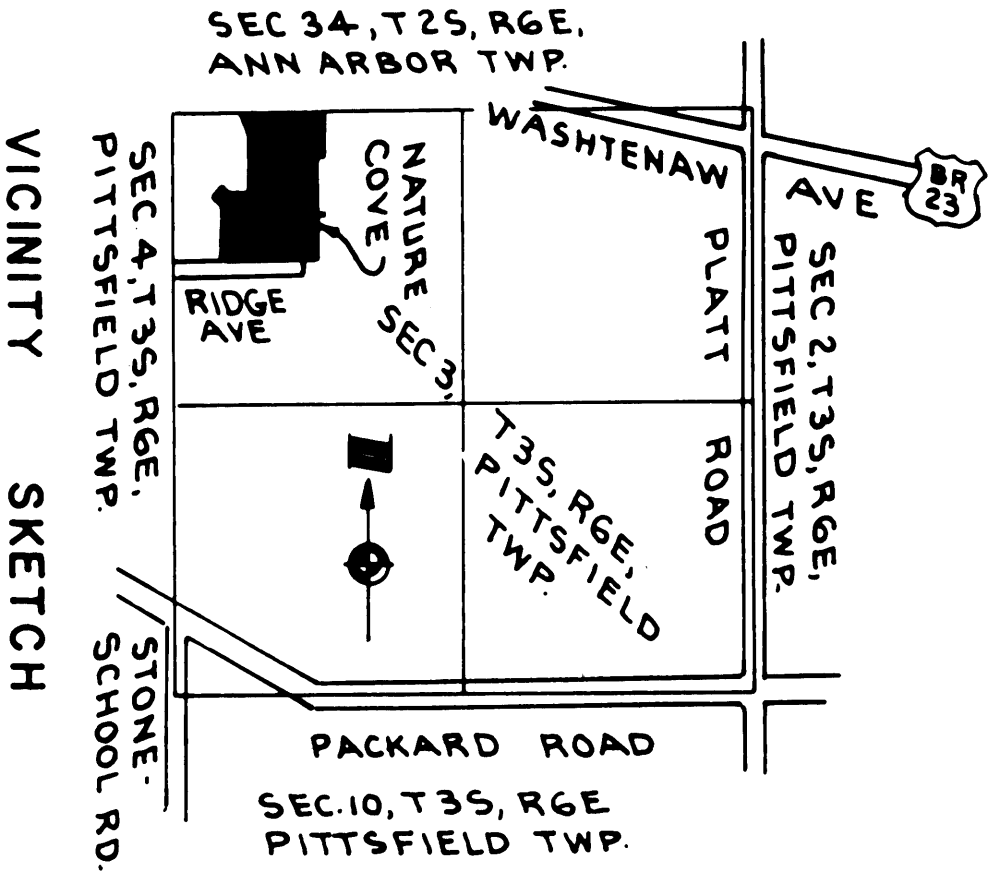
3-F-645-2 SHEET 2 OF 4

NATURE COVE

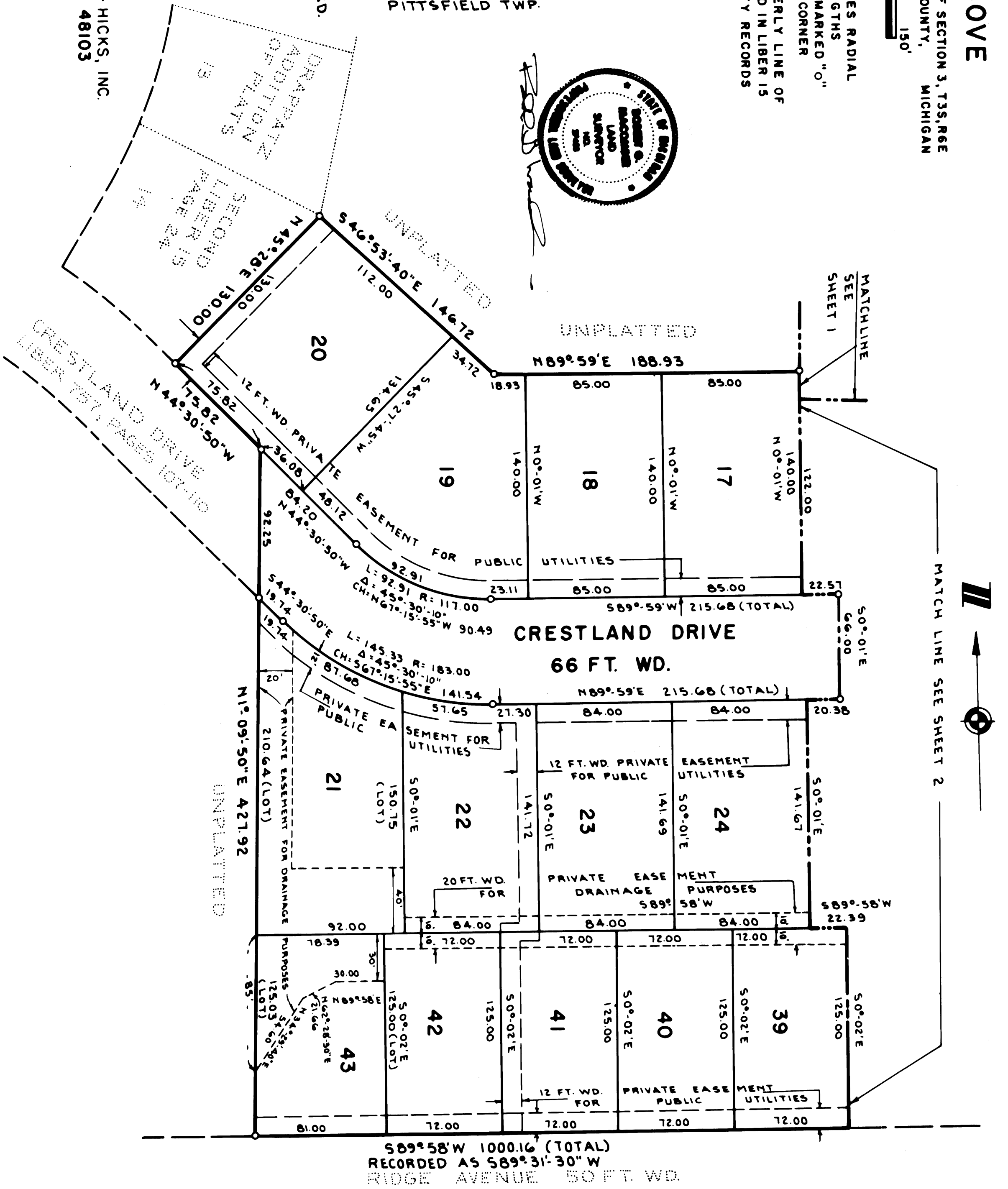
A SUBDIVISION OF PART OF THE NW 1/4 OF SECTION 3, T35, R6E
 CITY OF ANN ARBOR, WASHTEENAW COUNTY, MICHIGAN



ALL DIMENSIONS IN FEET. (R) INDICATES RADIAL
 ALL DIMENSIONS ON CURVES ARE ARC LENGTHS
 CONCRETE MONUMENTS SET AT POINTS MARKED "O"
 3/4" X 18" IRON PIPE SET AT EACH LOT CORNER
 BEARINGS ARE RELATED TO THE EASTERLY LINE OF
 "DRAPPATZ SECOND ADDITION," RECORDED IN LIBER 15
 OF PLATS, PAGE 24, WASHTEENAW COUNTY RECORDS



PREPARED AND DRAFTED BY ATWELL-HICKS, INC.
 1241 SOUTH MAPLE RD., ANN ARBOR, MI. 48103



ORCHARD CREST
 LIBER 3 OF PLATS

SUBDIVISION
 PAGE 47

NATURE COVE

A SUBDIVISION OF PART OF THE NW 1/4 OF SECTION 3, T3S, R6E
CITY OF ANN ARBOR, WASHTENAW COUNTY, MICHIGAN

SURVEYOR'S CERTIFICATE

I, Robert G. Macomber, surveyor, certify:

That I have surveyed, divided and mapped the land shown on this plat described as follows: Nature Cove, a subdivision of part of the NW 1/4 of Section 3, T3S, R6E, City of Ann Arbor, Washtenaw County, Michigan. Commencing at the SW corner of Section 3, T3S, R6E, City of Ann Arbor, Washtenaw County, Michigan; thence S 89°-20' E 766.51 feet along the north line of said Section 3 and south line of Assessor's Plat No. 49 (recorded as S 88°-53'-30" W) as recorded in Liber 17 of Plats, Pages 33 and 34, Washtenaw County records for a PLACE OF BEGINNING; thence continuing along said north line of Section 3 and south line of Assessor's Plat No. 49 S 89°-20' E 743.12 feet; thence S 1°-29'-40" W 359.18 feet along the west line of Ann Arbor Woods (recorded as S 1°-00' W) as recorded in Liber 12 of Plats, Pages 38 and 39, Washtenaw County records; thence N 88°-30'-20" W 40.00 feet; thence S 1°-29'-40" W 500.00 feet; thence S 88°-30'-20" E 40.00 feet; thence S 1°-29'-40" W 20.00 feet along the west line of Ann Arbor Woods No. 2 (recorded as S 1°-00' W) as recorded in Liber 12 of Plats, Pages 40 and 41, Washtenaw County Records; thence N 88°-30'-20" W 25.00 feet; thence S 1°-29'-40" W 277.91 feet; thence S 89°-58' W 1000.16 feet along the north line of Orchard Crest Subdivision (recorded as S 89°-31'-30" W) as recorded in Liber 3 of Plats, Page 47, Washtenaw County Records; thence N 1°-09'-50" E 427.92 feet; thence N 44°-30'-50" W 75.82 feet; thence N 45°-28' E 130.00 feet along the east line of Drappatz Second Addition as recorded in Liber 15 of Plats, Page 24, Washtenaw County Records; thence S 46°-53'-40" E 146.72 feet; thence N 89°-59' E 188.93 feet; thence N 1°-04'-30" E 492.00 feet; thence N 11°-37'-15" W 204.69 feet to the Place of Beginning, containing 43 lots, numbered 1 through 43 inclusive, containing 21.87 acres of land more or less.

That I have made such survey, land-division and plat by the direction of the owners of such land.

That such plat is a correct representation of all the exterior boundaries of the land surveyed and the subdivision of it.

That the required monuments and lot markers have been located in the ground or that surety has been deposited with the municipality, as required by Section 125 of the Act.

That the accuracy of survey is within the limits required by Section 126 of the Act.

That the bearings shown on the plat are expressed as required by Section 126 (3) of the Act and as explained in the legend.

2/22/85

ATWELL-HICKS, INC.



Robert G. Macomber
Robert G. Macomber, Treasurer
Land Surveyor No. 27453
1241 S. Maple
Ann Arbor, Michigan 48103

CERTIFIED TRUE COPY OF
RECORDED PLAT
BY DEPARTMENT OF COMMERCE

By *Richard E. Loinax*
Richard E. Loinax, I.S.
Manager Plat Section

Date *Sept. 16, 1985*

PROPRIETOR'S CERTIFICATE - CORPORATION

Guenther Building Company, a Corporation duly organized and existing under the laws of the State of Michigan by Robert F. Guenther, President and Sandra R. Guenther, Secretary as proprietor, has caused the land to be surveyed, divided, mapped and dedicated as represented on this plat and that the streets and walkway are for the use of the public; that the public utility easements are private easements and that all other easements are for the uses shown on the plat.

Witnesses:

Frances A. Corona
Frances A. Corona
V. June Roberts
V. June Roberts

Guenther Building Company
2864 Carpenter Road
Ann Arbor, Michigan 48104
Robert F. Guenther
Robert F. Guenther, President
Sandra R. Guenther
Sandra R. Guenther, Secretary

ACKNOWLEDGEMENT - CORPORATION

STATE OF MICHIGAN)
County of Washtenaw) ss.

Personally came before me this *27th* day of *February*, 1985, Robert F. Guenther, President and Sandra R. Guenther, Secretary of the above named Corporation, to me known to be the persons who executed the foregoing instrument, and to me known to be such President and Secretary of said Corporation, and acknowledged that they executed the foregoing instrument as such officers as the free act and deed of said Corporation by its authority.

Frances A. Corona
Frances A. Corona
Notary Public
Washtenaw County, Michigan
My Commission Expires:
February 18, 1987

PROPRIETOR'S CERTIFICATE - CORPORATION

Nature Cove Condominium Association, a Michigan non-profit Corporation duly organized and existing under the laws of the State of Michigan by Maxwell G. Sweet, President and Linda B. Lipnik, Secretary as proprietor, has caused the land to be surveyed, divided, mapped and dedicated as represented on this plat and that the streets and walkway are for the use of the public; that the public utility easements are private easements and that all other easements are for the uses shown on the plat.

Witnesses:

Lenora M. Lueb
Lenora M. Lueb

Nature Cove Condominium Association
2115 Nature Cove Court
Ann Arbor, Michigan 48104
Maxwell G. Sweet
Maxwell G. Sweet, President

Frances A. Corona
Frances A. Corona

Linda B. Lipnik
Linda B. Lipnik, Secretary

ACKNOWLEDGEMENT - CORPORATION

STATE OF MICHIGAN)
County of Washtenaw) ss.

Personally came before me this *1st* day of *March*, 1985, Maxwell G. Sweet, President and Linda B. Lipnik, Secretary of the above named Corporation, to me known to be the persons who executed the foregoing instrument, and to me known to be such President and Secretary of said Corporation, and acknowledged that they executed the foregoing instrument as such officers as the free act and deed of said Corporation by its authority.

Frances A. Corona
Frances A. Corona
Notary Public
Washtenaw County, Michigan
My Commission Expires:
February 18, 1987

COUNTY TREASURER'S CERTIFICATE

The records in my office show no unpaid taxes or special assessments for the five years preceding *March 14, 1985* involving the lands included in this plat.

Michael A. Stimpson
Michael A. Stimpson, Treasurer
Washtenaw County, Michigan

COUNTY DRAIN COMMISSIONER'S CERTIFICATE

Approved on *18 March 1985* as complying with Section 192 of Act 288, P.A. 1967, and the applicable rules and regulations published by my office in the County of Washtenaw.

James E. Murray
James E. Murray
Drain Commissioner

CERTIFICATE OF MUNICIPAL APPROVAL

I certify that this plat was approved by City Council of the City of Ann Arbor, at a meeting held *April 15, 1985* and was reviewed and found to be in compliance with Act 288, P.A. of 1967, and that proper surety has been posted with the City of Ann Arbor to insure the construction of the public sewers and public water system prior to *April 15, 1986*, and the City does have the proper adopted zoning and subdivision control ordinance with reference to Section 145(4) and 186 of P.A. 288, which waives minimum lot size requirements. Proper surety has been posted with the City of Ann Arbor to insure the placement of monuments and lot corners prior to *April 15, 1986*.

W. Northcross
W. Northcross, City Clerk

COUNTY PLAT BOARD CERTIFICATE

This plat has been reviewed and is approved by the Washtenaw County Plat Board on *May 23, 1985* as being in compliance with all of the provisions of Act 288, P.A. 1967, and the Plat Board's applicable rules and regulations.

Meri Lou Murray
Meri Lou Murray, Chair, Plat Board
Washtenaw County Board of Commissioners

Robert M. Harrison
Robert M. Harrison, County Clerk,
Register of Deeds

Michael A. Stimpson, County Treasurer

RECORDING CERTIFICATE

STATE OF MICHIGAN)
County of Washtenaw) ss.

This plat was received for record on the *12th* day of *August*, 1985, A.D. at *11:50 AM.*, and recorded in Liber *24* of Plats on page(s) *56, 57, 58 + 59.*

Robert M. Harrison
Robert M. Harrison,
Register of Deeds