

DEDICATION

KNOW ALL MEN BY THESE PRESENTS, that we McMullen Building Inc.

a MICHIGAN corporation by John R. McMullen  
 President, and Pauline L. McMullen  
 Secretary as proprietor, have caused the land embraced in the annexed plat  
 to be surveyed, laid out and platted to be known as McMullen's Re-Survey  
 IN THE S.E. 1/4 OF SEC. 28, T2S, R6E  
 of Lots Number 5 and 6 and Part of Lots Number 1, 2, 3,  
 and 4 of Block Number 6 of Baldwin's Eastern Addition  
 and Part of Lot Number 1 of Assessor's Plat Number  
 18 in the City of Ann Arbor, Washtenaw County, Michigan

and that the streets and alleys as shown on said plat are hereby dedicated to  
 the use of the Public.

Signed and Sealed in  
 the Presence of:  
 Clara M. Salles (Witness)  
 Clara M. Salles (Witness)  
 Joyce V. Rogers (Witness)  
 McMULLEN BUILDING INC.  
 John R. McMullen (President)  
 Pauline L. McMullen (Secretary)

ACKNOWLEDGMENT  
 STATE OF Michigan }  
 County of Washtenaw } ss.  
 On this 23rd day of October A.D. 1951, before  
 me Clara M. Salles a Notary Public in and for  
 said county appeared  
 John R. McMullen and Pauline L. McMullen  
 to me personally known, who being each by me duly sworn did say that they are the  
 President and Secretary respectively of the McMullen Building  
 Inc. a Michigan corporation,  
 and that the seal affixed to said instrument is the corporate seal of said corporation and  
 that said instrument was signed and sealed in behalf of said corporation by authority  
 of its Board of Directors and the said John R. McMullen, President;  
 and Pauline L. McMullen, Secretary acknowledged said  
 instrument to be the free act and deed of said corporation.  
 Clara M. Salles Clara M. Salles  
 Notary Public Washtenaw County  
 My Commission expires February 1952

COUNTY TREASURER'S CERTIFICATE  
 Office of County Treasurer, Washtenaw County.  
 I hereby certify, that there are no tax liens or titles held by the State on the lands de-  
 scribed hereon, and that there are no tax liens or titles held by individuals on said lands,  
 for the five years preceding the 23rd day of  
 October 1951, and that the taxes for said period of  
 five years are all paid, as shown by the records of this office.  
 This certificate does not apply to taxes, if any, now in process of collection by township,  
 city or village collecting officers.  
 W. F. Verner (County Treasurer)

I HEREBY CERTIFY THAT THIS COPY IS  
 A TRUE COPY OF THE MAP OR PLAT  
 FROM THE ORIGINAL RECORD OF DEEDS

January 4, 1952  
 Mayme Jewell Furd Deputy Auditor General

FILED IN AUDITOR GENERAL'S DEPT.  
 January 8, 1952  
 Mayme Jewell Furd Deputy Auditor General

Examined and Approved  
 January 4, 1952  
 Mayme Jewell Furd Deputy Auditor General

DESCRIPTION OF LAND PLATTED

The land embraced in the annexed plat of McMullen's Re-Survey  
 IN THE S.E. 1/4 OF SEC. 28, T2S, R6E OF  
 Lots Number 5 and 6 and Part of Lots Number 1, 2, 3, &  
 4 of Block Number 6 of Baldwin's Eastern Addition and  
 Part of Lot Number 1 of Assessor's Plat Number 18 in  
 the City of Ann Arbor, Washtenaw County, Michigan is  
 described as follows: Commencing at the intersection  
 of the west line of Oswego Avenue and the north line of  
 Hill Street in accordance with the recorded Plat of J. D.  
 Baldwin's Eastern Addition to the City of Ann Arbor,  
 Washtenaw County, Michigan, and running thence north  
 77°59'10" west along the north line of Hill Street 72.30  
 feet for a PLACE OF BEGINNING; thence continuing  
 north 77°59'10" west on the north line of Hill Street  
 188.24 feet thence continuing in the north line of Hill  
 Street south 72°31'50" west 20.50 feet; thence north  
 0°19'10" west 365.72 feet; thence north 89°40'30" east  
 202.95 feet; thence south 0°19'40" east 400.00 feet to  
 the place of beginning.

SAID PLACE OF BEGINNING  
 BEING 486.28 FEET NORTH  
 & 587.90 FEET EAST OF  
 THE S 1/4 CORNER OF THE  
 S.E. 1/4 OF SEC. 28

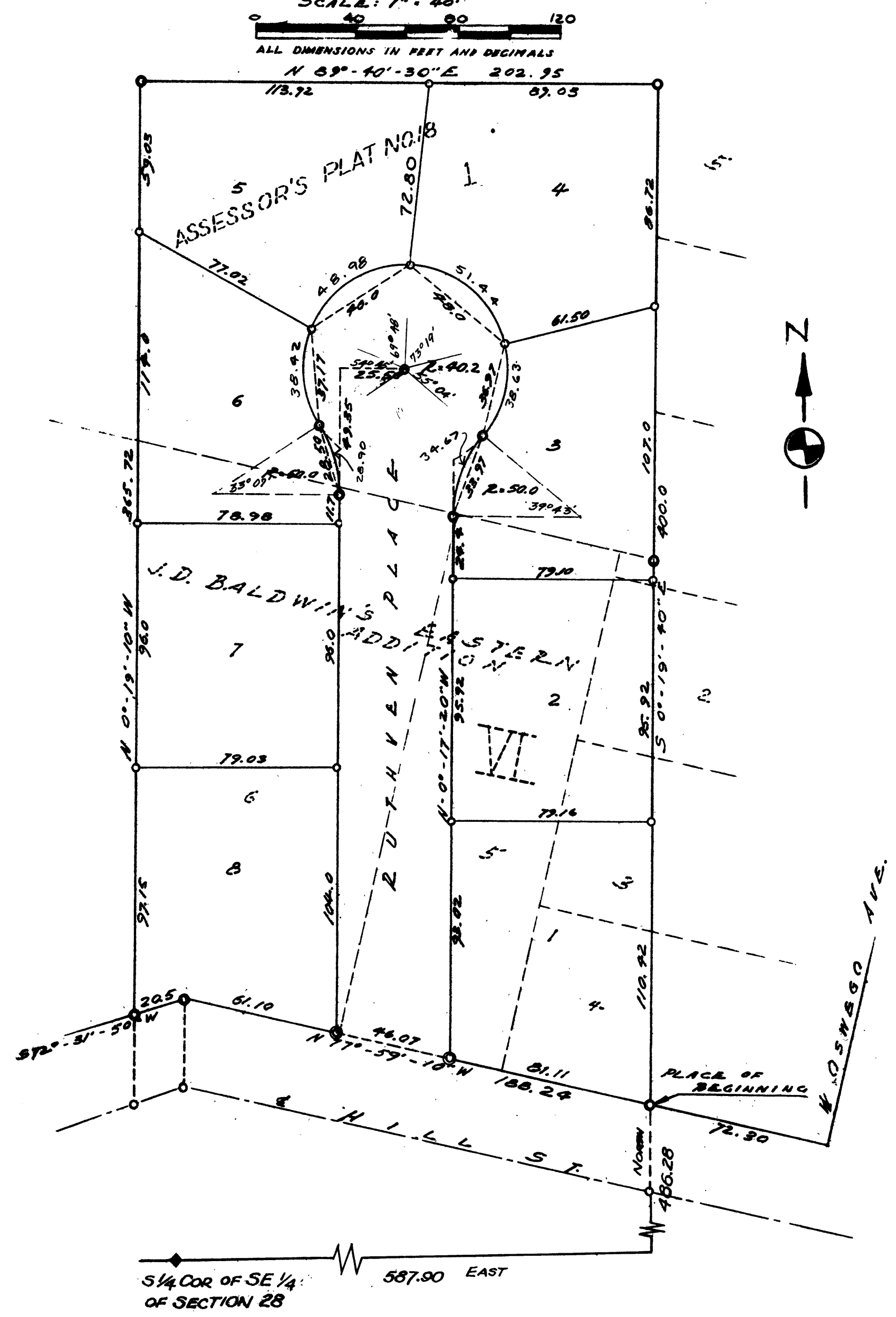
MC MULLEN'S RESURVEY

IN THE SE 1/4 OF SEC. 28, T2S, R6E  
 OF

LOTS NUMBER 5 & 6 AND PART OF LOTS NUMBER 1, 2, 3 & 4 OF BLOCK  
 NUMBER 6 OF BALDWIN'S EASTERN ADDITION AND PART OF LOT  
 NUMBER 1 OF ASSESSOR'S PLAT NUMBER 18 IN THE CITY OF  
 ANN ARBOR WASHTENAW COUNTY MICHIGAN

SURVEY BY ATWELL-HICKS INC.  
 SCALE: 1" = 40'

ALL DIMENSIONS IN FEET AND DECIMALS  
 N 69°-40'-30"E 202.95



SURVEYOR'S CERTIFICATE

I hereby certify that the plat hereon delineated is a correct one and that permanent  
 metal monuments consisting of bars not less than one-half inch in diameter and 48 inches  
 in length, or shorter bars of not less than one-half inch in diameter lapped over each  
 other at least 6 inches with an over-all length of not less than 48 inches, encased in a  
 concrete cylinder at least 4 inches in diameter and 48 inches in depth have been placed  
 at points marked thus (..R..) as thereon shown at all angles in the boundaries of the  
 land platted, at all the intersections of streets, intersections of alleys, or of streets and  
 alleys, and at the intersections of streets and alleys with the boundaries of the plat as  
 shown on said plat.

Herbert S. Hicks  
 Registered Land Surveyor or Registered Professional Engineer  
 No. 1715

APPROVAL BY BOARD OF COUNTY AUDITORS

Approved by the Board of County Auditors of Washtenaw  
 County, Michigan, this 23rd day of October, 1951.  
 J. Martin Rempp (Chairman)  
 Adolph J. Gross  
 Herbert G. Loeffler

MUNICIPAL APPROVAL

This plat was approved by the Board of City Commissioners  
 of the City of Ann Arbor, Michigan, at a meeting held on the 17th day of  
 October, 1951.  
 Fred J. Locker (Clerk)

CERTIFICATE OF APPROVAL BY THE  
 CITY PLANNING COMMISSION

This plat was approved by the Planning Commission of the  
 City of Ann Arbor, Michigan, at a meeting held on the 27th  
 day of August, 1951.

COPY  
 Register's Office  
 Washtenaw County, ss.  
 Plat of McMullen's Re-survey  
 City of Ann Arbor  
 was Recorded this 27th day of  
 January A.D. 1952 at 9:13 o'clock  
 A.M. in Liber 11 of Plate  
 on Page 30  
 Thomas A. Litz Gerald  
 P.J. Newkirk, Deputy

Frederick N. McOmber (Chairman)  
 William C. Walz (Sec'y)

S 1/4 COR OF SE 1/4  
 OF SECTION 28 587.90 EAST