

MARTIN ACRES

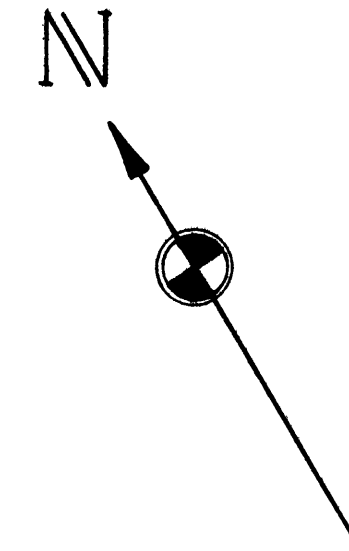
A SUBDIVISION OF PART OF THE E 1/2 OF THE NW 1/4 AND PART OF THE NE 1/4 OF THE SW 1/4 OF SECTION 19, TOWN 2 SOUTH, RANGE 6 EAST, CITY OF ANN ARBOR, WASHTENAW COUNTY, MICHIGAN.



SCALE 1" = 80'

ALL DIMENSIONS ARE IN FEET AND DECIMALS THEREOF
ALL CURVE DISTANCES ARE ARC DIMENSIONS

SURVEY BY ATWELL - HICKS INC.

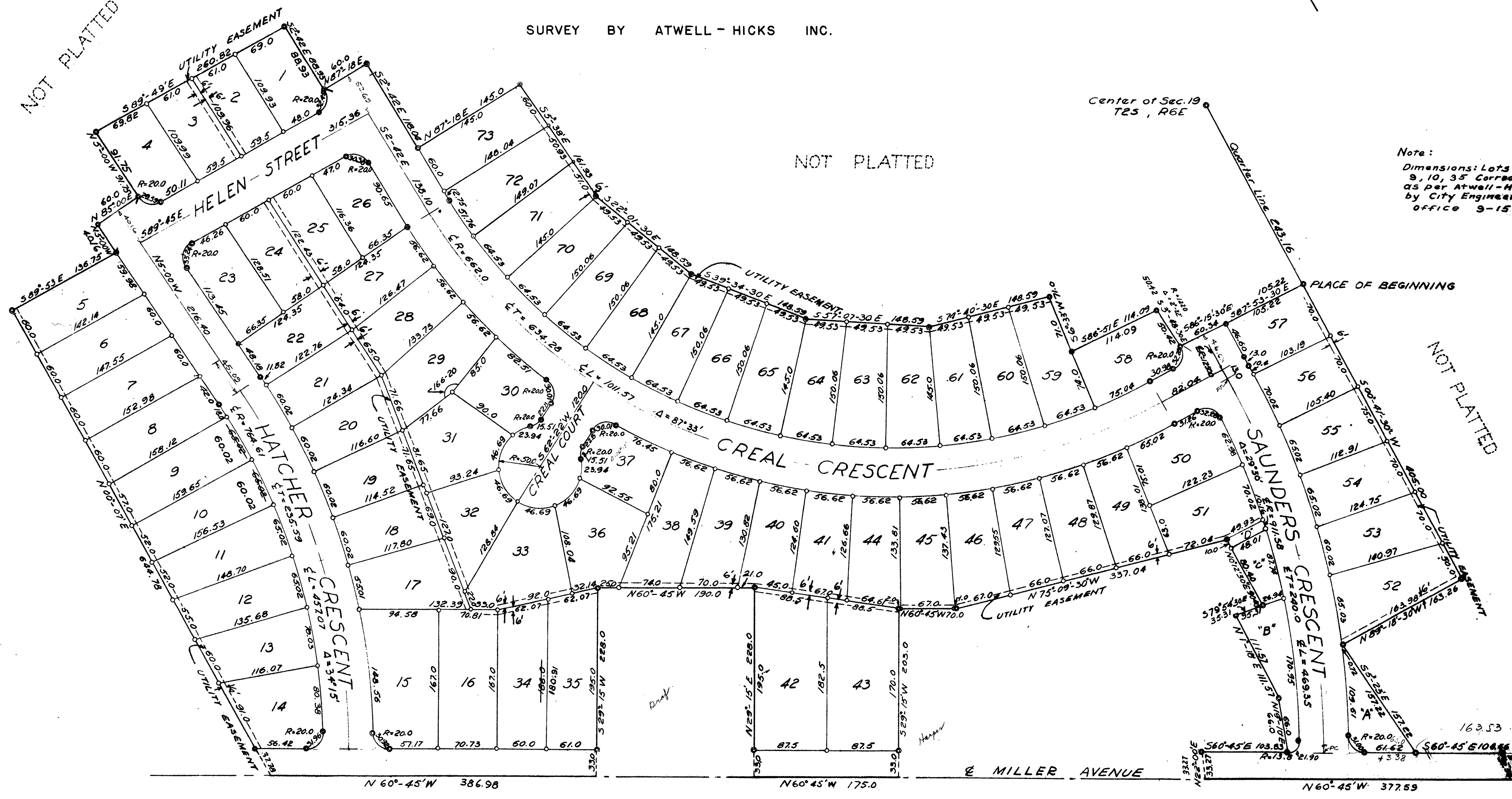


1 of 2
07/09/1953
PLANNING ENGINEER
ATWELL - HICKS INC.

NOT PLATTED

NOT PLATTED

NOT PLATTED



Center of Sec. 19
T2S, R6E

Note:
Dimensions: Lots
9, 10, 35 Corrected
as per Atwell-Hicks
by City Engineers
Office 9-15-53

PLACE OF BEGINNING

ARBOR HEIGHTS NO. 2.

JUL 7 1953

COPY
 Register's Office
 Washtenaw County, ss.
 Plat of Martin Acres
City of Ann Arbor
 was Recorded this 9th day of
July A.D., 1953 at 9:44 o'clock
 A.M. in Liber 11 of Plats
 on Page 262 and 63
Thomas A. Gallagher
 Register of Deeds
 ORIGINAL ON FILE
 Ray P. N. Hardy, Dep.

MARTIN ACRES

A SUBDIVISION OF PART OF THE E 1/2 OF THE NW 1/4 AND
 PART OF THE NE 1/4 OF THE SW 1/4 OF SECTION 19, TOWN
 2 SOUTH, RANGE 6 EAST, CITY OF ANN ARBOR,
 WASHTENAW COUNTY, MICHIGAN.



SCALE 1" = 80'

ALL DIMENSIONS ARE IN FEET AND DECIMALS THEREOF
 ALL CURVE DISTANCES ARE ARC DIMENSIONS

SURVEY BY ATWELL - HICKS INC.

I hereby certify that this copy is a true copy of
 the map or plat forwarded the Register of Deeds
 for recording.

Date July 7, 1953
 Filed in Auditor General's Dept.
 Date July 13, 1953
 Examined and Approved
 Date July 7, 1953

July B. Motta
 Auditor General
D. J. M. Gray
 PLAT ENGINEER

DEDICATION

KNOW ALL MEN BY THESE PRESENTS, that we Earl W. Martin,
and Julia C. Martin, his wife,
and Arbor Heights Building Corporation
a Michigan corporation by S. Brooks Barron
President, and Thomas A. Gallagher Secretary,
as proprietors, have caused the land embraced in the annexed plat to be surveyed, laid
out and platted to be known as Martin Acres, A Subdivision-
of part of the E. 1/2 of the N. W. 1/4 and part of the N. E.
1/4 of the S. W. 1/4 of Section 19, Town 2 South, Range 6
East, City of Ann Arbor, Washtenaw County, Michigan
and that the street, court, crescents, and avenue, as shown on said
plat are hereby dedicated to the use of the public.

Signed and Sealed in
 the Presence of:
Bruce D. Green Earl W. Martin
Bruce D. Green (Witness) Earl W. Martin
Robert J. Jagow (Witness) Julia C. Martin (L.S.)
Julia C. Martin

Signed and Sealed in
 the Presence of:
Earl Dye S. Brooks Barron
Earl Dye (Witness) S. Brooks Barron President
Mary E. Dye Thomas A. Gallagher
Mary E. Dye (Witness) Thomas A. Gallagher Secretary

ACKNOWLEDGMENT

STATE OF MICHIGAN }
 County of Washtenaw } ss.
 On this 3 day of June, 1953, before me,
 a Notary Public in and for said County, personally came the above named
Earl W. Martin and Julia C. Martin, his wife,
 known to me to be the persons who executed the above dedication, and acknowledged
 the same to be their free act and deed.
Lucile E. Lauer
LUCILE E. LAUER
 Notary Public, Washtenaw County
 My Commission expires 1-13-57

MUNICIPAL APPROVAL

This Plat was approved by the Board of Public Works
 of the City of Ann Arbor, Michigan, at a meeting
 held June 17, 1953
Fred J. Locker
 Fred J. Locker (Clerk)

ACKNOWLEDGMENT

STATE OF MICHIGAN
 County of Washtenaw
 On this 3 day of June, A.D. 1953, before
 me, LUCILE E. LAUER, a Notary Public in
 and for said county appeared S. Brooks Barron, and Thomas
A. Gallagher, to me personally known, who being each by me
 duly sworn did say that they are the President and Secretary
 respectively of the Arbor Heights Building Corporation, a
 Michigan Corporation, and that the seal affixed to said instru-
 ment is the corporate seal of said corporation and that said
 instrument was signed and sealed in behalf of said corporation
 by authority of its Board of Directors and the said S. Brooks
Barron and Thomas A. Gallagher, acknowledged said instrument
 to be the free act and deed of said corporation.
Lucile E. Lauer
LUCILE E. LAUER
 Notary Public, Washtenaw County
 My Commission Expires 1-13-57

CERTIFICATE OF APPROVAL BY THE CITY PLANNING COMMISSION

This Plat was approved by the Planning Commission of the City
 of Ann Arbor, Mich., at a meeting held on the 2nd day of
MAY 26 1953, 1953

Frederick N. McOmber
 Frederick N. McOmber (Chairman)
William C. Walz (Secretary)

APPROVAL BY COUNTY PLAT BOARD

This plat was approved on the 2nd day of
July, 1953, by the
Washtenaw County Plat Board
Thomas A. FitzGerald (County Register of Deeds)
J. Martin Rempp (County Auditor)
Adolph F. Gross (County Auditor)
Herbert G. Loeffler (County Auditor)

DESCRIPTION OF LAND PLATTED

The land embraced in the annexed plat of MARTIN ACRES,
 A Subdivision of part of the E. 1/2 of the N. W. 1/4
 and part of the N. E. 1/4 of the S. W. 1/4, Section 19, Town
 2 South, Range 6 East, City of Ann Arbor, Washtenaw
 County, Michigan

is described as follows:

Commencing at the center of Section 19, Town 2 South,
 Range 6 East, Ann Arbor Township, Washtenaw County,
 Michigan; thence S. 0° 41' 30" W., 243.16 ft. for a
 PLACE OF BEGINNING; thence continuing S. 0° 41' 30"
 W., 405.0 ft., thence N. 89° 18' 30" W., 163.26 ft.,
 thence S. 5° 23' E., 157.22 ft., thence S. 60° 45' E.,
 104.66 ft., thence S. 0° 46' W., 37.54 ft., thence N.
 60° 45' W., 377.59 ft., thence N. 22° 00' E., 33.27 ft.,
 thence S. 60° 45' E., 103.83 ft., thence N. 19° 10' E.,
 66.0 ft., thence N. 1° 10' E., 111.57 ft., thence S.
 79° 54' 30" E., 35.31 ft., thence N. 0° 12' 30" E.,
 90.40 ft., thence N. 75° 09' 30" W., 337.04 ft.,

thence N. 60° 45' W., 70.0 ft., thence S. 29° 15' W.,
 203.0 ft., thence N. 60° 45' W., 175.0 ft., thence N.
 29° 15' E., 228.0 ft., thence N. 60° 45' W., 190.0 ft.,
 thence S. 29° 15' W., 228.0 ft., thence N., 60° 45' W.,
 386.98 ft., thence N. 0° 07' E., 644.78 ft., thence S.
 89° 53' E., 136.75 ft., thence N. 5° 00' W., 40.16 ft.,
 thence N. 85° 00' E., 60.0 ft., thence N. 5° 00' W.,
 91.75 ft., thence S. 89° 49' E., 260.82 ft., thence
 S. 2° 42' E., 88.93 ft., thence N. 87° 18' E., 60.0 ft.,
 thence S. 2° 42' E., 118.04 ft., thence N. 87° 18' E.,
 145.0 ft., thence S. 5° 38' E., 161.93 ft., thence S.
 22° 01' 30" E., 148.59 ft., thence S. 39° 34' 30" E.,
 148.59 ft., thence S. 57° 07' 30" E., 148.59 ft., thence
 S. 74° 40' 30" E., 148.59 ft., thence S. 6° 33' W., 71.0
 ft., thence S. 86° 51' E., 114.09 ft., thence Southerly along
 the arc of a circular curve concave to the West, the radius of
 which is 1220.0 ft., the chord of which bears S. 3° 48' 30"
 E., 50.42 ft., thence S. 86° 15' 30" E. 60.34 ft., thence
 S. 87° 53' 30" E., 105.22 ft. to the place of beginning,
 being a part of the East 1/2 of the Northwest 1/4 of part of
 the North east 1/4 of the Southwest 1/4 of said Section 19.

MUNICIPAL APPROVAL

This plat was approved by the Common Council
 of the City of Ann Arbor
 at a meeting held June 17, 1953
Fred J. Locker (Clerk)

SURVEYOR'S CERTIFICATE

I hereby certify that the plat hereon delineated is a correct one and that permanent
 metal monuments consisting of bars not less than one-half inch in diameter and 48 inches
 in length, or shorter bars of not less than one-half inch in diameter lapped over each
 other at least 6 inches with an over-all length of not less than 48 inches, encased in a
 concrete cylinder at least 4 inches in diameter and 48 inches in depth have been placed
 at points marked thus (.....) as thereon shown at all angles in the boundaries of the
 land platted, at all the intersections of streets, intersections of alleys, or of streets and
 alleys, and at the intersections of streets and alleys with the boundaries of the plat as
 shown on said plat.

Herbert S. Hicks
 Registered Land Surveyor or Registered Professional Engineer
 Herbert S. Hicks No. 1715

COUNTY TREASURER'S CERTIFICATE

Office of County Treasurer, Washtenaw County.
 I hereby certify, that there are no tax liens or titles held by the State on the lands de-
 scribed hereon, and that there are no tax liens or titles held by individuals on said lands,
 for the five years preceding the 25th day of
June, 1953, and that the taxes for said period of
 five years are all paid, as shown by the records of this office
 This certificate does not apply to taxes, if any, now in process of collection by township,
 city or village collecting officers.

W. F. Verner
 W. F. Verner (County Treasurer)