

WESTAIRE TERRACE SUBDIVISION

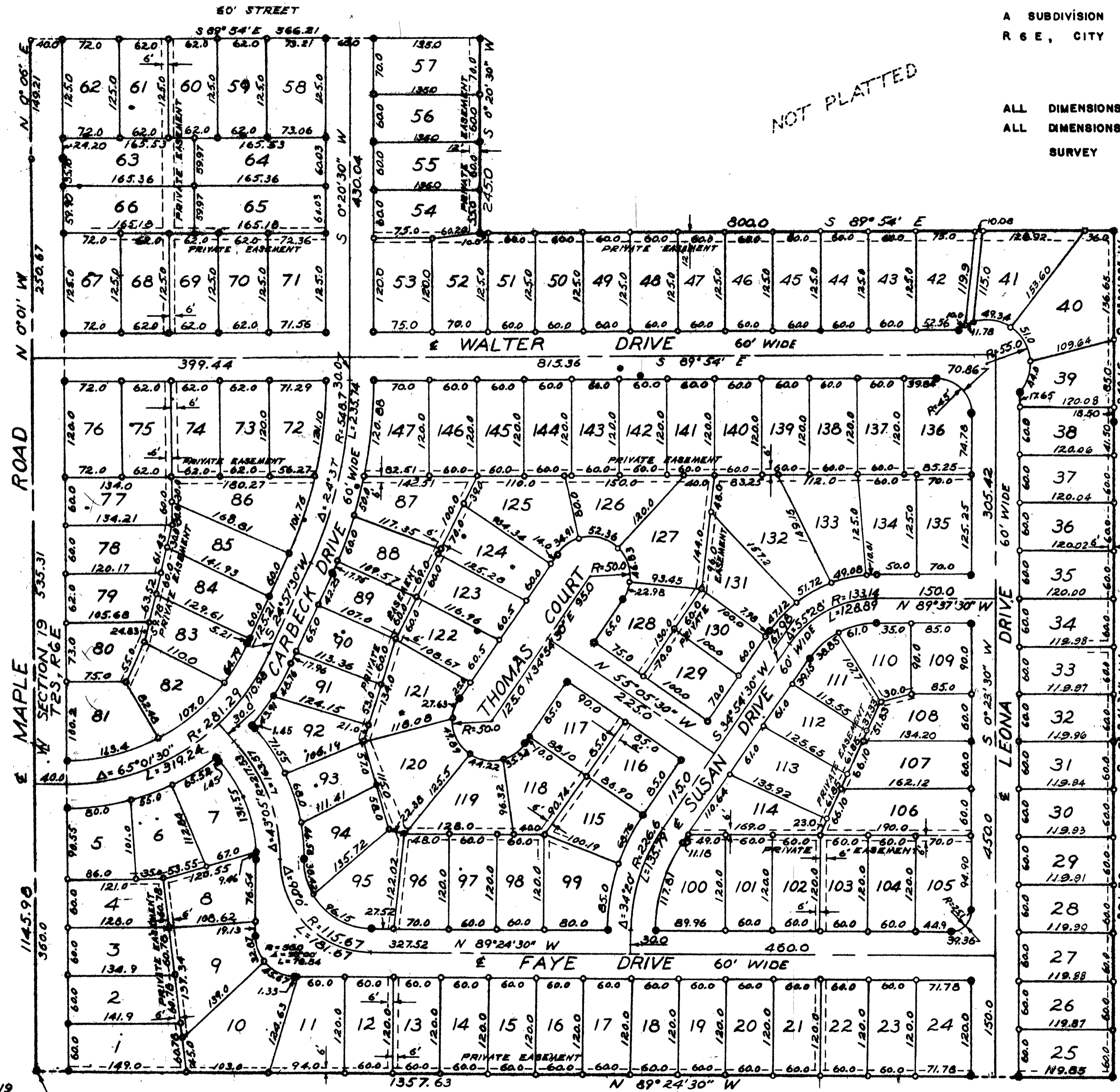
MAPLE RIDGE

A SUBDIVISION OF PART OF THE SOUTHWEST 1/4 OF SEC. 19, T2S, R6E, CITY OF ANN ARBOR, WASHTENAW COUNTY, MICHIGAN

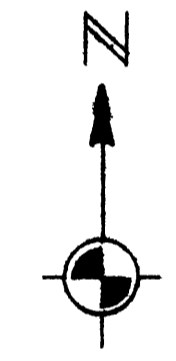


ALL DIMENSIONS IN FEET AND DECIMALS THEREOF  
ALL DIMENSIONS ON CURVES ARE ARC LENGTHS  
SURVEY BY ATWELL - HICKS, INC.

6557/03/00  
80-19-18786  
ST. MICHAEL'S  
BUREAU  
100000000  
2 40 1



NOT PLATTED



ARBOR HEIGHTS SUBDIVISION

NOT PLATTED

SCIOTO HILLS NO. 1

SW COR. SEC. 19 T2S - R6E

MAPLE RIDGE SUBDIVISION,

PART OF THE SW 1/4 OF THE SW 1/4 SEC. 19 T2S R6E CITY OF ANN ARBOR, WASHTENAW COUNTY, MICH.



SCALE 1" = 100'

ALL DIMENSIONS IN FEET AND DECIMALS THEREOF

ALL DIMENSIONS ON CURVES ARE ARC LENGTHS

SURVEY BY ATWELL - HICKS, INC.

COPY

Register's Office Washtenaw County, ss. Plat of Maple Ridge, City of Ann Arbor was Recorded this 4th day of May A.D., 1955 at 4:40 o'clock A.M. in Liber 12 of Plate 47 and 48 Patricia Newkirk Hardy Register of Deeds ORIGINAL ON FILE

SURVEYOR'S CERTIFICATE

I hereby certify that the plat hereon delineated is a correct one and that permanent metal monuments consisting of bars not less than one-half inch in diameter and 36 inches in length, or shorter bars of not less than one-half inch in diameter lapped over each other at least 6 inches with an over-all length of not less than 36 inches, encased in a concrete cylinder at least 4 inches in diameter and 36 inches in depth have been placed at points marked thus (C) as thereon shown at all angles in the boundaries of the land platted, at all the intersections of streets, intersections of alleys, or of streets and alleys, and at the intersections of streets and alleys with the boundaries of the plat as shown on said plat.

Herbert S. Hicks Registered Land Surveyor #1715

DEDICATION

KNOW ALL MEN BY THESE PRESENTS, that we, Floyd A. Sergeant and Mildred T. Sergeant, his wife, and Van Dusen-Carbeck, Inc., a Michigan corporation by Walter D. Van Dusen, President, and Albert E. Blashfield, Secretary, as proprietors, have caused the land embraced in the annexed plat to be surveyed, laid out and platted to be known as "MAPLE RIDGE SUBDIVISION, part of the SW 1/4 of the SW 1/4 of Sec 19 T2S R6E City of Ann Arbor, Washtenaw County, Mich" and that the road and drives as shown on said plat are hereby dedicated to the public.

Signed and Sealed in the Presence of:

Harriet C. Hoppe (Witness) Floyd A. Sergeant (L.S.) Mildred T. Sergeant (L.S.) BERTHA R. SEVEBECK (Witness)

Signed and Sealed in the Presence of:

MARGARET H. POMMERENING (Witness) Van Dusen - Carbeck, Inc. by Walter D. Van Dusen (President) Albert E. Blashfield (Secretary)

DESCRIPTION OF LAND PLATTED

The land embraced in the annexed plat of "MAPLE RIDGE SUBDIVISION, part of the SW 1/4 of the SW 1/4 of Sec 19 T2S R6E City of Ann Arbor, Washtenaw County, Mich" is described as follows:

BEGINNING at the SW corner of Sec 19 T2S R6E, Ann Arbor Township, Washtenaw County, Mich.; thence N 0 -01'-00" W 1145.72 feet along the west line of said Section 19; thence N 0 -06'-00" E 149.25 feet along the west line of said Section 19; thence S 89 -54'-00" E 566.22 feet; thence S 0 -20'-30" W 245.00 feet; thence S 89 -54'-00" E 800.00 feet; thence S 0 -20'-30" W 240.15 feet; thence S 0 -24'-30" W 821.50 feet; thence N 89 -24'-30" W 1357.63 feet to the place of beginning, containing 147 lots numbered 1-147 inclusive.

I hereby certify this copy is a true copy of map or plat forwarded the Register of Deeds for recording. Date: May 6, 1955 Filed in Auditor General's Dept. Examined and approved Date: May 11, 1955 Date: May 6, 1955

MUNICIPAL APPROVAL

This plat was approved by the Board of Public Works of the City of Ann Arbor at a meeting held April 15, 1955

Fred J. Looker (Clerk)

APPROVAL BY THE COUNTY PLAT BOARD

This plat was approved on the 27th day of April, 1955

Patricia Newkirk Hardy (County Register of Deeds) J. Martin Rempp (Auditor) Adolph F. Gross (Auditor) Herbert G. Loeffler (Auditor)

MUNICIPAL APPROVAL

This plat was approved by the Common Council of the City of Ann Arbor at a meeting held April 18, 1955

Fred J. Looker (Clerk)

ACKNOWLEDGMENT

STATE OF MICHIGAN ) ss. County of Washtenaw )

On this 10th day of January, 1955, before me a Notary Public in and for said County, personally came the above named Floyd A. Sergeant and Mildred T. Sergeant known to me to be the persons who executed the above dedication, and acknowledged the same to be their free act and deed.

Harriet C. Hoppe (Notary Public) My Commission expires Dec. 9, 1958

ACKNOWLEDGMENT

STATE OF MICHIGAN ) ss. County of Washtenaw )

On this 11th day of January, A.D. 1955, before me a Notary Public in and for said county appeared Walter D. Van Dusen and Albert E. Blashfield to me personally known, who being each by me duly sworn did say that they are the President and Secretary respectively of Van Dusen-Carbeck, Inc., a Michigan corporation, and that the seal affixed to said instrument is the corporate seal of said corporation and that said instrument was signed and sealed in behalf of said corporation by authority of its Board of Directors and the said Walter D. Van Dusen and Albert E. Blashfield acknowledged said instrument to be the free act and deed of said corporation.

MARGARET H. POMMERENING (Notary Public) My Commission expires Sept. 3, 1957

COUNTY TREASURER'S CERTIFICATE

Office of County Treasurer, Washtenaw County. I hereby certify, that there are no tax liens or titles held by the State on the lands described hereon, and that there are no tax liens or titles held by individuals on said lands, for the five years preceding the 27th day of April, 1955, and that the taxes for said period of five years are all paid, as shown by the records of this office. This certificate does not apply to taxes, if any, now in process of collection by township, city or village collecting officers.

W. F. Vernor (County Treasurer)

APPROVAL BY BOARD OF COUNTY ROAD COMMISSIONERS

THIS PLAT HAS BEEN EXAMINED AND WAS APPROVED ON THE 29th DAY OF April, 1955 BY THE WASHTENAW COUNTY BOARD OF ROAD COMMISSIONERS

JAMES C. HENDLEY (CHAIRMAN) RAYMOND L. KOCH (MEMBER) H. L. FRISINGER (MEMBER)

CERTIFICATE OF APPROVAL BY THE CITY PLANNING COMMISSION

This plat was approved by the Planning Commission of the City of Ann Arbor, Mich., at a meeting held on the 14th day of APR 14 1955

John E. Swisher, Jr. (Chairman) Sybil K. Bennett (Secretary)

CITY CLERK'S CERTIFICATE

Office of City Clerk, City of Ann Arbor I hereby certify, that the width and depth of lots shown on this plat are in compliance with rules and regulations of the City of Ann Arbor and the requirements as to width and depth of Sec. 30 of Act 172, Public Acts of 1929 as amended by Act 186 Public Acts of 1954.

Fred J. Looker (Clerk)