

LANDSDOWNE

A SUBDIVISION OF PART OF THE NW 1/4 OF SECTION 5,
AND OF PART OF THE NE 1/4 OF SECTION 6, T35, R6E,
CITY OF ANN ARBOR, WASHINGTON COUNTY, MICHIGAN

SCALE: 1"=100'
0 100 200 300

ALL DIMENSIONS IN FEET AND DECIMALS THEREOF
ALL DIMENSIONS ON CURVES ARE ARC LENGTHS
SURVEY AND DESIGN BY ATWELL-HICKS, INC.

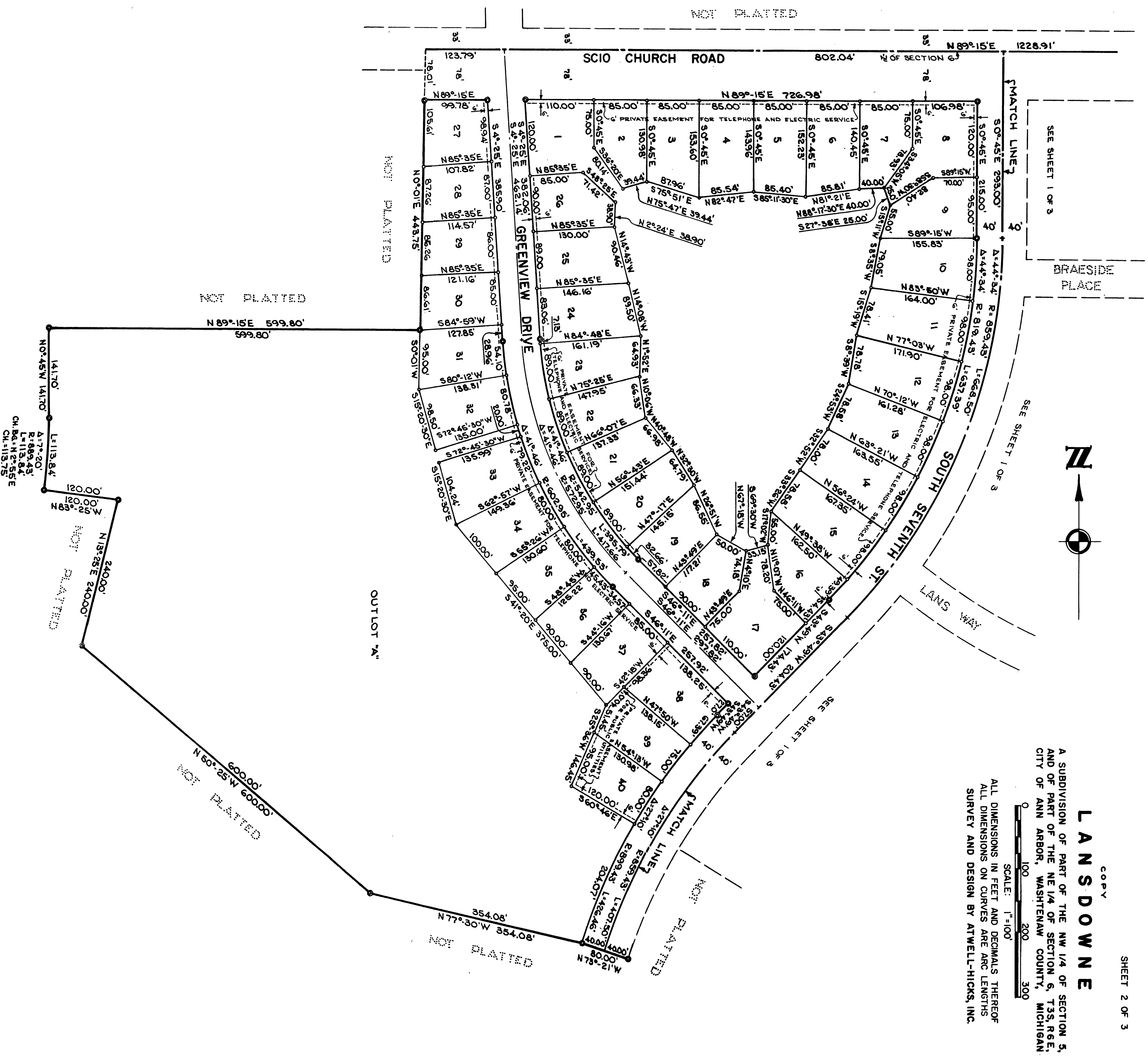
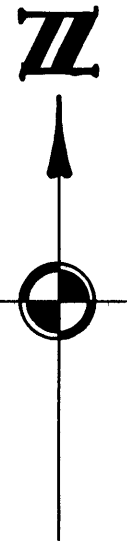
April 29, 1963
Richard E. Lewis
April 29, 1963

COPY
LANDSDOWNE
A SUBDIVISION OF PART OF THE NW 1/4 OF SECTION 5,
AND OF PART OF THE NE 1/4 OF SECTION 6, T35, R6E,
CITY OF ANN ARBOR, WASHTENAW COUNTY, MICHIGAN.

ALL DIMENSIONS IN FEET AND DECIMALS THEREOF
ALL DIMENSIONS ON CURVES ARE ARC LENGTHS
SURVEY AND DESIGN BY ATWELL-HICKS, INC.

SCALE: 1"=100'

0 100 200 300



SEE SHEET 1 OF 3

SEE SHEET 1 OF 3

SEE SHEET 1 OF 3

NOT PLATTED

NOT PLATTED

NOT PLATTED

NOT PLATTED

CH. 86.1 N 2° 55' E
L=113.84'
A=7° 20'
R=889.43'
L=113.84'
CH. 113.75'

DEDICATION

ACKNOWLEDGMENT

KNOW ALL MEN BY THESE PRESENTS, that we, William S. Trowbridge, Jr. and Ruth K. Trowbridge, his wife and Henry A. Vick, a single man, and the Public Schools of the City of Ann Arbor, a Michigan Corporation, by Rhea K. Kish, President, and George Balas, Secretary, and the City of Ann Arbor, a Michigan Municipal Corporation, by Cecil O. Creal, Mayor and Fred J. Looker, Clerk, and the Vernon Development Co., a Michigan Corporation by George V. Airey President and E. Maude Weeks, Secretary, as proprietors, have caused the land embraced in the annexed plat to be surveyed, laid out and platted to be known as LANDSDOWNE a subdivision of part of the NW 1/4 of Section 5, and of part of the NE 1/4 of Section 6, T3S, R6E, City of Ann Arbor, Washtenaw County, Michigan, and that the Roads, Drives, Street, Way, Court, Places, Pedestrian Way and Outlot Bas shown on said Plat are hereby dedicated to the public and the easements indicated on said Plat are not dedicated to the public but reserved for public utilities and any other use designated hereon and no permanent structures are to be located within said easement, and as to such land deeded to the City of Ann Arbor by instrument recorded in Liber 1016 of Deeds, page 21, Washtenaw County Records, the City of Ann Arbor joins in the dedication of such land to the public for Park purposes.

Signed in the Presence of:

Clara A. VanWinkle Witness
Charles A. Trambauer Witness

William S. Trowbridge, Jr.
Ruth K. Trowbridge

Signed in the Presence of:

Clara A. VanWinkle Witness
Charles A. Trambauer Witness

Henry A. Vick

Signed and Sealed in the Presence of:

Thad Carr Witness
Bertha Duffren Witness

PUBLIC SCHOOLS OF THE CITY OF ANN ARBOR

Rhea K. Kish, President
George Balas, Secretary

Signed and Sealed in the Presence of:

Jean Eskelinen Witness
Helen I. Clark Witness

CITY OF ANN ARBOR

Cecil O. Creal, Mayor
Fred J. Looker, Clerk

Signed and Sealed in the Presence of:

Charles A. Trambauer Witness
Clara A. VanWinkle Witness

VERNON DEVELOPMENT CO.

George V. Airey, President
E. Maude Weeks, Secretary

DESCRIPTION OF LAND PLATTED

The land embraced in the annexed plat of LANDSDOWNE a subdivision of part of the NW 1/4 of Section 5, and of part of the NE 1/4 of Section 6, T3S, R6E, City of Ann Arbor, Washtenaw County, Michigan is described as follows:

BEGINNING at the NW corner of Section 5, T3S, R6E, City of Ann Arbor, Washtenaw County, Michigan; thence along the north line of said section, N 89°-39' E 975.34 feet; thence S 0°-32' E 565.62 feet; thence S 0°-53' W 432.46 feet; thence S 54°-55' W 438.00 feet; thence S 35°-05' E 28.00 feet; thence S 72°-20' W 188.00 feet; thence Southerly 151.51 feet along the arc of a circular curve concave to the West, radius 313.77 feet, chord bearing S 3°-50' E 150.04 feet; thence S 10°-00' W 64.47 feet; thence N 80°-00' W 688.76 feet; thence N 5°-23'-30" E 278.00 feet; thence N 69°-41' W 260.00 feet; thence S 43°-49' W 315.00 feet; thence S 27°-19' W 70.00 feet; thence N 59°-46' W 130.00 feet; thence Southwesterly 194.27 feet along the arc of a circular curve concave to the Southeast, radius 819.43 feet, chord bearing S 23°-26'-30" W 193.81 feet; thence N 73°-21' W 80.00 feet; thence N 77°-30' W 354.08 feet; thence N 50°-25' W 600.00 feet; thence N 13°-25' E 240.00 feet; thence N 83°-25' W 120.00 feet; thence Northerly 113.84 feet along the arc of a circular curve concave to the West, radius 889.43 feet, chord bearing N 2°-55' E 113.75 feet; thence N 0°-45' W 141.70 feet; thence N 89°-15' E 599.80 feet; thence N 0°-01' E 443.75 feet; thence along the north line of Section 6, T3S, R6E, N 89°-15' E 1228.91 feet to the Place of Beginning, containing 150 lots numbered 1 through 150 inclusive and two Outlots lettered A and B.

STATE OF MICHIGAN)
County of Washtenaw)

On this 25th day of FEBRUARY, 1963, before me, a Notary Public in and for said county, personally came the above named William S. Trowbridge, Jr. and Ruth K. Trowbridge his wife, known to me to be the persons who executed the above dedication, and acknowledged the same to be their free act and deed.

Clara A. VanWinkle
Notary Public, Washtenaw County, Michigan
My Commission expires MARCH 22, 1966.

ACKNOWLEDGMENT

STATE OF MICHIGAN)
County of Washtenaw)

On this 8th day of FEBRUARY, 1963, before me, a Notary Public in and for said county, personally came the above named Henry A. Vick, a single man, known to me to be the person who executed the above dedication and acknowledged the same to be his free act and deed.

Clara A. VanWinkle
Notary Public, Washtenaw County, Michigan
My Commission expires MARCH 22, 1966.

ACKNOWLEDGMENT

STATE OF MICHIGAN)
County of Washtenaw)

On this 8th day of April, 1963, before me, a Notary Public in and for said county appeared Cecil O. Creal and Fred J. Looker to me personally known, who being each by me duly sworn did say that they are the Mayor and Clerk respectively of the City of Ann Arbor a Michigan Municipal Corporation, and that the seal affixed to said instrument is the corporate seal of said corporation and that said instrument was signed and sealed in behalf of said corporation by authority of its Council and the said Cecil O. Creal and Fred J. Looker acknowledged said instrument to be the free act and deed of said corporation.

Lambert H. Fleming
Notary Public, Washtenaw County, Mich.
My Commission Expires Aug. 1, 1965

ACKNOWLEDGMENT

STATE OF MICHIGAN)
County of Washtenaw)

On this 11th day of February, 1963, before me, a Notary Public in and for said county appeared Rhea K. Kish and George Balas to me personally known, who being each by me duly sworn did say that they are the President and Secretary respectively of the Public Schools of the City of Ann Arbor a Michigan Corporation, and that the seal affixed to said instrument is the corporate seal of said corporation and that said Rhea K. Kish and George Balas acknowledged said instrument to be the free act and deed of said corporation.

Thad Carr
Notary Public, Washtenaw County, Michigan
My Commission expires October 8, 1963.

ACKNOWLEDGMENT

STATE OF MICHIGAN)
County of Washtenaw)

On this 8th day of FEBRUARY, 1963, before me, a Notary Public in and for said County appeared George V. Airey and E. Maude Weeks to me personally known, who being each by me duly sworn did say that they are the President and Secretary respectively of the Vernon Development Co. a Michigan Corporation, and that the seal affixed to said instrument is the corporate seal of said Corporation and that said instrument was signed and sealed in behalf of said Corporation by authority of its Board of Directors and the said George V. Airey and E. Maude Weeks acknowledged said instrument to be the free act and deed of said Corporation.

Clara A. VanWinkle
Notary Public, Washtenaw County, Michigan
My Commission expires MARCH 22, 1966.

COPY
LANDSDOWNE

A SUBDIVISION OF PART OF THE NW 1/4 OF SECTION 5, AND OF PART OF THE NE 1/4 OF SECTION 6, T3S, R6E, CITY OF ANN ARBOR, WASHTENAW COUNTY, MICHIGAN



SCALE: 1"=100'
ALL DIMENSIONS IN FEET AND DECIMALS THEREOF
ALL DIMENSIONS ON CURVES ARE ARC LENGTHS
SURVEY AND DESIGN BY ATWELL-HICKS, INC.

CERTIFICATE OF APPROVAL BY THE CITY PLANNING COMMISSION

This plat was approved by the Planning Commission of the City of Ann Arbor, Michigan at a meeting held on the 12th day of MARCH, 1963.

COPY

Register's Office } S.S.
Washtenaw County }
Plat of Landsdowne
was Recorded this 30th day of April A.D., 1963 at 10:40 o'clock P.M. in Liber 16 of plats on Pages 43-44-45
Richard A. Ware, Chairman
David S. Pollock, Vice-Chairman
Joseph W. Edwards, Secretary

CERTIFICATE OF MUNICIPAL APPROVAL

This plat was approved by the Common Council of the City of Ann Arbor at a meeting held March 16, 1963, and is in compliance with Section 19a and that the width of lots conforms with requirements of Section 30, Act 172, of 1929, as amended.

Fred J. Looker, Clerk

COUNTY TREASURER'S CERTIFICATE
Office of County Treasurer, Washtenaw County

I hereby certify, that there are no tax liens or titles held by the State on the lands described hereon, and that there are no tax liens or titles held by individuals on said lands for the five years preceding the 9th day of April, 1963 and that the taxes for said period of five years are all paid, as shown by the records of this office.

S. A. Leonard, County Treasurer

APPROVAL BY COUNTY PLAT BOARD

This plat was approved on the 17th day of April, 1963, by the Washtenaw County Plat Board.

Patricia Newkirk Hardy, County Register of Deeds
John H. Flook, County Drain Commissioner
J. Martin Rempp, Auditor
Herbert G. Loeffler, Auditor

SURVEYOR'S CERTIFICATE

I hereby certify that the plat hereon delineated is a correct one and that permanent metal monuments consisting of bars not less than one-half inch in diameter and 36 inches in length, or shorter bars of not less than one-half inch in diameter lapped over each other at least 6 inches with an over-all length of not less than 36 inches, encased in a concrete cylinder at least 4 inches in diameter and 36 inches in depth have been placed at points marked thus (O) as thereon shown at all angles in the boundaries of the land platted, at all the intersections of streets, intersections of alleys, or of streets and alleys, and at the intersection of streets and alleys with the boundaries of the plat as shown on said plat.

Carl H. Soil, Registered Land Surveyor No. 13043