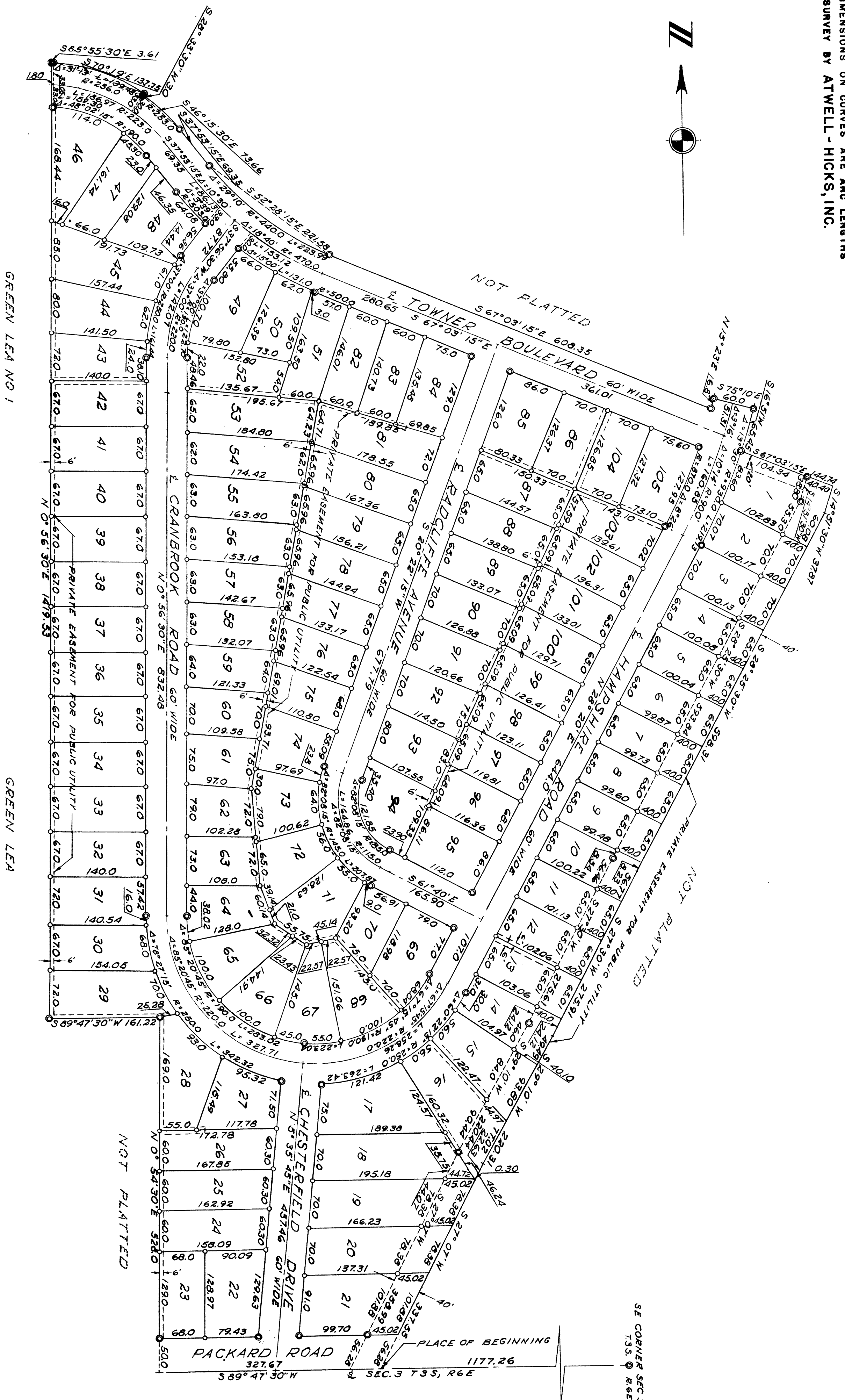


KENSINGTON FARMS

A SUBDIVISION OF PART OF THE SE 1/4 SEC 3, T35, R6E,
CITY OF ANN ARBOR, WASHINGTON COUNTY, MICHIGAN

SCALE 1" = 100'

ALL DIMENSIONS IN FEET AND DECIMALS THEREOF
SURVEY BY ATWELL-HICKS, INC.



SHEET 1 OF 2

KENSINGTON FARMS

A SUBDIVISION OF PART OF THE SE 1/4 SEC 3, T 3 S, R 6 E,
CITY OF ANN ARBOR, WASHTENAW COUNTY, MICHIGAN



SCALE 1"= 100'

ALL DIMENSIONS IN FEET AND DECIMALS THEREOF

ALL DIMENSIONS ON CURVES ARE ARC LENGTHS

SURVEY BY ATWELL - HICKS, INC.

DEDICATION

KNOW ALL MEN BY THESE PRESENTS, that Albert Klager, Wilhelmina J. Klager, his wife; Bernard B. Brown, Dorothy D. Brown, his wife; Donald H. Roberts, Anne B. Roberts, his wife; and Green Lea Development Co., a co-partnership consisting of Leo P. Meyers and Eugene H. Towner, Winifred E. Meyers and Wanda Jean Towner, their wives, as proprietors, have caused the land embraced in the annexed plat to be surveyed, laid out and platted, to be known as KENSINGTON FARMS, a subdivision of part of the SE 1/4 of Sec 3, T 3 S, R 6 E, City of Ann Arbor, Washtenaw County, Michigan and that the roads, boulevards, avenues and drives as shown on said plat are hereby dedicated to the use of the public.

Signed and Sealed in the Presence of:

Ralph V. Monk
Ralph V. Monk (Witness)

Albert Klager
Albert Klager (L.S.)

Cletore E. Franz
Cletore E. Franz (Witness)

Wilhelmina J. Klager
Wilhelmina J. Klager (L.S.)

Bernard B. Brown
Bernard B. Brown (L.S.)

Dorothy D. Brown
Dorothy D. Brown (L.S.)

Donald H. Roberts
Donald H. Roberts (L.S.)

Anne B. Roberts
Anne B. Roberts (L.S.)

Green Lea Development Co.
By *Leo P. Meyers*
Leo P. Meyers (L.S.)

Eugene H. Towner
Eugene H. Towner (L.S.)

Winifred E. Meyers
Winifred E. Meyers (L.S.)

Wanda Jean Towner
Wanda Jean Towner (L.S.)

ACKNOWLEDGMENT

STATE OF MICHIGAN)
County of *Washtenaw*) SS

On this *15th* day of *April*, 19*55*, before me, a Notary Public in and for said County, personally came the above named Albert Klager and Wilhelmina J. Klager, his wife; Bernard B. Brown and Dorothy D. Brown, his wife; Donald H. Roberts and Anne B. Roberts, his wife, known to me to be the persons who executed the above dedication, and acknowledged the same to be their free act and deed.

Lucile E. Lauer
Lucile E. Lauer
Notary Public *Washtenaw* County

My Commission expires *1-13-57*.

SURVEYOR'S CERTIFICATE

I hereby certify that the plat hereon delineated is a correct one and that permanent metal monuments consisting of bars not less than one-half inch in diameter and 36 inches in length, or shorter bars of not less than one-half inch in diameter lapped over each other at least 6 inches with an over-all length of not less than 36 inches, encased in a concrete cylinder at least 4 inches in diameter and 36 inches in depth have been placed at points marked thus (⊙) as thereon shown at all angles in the boundaries of the land platted, at all the intersections of streets, intersections of alleys, or of streets and alleys, and at the intersections of streets and alleys with the boundaries of the plat as shown on said plat.

Herbert S. Hicks
Herbert S. Hicks
Registered Land Surveyor and Professional Engineer # 1715

ACKNOWLEDGMENT

STATE OF MICHIGAN)
County of *Washtenaw*) SS

On this *15th* day of *April*, 19*55*, before me, a Notary Public in and for said county appeared Leo P. Meyers, Eugene H. Towner, Winifred E. Meyers, and Wanda Jean Towner to me personally known, who being each by me duly sworn did say that they are co-partners of Green Lea Development Co., a co-partnership, and that said instrument was signed in behalf of said co-partnership and acknowledged said instrument to be the free act and deed of said co-partnership.

Lucile E. Lauer
Lucile E. Lauer
Notary Public *Washtenaw* County
My Commission expires *1-13-57*.

DESCRIPTION OF LAND PLATTED

The land embraced in the annexed plat of KENSINGTON FARMS a subdivision of part of the SE 1/4 Sec 3, T 3 S, R 6 E, City of Ann Arbor, Washtenaw County, Michigan is described as follows:

COMMENCING at the SE corner of Sec 3, T 3 S, R 6 E, Pittsfield Township, Washtenaw County, Michigan; thence S 89°-47'-30" W 1177.26 feet along the South line of said section for a PLACE OF BEGINNING; thence continuing along the same course 327.67 feet; thence N 0°-54'-30" E 528.0 feet; thence S 89°-47'-30" W 161.22 feet; thence N 0°-56'-30" E 1419.53 feet; thence S 85°-55'-30" E 3.61 feet; thence in the arc of a circular curve concave to the South, radius 256.0 feet, chord S 70°-19' E 137.75 feet; thence S 28°-33'-30" W 3.0 feet; thence in the arc of a circular curve concave to the SW, radius 253.0 feet, chord S 46°-15'-30" E 73.66 feet; thence S 37°-53'-15" E 69.35 feet; thence in the arc of a circular curve concave to the NE, radius 440.0 feet, chord S 52°-28'-15" E 221.58 feet; thence S 67°-03'-15" E 608.35 feet; thence in the arc of a circular curve concave to the West, radius 870.0 feet, chord N 15°-23' E 16.8 feet; thence S 75°-10' E 60.0 feet; thence in the arc of a circular curve concave to the West, radius 930.0 feet, chord S 16°-51' W 65.45 feet; thence S 67°-03'-15" E 144.74 feet; thence S 14°-51'-30" W 37.87 feet; thence S 28°-25'-30" W 598.31 feet; thence S 27°-30' W 275.91 feet; thence S 29°-10' W 220.31 feet; thence S 27°-07' W 337.55 feet to the place of beginning, containing 105 lots numbered 1 to 105.

CITY CLERK'S CERTIFICATE

Office of City Clerk, City of Ann Arbor
I hereby certify, that the width and depth of lots shown on this plat are in compliance with rules and regulation of the City of Ann Arbor and the requirements as to width and depth of Sec. 30 of Act 172, Public Acts of 1929 as amended by Act 186 Public Acts of 1954.

Fred J. Looker
Fred J. Looker (Clerk)

MUNICIPAL APPROVAL

This plat was approved by the Board of Public Works of the City of Ann Arbor at a meeting held *April 7, 1955*.

Fred J. Looker
Fred J. Looker (Clerk)

MUNICIPAL APPROVAL

This plat was approved by the Common Council of the City of Ann Arbor at a meeting held *May 7, 1955*.

Fred J. Looker
Fred J. Looker (Clerk)

CERTIFICATE OF APPROVAL BY THE CITY PLANNING COMMISSION

This plat was approved by the Planning Commission of the City of Ann Arbor, Michigan, at a meeting held on the *15th* day of *April*, 19*55*.

John E. Swisher, Jr.
John E. Swisher, Jr. (Chairman)
Sybil K. Bennett
Sybil K. Bennett (Secretary)

APPROVAL BY COUNTY PLAT BOARD

This plat was approved on the *6th* day of *May*, 19*55*, by the Washtenaw County Plat Board.

Patricia Newkirk Hardy
Patricia Newkirk Hardy (County Register of Deeds)
J. Martin Rempp
J. Martin Rempp (Auditor)
Adolph F. Gross
Adolph F. Gross (Auditor)
Herbert G. Loeffler
Herbert G. Loeffler (Auditor)

COUNTY TREASURER'S CERTIFICATE

Office of County Treasurer, Washtenaw County.
I hereby certify, that there are no tax liens or titles held by the State on the lands described hereon, and that there are no tax liens or titles held by individuals on said lands, for the five years preceding the *6th* day of *May*, 19*55*, and that the taxes for said period of five years are all paid, as shown by the records of this office.
This certificate does not apply to taxes, if any, now in process of collection by township, city or village collecting officers.

W. F. Verner
W. F. Verner (County Treasurer)

APPROVAL BY BOARD OF COUNTY ROAD COMMISSIONERS

This plat has been examined and was approved on the *6th* day of *May*, 19*55*, by the Washtenaw County Board of Road Commissioners.

James C. Hendley
James C. Hendley (Chairman)
Raymond L. Koch
Raymond L. Koch (Member)
H. L. Frisinger
H. L. Frisinger (Member)

COPY

Register's Office

Washtenaw County,) ss.

Plat of *Northern Hills, etc., Dearborn, Mich.*

was Recorded this *25* day of

May, A.D., 19*55* at *9:23* o'clock

4 M. in Liber *77* of *Plat*

on Page *36*

Bernard J. Youngblood
Notary of Book

Thereby certify this copy is a true copy of map of plat forwarded to the Register of Deeds for recording.

Date *May 23 1955*

Filed in Auditor's Records Dept.

Date *May 27 1955*

Examined and approved

Date *May 23 1955*

Victor J. Jorgensen
Auditor General

D. J. Mackey
Plat Engineer