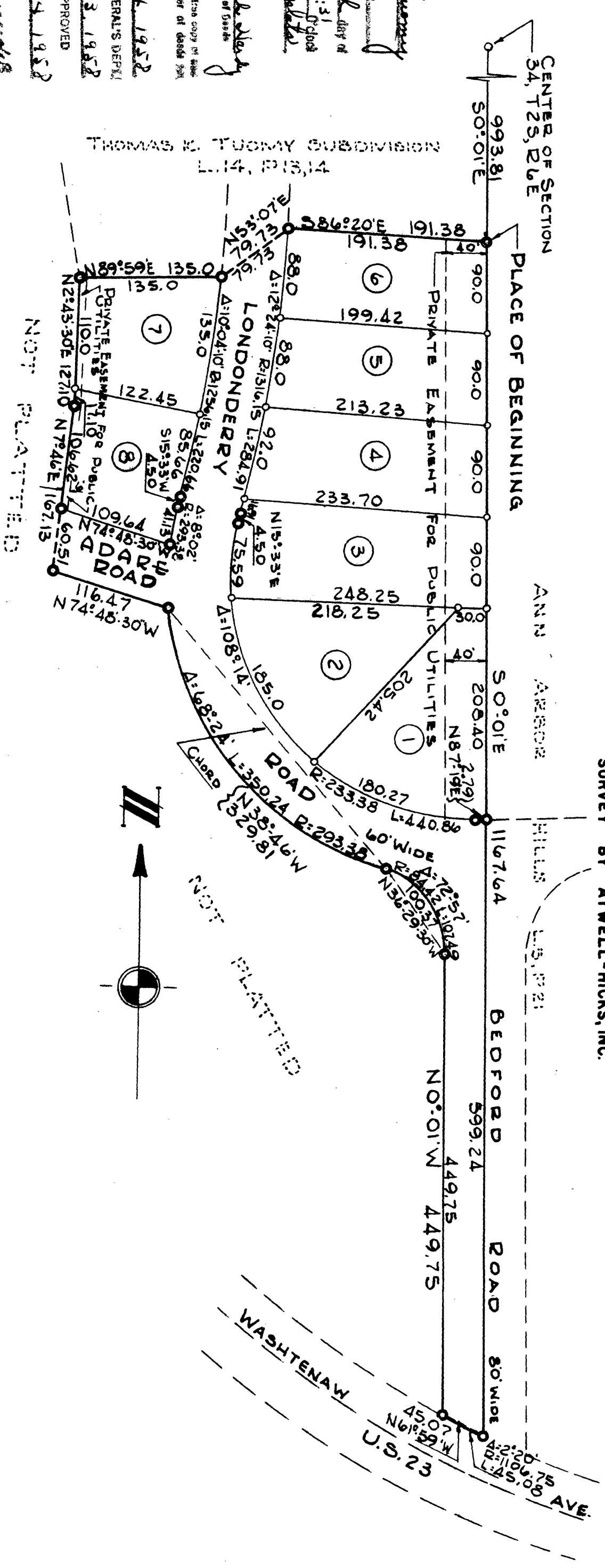


KATHRYN G. TUOMY SUBDIVISION
 A PART OF THE SW 1/4 OF SECTION 34, T25, R6E,
 CITY OF ANN ARBOR, WASHTENAW COUNTY,
 MICHIGAN.

ALL DIMENSIONS IN FEET AND DECIMALS THEREOF
 ALL CURVES ARE ARC LENGTHS
 SURVEY BY ATWELL-HICKS, INC.



Register's Office
 Washtenaw County
 Part of Kathryn G. Tuomy
 was recorded this 25th day of
 November, 1958, at 2:52 p.m.
 in the Office of the Register of Deeds
 at Ann Arbor, Michigan.
 Book 37
 Page 31
 Certified to be a true and correct
 copy of the original as the same
 appears in the Register of Deeds
 Office.
 1. Number certify this copy is a true copy of the
 original as the same appears in the Register of Deeds
 Office.
 Dated November 24, 1958
 FILED IN AUDITOR GENERAL'S DEPT.
 Dated December 3, 1958
 EXAMINED AND APPROVED
 Dated December 24, 1958
 Fred J. Loofer
 Register of Deeds

DEDICATION

KNOW ALL MEN BY THESE PRESENTS, that we Cornelius W. Tuomy, a single man and Kathryn G. Tuomy, a single woman, as proprietors, have caused the land embraced in the annexed plat to be surveyed, laid out and platted, to be known as KATHRYN G. TUOMY SUBDIVISION a part of the SW 1/4 of Section 34, T25, R6E, City of Ann Arbor, Washtenaw County, Michigan and that the roads as shown on said plat are hereby dedicated to the use of the public.

Signed and Sealed
 in the Presence of:
 Gertrude Staeb
 (Witness)
 Ella F. Pardon
 (Witness)

Cornelius W. Tuomy
 Cornelius W. Tuomy
Kathryn G. Tuomy
 Kathryn G. Tuomy

ACKNOWLEDGMENT

STATE OF MICHIGAN)
 County of Washtenaw) ss.
 On this 19th day of Nov. 1958, before me, a Notary Public in and for said county, personally came the above named Cornelius W. Tuomy and Kathryn G. Tuomy known to me to be the persons who executed the above dedication, and acknowledged the same to be their free act and deed.

Ella F. Pardon
 Ella F. Pardon
 Notary Public, Washtenaw County
 My Commission expires May 11, 1961

DESCRIPTION OF LAND PLATTED

The land embraced in the annexed plat of KATHRYN G. TUOMY SUBDIVISION a part of the SW 1/4 of Section 34, T25, R6E, City of Ann Arbor, Washtenaw County, Michigan is described as follows:

Commencing at the center of Section 34, T25, R6E, Ann Arbor Township, Washtenaw County, Michigan; thence along the North & South 1/2 line of said section S 0°-01'E 993.81 feet for a PLACE OF BEGINNING; thence continuing along the North & South 1/2 line of said section S 0°-01'E 1167.64 feet; thence 45.05 feet in the arc of a circular curve concave to the northeast, radius 1106.75 feet; thence 107.49 feet 45.07 feet; thence N 0°-01'W 449.75 feet; thence 107.49 feet in the arc of a circular curve concave to the southwest, radius 84.42 feet; thence N 36°-29'-30"W 100.37 feet; thence 50.24 feet in the arc of a circular curve concave to the northeast, radius 293.38 feet; thence N 38°-46'-01"W 329.81 feet; thence N 74°-48'-30"W 116.47 feet; thence N 7°-46'E 167.13 feet; thence N 2°-43'-30"E 127.10 feet; thence N 89°-59'E 135.0 feet; thence N 53°-07'E 79.73 feet; thence S 86°-20'E 191.38 feet to the place of beginning, containing 8 lots numbered 1 through 8 inclusive.

SURVEYOR'S CERTIFICATE

I hereby certify that the plat hereon delineated is a correct one and that permanent metal monuments consisting of bars not less than one-half inch in diameter and 30 inches in length, or shorter bars of not less than one-half inch in diameter lapped over each other at least 6 inches with an overall length of not less than 36 inches, encased in a concrete cylinder at least 4 inches in diameter and 30 inches in depth have been placed at points marked thus (⊙) as shown at all angles in the boundaries of the land platted, at all the intersections of lines of streets, and at the intersections of lines of streets with the boundaries of the plat as shown on said plat.

Robert J. Lagor
 Robert J. Lagor
 Registered Land Surveyor #4998

CERTIFICATE OF APPROVAL BY THE CITY PLANNING COMMISSION

This plat was approved by the Planning Commission of the City of Ann Arbor Michigan at a meeting held on the 10th day of 10 Nov 1958.

Paul G. Kasper
 Paul G. Kasper (Chairman)
Leo P. Meyers
 Leo P. Meyers (Secretary)

MUNICIPAL APPROVAL

This plat was approved by the COMMON COUNCIL of the City of Ann Arbor Michigan at a meeting held on the 10th day of 10 Nov 1958.

Fred J. Loofer
 Fred J. Loofer (Clerk)

CITY CLERK'S CERTIFICATE

Office of City Clerk, City of Ann Arbor
 I hereby certify, that the width and depth of lots shown on this plat are in compliance with rules and regulation of the City of Ann Arbor and the requirements as to width and depth of Sec. 30 of Act 172, Public Acts of 1929 as amended by Act 186 Public Acts of 1954.

Fred J. Loofer
 Fred J. Loofer (Clerk)

APPROVED 11-19-58
 DATE
John C. Mankie
 JOHN C. MANKIE
 STATE HIGHWAY COMMISSIONER

COUNTY TREASURER'S CERTIFICATE

Office of County Treasurer, Washtenaw County
 I hereby certify, that there are no tax liens or titles held by the State on the lands described hereon, and that there are no tax liens or titles held by individuals on said lands, for the five years preceding the 30th day of October, 1958, and that the taxes for said period of five years are all paid, as shown by the records of this office.

W. F. Verner
 W. F. Verner (County Treasurer)

CERTIFICATE AS TO STATE TRUNK LINE OR FEDERAL AID ROADS

We hereby certify that said plat appears to include land located on a state trunk line or federal aid road.

Patricia Newkirk Hardy
 Patricia Newkirk Hardy (County Register of Deeds)

Marvin Remp
 Marvin Remp (Auditor)

C. C. Chandler
 C. C. Chandler (Auditor)

Herbert G. Loeffler
 Herbert G. Loeffler (Auditor)

APPROVAL BY COUNTY PLAT BOARD

This plat was approved on the 11th day of 11 Nov 1958 by the Washtenaw County Plat Board.

Patricia Newkirk Hardy
 Patricia Newkirk Hardy (County Register of Deeds)

J. Martin Remp
 J. Martin Remp (Auditor)

Herbert G. Loeffler
 Herbert G. Loeffler (Auditor)

C. C. Chandler
 C. C. Chandler (Auditor)