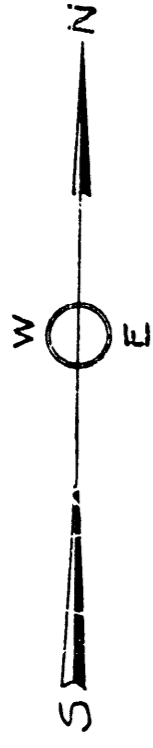
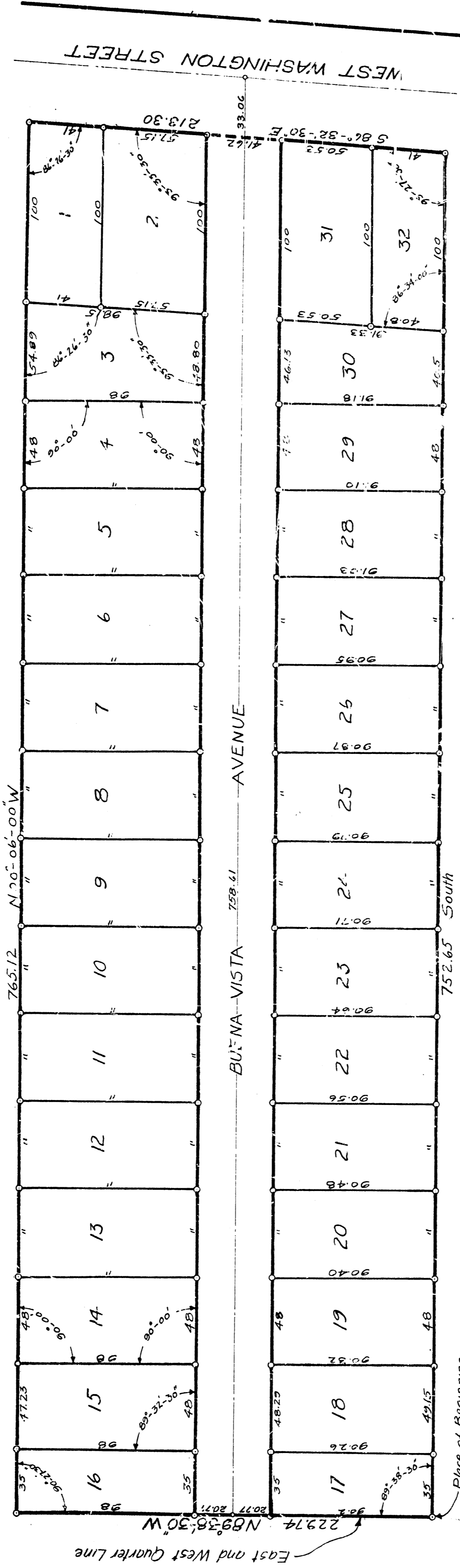


ORIGINAL PLAT OF
JOHN J. SAUER'S ADDITION
 TO THE
 CITY OF ANN ARBOR
 WASHTENAW COUNTY, MICHIGAN.

SCALE: ONE INCH = FORTY FEET



NOTE: All dimensions are given in feet and decimals thereof.



KNOW ALL MEN BY THESE PRESENTS That we John J. Sauer and Mary C. Sauer his wife, Thomas Blair and M. Edna Blair his wife,

as proprietors, have caused the land embraced in the annexed plat to be surveyed, laid out and platted to be known as "JOHN J. SAUER'S ADDITION" to the City of Ann Arbor, Washtenaw County, Michigan, and that the streets as shown on said plat are hereby dedicated to the use of the public.

Signed and Sealed in Presence of
John J. Sauer (U.S.)
Mary C. Sauer (U.S.)
Thomas Blair (U.S.)
M. Edna Blair (U.S.)

STATE OF MICHIGAN,
 County of Washtenaw

On this 16th day of Dec. 1923 before me, a Notary Public in and for said county, personally came the above named John J. Sauer and Mary C. Sauer his wife, Thomas Blair and M. Edna Blair his wife,

known to me to be the persons who executed the above dedication and acknowledged the same to be their free act and deed.

My Commission expires March 1, 1927
R. E. Rusk
 Notary Public Washtenaw Co., Mich.

DESCRIPTION

The land embraced in the annexed plat of JOHN J. SAUER'S ADDITION to the City of Ann Arbor, Washtenaw County, Michigan is described as follows: Commencing at a point in the East and West Quarter line 330 feet west of the East Quarter post of Section 30, City of Ann Arbor, Washtenaw County, Michigan, thence N89°38'30W 229.74 feet along said East and West Quarter line thence N00°06'00"W 752.65 feet to the south line of Washington Street, thence S86°52'30"E 213.30 feet, thence South 752.65 feet to the place of beginning.

TAX CERTIFICATE.

I hereby certify that there are 320 tax liens or files held by the State on the lands described above, and that there are 219 tax liens or files held by individuals on said lands, for the five years preceding the date of Dec. 1923, and that the taxes for said period of five years respectively - paid, as shown by the records of this office.

Marjory E. B. Leese
 County Treasurer

CERTIFICATE OF APPROVAL
 BY THE BOARD OF COUNTY AUDITORS

Approved by the Board of County Auditors of Washtenaw County, Michigan, this 5th day of December, 1923

W. H. H. H. H.
 Wm. H. H. H. H.

SURVEYOR'S CERTIFICATE

I hereby certify that the plat hereon delineated is a correct one, and that permanent monuments, consisting of iron pipes one half inch or more in diameter and in any inches or more in length have been blanded at points marked on as herein shown at all angles in the boundaries of the land platted and at all intersections of streets.

H. A. Ottwell
 Registered Civil Engineer

CERTIFICATE OF APPROVAL
 BY THE BOARD OF PUBLIC WORKS

This plat was approved by the Board of Public Works of the City of Ann Arbor, Washtenaw County, Michigan at a meeting held April 28, 1924.

CERTIFICATE OF APPROVAL
 BY THE COMMON COUNCIL

This plat was approved by the Common Council of the City of Ann Arbor, Washtenaw County, Michigan at a meeting held June 20, 1924.

V. J. Pyper
 Clerk

RECORDED BY: LSL
 INDEXED BY: LSL
 City of Ann Arbor A. D. 1924
 at 12:30 o'clock P. M. on the 15th day of June
 L. S. L. of Washtenaw County, Mich.
R. E. Rusk
 Notary Public