

7-11
10-12-48

DEDICATION

KNOW ALL MEN BY THESE PRESENTS, that we, John J. Jennings and V. Frances Jennings, his wife, and Donald E. Francke and Maxine M. Francke, his wife

as proprietors, have caused the land embraced in the annexed plat to be surveyed, laid out and platted, to be known as JENNING'S NEWPORT HEIGHTS Section 18, Township 2 south, Range 6 east, Ann Arbor Township, Washtenaw County, Michigan

and that the streets as shown on said plat are hereby dedicated to the use of the public.

Signed and Sealed in the Presence of:

RALPH D. WARNER (Witness) John J. Jennings (L.S.)
VICTOR H. LAKE JR. (Witness) V. Frances Jennings (L.S.)
Donald E. Francke (L.S.)
Maxine M. Francke (L.S.)

ACKNOWLEDGMENT

STATE OF MICHIGAN
County of Washtenaw

On this 12th day of August, 1948, before me, a Notary Public in and for said County, personally came the above named John J. Jennings and V. Frances Jennings, his wife, Donald E. Francke and Maxine M. Francke, his wife

known to me to be the persons who executed the above dedication, and acknowledged the same to be their free act and deed.

Victor H. Lake Jr.
Notary Public, Washtenaw County
My Commission expires 12/31/49

DESCRIPTION OF LAND PLATTED

The land embraced in the annexed plat of JENNING'S NEWPORT HEIGHTS, located in the southwest quarter of the southeast quarter of Section 18, Town 2 South, Range 6 East, Ann Arbor Township Washtenaw County, Michigan

is described as follows:
Commencing at the south quarter post of said Section 18; thence N 89° 06' 12" E in the section line 1088.30 feet to a concrete monument for a point of beginning; Thence continuing N 89° 06' 12" E in the section line 243 feet to a concrete monument in the centerline of Newport Road; thence N 1° 21' 47" W in the centerline of Newport Road 1334.64 feet to a concrete monument; thence S 88° 40' 10" W 498 feet to a concrete monument; thence S 5° 58' 13" W 152 feet to a concrete monument; thence westerly in the arc of a curve to the left having a radius of 121.21 feet to a concrete monument to which the long chord bears N 85° 47' 13" W 121.39 feet; thence S 1° 37' 37" E 608.91 feet to a concrete monument; thence N 89° 06' 12" E 142.45 feet to a concrete monument; thence in the arc of a circular curve to the left having a radius of 110.31 feet and a central angle of 45° a distance of 86.64 feet to a concrete monument to which the long chord bears N 66° 36' 12" E 84.43; thence S 45° 53' 48" E 66 feet to a concrete monument; thence N 44° 06' 12" E 66 feet to a concrete monument; thence in the arc of a circular curve to the right having a radius of 87.71 feet and a central angle of 45° a distance of 68.89 feet to a concrete monument to which the long chord bears N 66° 36' 12" E 67.13 feet; thence S 1° 21' 47" E 174 feet to a concrete monument; thence in the arc of a circular curve to the right having a radius of 323.35 feet and a central angle of 24° 49' 14", a distance of 140.08 feet to a concrete monument to which the long chord bears S 11° 02' 50" W 138.98 feet; thence N 89° 06' 12" E 49.88 feet; thence S 1° 21' 47" E 330 feet to the point of beginning.

SURVEYOR'S CERTIFICATE

I hereby certify that the plat hereon delineated is a correct one and that permanent metal monuments consisting of bars not less than one-half inch in diameter and 48 inches in length, or shorter bars of not less than one-half inch in diameter lapped over each other at least 6 inches with an over-all length of not less than 48 inches, encased in a concrete cylinder at least 4 inches in diameter and 48 inches in depth have been placed at points marked thus (O) as thereon shown at all angles in the boundaries of the land platted, at all the intersections of streets, intersections of alleys, or of streets and alleys, and at the intersections of streets and alleys with the boundaries of the plat as shown on said plat.

Harry W. Goodwin
Registered Land Surveyor
No. 5434

APPROVAL BY BOARD OF COUNTY ROAD COMMISSIONERS

This plat has been examined and was approved on the 12th day of August, 1948, by the County Board of Road Commissioners.

George Gill (Chairman)
James C. Hepdley (Member)
H. L. Frisinger (Member)

APPROVAL BY COUNTY PLANNING COMMISSION

This plat has been examined and was approved by the County Planning Commission at a meeting on the 12th day of August, 1948.

John W. Hyde (Chairman)
Kenneth L. Hallenbeck
George D. Hurrell

MUNICIPAL APPROVAL

This plat was approved by the Ann Arbor Township Board of the Ann Arbor Township of Ann Arbor at a meeting held August 15, 1948
Ray F. Wuerster (Clerk)

APPROVAL BY BOARD OF COUNTY AUDITORS

Approved by the Board of County Auditors of Washtenaw County, Michigan, this 12th day of August, 1948
J. Martin Remp (Chairman)
L. O. Cushing
John E. Wajz

COUNTY TREASURER'S CERTIFICATE

Office of County Treasurer, Washtenaw County.
I hereby certify that there are no tax liens or titles held by the State on the lands described hereon, and that there are no tax liens or titles held by individuals on said lands, for the five years preceding the 12th day of August, 1948, and that the taxes for said period of five years are all paid, as shown by the records of this office, except
This certificate does not apply to taxes, if any, now in process of collection by town, ship, city or village collecting officers.

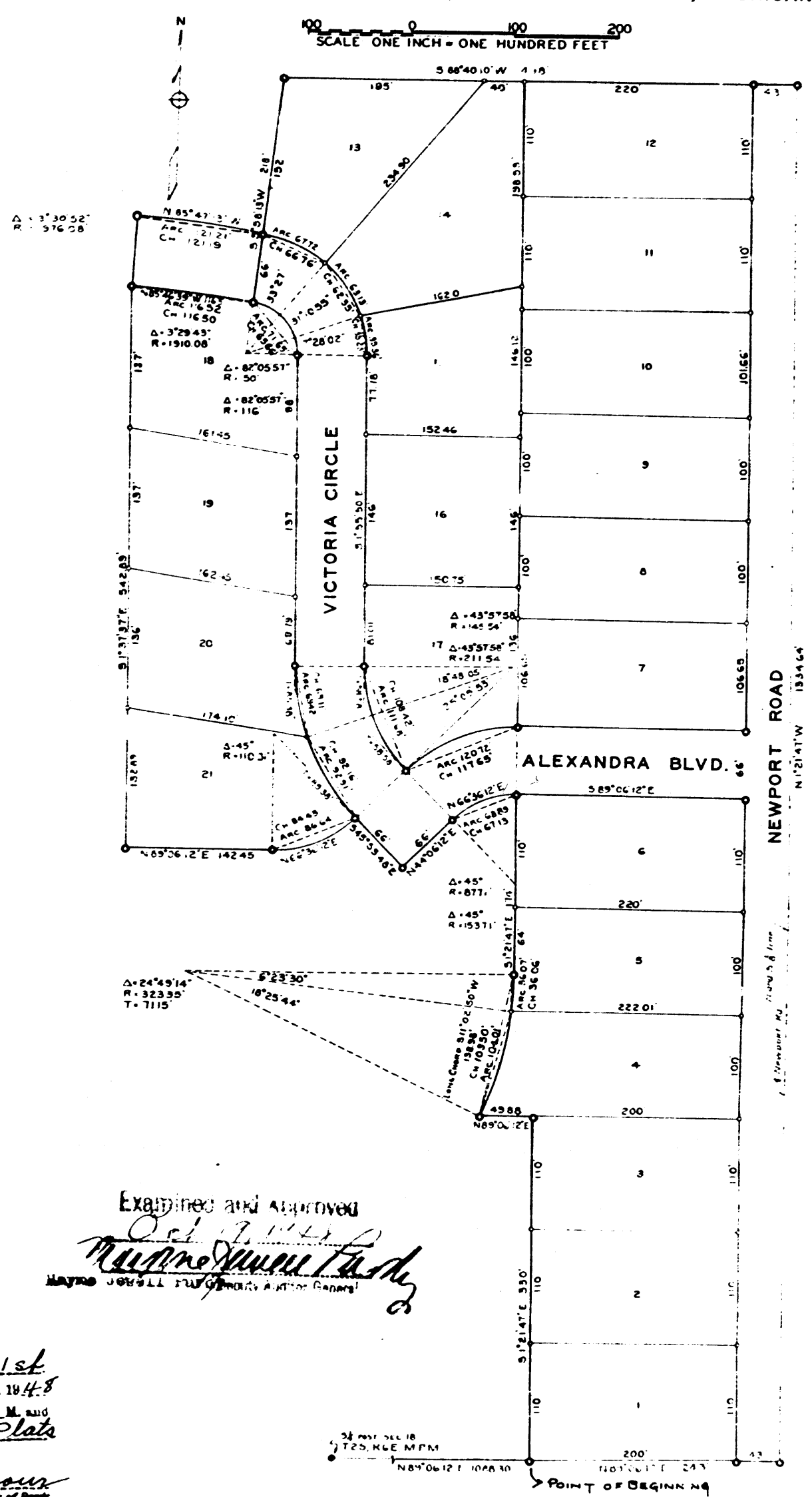
Clyde D. Fleming (County Treasurer)

REGISTER OF DEEDS

Washtenaw County
RECEIVED for Record, the 21st day of October, A. D. 1948
at 8:30 o'clock A. M. and recorded in Liber 10 of Plate 56
in page 56
Allan A. Seymour
Register of Deeds

Restrictions agreement: Liber 513 page 226.

ORIGINAL
JENNING'S NEWPORT HEIGHTS
PART OF SOUTHWEST QUARTER OF SOUTHEAST QUARTER OF SECTION 18,
TOWN 2 SOUTH, RANGE 6 EAST, WASHTENAW COUNTY, MICHIGAN



Examined and approved
Raymond J. ...
Mayor