

RECEIVED FOR RECORD  
MAY 1 10 28 AM '63  
PATRICIA NEWKIRK HARDY  
REGISTER OF DEEDS  
WASHTENAW COUNTY, MICH.

RECEIVED FOR RECORD  
MAY 1 10 28 AM '63  
PATRICIA NEWKIRK HARDY  
REGISTER OF DEEDS  
WASHTENAW COUNTY, MICH.

ORIGINAL

### HURON RIVER ACRES NO. 2

A SUBDIVISION OF PART OF THE NE 1/4 OF SECTION 18, T25, R6E, ANN ARBOR TOWNSHIP, WASHTENAW COUNTY, MICHIGAN



ALL DIMENSIONS IN FEET AND DECIMALS THEREOF  
ALL DIMENSIONS ON CURVES ARE ARC LENGTHS  
SURVEY AND DESIGN BY ATWELL-HICKS, INC.

EXAMINED AND APPROVED

Date April 29 1963

*Billie S. Farnum*  
BILLIE S. FARNUM  
AUDITOR GENERAL  
By *Richard E. Lomar*  
Richard E. Lomar - Plat Engineer

#### DEDICATION

KNOW ALL MEN BY THESE PRESENTS, that we, Arbor Heights Building Corporation, a Michigan Corporation, by S. Brooks Barron, Treasurer, and Thomas A. Gallagher, President, as proprietors, have caused the land embraced in the annexed plat to be surveyed, laid out and platted to be known as HURON RIVER ACRES NO. 2 a subdivision of part of the NE 1/4 of Section 18, T25, R6E, Ann Arbor Township, Washtenaw County, Michigan, and that the Road and Lane as shown on said plat are hereby dedicated to the use of the public, and the easements indicated on said plat are not dedicated to the public but reserved for public utilities and any other use designated hereon and no permanent structures are to be located within said easement.

Signed in the Presence of:

*Robert K. Rutkowski*  
ROBERT KUTKOWSKI, Witness  
*Elvie R. Adcox*  
ELVIE R. ADcox, Witness

THE ARBOR HEIGHTS BUILDING CORPORATION

*S. Brooks Barron*  
S. Brooks Barron, Treasurer  
*Thomas A. Gallagher*  
Thomas A. Gallagher, President

#### DESCRIPTION OF LAND PLATED

The land embraced in the annexed plat of HURON RIVER ACRES NO. 2 a subdivision of part of the NE 1/4 of Section 18, T25, R6E, Ann Arbor Township, Washtenaw County, Michigan is described as follows:

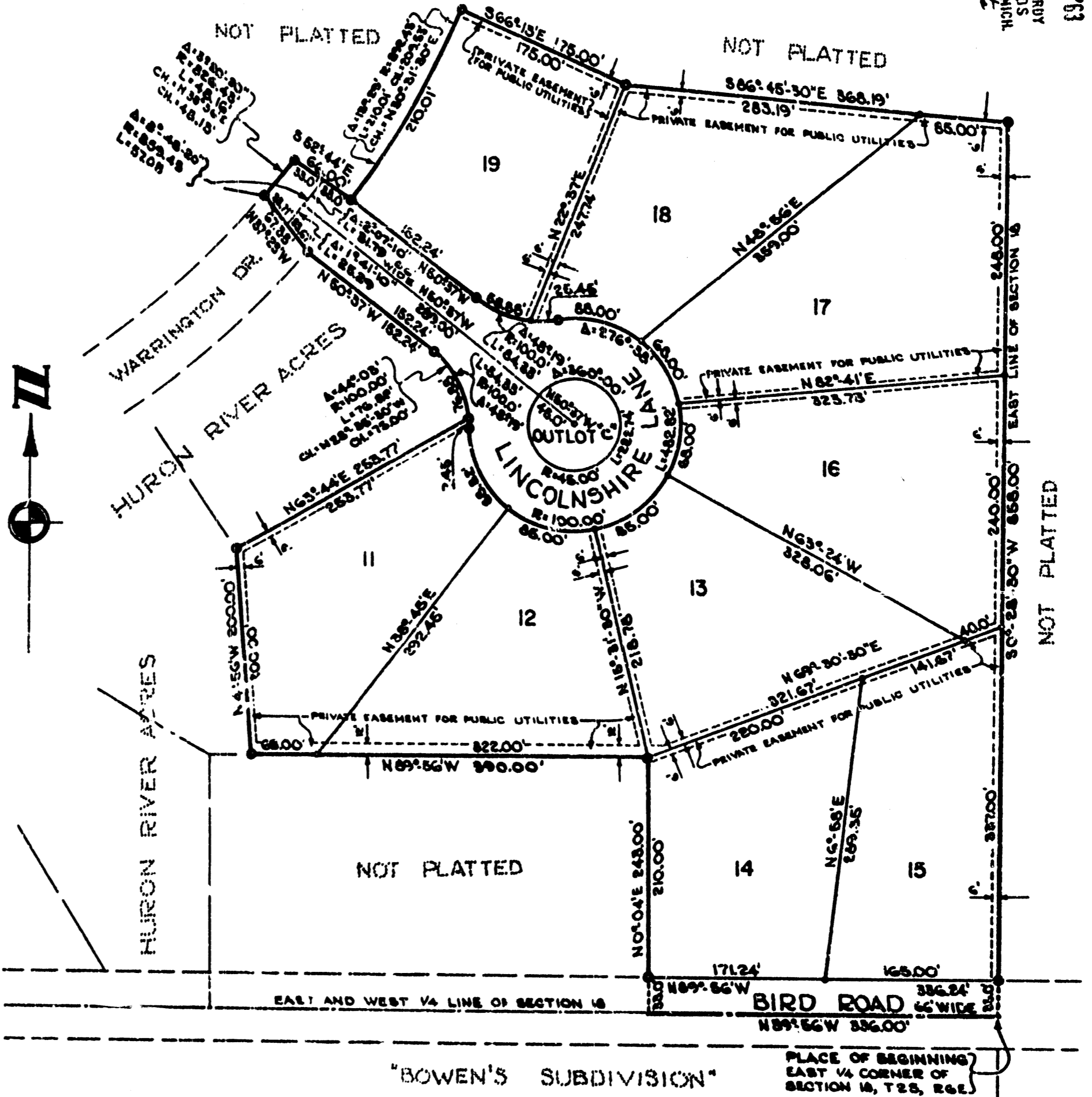
Beginning at the East 1/4 corner of Section 18, T25, R6E, Ann Arbor Township, Washtenaw County, Michigan; thence along the East and West 1/4 line of said section, N 89°-56' W 336.00 feet; thence N 0°-04' E 243.00 feet; thence N 89°-56' W 390.00 feet; thence N 4°-56' W 200.00 feet; thence N 63°-44' E 253.77 feet; thence 76.88 feet along the arc of a circular curve concave to the Southwest, radius 100.00 feet, chord N 28°-35'-30" W 75.00 feet; thence S 30°-37' W 152.24 feet; thence N 37°-23' W 67.38 feet; thence 48.16 feet along the arc of a circular curve concave to the Northwest, radius 826.43 feet, chord N 38°-56' E 46.13 feet; thence S 52°-44' E 66.00 feet; thence 210.01 feet along the arc of a circular curve concave to the Northwest, radius 892.43 feet, chord N 50°-31'-30" E 209.53 feet; thence S 66°-13' E 175.00 feet; thence S 86°-45'-30" E 368.19 feet; thence along the east line of said Section, S 0°-28'-30" W 858.00 feet to the Place of Beginning, containing 9 lots numbered 11 through 19 inclusive and 1 Outlot lettered "C".

#### ACKNOWLEDGMENT

STATE OF MICHIGAN )  
County of Washtenaw )

On this 29th day of April, A.D., 1963, before me, a Notary Public, in and for said county appeared S. Brooks Barron and Thomas A. Gallagher to me personally known, who being each by me duly sworn, did say that they are the Treasurer and President respectively of the Arbor Heights Building Corporation and that said instrument was signed in behalf of said corporation by authority of its Board of Directors and the said S. Brooks Barron and Thomas A. Gallagher acknowledged said instrument to be the free act and deed of said corporation.

*Elvie R. Adcox*  
Notary Public, Washtenaw County, Michigan  
My Commission expires July 11, 1968.



#### APPROVAL BY COUNTY PLANNING COMMISSION

This plat was approved by the Washtenaw County Planning Commission at a meeting held on the 11th day of March, 1963.

*Carl E. Mast*  
Carl E. Mast (Chairman)  
*William G. Hayes*  
William G. Hayes (Secretary)  
*Robert D. Carpenter*  
Robert D. Carpenter (Director)

#### CERTIFICATE OF MUNICIPAL APPROVAL

This plat was approved by the Township Board of the Township of Ann Arbor at a meeting held March 11, 1963 and is in compliance with Section 19a and that the width of lots conforms with requirements of Section 30, Act 172, of 1929 as amended.

*Ray F. Warster*  
Ray F. Warster, Clerk

#### SURVEYOR'S CERTIFICATE

I hereby certify that the plat hereon delineated is a correct one and that permanent metal monuments consisting of bars not less than one-half inch in diameter and 36 inches in length, or shorter bars of not less than one-half inch in diameter lapped over each other at least 6 inches with an over-all length of not less than 36 inches, encased in a concrete cylinder at least 4 inches in diameter and 36 inches in depth have been placed at points marked thus (C) as thereon shown at all angles in the boundaries of the land platted, at all the intersections of streets, intersections of alleys, or of streets and alleys, and at the intersection of streets and alleys with the boundaries of the plat as shown on said plat.

*Howard W. T. ...*  
Registered Surveyor No. 12932

#### APPROVAL BY BOARD OF COUNTY ROAD COMMISSIONERS

This plat has been examined and was approved on the 27th day of March, 1963, by the Washtenaw County Board of Road Commissioners.

*Raymond L. Koch*  
Raymond L. Koch (Chairman)  
*H. L. Frislinger*  
H. L. Frislinger (Member)  
*Don A. Weir*  
Don A. Weir (Member)

#### COUNTY TREASURER'S CERTIFICATE

Office of County Treasurer, Washtenaw County

I hereby certify, that there are no tax liens or titles held by the State on the lands described hereon, and that there are no tax liens or titles held by individuals on said lands for the five years preceding the 29th day of April, 1963, and that the taxes for said period of five years are all paid, as shown by the records of this office.

This certificate does not apply to taxes, if any, now in process of collection by township, city or village collecting officer.

*Sylvester A. Leonard*  
Sylvester A. Leonard,  
County Treasurer

#### APPROVAL BY COUNTY PLAT BOARD

This plat was approved on the 8th day of April, 1963 by the Washtenaw County Plat Board.

*Patricia Newkirk Hardy*  
Patricia Newkirk Hardy  
County Register of Deeds  
*John H. Flook*  
John H. Flook  
County Drain Commissioner  
*J. Martin Rempp*  
J. Martin Rempp  
Auditor  
*Herbert G. Loeffler*  
Herbert G. Loeffler  
Auditor  
*John P. Cook*  
John P. Cook  
Auditor

Patricia Newkirk Hardy, Register of Deeds, Washtenaw County, Michigan, File No. 1002, Page 160, Date Filed 10/25/63, Page 170, Date Filed 10/25/63, Page 170, Date Filed 10/25/63.

Doc. No. 1308 Page 170  
Approved for Record by Clerk of Court, File No. 1002, Page 160, Date Filed 10/25/63, Page 170, Date Filed 10/25/63.