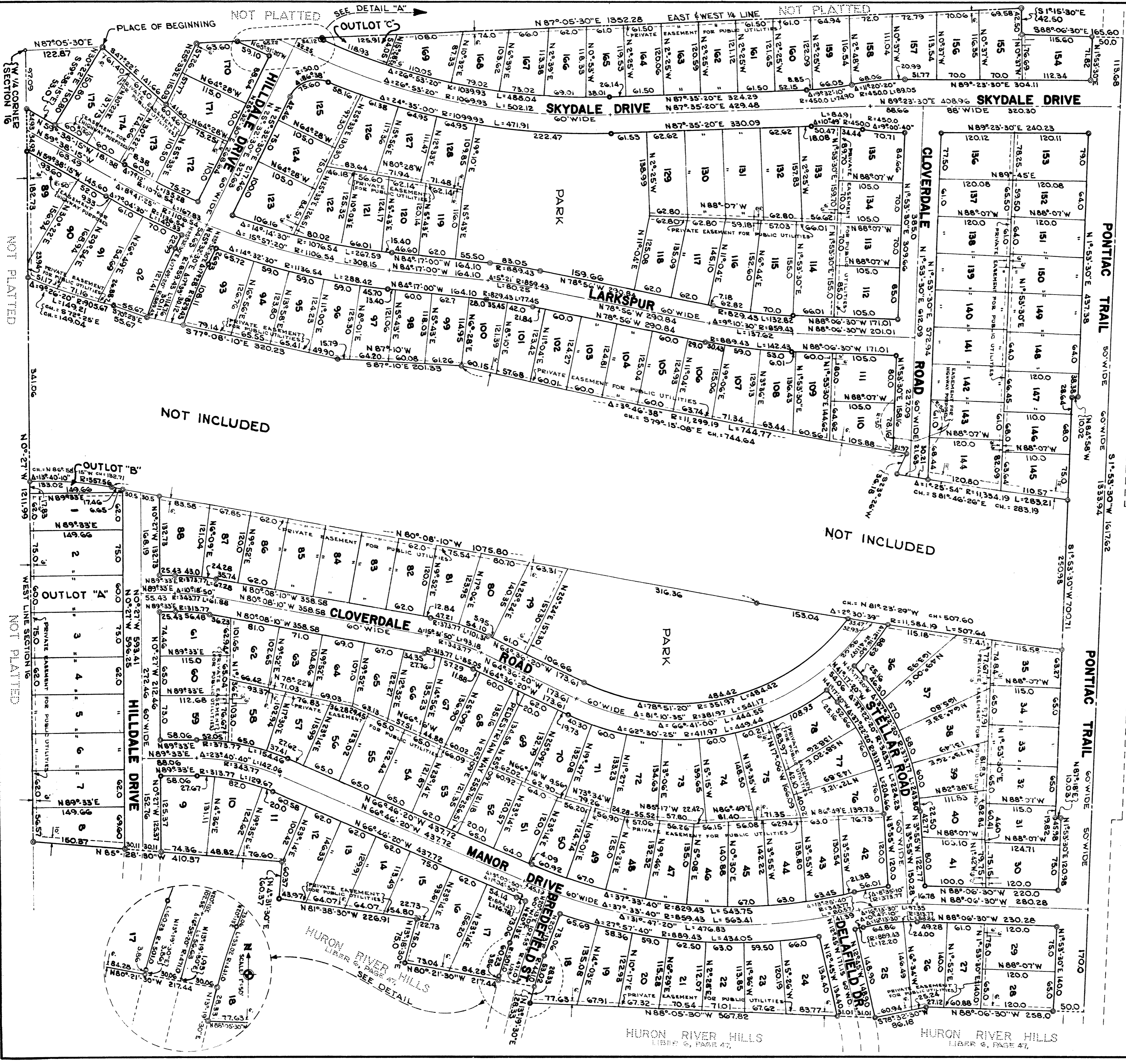


SCALE: 1" = 100'  
ALL DIMENSIONS IN FEET AND DECIMALS THEREOF  
ALL DIMENSIONS ON CURVES ARE ARC LENGTHS  
SURVEY BY ATWELL-HICKS, INC.

# HURON HIGHLANDS

SHEET 1 OF 2



HURON RIVER HILLS  
LIBER 6, PAGE 47

HURON RIVER HILLS  
LIBER 6, PAGE 47

### HURON HIGHLANDS

A SUBDIVISION OF PART OF THE SW 1/4  
OF SECTION 16, T2S, R6E, CITY OF ANN  
ARBOR, WASHTENAW COUNTY, MICHIGAN



SCALE: 1" = 100'

ALL DIMENSIONS IN FEET AND DECIMALS THEREOF  
ALL DIMENSIONS ON CURVES ARE ARC LENGTHS  
SURVEY BY ATWELL-HICKS, INC.

#### DEDICATION

KNOW ALL MEN BY THESE PRESENTS, that we, Neil O. Staebler, doing business under the assumed name of Staebler & Son, Burnette Staebler, his wife, and Edna J. Burke as proprietors, have caused the land embraced in the annexed plat to be surveyed, laid out and platted to be known as HURON HIGHLANDS a Subdivision of part of the SW 1/4 of Section 16, T2S, R6E, City of Ann Arbor, Washtenaw County, Michigan and that the Roads, Drives, Street, Trail, Pedestrian Way, and Parks as shown on said plat are hereby dedicated to the use of the public.

Signed in the Presence of:

*Hugh E. Wilson* Witness *Neil O. Staebler*  
*Eleanor Kilpatrick* Witness *Burnette Staebler*  
*Edna J. Burke*  
Edna J. Burke

#### ACKNOWLEDGMENT

STATE OF MICHIGAN )  
County of *Washtenaw* ) ss.

On this *27th* day of *December*, A.D. 19*60*, before me, a Notary Public in and for said County, personally came Neil O. Staebler, Burnette Staebler and Edna J. Burke, known to me to be the persons who executed the above dedication and acknowledged the same to be their free act and deed.

*Eleanor Kilpatrick*  
Eleanor Kilpatrick  
Notary Public, *Washtenaw* County, Michigan

My Commission expires *March 14, 1960*

#### DESCRIPTION OF LAND PLATTED

The land embraced in the annexed plat of HURON HIGHLANDS a Subdivision of part of the SW 1/4 of Section 16, T2S, R6E, City of Ann Arbor, Washtenaw County, Michigan is described as follows:

Commencing at the West 1/4 corner of Section 16, T2S, R6E, City of Ann Arbor, Washtenaw County, Michigan; thence N 87°-05'-30" E 122.87 feet for a PLACE OF BEGINNING; thence S 47°-22' E 141.66 feet; thence N 25°-33' E 115.03 feet; thence N 87°-05'-30" E 1352.28 feet; thence S 1°-15'-30" E 42.50 feet; thence S 88°-06'-30" E 165.60 feet; thence S 1°-53'-30" W 1617.62 feet; thence N 88°-06'-30" W 258.0 feet; thence S 78°-32'-30" W 86.18 feet; thence N 88°-05'-30" W 567.82 feet; thence N 13°-19'-30" E 28.33 feet; thence N 80°-21'-30" W 217.44 feet; thence N 13°-18'-30" E 75.0 feet; thence N 81°-38'-30" W 226.91 feet; thence N 4°-31'-30" E 60.37 feet; thence N 85°-28'-30" W 40.37 feet; thence N 0°-27' W 1211.99 feet; thence S 59°-38'-15" E 53.0 feet; thence N 30°-22' E 150.80 feet to the Place of Beginning, containing 175 lots numbered 1 through 175 inclusive and 3 outlots lettered A through C inclusive and two Parks. (continued)

#### SURVEYOR'S CERTIFICATE

I hereby certify that the plat hereon delineated is a correct one and that permanent metal monuments consisting of bars not less than one-half inch in diameter and 36 inches in length, or shorter bars of not less than one-half inch in diameter lapped over each other at least 6 inches with an over-all length of not less than 36 inches, encased in a concrete cylinder at least 4 inches in diameter and 36 inches in depth have been placed at points marked thus (⊙) as thereon shown at all angles in the boundaries of the land platted, at all the intersections of lines of streets, and at the intersections of lines of streets with the boundaries of the plat as shown on said plat.

*Robert J. Jagow*  
Robert J. Jagow  
Registered Land Surveyor #6998

#### DESCRIPTION OF LAND PLATTED (continued)

Excepting therefrom a parcel of land described as follows: Commencing at the West 1/4 corner of Section 16, T2S, R6E, City of Ann Arbor, Washtenaw County, Michigan; thence S 0°-27' E 373.62 feet for a PLACE OF BEGINNING; thence 149.21 feet in the arc of a circular curve concave to the North radius 905.67 feet, chord S 72°-25' E 149.04 feet; thence S 70°-23' E 55.67 feet; thence S 77°-08'-10" E 320.23 feet; thence S 87°-10' E 201.33 feet; thence 744.77 feet in the arc of a circular curve concave to the North, radius 11,299.19 feet, chord S 79°-15'-08" E 744.64 feet; thence S 23°-26' W 36.18 feet; thence 283.21 feet in the arc of a circular curve concave to the North, radius 11,334.19 feet, chord S 81°-46'-26" E 283.19 feet; thence S 1°-53'-30" W 250.98 feet; thence 507.64 feet in the arc of a circular curve concave to the North, radius 11,584.19 feet, chord N 81°-23'-29" W 507.60 feet; thence N 80°-08'-10" W 1075.80 feet; thence 133.02 feet in the arc of a circular curve concave to the South, radius 557.56 feet, chord N 86°-58'-15" W 132.71 feet; thence N 0°-27' W 341.06 feet to the Place of Beginning.

I hereby certify that copies of this plat have been filed for record in the Register of Deeds for recording.  
*October 27, 1960*  
FILED IN REGISTER OF DEEDS' OFFICE  
*October 31, 1960*  
EXAMINED AND APPROVED  
*October 27, 1960*  
*Otis M. Smith*  
OTIS M. SMITH  
AUDITOR GENERAL  
By *D. L. MacGregor*  
D. L. MacGregor, Notary Public

#### CERTIFICATE OF APPROVAL BY THE CITY PLANNING COMMISSION

This plat was approved by the Planning Commission of the City of Ann Arbor, Michigan at a meeting held on the *12th* day of *January*, 19*60*.

*Paul W. Coston*  
Paul W. Coston Chairman  
*John D. Raul*  
John D. Raul Secretary

#### CERTIFICATE OF MUNICIPAL APPROVAL

This plat was approved by the Common Council of the City of Ann Arbor at a meeting held *May 6, 1960* and that the width of lots is in compliance with requirements of Section 30, Act 172, of 1929, as amended.

*Fred J. Looker*  
Fred J. Looker, Clerk

#### COUNTY TREASURER'S CERTIFICATE Office of County Treasurer, Washtenaw County

I hereby certify, that there are no tax liens or titles held by the State on the lands described hereon, and that there are no tax liens or titles held by individuals on said lands for the five years preceding the *7th* day of *September*, 19*60*, and that the taxes for said period of five years are all paid, as shown by the records of this office.

This certificate does not apply to taxes, if any, now in process of collection by township, city or village collecting officer.

*W.F. Verner*  
W.F. Verner, County Treasurer

#### APPROVAL BY COUNTY PLAT BOARD

This plat was approved on the *30th* day of *September*, 1960, by the Washtenaw County Plat Board.

*Patricia Newkirk Hardy* County Register of Deeds  
*John M. Flook* County Drain Commissioner  
*J. Martin Rempp* Auditor  
*Herbert G. Loeffler* Auditor  
*John P. Cook* Auditor

COPY  
Register's Office  
Washtenaw County

Recorded this *28th* day of *October*, A.D. 19*60* at *2:53* O'clock  
P.M. in Liber *15* of *plats*  
Book *34435*  
*Patricia Newkirk Hardy*