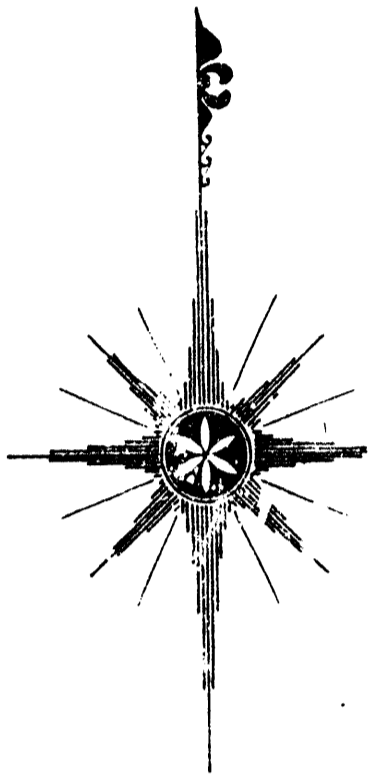
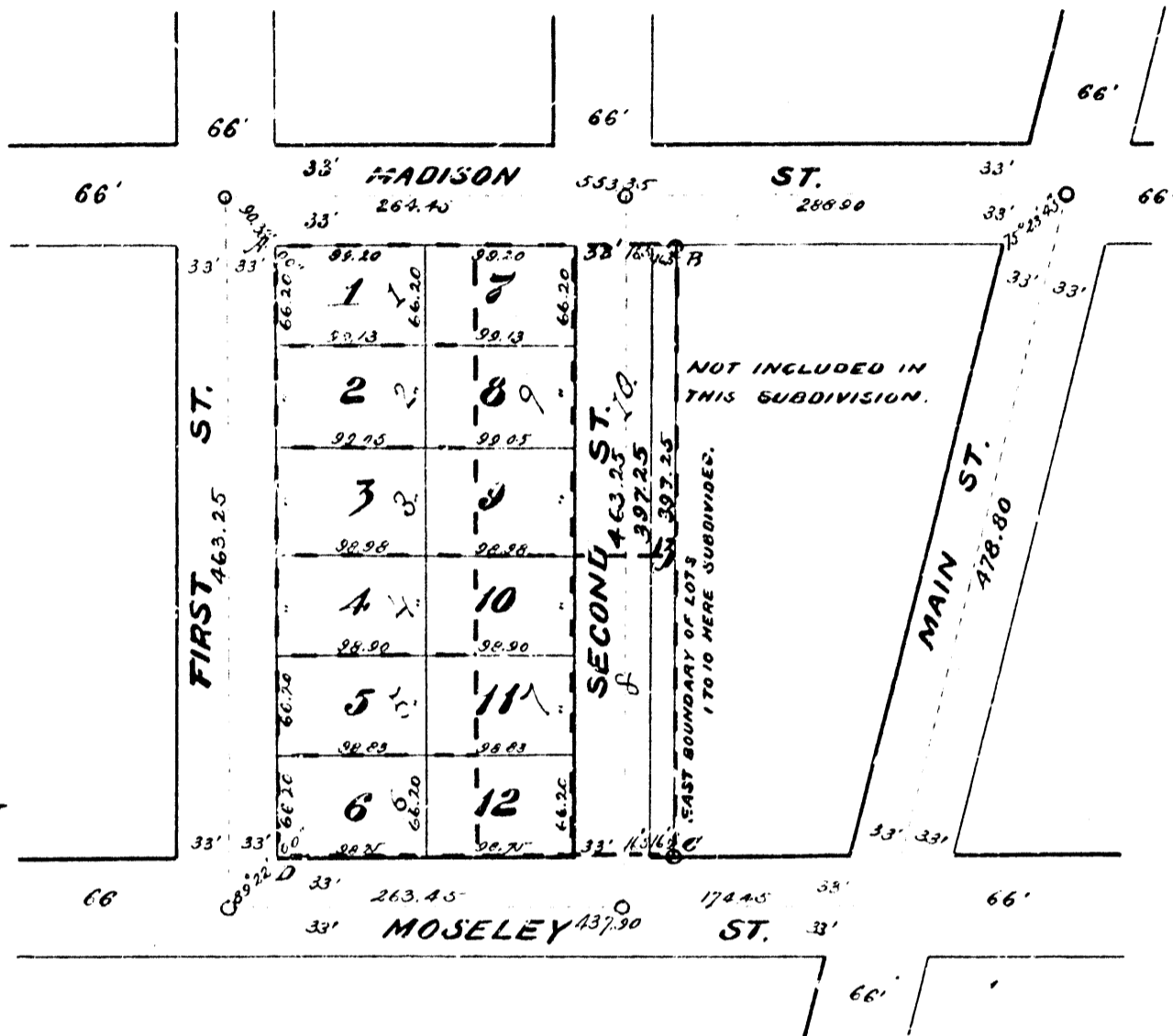


# HINMAN'S SUB-DIVISION

Ann Arbor, Mich.



SCALE 1 INCH = 100 FEET



### DESCRIPTION OF LAND PLATTED.

Lots 1, 2, 3, 4, 5, 6, 7, 8, 9 and 10 in Block No. (4) South of Range No. (12) and Three (3) East of W. S. Maynard's Sec. 1st Addition to Ann Arbor, Michigan, according to the plat of said addition as recorded in the office of the Register of Deeds, in and for the county of Washtenaw, Michigan, Aug. 23, 1895 as shown on the annexed plat.

### EXPLANATION.

Monuments at street intersections are of Iron, Brick and Stone. Dot stakes are of White Oak, two inches square and two feet long.

### DEDICATION.

KNOW ALL MEN BY THESE PRESENTS, that Edward C. Hinman as proprietor and Spudor M. his wife have caused the land in the above plat to be surveyed, laid out and platted, to be known as Hinman's Subdivision, and that the street shown on said plat is hereby dedicated to the use of the public.

Witness our hands and seals this 10th day of May, 1895.  
 In presence of: Edward C. Hinman (L.S.)  
 Spudor M. Hinman (L.S.)  
 Edgar C. Barr  
 Mary M. Barsthy

### ACKNOWLEDGEMENT.

STATE OF MICHIGAN } SS  
 COUNTY OF Washtenaw }

On this, the tenth day of May, 1895 before me, a Notary Public in and for said County, personally appeared the above named Edward C. Hinman and Spudor M. his wife, of Washtenaw County, Michigan, known to me to be the same persons who executed the above dedication, and who acknowledged the same to be their free act and deed.

Edgar C. Barr, Notary Public  
 Washtenaw County, Michigan.

### SURVEYORS CERTIFICATE.

I hereby certify that the area set in record, and that monuments, consisting of Iron, Stone and Brick has been placed in the ground at all angles in the boundaries and at the intersection of all streets as shown on plat by O and the lot corners marked by White Oak Stakes two inches square and two feet long.  
 May 16th, 1895.  
 J. W. Davis.

STATE OF MICHIGAN } SS  
 COUNTY OF Washtenaw }

I, J. W. Davis, Register of Deeds and J. W. Davis, Surveyor, County of Washtenaw, Michigan, hereby certify that we have carefully compared this copy with the original plat of Hinman's Subdivision, and that it is an exact copy thereof and of the contents of such respective maps or plats.  
 J. W. Davis, Register of Deeds.  
 J. W. Davis, Surveyor.

### CERTIFICATE OF RECORD.

REGISTERS OFFICE } SS  
 WASHTENAW COUNTY }

Received for record the 1st day of July, 1895, at 8:11 o'clock P.M. and recorded in Liber 1 of plats on page 112.  
 J. W. Davis, Register of Deeds.

### AUDITOR GENERAL'S CERTIFICATE OF APPROVAL.

Examined and approved  
 May 23, 1895  
 D. D. Ringler  
 Dep. Aud. Gen.

### CITY CLERK'S CERTIFICATE OF APPROVAL BY CITY COUNCIL BOARD OF PUB. WORKS

Examined and approved in the name of the City of Ann Arbor, Michigan, this 10th day of May, 1895.  
 J. W. Davis