

MAY 23 1954

RECEIVED FOR RECORD
MAY 23 10 04 AM '54
FARM RECORDS
RECORDS SECTION
LIBER 13 OF PLATE
Pgs 40 and 41.

ORIGINAL SHEET 1 OF 2

HILLWOOD SUBDIVISION NO. 4

A PART OF THE S 1/2 OF SECTION 27, T2S, R6E, ANN ARBOR TOWNSHIP, WASHTENAW COUNTY, MICHIGAN
SCALE: 1" = 50'
ALL DIMENSIONS IN FEET AND DECIMALS THEREOF
ALL DIMENSIONS ON CURVES ARE ARC LENGTHS
SURVEY BY ATWELL-HICKS, INC. ANN ARBOR

HILLWOOD SUBDIVISION

HUNTINGTON ROAD
DRAINAGE EASEMENT

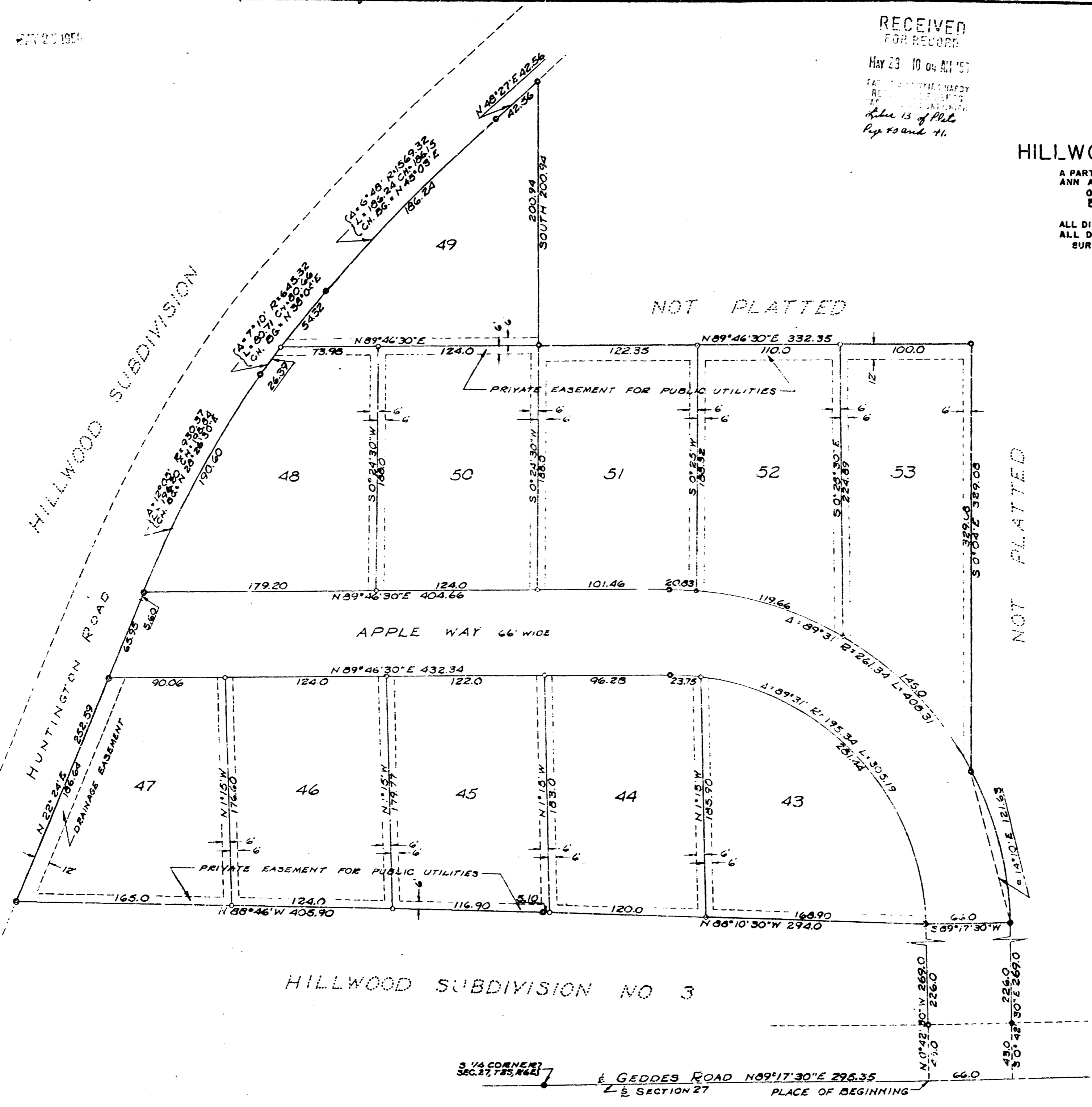
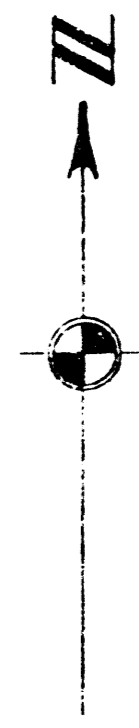
APPLE WAY 66' WIDE

HILLWOOD SUBDIVISION NO 3

E GEDDES ROAD N09°17'30"E 295.35
PLACE OF BEGINNING

NOT PLATTED

NOT PLATTED



RECEIVED
MAY 23 10 04 AM '54
FARM RECORDS
RECORDS SECTION

Liber 13 Page 40
Washtenaw County

DEDICATION

KNOW ALL MEN BY THESE PRESENTS, that I, Jessie E. Bourquin, a widow, as proprietor, have caused the land embraced in the annexed plat to be surveyed, laid out, and platted, to be known as HILLWOOD SUBDIVISION NO. 4 a part of the S 1/2 of Section 27, T 2 S, R 6 E, Ann Arbor Township, Washtenaw County, Michigan and that the streets as shown on said plat are hereby dedicated to the use of the public

Signed and Sealed in the Presence of:

Claude S. Rogers (Witness) Jessie E. Bourquin
Alice I. Bourquin (Witness)

DESCRIPTION OF LAND PLATTED

The land embraced in the annexed plat of HILLWOOD SUBDIVISION NO. 4 a part of the S 1/2 of Section 27, T 2 S, R 6 E, Ann Arbor Township, Washtenaw County, Michigan is described as follows:

COMMENCING at the S 1/4 corner of Section 27, T 2 S, R 6 E, Ann Arbor Township, Washtenaw County, Michigan; thence East along the south line of said section N 89°-17'-30" E 295.35 feet for a PLACE OF BEGINNING; thence N 0°-42'-30" W 269.0 feet; thence N 88°-10'-30" W 294.0 feet; thence N 88°-46' W 405.90 feet; thence N 23°-24' E 252.59 feet; thence northerly in the arc of a tangential circular curve concave to the east, radius 930.37 feet, chord N 28°-28'-30" E 195.84 feet; thence northerly in the arc of a compound circular curve concave to the east, radius 645.32 feet, chord N 38°-04' E 80.66 feet; thence northeasterly in the arc of a compound circular curve concave to the SW, radius 1569.32 feet, chord N 45°-03' E 186.15 feet; thence N 48°-27' E 42.56 feet; thence South 200.94 feet; thence N 89°-46'-30" E 332.35 feet; thence S 0°-04' E 329.08 feet; thence southerly in the arc of a circular curve concave to the west, radius 261.34 feet, chord S 14°-10' E 121.63 feet; thence S 0°-42'-30" E 269.0 feet; thence S 89°-17'-30" W 66.0 feet to the place of beginning, containing 11 lots numbered 43 through 53 inclusive.

RECEIVED FOR RECORD MAY 23 10 04 AM '55

ORIGINAL SHEET 2 OF 2

HILLWOOD SUBDIVISION NO. 4

A PART OF THE S 1/2 OF SECTION 27, T2S, R6E, ANN ARBOR TOWNSHIP, WASHTENAW COUNTY, MICHIGAN

0 50 100 150

SCALE: 1" = 50'

ALL DIMENSIONS IN FEET AND DECIMALS THEREOF ALL DIMENSIONS ON CURVES ARE ARC LENGTHS SURVEY BY ATWELL-HICKS, INC. ANN ARBOR

ACKNOWLEDGMENT

STATE OF MICHIGAN)
County of Washtenaw) ss.

On this 15th day of October, 1955, before me, a Notary Public in and for said County, personally came the above named Jessie E. Bourquin, a widow, known to me to be the person who executed the above dedication, and acknowledged the same to be her free act and deed.

Claude S. Rogers
Notary Public, Washtenaw County
My Commission expires 10/13/1958

APPROVAL BY BOARD OF COUNTY ROAD COMMISSIONERS

This plat has been examined and was approved on the 13th day of May, 1955 by the Washtenaw County Board of Road Commissioners.

James C. Hendley (Chairman)
Raymond L. Koch (Member)
H. L. Frislinger (Member)

EXAMINED AND APPROVED DATE MAY 25 1955
Victor Tarzanski, MUNICIPAL ENGINEER

MUNICIPAL APPROVAL

This plat was approved by the Township Board of the Township of Ann Arbor at a meeting held March 12, 1955.

Ray F. Wurster (Clerk)

APPROVAL BY COUNTY PLANNING COMMISSION

This plat was approved on the 19th day of December, 1955.

Donald M. Silkworth (Chairman)
John W. Hyde (Member)
Sanford S. Farness (Director)

SURVEYOR'S CERTIFICATE

I hereby certify that the plat hereon delineated is a correct one and that permanent metal monuments consisting of bars not less than one-half inch in diameter and 36 inches in length, or shorter bars of not less than one-half inch in diameter lapped over each other at least 6 inches with an over-all length of not less than 36 inches, encased in a concrete cylinder at least 4 inches in diameter and 36 inches in depth, have been placed at points marked thus (O) as thereon shown at all angles in the boundaries of the land platted, at all the intersections of lines of streets, and at the intersections of lines of streets with the boundaries of the plat as shown on said plat.

Robert J. Jagow
Registered Land Surveyor #6998

COUNTY TREASURER'S CERTIFICATE

Office of County Treasurer, Washtenaw County
I hereby certify, that there are no tax liens or titles held by the State on the lands described hereon, and that there are no tax liens or titles held by individuals on said lands, for the five years preceding the 21st day of May, 1956, and that the taxes for said period of five years are all paid, as shown by the records of this office.

W. F. Verner (County Treasurer)

TOWNSHIP CLERK'S CERTIFICATE

Office of Township Clerk, Ann Arbor Township

I hereby certify that the width and depth of lots shown on this plat are in compliance with rule and regulations of Ann Arbor Township and the requirements as to width and depth of Sec. 30 of Act 172, Public Acts of 1929 as amended by Act 186 Public Acts of 1954.

Ray F. Wurster (Clerk)

APPROVAL BY COUNTY PLAT BOARD

This plat was approved on the 15th day of October, 1955 by the Washtenaw County Plat Board.

Patricia Newkirk Hardy (County Register of Deeds)
J. Martin Rempp (Auditor)
Adolph F. Gross (Auditor)
Herbert G. Loeffler (Auditor)

ATTORNEY'S OPINION

I hereby certify from an examination of abstract of title to the lands described in this plat that I find no outstanding interest, including mineral rights, other than in the parties joining in the dedication.

Date Oct. 15, 1955
Claude S. Rogers (Attorney)

Liber 13 Page 41
Washtenaw County