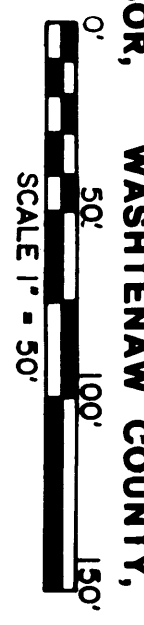
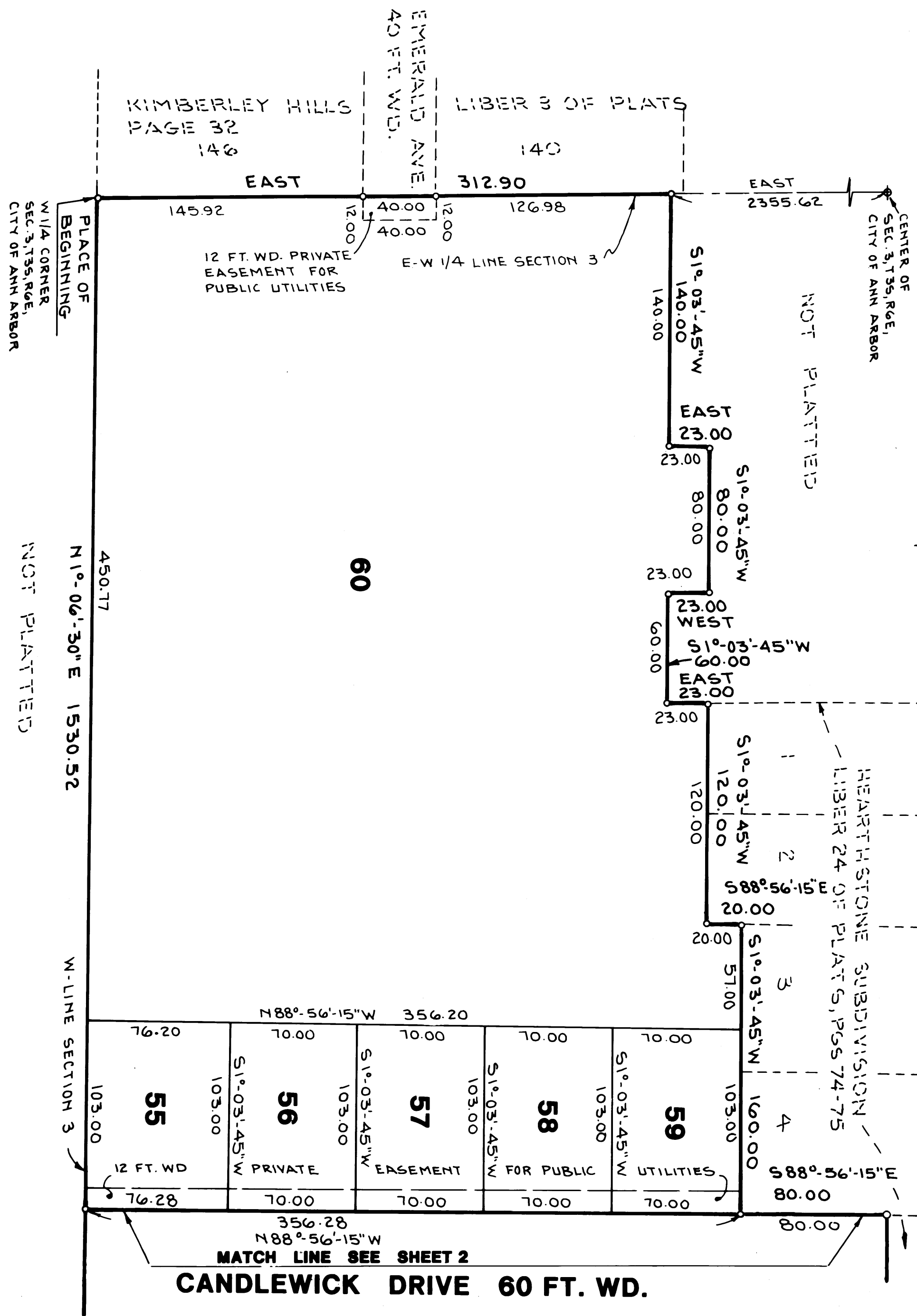


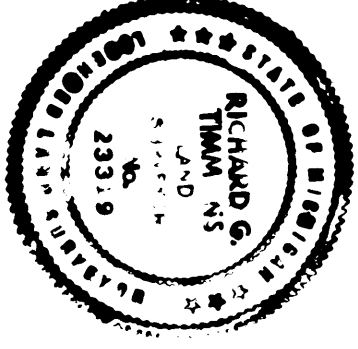
**HEARTHSTONE SUBDIVISION NO. 2**  
 A SUBDIVISION OF PART OF THE SW 1/4 OF SECTION 3, T35, R6E,  
 CITY OF ANN ARBOR, WASHTENAW COUNTY, MICHIGAN



ALL DIMENSIONS ARE IN FEET.  
 ALL BEARINGS ARE RELATED TO THE SOUTH LINE OF "KIMBERLEY HILLS"  
 SUBDIVISION AS RECORDED IN LIBER 3 OF PLATS, PAGE 32, WASHTENAW  
 COUNTY RECORDS.  
 3/4" X 18" IRON PIPE SET AT ALL LOT CORNERS.  
 1/2" X 36" IRON BAR ENCASED IN 4" DIAMETER CONCRETE MONUMENT  
 SET AT POINTS MARKED (O).  
 ALL DIMENSIONS ON CURVES ARE  
 RADIAL LOT LINES ARE SHOWN WITH A (R).



*Richard G. Timmons*  
 RICHARD G. TIMMONS



PREPARED AND DRAFTED BY ATWELL - HICKS, INC.  
 1241 SOUTH MAPLE ROAD, ANN ARBOR, MI. 48103

**SHEET 1 of 4**

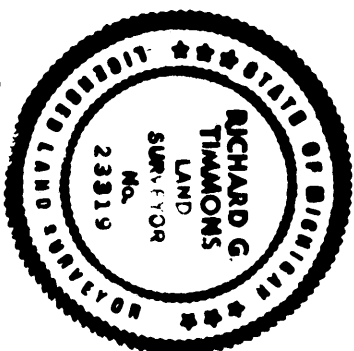
**3-F-648-1**

# HEARTHSTONE SUBDIVISION NO. 2

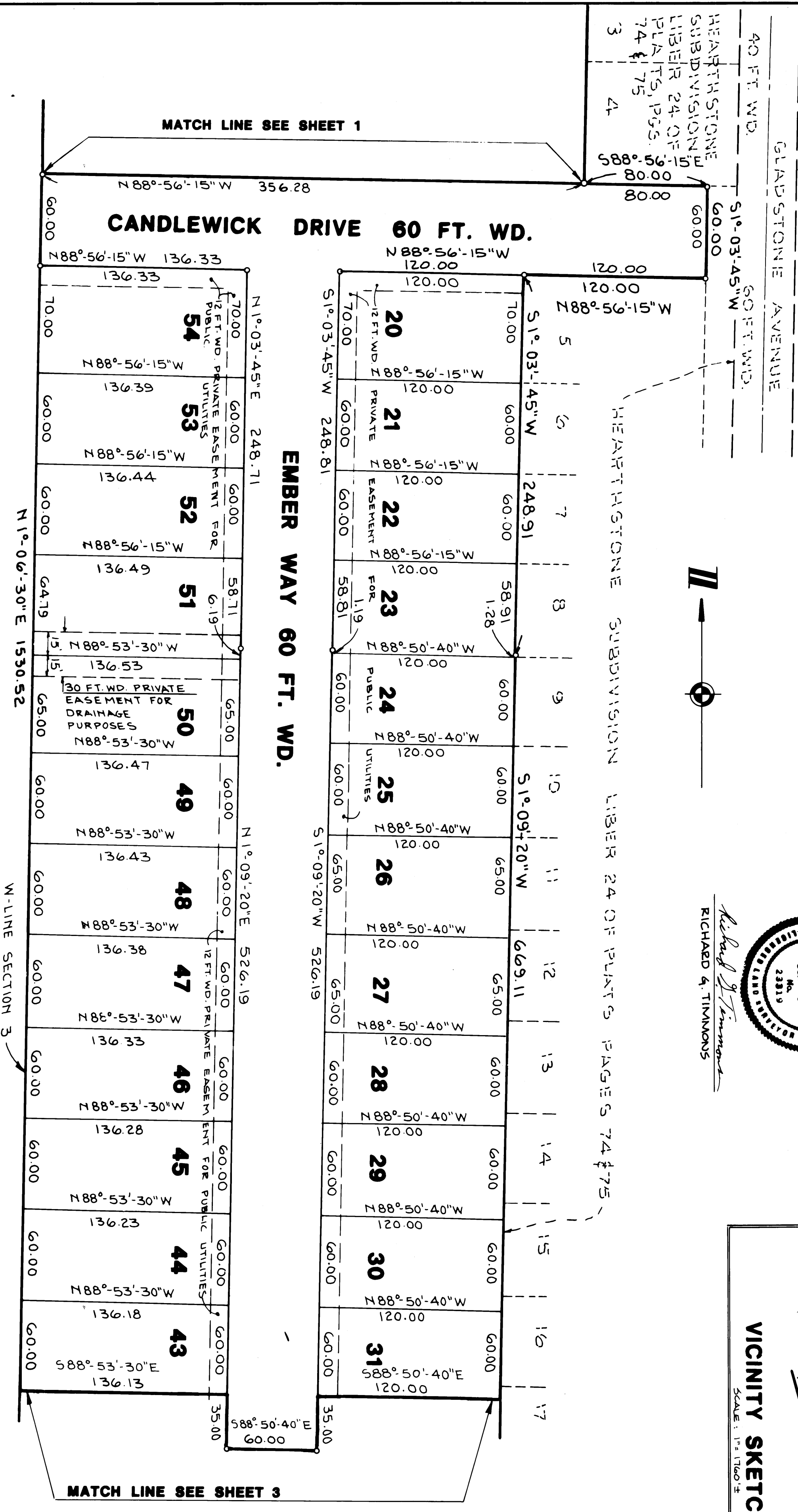
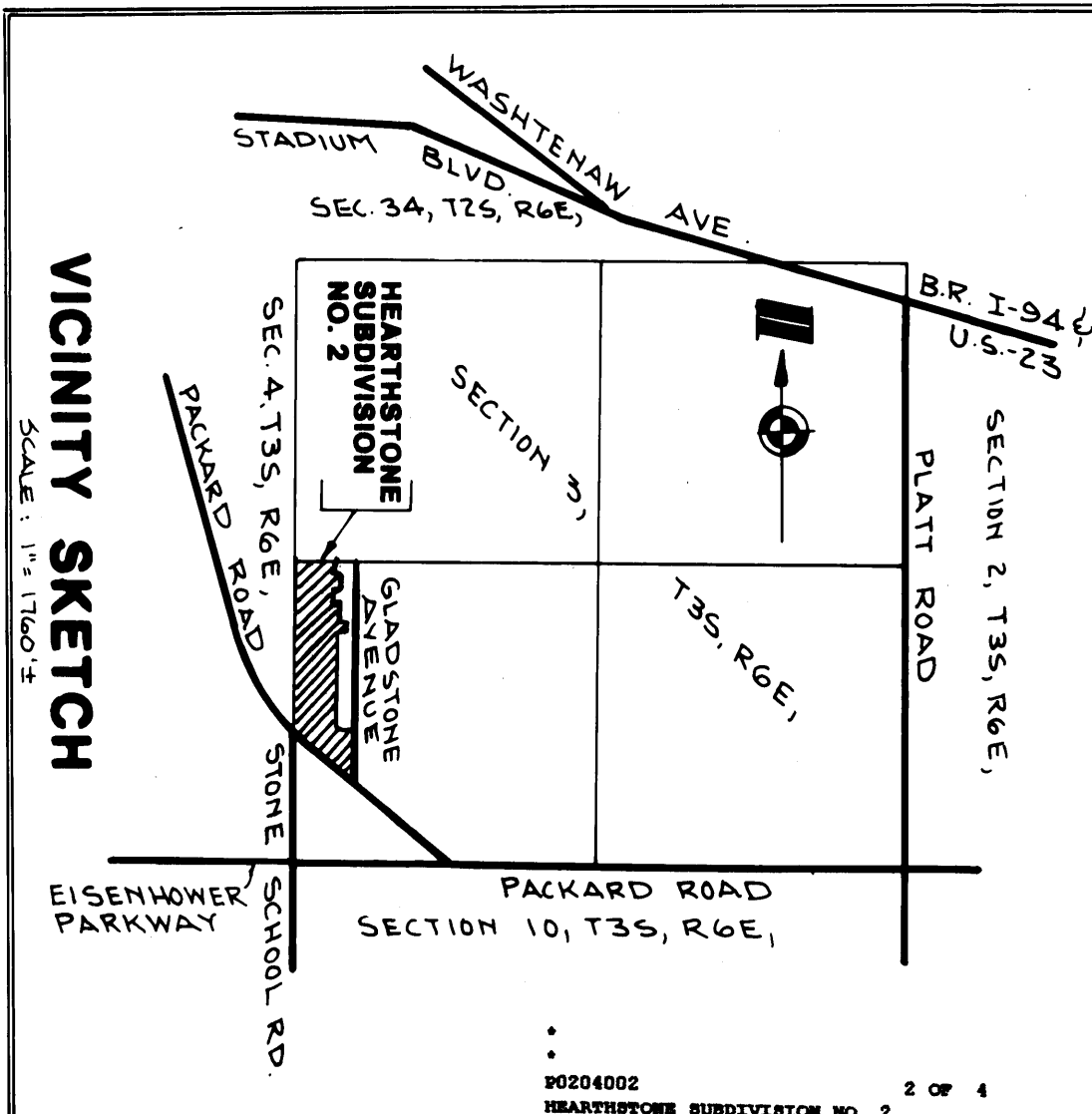
## A SUBDIVISION OF PART OF THE SW 1/4 OF SECTION 3, T35, R6E, CITY OF ANN ARBOR, WASHTENAW COUNTY, MICHIGAN



ALL DIMENSIONS ARE IN FEET.  
ALL BEARINGS ARE RELATED TO THE SOUTH LINE OF "KIMBERLEY HILLS"  
SUBDIVISION AS RECORDED IN LIBER 3 OF PLATS, PAGE 32, WASHTENAW  
COUNTY RECORDS.  
3/4" X 18" IRON PIPE SET AT ALL LOT CORNERS.  
1/2" X 36" IRON BAR ENCASED IN 4" DIAMETER CONCRETE MONUMENT  
SET AT POINTS MARKED (O).  
ALL DIMENSIONS ON CURVES ARE ARC LENGTHS.  
RADIAL LOT LINES ARE SHOWN WITH A (R).



*Richard G. Timmons*  
RICHARD G. TIMMONS



PREPARED AND DRAFTED BY ATWELL - HICKS, INC.  
1241 SOUTH MAPLE ROAD, ANN ARBOR, MI. 48103

NOT PLATTED

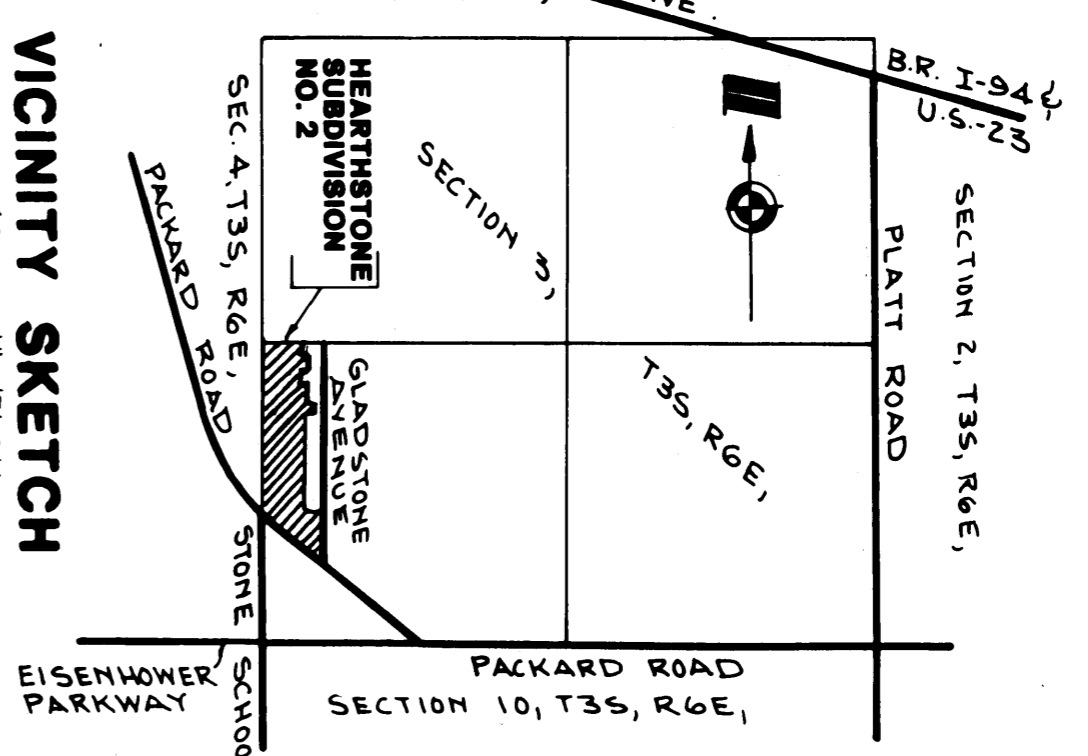
W-LINE SECTION 3

CURVE DATA:				
CURVE NO.	ARC LENGTH	RADIUS	DELTA	CHORD BEARING
①	25.13	145.00	9°-55'-40"	S83°-52'-50"E
②	221.16	145.00	90°-00'-00"	N43°-50'-40"W
③	322.01	205.00	90°-00'-00"	S43°-50'-40"E
④	210.08	561.00	21°-13'-45"	N39°-44'-35"W

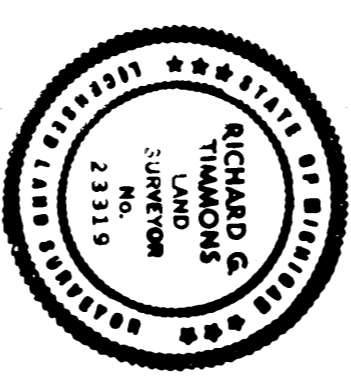
ALL DIMENSIONS ARE IN FEET.  
 ALL BEARINGS ARE RELATED TO THE SOUTH LINE OF "KIMBERLEY HILLS" SUBDIVISION AS RECORDED IN LIBER 3 OF PLATS, PAGE 32, WASHTENAW COUNTY RECORDS.  
 3/4" X 18" IRON PIPE SET AT ALL LOT CORNERS.  
 1/2" X 36" IRON BAR ENCASED IN 4" DIAMETER CONCRETE MONUMENT SET AT POINTS MARKED (O).  
 ALL DIMENSIONS ON CURVES ARE ARC LENGTHS.  
 RADIAL LOT LINES ARE SHOWN WITH A (R).



**HEARTHSTONE SUBDIVISION NO. 2**  
 A SUBDIVISION OF PART OF THE SW 1/4 OF SECTION 3, T35, R6E,  
 CITY OF ANN ARBOR, WASHTENAW COUNTY, MICHIGAN



**VICINITY SKETCH**  
 SCALE: 1" = 1760.1'



*Richard G. Timmons*  
 RICHARD G. TIMMONS

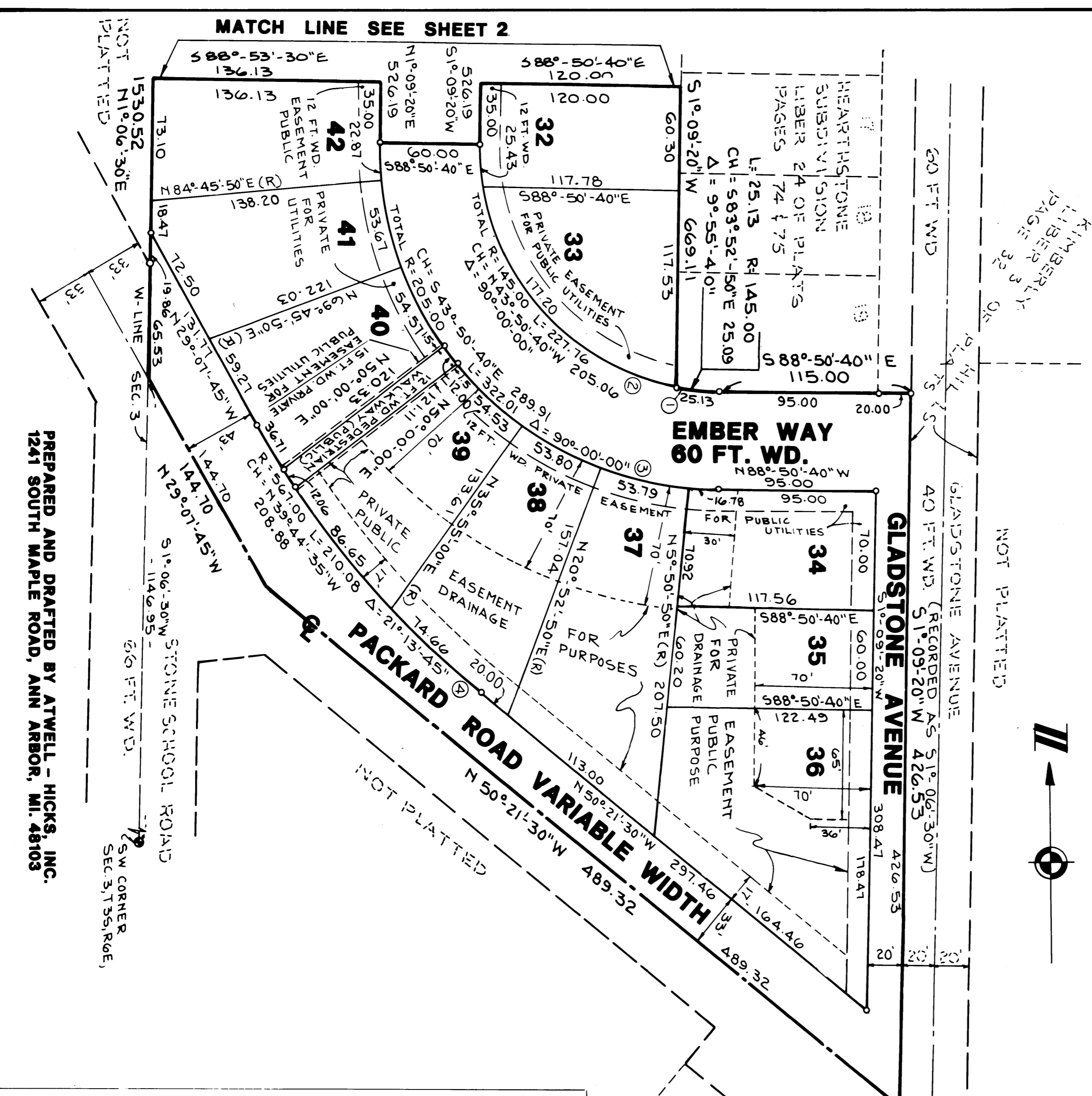
**PROPRIETORS CERTIFICATE:**  
 The City of Ann Arbor, a Michigan Municipal Corporation, duly organized and existing under the laws of the State of Michigan, by Edward C. Pierce, Mayor and Winifred W. Northcross, City Clerk, as proprietors, has caused the land to be surveyed, divided, mapped and dedicated as represented on this plat and that the streets and walkway are for the use of the public, that the public utility easements are private easements and that all other easements are for the uses shown on the plat.

Witnesses  
*Katherine K. Edgren*  
 Katherine K. Edgren  
*Katherine K. Edgren*  
 Katherine K. Edgren

City of Ann Arbor  
 100 N. Fifth Ave.  
 Ann Arbor, Michigan 48108  
*Edward C. Pierce*  
 Edward C. Pierce, Mayor

County of Washtenaw )  
 State of Michigan )  
 ACKNOWLEDGEMENT )  
 Notary Public, Washtenaw County, Michigan  
*Yvonne Fraser Carl*  
 Yvonne Fraser Carl, Deputy City Clerk

Personally came before me this 2nd day of March 1987, the above named Edward C. Pierce, Mayor and Winifred W. Northcross, City Clerk, to me known to be such Mayor and City Clerk of said Corporation, and acknowledged the foregoing instrument as such officers as their free act and deed of said corporation by its authority.  
*Barrie E. Grimston*  
 Barrie E. Grimston  
 Notary Public, Washtenaw County, Michigan  
 My commission expires: 4-24-88



**HEARTHSTONE SUBDIVISION NO. 2**  
**A SUBDIVISION OF PART OF THE SW 1/4 OF SECTION 3, T3S, R6E,**  
**CITY OF ANN ARBOR, WASHTENAW COUNTY, MICHIGAN**

CERTIFIED TRUE COPY OF  
 RECORDED PLAT  
 BY DEPARTMENT OF COMMERCE  
 By Richard E. Lomax  
 Richard E. Lomax, L.S.  
 Manager Plat Section

Date August 5, 1987

**SURVEYORS CERTIFICATE**

I, Richard G. Timmons, Surveyor, Certify:

That I have surveyed, divided and mapped the land shown on this plat, described as follows: HEARTHSTONE SUBDIVISION NO. 2, a subdivision of part of the SW 1/4 of Section 3, T3S, R6E, City of Ann Arbor, Washtenaw County, Michigan. BEGINNING at the West 1/4 Corner of Section 3, T3S, R6E, City of Ann Arbor, Washtenaw County, Michigan; thence EAST 312.90 feet along the East-West 1/4 line of said Section 3 and the south line of Kimberley Hills Subdivision as recorded in Liber 3 of Plats, Page 32, Washtenaw County Records; thence S01°03'45"W 140.00 feet; thence EAST 23.00 feet; thence S01°03'45"W 80.00 feet; thence WEST 23.00 feet; thence S01°03'45"W 60.00 feet; thence EAST 23.00 feet to the Northwest Corner of Lot 1 of Hearthstone Subdivision as recorded in Liber 24 of Plats, pages 74 and 75, Washtenaw County Records; thence along the following four courses along the west line of said Hearthstone Subdivision: S01°03'45"W 120.00 feet, S88°56'15"E 20.00 feet, S01°03'45"W 160.00 feet and S88°56'15"E 80.00 feet; thence S01°03'45"W 60.00 feet along the west line of said Hearthstone Subdivision and west line of Gladstone Avenue; thence along the following five courses along the West line of said Hearthstone Subdivision: N88°56'15"W 120.00 feet, S01°03'45"W 248.91 feet, S01°09'20"W 669.11 feet, 25.13 feet along the arc of a 145.00 feet radius non-tangential circular curve to the left, central angle of 9°55'40", chord S83°52'50"E 25.09 feet and S88°50'40"E 115.00 feet; thence S01°09'20"W 426.53 feet along the west line of Gladstone Avenue (recorded as S01°06'30"W); thence N50°21'30"W 489.32 feet along the centerline of Packard Road; thence continuing along said centerline N29°07'45"W 144.70 feet; thence N01°06'30"E 1530.52 feet along the west line of said section to the Place of Beginning, containing 41 lots numbered 20 through 60 inclusive and containing 14.06 acres of land more or less.

That I have made such survey, land-division and plat by the direction of the owners of such land.

That such plat is a correct representation of all the exterior boundaries of the land surveyed and the subdivision of it.

That the required monuments and lot markers have been located in the ground or that surety has been deposited with the municipality, as required by Section 125 of the Act.

That the accuracy of survey is within the limits required by Section 126 of the Act.

That the bearings shown on the plat are expressed as required by Section 126 (3) of the Act and as explained in the legend.

Date Jan. 14, 1987

ATWELL-HICKS, INC.



Allen R. Suggitt  
 Allen R. Suggitt, President  
 Professional Engineer No. 12414  
 1241 S. Maple Road  
 Ann Arbor, MI 48103

Richard G. Timmons  
 Richard G. Timmons, Secretary  
 Land Surveyor No. 23319  
 1241 S. Maple Road  
 Ann Arbor, MI 48013

**PROPRIETOR'S CERTIFICATE**

We as proprietors certify that we have caused the land embraced in this plat to be surveyed, divided, mapped and dedicated as represented on this plat and that the streets and walkway are for the use of the public; that the public utility easements are private easements and that all other easements are for the uses shown on the plat.

Witnesses:

Richard G. Timmons  
 Richard G. Timmons

Harry A. Dion  
 Harry A. Dion  
 2114 Winchell Drive  
 Ann Arbor, MI 48104

Krishan C. Janveja  
 Krishan C. Janveja

Patricia Lynch Dion  
 Patricia Lynch Dion  
 2114 Winchell Drive  
 Ann Arbor, MI 48104

**ACKNOWLEDGEMENT**

STATE OF MICHIGAN )  
 County of Washtenaw ) ss.

Personally came before me this 14 day of January, 1987, the above named Harry A. Dion and Patricia Lynch Dion, husband and wife, to me known to be the persons who executed the foregoing instrument and acknowledged that they executed the same as their free act and deed.

Gloria J. Maurer  
 Gloria J. Maurer  
 Notary Public  
 Washtenaw County, Michigan

My Commission Expires: December 8, 1987

**COUNTY TREASURER'S CERTIFICATE**

The records in my office show no unpaid taxes or special assessments for the five years preceding January 14, 1987, involving the lands included in this plat.

Michael A. Stimpson  
 Michael A. Stimpson, Treasurer  
 Washtenaw County, Michigan

**COUNTY DRAIN COMMISSIONER'S CERTIFICATE**

Approved on Jan 27<sup>th</sup>, 1987 as complying with Section 192 of Act 288, P.A. of 1967, and the applicable rules and regulations published by my office in the County of Washtenaw.

James E. Murray  
 James E. Murray, Drain Commissioner

**CERTIFICATE OF MUNICIPAL APPROVAL**

I certify that this plat was approved by City Council of the City of Ann Arbor, at a meeting held February 16, 1987 and was reviewed and found to be in compliance with Act 288, P.A. of 1967, and that proper surety has been posted with the City of Ann Arbor to insure the construction of the public sewers and public water system, and the City of Ann Arbor does have the proper adopted zoning and subdivision control ordinance with reference to Section 148 (4) and 186 of Act 288, P.A. of 1967 and the City of Ann Arbor waives minimum lot size requirements. Proper surety has been posted with the City of Ann Arbor to insure the placement of monuments and lot corners prior to February 16, 1988.

Yvonne Fraser Carl  
 Yvonne Fraser Carl, Deputy City Clerk

**COUNTY PLAT BOARD CERTIFICATE**

This plat has been reviewed and is approved by the Washtenaw County Plat Board on March 12, 1987, 1987, as being in compliance with all of the provisions of Act 288, P.A. of 1967, and the Plat Board's applicable rules and regulations.

Dillard Roy Craiger  
 Dillard Roy Craiger  
 Chairman, Plat Board  
 Washtenaw County Board of Commissioners

Robert M. Harrison  
 Robert M. Harrison  
 County Clerk/Register of Deeds

Michael A. Stimpson  
 Michael A. Stimpson  
 County Treasurer

**RECORDING CERTIFICATE**

STATE OF MICHIGAN )  
 County of Washtenaw ) ss.

This plat was received for record on the 12<sup>th</sup> day of June, 1987 at 8:59 A.M., and recorded in Liber 25 of Plats on pages 23, 24, 25 & 26.

Robert M. Harrison  
 Robert M. Harrison  
 County Clerk/Register of Deeds