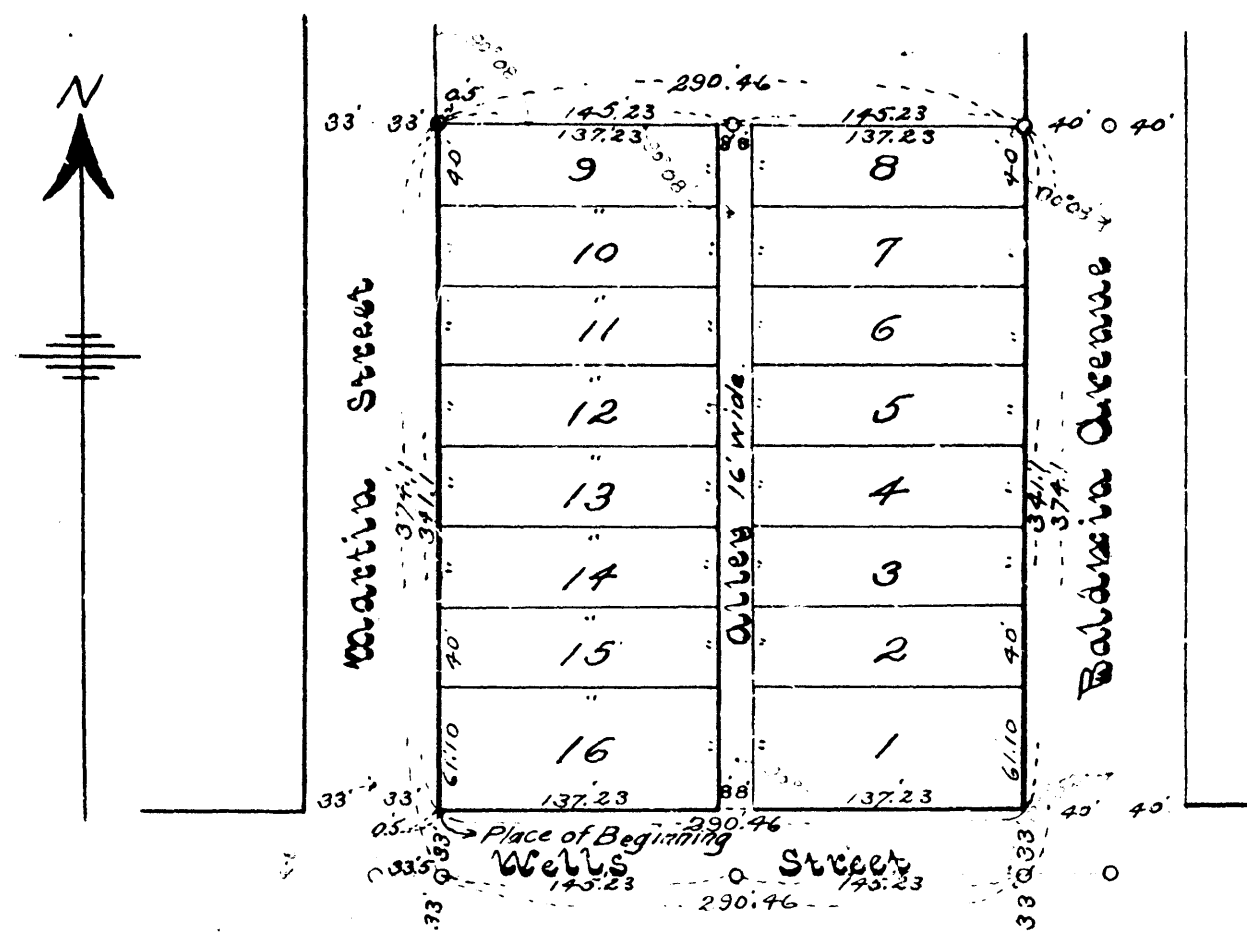
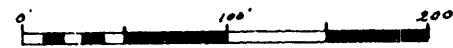


**Map
of
Harkins Sub-division
in the
City of Ann Arbor, Washtenaw Co., Mich.**

Scale 1"=100'



RECORDED
SUB-DIVISION
PLAT 17
05/19/1905
1 OF 1

Surveyor's Certificate.

I hereby certify that the plat herein delineated is a correct one, and that permanent monuments, consisting of iron and brick, have been planted at points marked thus o as thereon shown.

H. B. Merriok,
Surveyor.

Acknowledgement.

State of Michigan } ss.
County of Washtenaw }

On this Eighth day of May, 1905 before me, a Notary Public in and for said county, personally came the above named James E. Harkins, and Lottie E. Harkins, his wife, known to me to be the persons who executed the above dedication, and acknowledged the same to be their free act and deed.

Jas. R. Bach,
Notary Public,
Washtenaw Co., Mich.

My Commission Expires
October 24, 1906.

Description.

The land embraced in the annexed plat of Harkins Sub-division is described as follows:-

Beginning at a point 33.5' E. of the intersection of Wells and Martin Sts., measured along the center line of Wells St., and 33' N. thereat, measured along the W. line of the property produced;
thence, Nly. at a N.Ely. angle of 90° 08', 341.10;
thence, Ely. at a S.Ely. angle of 89° 52', 290.46;
thence, Sly. at a S.Wly. angle of 90° 08', 341.10;
along the west line of Baldwin Avenue;
thence, Wly. at a N.Wly. angle of 89° 52', 290.46 to the place of beginning.

For the location of the intersection of Wells and Martin Streets see Plat of Olivia B. Hall's 2nd Sub-division, recorded in the office of the Register of Deeds, at Ann Arbor, Washtenaw Co., Michigan.

Certificate of Comparison with the Original.

State of Michigan } ss.
County of Washtenaw }

We *Lill Russell*, Register of Deeds in and for said county, and *H. B. Merriok*, Surveyor, hereby certify that we have each carefully compared this copy with the original plat of Harkins Sub-division and that it is an exact copy thereof and of the whole of such original map or plat.

Lill Russell,
Register of Deeds
H. B. Merriok,
Surveyor.

Certificate of Approval.

By the Board of Public Works.

This plat was approved at a regular meeting of the Board of Public Works, City of Ann Arbor, Michigan, the 10th day of May, 1905.

Ross Granger,
Clerk

Tax Certificate.

County Treasurer's Office
Washtenaw Co., Mich.
Ann Arbor, Mich. May 6th, 1905.

It is hereby certified that the following statement shows the condition of Lands described below in the County of Washtenaw so far as relates to the State and County taxes prior to the 6th day of May, 1905, to wit:-

A piece of land, part of Sec. 33, A.A. containing about 2 Acres of land lying south of, and adjoining Sedgewick land, and between Martin and Baldwin Ave. and Wells Street, about 340.87 by 290.16 as appears by the records of this office

Not any.

[State Delinquent Taxes, if any, during five years prior to date of Plat]

Otto D. Luick,
County Treasurer.

Above Tax Certificate was presented with this plat.

Lill Russell,
Register of Deeds,
for Said County.

Dedication.

Know all men by these presents, that we, James E. Harkins, as proprietor, and Lottie E. Harkins, his wife, have caused the land embraced in the annexed plat to be surveyed, laid out, and platted, to be known as Harkins Sub-division and that the streets and alleys as shown on said plat are hereby dedicated to the use of the public.

Signed and sealed in the presence of

Jas. R. Bach
W. N. Salisbury

Jas. E. Harkins [L.S.]
Lottie E. Harkins [L.S.]

Certificate of Approval.

Examined and Approved
May 13th, 1905
John T. Wilkinson
Deputy Auditor General.

Certificate of Record.

Register's Office } ss.
Washtenaw County }

Received for Record the 11th day of May, 1905, at 2:25 o'clock P.M., and Recorded in Liber 2 of Plats, on Page 17.

Lill Russell,
Register.