

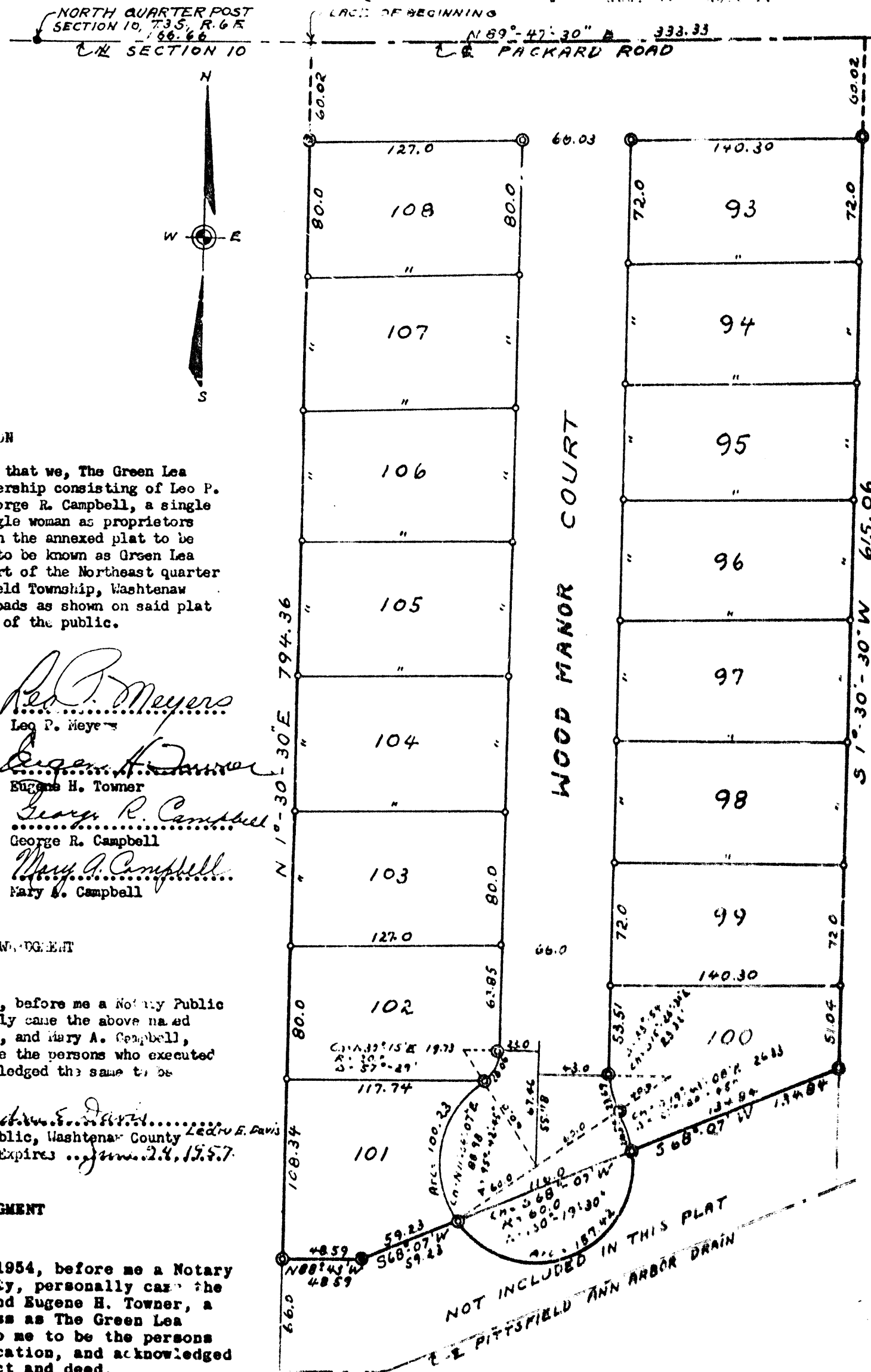
EXAMINED AND APPROVED

Date AUG 30 1954

John B. Mester  
John B. Mester  
AUDITOR GENERAL  
By *[Signature]*  
Plat Engineer

"GREEN LEA NUMBER TWO"  
A SUBDIVISION OF PART OF THE NORTHEAST QUARTER OF SECTION 10,  
T.3 S., R.6 E., PITTSFIELD TWP., WASHTENAW COUNTY, MICHIGAN.

SCALE: ONE INCH = 60 FEET



DEDICATION

BEFORE ALL MEN BY THESE PRESENTS, that we, The Green Lea Development Company, a partnership consisting of Leo P. Meyers and Eugene H. Townner; George R. Campbell, a single man and Mary A. Campbell, a single woman as proprietors have caused the land embraced in the annexed plat to be surveyed, laid out and platted to be known as Green Lea Number Two, a subdivision of part of the Northeast quarter of Section 10, T3S-R6E, Pittsfield Township, Washtenaw County, Michigan and that the roads as shown on said plat are hereby dedicated to the use of the public.

Signed and sealed in the presence of:

*[Signatures of Leo P. Meyers, Eugene H. Townner, George R. Campbell, Mary A. Campbell]*  
Leo P. Meyers  
Eugene H. Townner  
George R. Campbell  
Mary A. Campbell

ACKNOWLEDGMENT

State of Michigan )  
County of Washtenaw ) ss.  
On this 26th day of July, 1954, before me a Notary Public in and for said County, personally came the above named George R. Campbell, a single man, and Mary A. Campbell, a single woman, known to me to be the persons who executed the above dedication, and acknowledged the same to be their free act and deed.

*[Signature]*  
Notary Public, Washtenaw County  
My Commission Expires June 24, 1957

ACKNOWLEDGMENT

State of Michigan )  
County of Washtenaw ) ss.  
On this 26th day of August, 1954, before me a Notary Public in and for said County, personally came the above named Leo P. Meyers and Eugene H. Townner, a co-partnership doing business as The Green Lea Development Company known to me to be the persons who executed the above dedication, and acknowledged the same to be their free act and deed.

*[Signature]*  
Notary Public, Washtenaw Co.  
My Commission Expires March 24, 1957

SURVEYOR'S CERTIFICATE

I hereby certify that the plat hereon delineated is a correct one, and that permanent monuments consisting of iron rods at least one half inch in diameter and 48 inches in length, encased in concrete cylinders four inches in diameter and 48 inches in length, have been set at points marked thus @ as shown at all angles in the boundaries of the land platted, at all intersections of the lines of streets and of intersections of the lines of streets with the boundaries of the plat.

*[Signature]*  
A. D. Stans  
Registered Land Surveyor

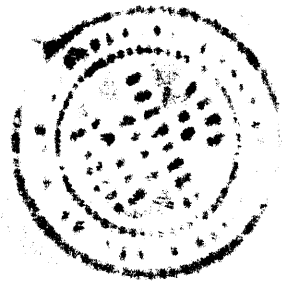
COUNTY TREASURER'S CERTIFICATE

Office of County Treasurer, Washtenaw County, I hereby certify that there are no tax liens or titles held by the State on the lands described hereon, and that there are no tax liens or titles held by individuals on said lands, for the five years preceding the 1st day of Jan. 1954, and that the taxes for said period of five years are all paid, as shown by the records of this office. This certificate does not apply to taxes, if any, now in process of collection by township, city, or village collecting officers.

*[Signature]*  
V. F. Varner  
County Treasurer

DESCRIPTION

The land embraced in the annexed plat of Green Lea Number Two, a subdivision of part of the Northeast Quarter of Section 10, T3S-R6E, Pittsfield Township, Washtenaw County, Michigan is described as follows: Commencing at the North quarter post of Section 10, T3S-R6E, thence North 89°47'30" East 126.66 feet in the North line of Section 10 for a place of beginning, thence North 89°47'30" East 131.11 feet in the North line of Section 10, thence South 1°30'30" West 615.06 feet, thence South 60°01' West 131.01 feet, thence Southwesterly, westerly, and Northwesterly 157.82 feet in the arc of a circular curve to the right of 60 feet radius through a central angle of 15°11'30" the chord bears South 60°01' West 111.0 feet, thence South 60°01' West 59.23 feet, thence North 00°41' West 42.59 feet, thence North 1°30'30" East 794.36 feet to place of beginning.



APPROVAL BY BOARD OF COUNTY ROAD COMMISSIONERS

This plat has been examined and was approved on the 21st day of August, 1954 by the Washtenaw County Board of Road Commissioners.

*[Signatures]*  
James C. Hendley (Chairman)  
B. L. Prinsinger (Member)  
Raymond L. Koch (Member)

APPROVED BY COUNTY PLAT BOARD

This plat was approved on the 27th day of August, 1954 by the Washtenaw County Plat Board.

*[Signatures]*  
Thomas A. Fitzgerald  
Register of Deeds  
Adolph F. Gross  
County Auditor  
Herbert G. Louflier  
County Auditor

APPROVAL OF COUNTY PLANNING COMMISSION

This plat was approved on the 27th day of August, 1954.

*[Signatures]*  
Leigh Beach, Chairman  
John V. Hyde, Member  
William A. Hayes  
Village G. Hayes, Secretary

CERTIFICATE OF MUNICIPAL APPROVAL

This plat was approved by the Township Board of the Township of Pittsfield at a meeting held August 24, 1954.

*[Signature]*  
Hubert B. Fleming  
Clerk

Libert 12 Page 24  
Washtenaw County

RECORDED  
INDEXED  
AUG 31 1954  
Washtenaw County  
Recorder's Office

Blue 12 page 24  
Libert 12 Page 24  
Washtenaw County

24