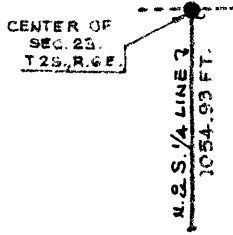


GLACIER HIGHLANDS SUBDIVISION NO. 3

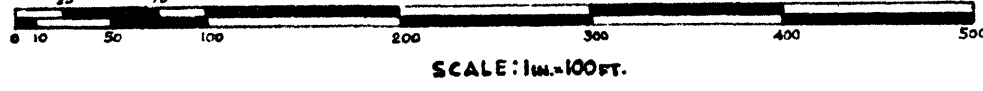
SHEET 1
OF 2 SHEETS.

OF PART OF W.1/2 OF S.E.1/4 OF SECTION 23, T.2 S., R.6 E.

CITY OF ANN ARBOR, WASHTENAW COUNTY, MICHIGAN.

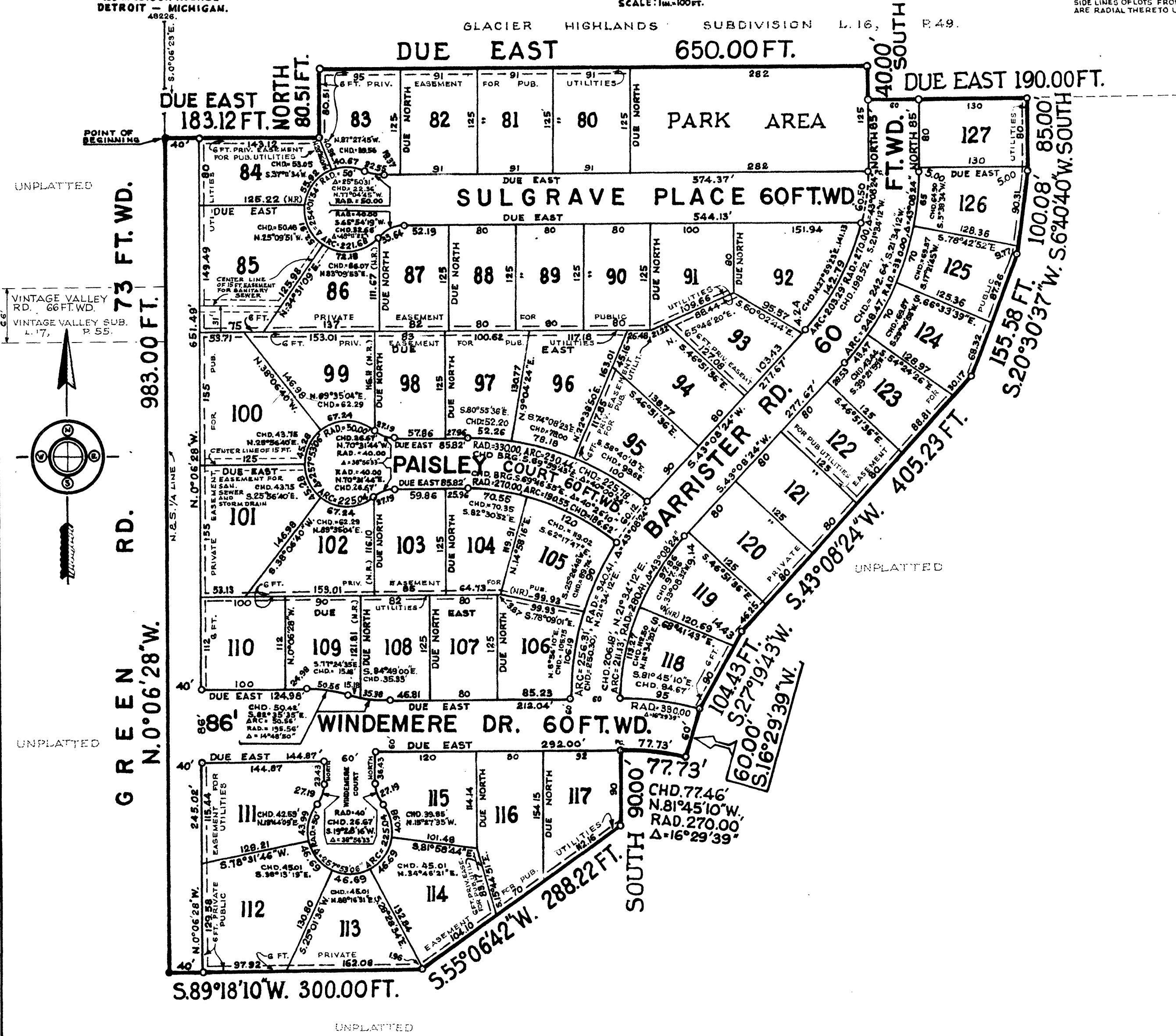


MASON I. BROWN & SON
INCORPORATED
CIVIL ENGINEERS AND LAND SURVEYORS
120 MADISON AVENUE
DETROIT 2, MICHIGAN, 48226



NOTE: ALL DIMENSIONS ARE SHOWN IN FEET AND DECIMALS THEREOF
ALL CURVILINEAR DIMENSIONS ARE SHOWN ALONG THE ARC.
SIDE LINES OF LOTS FRONTING ON CURVILINEAR STREET LINES
ARE RADIAL THERETO UNLESS OTHERWISE NOTED AS (N.R.)

GLACIER HIGHLANDS SUBDIVISION L. 16, P. 49.



DESCRIPTION

The land embraced in the annexed plat of "GLACIER HIGHLANDS SUBDIVISION NO. 3" of part of W. 1/2 of S.E. 1/4 of Section 23, T. 2 S., R. 6 E., City of Ann Arbor, Washtenaw County, Michigan and comprises Lots 80 to 127 inclusive is described as follows: Beginning at a point on the North and South 1/4 Line of said Section 23 which point is distant South 0 degrees 06 minutes 28 seconds East 1054.93 feet along said North and South 1/4 Section Line from the center of said Section 23; thence along the South Line of Glacier Highlands Subdivision (Recorded in Liber 16 of Plats, Page 49, Washtenaw County Records) due East 183.12 feet and due North 80.51 feet and due East 650.00 feet and due South 40.00 feet and due East 190.00 feet; thence due South 85.00 feet; thence South 6 degrees 40 minutes 40 seconds West 100.08 feet; thence South 20 degrees 30 minutes 37 seconds West 155.58 feet; thence South 43 degrees 08 minutes 24 seconds West 405.23 feet; thence South 27 degrees 19 minutes 43 seconds West 104.43 feet; thence South 16 degrees 29 minutes 39 seconds West 60.00 feet; thence Westerly on a curve to the left, radius 270.00 feet, an arc distance of 77.73 feet, chord of said curve bears North 81 degrees 45 minutes 10 seconds West 77.46 feet and central angle is 16 degrees 29 minutes 39 seconds; thence due South 90.00 feet; thence South 55 degrees 06 minutes 42 seconds West 288.22 feet; thence South 89 degrees 18 minutes 10 seconds West 300.00 feet; thence along the North and South 1/4 Line of said Section 23 North 0 degrees 06 minutes 28 seconds West 983.00 feet to the point of beginning.

SURVEYOR'S CERTIFICATE

I hereby certify that the Plat hereon delineated is a correct one, and that permanent metal monuments consisting of iron rods not less than one-half inch in diameter and 36-inches in length, encased in concrete cylinders 4-inches in diameter and 36-inches in length, have been set at points marked thus (o) as thereon shown at all angles in the boundaries of the land platted, at all intersections of the lines of streets, and at intersections of the lines of streets with the boundaries of the Plat.

Prepared and Drafted by William G. Carlson
WILLIAM G. CARLSON
Registered Land Surveyor No. 14759
Professional Engineer No. 14759
120 Madison Avenue
Detroit, Michigan 48226

"GLACIER HIGHLANDS SUBDIVISION NO 3"

SHEET 2
OF 2 SHEETS

OF PART OF W.1/2 OF S.E.1/4 OF SECTION 23, T.2 S., R.6 E.

CITY OF ANN ARBOR, WASHTENAW COUNTY, MICHIGAN.

MASON L. BROWN & SON
INCORPORATED
CIVIL ENGINEERS AND LAND SURVEYORS
180 MADISON AVENUE
DETROIT - MICHIGAN.

APPROVAL BY COUNTY PLAT BOARD

This plat was approved on the 7th day of June, 1967.
by the Washtenaw County Plat Board.

Patricia Newkirk Hardy (County Register of Deeds)
John Flook (County Drain Commissioner)
by Agnes L. Turner (Deputy County Drain Commissioner)
J. Martin Rempp (Auditor)
John P. Cook (Auditor)
Herbert G. Loeffler (Auditor)

DEDICATION

KNOW ALL MEN BY THESE PRESENTS, That we, the Glacier Highlands, Inc., a Michigan Corporation by John C. Stegeman, President and D. R. Wisely, Vice President-Secretary, as Proprietors, have caused the land embraced in the annexed plat to be surveyed, laid out and platted, to be known as "GLACIER HIGHLANDS SUBDIVISION NO. 3" of part of W. 1/2 of S.E. 1/4 of Section 23, T. 2 S., R. 6 E., City of Ann Arbor, Washtenaw County, Michigan, and that the private easements shown on said plat are hereby reserved for public utilities and that the streets, as shown on said plat are hereby dedicated to the use of the public. ^{and park area}

KNOW FURTHER THAT ACCESS TO LOTS 84, 85, 100, 101, 110, 111 AND 112 SHALL NOT BE FROM GREEN ROAD.

WITNESSES:

Robert G. Schram by John C. Stegeman
ROBERT G. SCHRAM JOHN C. STEGEMAN, President
Sonya L. Hansen by D. R. Wisely
SONYA L. HANSEN D. R. WISELY, Vice President-Secretary
2638 Bedford Avenue, Ann Arbor, Michigan
3720 Meadow Lane, Saline, Michigan

Corporation has no corporate seal

CERTIFICATE OF MUNICIPAL APPROVAL

I hereby certify that this plat has been approved by the City Council of the City of Ann Arbor at a regular meeting held 6 March, 1967, and is in compliance with Sec. 19a and that the width of lots is in compliance with requirements of Sec. 30, 172 of 1929 as amended.

John P. Bentley
John P. Bentley, City Clerk

ACKNOWLEDGEMENT

STATE OF MICHIGAN)
COUNTY OF WASHTENAW) S.S.

On this 10 day of Jan. A.D. 1967, before me, a Notary Public in and for said County appeared John C. Stegeman, President and D. R. Wisely, Vice-President and Secretary to me personally known, who being each by me duly sworn, did say that they are the President and Vice-President and Secretary respectively of Glacier Highlands, Inc., a Michigan Corporation and that said instrument was signed in behalf of said Corporation by authority of its Board of Directors, and that said John C. Stegeman and D. R. Wisely acknowledged said instrument to be the free act and deed of said Corporation.

My Commission Expires: MAY 30, 1970.

Hilbert Beyer
HILBERT BEYER
Notary Public, Washtenaw Co., Michigan

CERTIFICATE OF APPROVAL BY THE CITY PLANNING COMMISSION

This plat was approved by the Planning Commission of the City of Ann Arbor, Michigan at a meeting held on the 14th day of February, 1967.

Richard W. Lavelly (Chairman)
Claude L. Johnson (Secretary)
Keith F. Weiland (VICE-CHAIRMAN)

TAX CERTIFICATE

OFFICE OF THE COUNTY TREASURER, WASHTENAW COUNTY, MICHIGAN

I hereby certify, that there are no tax liens or titles held by the State on the lands described above, and that there are no tax liens or titles held by individuals on said lands for the five years preceding the 31 day of May, 1967, and that the taxes for said period of five years are paid, as shown by the records of this office. This certificate does not apply to taxes, if any, now in process of collecting for Township, City or Village collecting officers.

Sylvester A. Leonard
Sylvester A. Leonard (County Treasurer)

COPY

Recorder's Office
Washtenaw County,) S. S.
Plat of Glacier Highlands
Subdivision No. 3
Recorded this 13th day of
July A. D., 1967 at 1:26 O'clock
P.M., in Liber 18 of Plats
on Page 55 & 56
Patricia Newkirk Hardy
Register of Deeds
ORIGINAL ON FILE

I hereby certify that this is a true copy of map or plat forwarded the Register of Deeds for recording.
Date July 12, 1967
FILED IN DEPT. OF TREASURY
Date July 12, 1967
EXAMINED AND APPROVED
Date July 13, 1967
Richard E. Leonard
RICHARD E. LEONARD
COUNTY TREASURER
By Richard E. Leonard
Richard E. Leonard - Plat Examiner