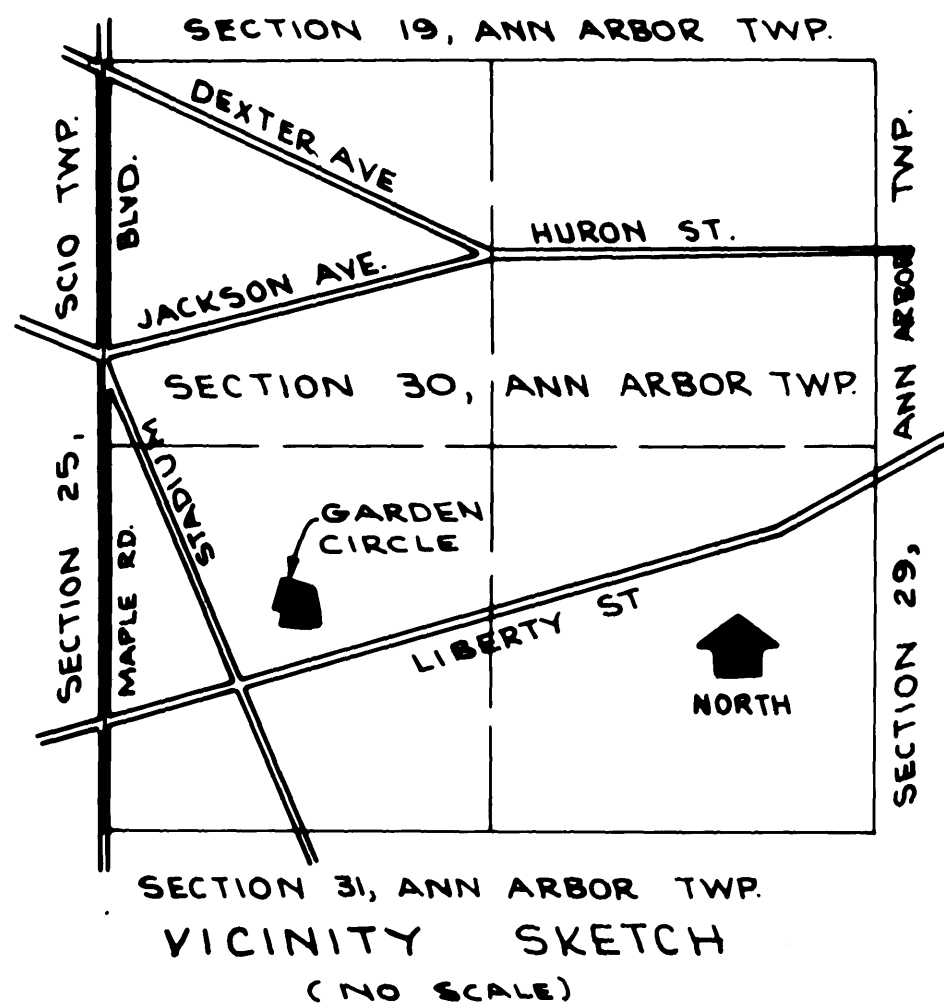


GARDEN CIRCLE SUBDIVISION

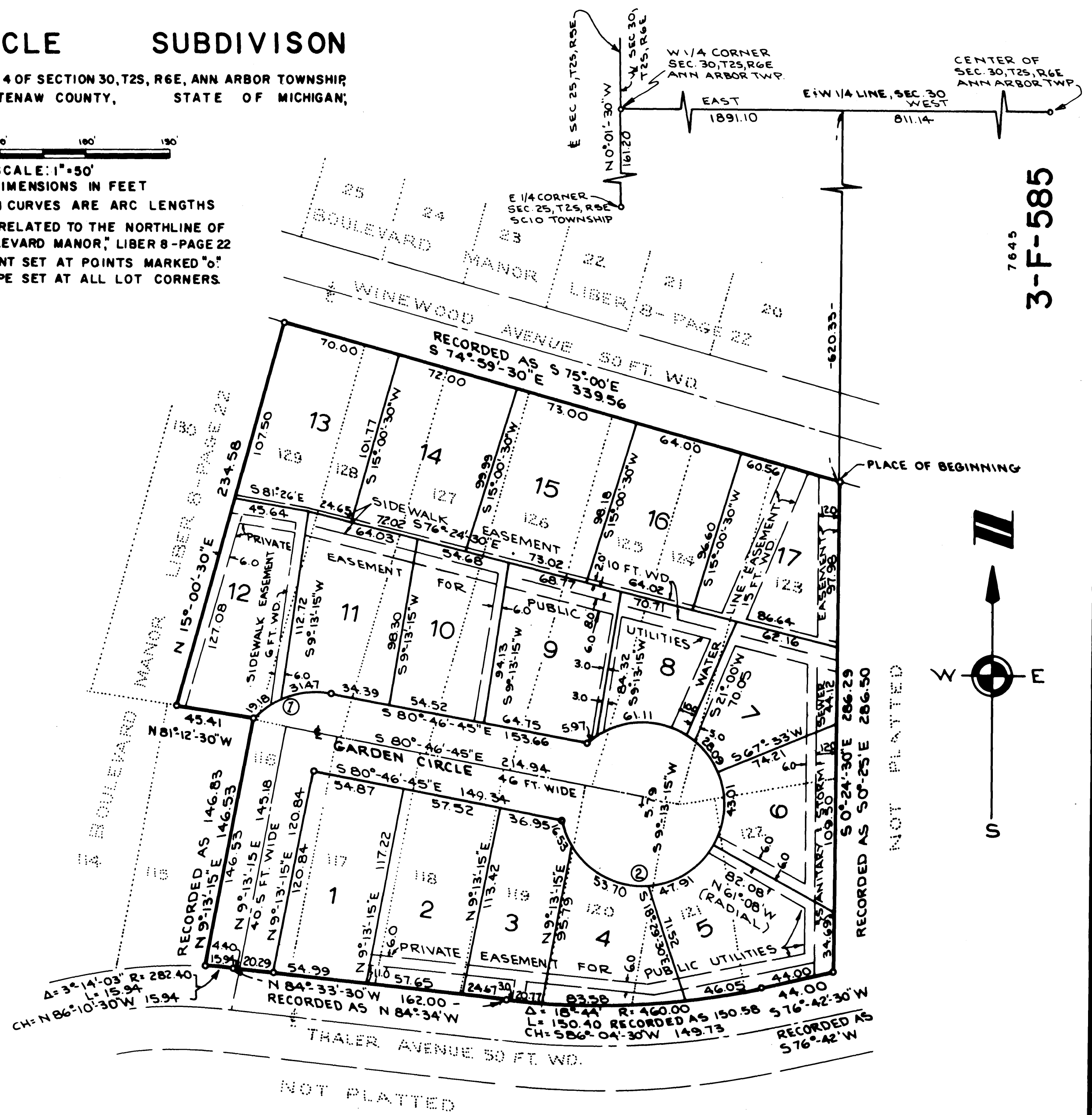
A SUBDIVISION OF PART OF THE SW 1/4 OF SECTION 30, T25, R6E, ANN ARBOR TOWNSHIP,
CITY OF ANN ARBOR, WASHTENAW COUNTY, STATE OF MICHIGAN;



SCALE: 1"=50'
ALL DIMENSIONS IN FEET
ALL DIMENSIONS ON CURVES ARE ARC LENGTHS
ALL BEARINGS ARE RELATED TO THE NORTHLINE OF
THE PLAT OF "BOULEVARD MANOR," LIBER 8 - PAGE 22
CONCRETE MONUMENT SET AT POINTS MARKED "o"
3/4" X 18" IRON PIPE SET AT ALL LOT CORNERS.



CURVE DATA					
CURVE NO	DELTA	RADIUS	ARC LENGTH	CHORD BEARING	CHORD LENGTH
①	57°-44'-45"	50.26	50.65	N10°-20'-55"E	48.53
②	302°-48'-10"	48.50	256.32	S17°-02'-00"W	46.43



7645
3-F-585

NO ACCESS FROM LOTS 1-5 TO THALER AVENUE

ATWELL-HICKS, INC.
110 NORTH FIRST ST., ANN ARBOR, MICHIGAN 48108

PLOTTED BY: [unreadable]
 CHECKED BY: [unreadable]
 DATE: 12/03/94
 1 OF 2

GARDEN CIRCLE SUBDIVISION

A SUBDIVISION OF PART OF THE SW 1/4 OF SECTION 30, T2S, R6E, ANN ARBOR TOWNSHIP, CITY OF ANN ARBOR, WASHTENAW COUNTY, STATE OF MICHIGAN,

SURVEYOR'S CERTIFICATE

I, Allen R. Suggitt, Surveyor certify:

That I have surveyed, divided and mapped the land shown on this plat, described as follows: GARDEN CIRCLE SUBDIVISION a subdivision of part of the SW 1/4 of Section 30, T2S, R6E, Ann Arbor Township, City of Ann Arbor, Michigan, and a replat of Lots 116 through 129 inclusive of "Boulevard Manor" as recorded in Liber 8 of Plats, page 22, Washtenaw County Records, Washtenaw County, State of Michigan. Commencing at the West 1/4 corner of Section 30, T2S, R6E Ann Township, City of Ann Arbor, Michigan, thence East 1891.10 feet along the E & W 1/4 line of said section; thence S 0°-24'-30" E 620.33 feet for a PLACE OF BEGINNING; thence continuing S 0°-24'-30" E 286.29 feet; thence S 76°-42'-30" W 44.00 feet; thence 150.40 feet along the arc of a circular curve to the right, radius 460.00 feet, chord S 86°-04'-30" W 149.73 feet; thence N 84°-33'-30" W 162.00 feet; thence 15.94 feet along the arc of a circular curve to the left, radius 282.40 feet; chord N 86°-10'-30" W 15.94 feet; thence N 9° 13'-15" E 146.53 feet; thence N 81°-12'-30" W 45.41 feet; thence N 15°-00'-30" E 234.58 feet; thence S 74°-59'-30" E 339.56 feet to the Place of Beginning, containing 17 lots numbered 1 through 17 inclusive and containing 2.87 acres of land more or less.

That I have made such survey, land-division and plat by the direction of the owners of such land.

That such plat is a correct representation of all the exterior boundaries of the land surveyed and the subdivision of it.

That the required monuments and lot markers have been located in the ground or that surety has been deposited with the municipality, as required by section 125 of the act.

That the accuracy of survey is within the limits required by section 126 of the act.

That the bearings shown on the plat are expressed as required by section 126 (3) of the act and as explained in the legend.

26 Feb 1974

Atwell-Hicks, Inc.
110 North First Street
Ann Arbor, Michigan 48108

Allen R. Suggitt
Allen R. Suggitt, Vice-President
Registered Engineer No. 12414

PROPRIETOR'S CERTIFICATE

The City of Ann Arbor, A Michigan Municipal Corporation, duly organized and existing under the laws of the State of Michigan by, James E. Stephenson, Mayor and Jerome S. Weiss, City Clerk as proprietor, has caused the land to be surveyed, divided, mapped and dedicated as represented on this plat and that the Street is for the use of the public; that the public utility easements are private easements and that all other easements are for the uses shown on the plat. NO ACCESS FROM LOTS 1-5 TO THALER AVENUE.

City of Ann Arbor
City Hall
Ann Arbor, Michigan 48108

Robert L. Johnson
Witness
ROBERT L. JOHNSON

James E. Stephenson
James E. Stephenson, Mayor

James E. Dillon
Witness
JAMES E. DILLON

Jerome S. Weiss
Jerome S. Weiss, City Clerk

ACKNOWLEDGMENT

STATE OF MICHIGAN)
County of Washtenaw) ss.

Personally came before me this 4th day of MARCH A.D., 1974, James E. Stephenson, Mayor and Jerome S. Weiss, Clerk of the above named Michigan Municipal Corporation, to me known to be the persons who executed the foregoing instrument, and to me known to be such Mayor and Clerk of said Corporation, and acknowledged that they executed the foregoing instrument as such officers as the free act and deed of said Corporation, by its authority.

R. Bruce Ladlaw
R. BRUCE LADLAW

Certified true copy of Recorded plat

Allison Green
ALLISON GREEN
STATE TREASURER
By Richard E. Lomay
Richard E. Lomay, Notary Public
Dec. 5, 1974

Notary Public, Washtenaw County, Michigan

My Commission expires DEC 17, 1975

COUNTY TREASURER'S CERTIFICATE

The records in my office shown no unpaid taxes or special assessments for the five years preceding MARCH 7, 1974 involving the lands included in this plat.

Hilary E. L. Goddard
Hilary E. L. Goddard, Treasurer
Washtenaw County, Michigan

COUNTY DRAIN COMMISSIONER'S CERTIFICATE

Approved on MAY 7, 1974 as complying with Section 192 of Act 288, P.A. 1967, and the applicable rules and regulations published by my office in the County of Washtenaw.

Jerome K. Fulton
Jerome K. Fulton, Drain Commissioner

CERTIFICATE OF APPROVAL BY THE CITY PLANNING COMMISSION

This plat was approved by the Planning Commission of the City of Ann Arbor, Michigan at a meeting held on the 26TH day of MARCH, 1974.

John R. Laird
John R. Laird, Chairman
Robert L. Potts
Robert L. Potts, Secretary

CERTIFICATE OF MUNICIPAL APPROVAL

I certify that this plat was approved by City Council of the City of Ann Arbor, at a meeting held 20 MAY, 1974 and was reviewed and found to be in compliance with Act 288, P.A. of 1967. The subdivision is serviced by public sewers and public water. The City of Ann Arbor has legally adopted zoning and subdivision control ordinances and waives the minimum lot size specified in Act 288, P.A. 1967.

Jerome S. Weiss
Jerome S. Weiss, City Clerk

COUNTY PLAT BOARD CERTIFICATE

This plat has been reviewed and is approved by the Washtenaw County Plat Board on August 16, 1974 as being in compliance with all of the provisions of Act 288, P.A. 1967, and the Plat Board's applicable rules and regulations.

Patricia Newkirk Hardy
Patricia Newkirk Hardy, Register of Deeds

Robert M. Harrison
Robert M. Harrison, County Clerk

Hilary E. L. Goddard
Hilary E. L. Goddard, County Treasurer

RECORDING CERTIFICATE

STATE OF MICHIGAN)
Washtenaw County)

This plat was received for record on the 3rd day of December A.D., 1974 at 9:30 A.M. recorded in Liber 20 of Plats on Pages 98 & 99.

Patricia Newkirk Hardy
Patricia Newkirk Hardy, Register of Deeds

7646
3-F-586