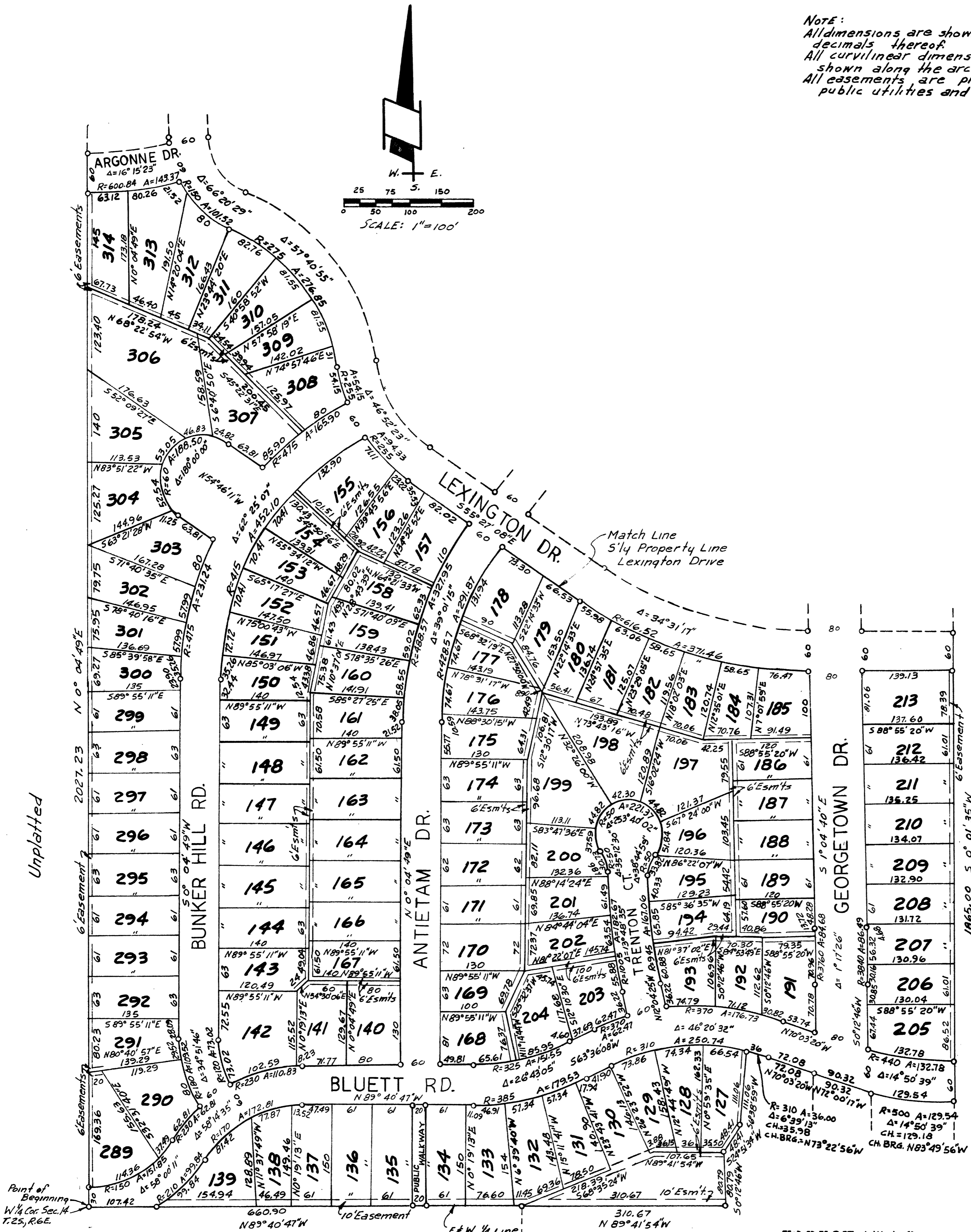


# FOREST HILLS SUB NO 2

PART OF THE W 1/2 OF THE W 1/2 OF SEC. 14 T.2S. R.6E.  
 CITY OF ANN ARBOR WASHTENAW CO MICHIGAN

NOTE:  
 All dimensions are shown in feet and  
 decimals thereof.  
 All curvilinear dimensions are  
 shown along the arc.  
 All easements are private for  
 public utilities and drainage.

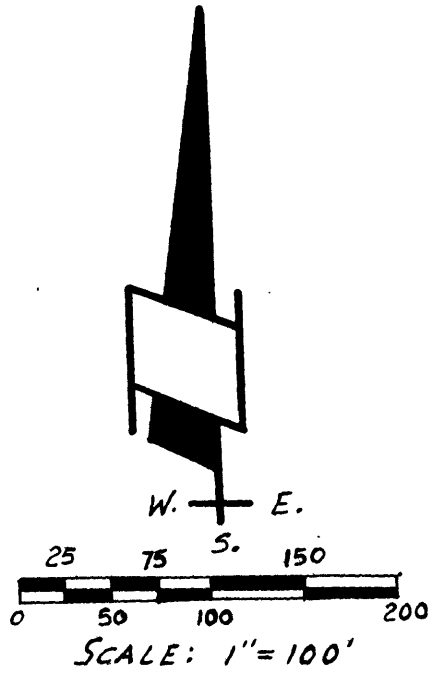


Unplatted

Unplatted

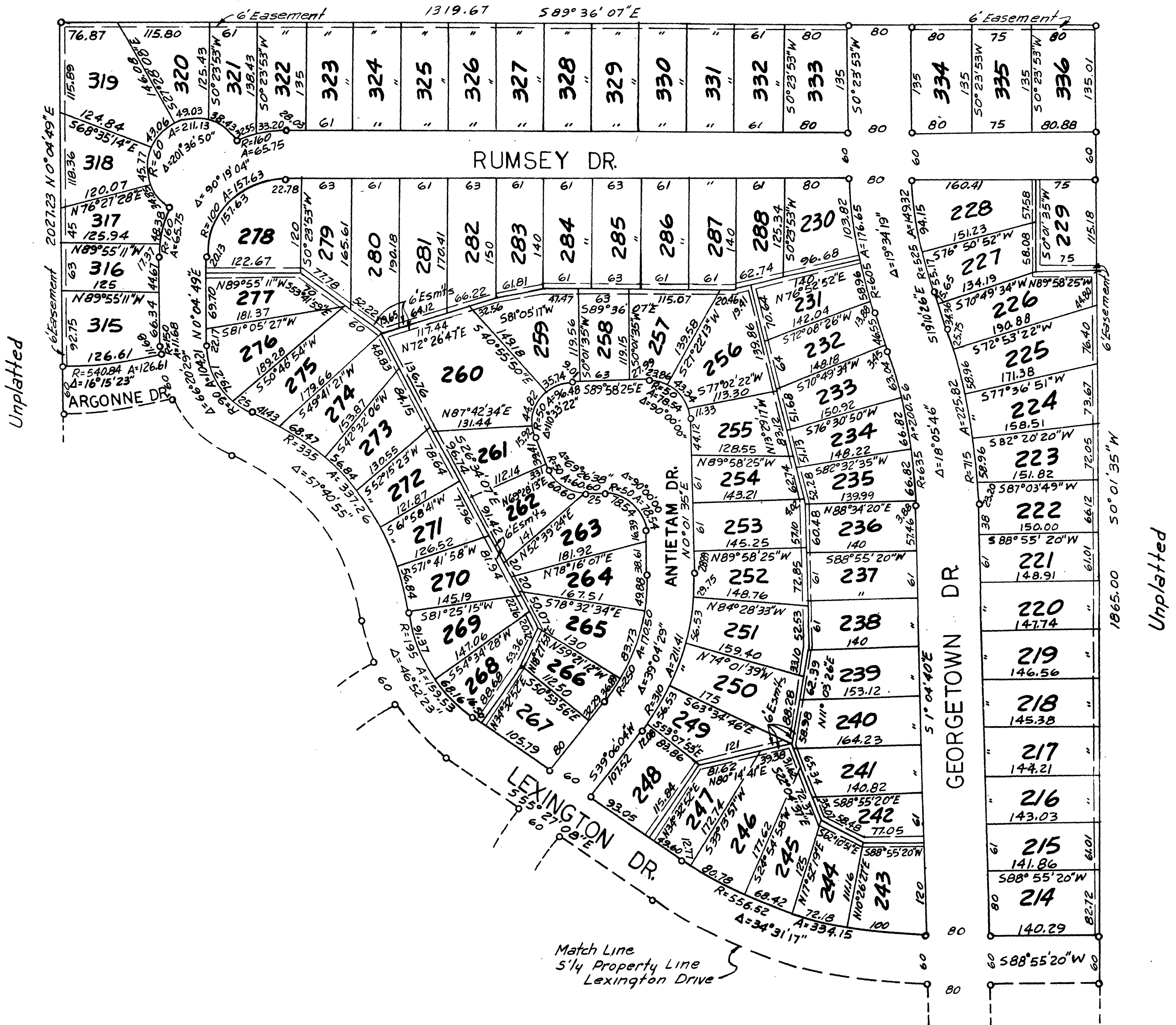
# FOREST HILLS SUB. NO. 2

PART OF THE W. 1/2 OF THE W. 1/2 OF SEC. 14, T.2 S., R.6 E.  
CITY OF ANN ARBOR, WASHTENAW CO, MICHIGAN



NOTE:  
All dimensions are shown in feet and decimals thereof.  
All curvilinear dimensions are shown along the arc.  
All easements are private for public utilities and drainage.

Unplatted



# FOREST HILLS SUB. NO. 2

PART OF THE W. 1/2 OF THE W. 1/2 OF SEC. 14, T. 2 S. R. 6 E.  
CITY OF ANN ARBOR, WASHTENAW CO., MICHIGAN

### DESCRIPTION OF LAND PLATTED

The land embraced in the annexed plat of FOREST HILLS SUB. NO. 2, part of the W. 1/2 of the W. 1/2 of Sec. 14, T. 2 S., R. 6 E., City of Ann Arbor, Washtenaw County, Michigan, is described as follows:

Beginning at the West 1/4 corner of Sec. 14, T. 2 S., R. 6 E., City of Ann Arbor, Washtenaw County, Michigan, thence N. 0° 04' 49" E. 2027.23 feet along the west line of said Sec. 14 to a point; thence S. 89° 36' 07" E. 1319.67 feet to a point; thence S. 0° 01' 35" W. 1865.00 feet to a point, said point being the N. E. corner of Lot 112, FOREST HILLS SUBDIVISION recorded in Liber 16, Pages 12 & 13 of Washtenaw County Plats; thence continuing along the northerly line of said FOREST HILLS SUBDIVISION the following eight courses and distances; 129.54 feet along the arc of a curve to the right, whose radius is 500 feet, internal angle 14° 50' 39", chord 129.18 feet, chord bearing N. 83° 49' 56" W. to a point; N. 72° 00' 17" W. 90.32 feet to a point; N. 70° 03' 20" W. 72.08 feet to a point; 36.00 feet along the arc of a curve to the left, whose radius is 310 feet, internal angle 6° 39' 13", chord 35.98 feet and chord bearing N. 73° 22' 56" W. to a point; S. 6° 38' 59" W. 111.06 feet to a point; S. 24° 51' 34" W. 48.41 feet to a point; S. 0° 12' 46" W. 80.79 feet to a point on the East and West 1/4 line of said Sec. 14; N. 89° 41' 54" W. 310.67 feet along the East and West 1/4 line of said Sec. 14 to a point, said point being the N.W. corner of outlet "A" of said FOREST HILLS SUBDIVISION; thence N. 89° 40' 47" W. 660.90 feet along the East and West 1/4 line of said Sec. 14 to the point of beginning and containing 210 lots numbered 127 through 336 inclusive.

### DEDICATION

KNOW ALL MEN BY THESE PRESENTS, that we, SYLVAN DEVELOPMENT COMPANY, INC. a Michigan Corporation by Bert L. Smokier, President, and Arthur E. Knoff, Secretary, and NEIL O. STAEBLER and BURNETTE STAEBLER, his wife, as proprietors, have caused the land embraced in the annexed plat to be surveyed, laid out and platted to be known as FOREST HILLS SUB. NO. 2, part of the W. 1/2 of the W. 1/2 of Sec. 14, T. 2 S., R. 6 E., City of Ann Arbor, Washtenaw County, Michigan, and the streets and alleys as shown on said plat are hereby dedicated to the use of the public, and that the easements indicated on said plat are not dedicated to the public but reserved for public utilities, and any other use designated hereon, and no permanent structures are to be located within said easements. Signed and sealed in the presence of:

SYLVAN DEVELOPMENT COMPANY, INC.  
200 Northland Towers  
Southfield, Mich.

Priscilla E. Harper  
Priscilla E. Harper (Witness)

Ruth A. Chesney  
Ruth A. Chesney (Witness)

Kenneth Heininger  
Kenneth Heininger (Witness)

Katharine B. Grenholm  
Katharine B. Grenholm (Witness)

Bert L. Smokier  
Bert L. Smokier, President

Arthur E. Knoff  
Arthur E. Knoff, Secretary

Neil O. Staebler  
Neil O. Staebler  
601 Huron View  
Ann Arbor, Mich.

Burnette Staebler  
Burnette Staebler

### CERTIFICATION OF APPROVAL BY THE CITY PLANNING COMMISSION

The plat was approved by the Planning Commission of the City of Ann Arbor, Michigan, at a meeting held on the 19th day of MARCH 1964

Richard A. Ware  
Richard A. Ware, Chairman

Robert V. Galbreath  
Robert V. Galbreath, Secretary

### SURVEYOR'S CERTIFICATE

I hereby certify that the plat hereon delineated is a correct one and that permanent metal monuments consisting of bars not less than one-half inch in diameter and 36 inches in length, or shorter bars of not less than one-half inch in diameter lapped over each other at least 6 inches with an overall length of not less than 36 inches encased in a concrete cylinder at least 4 inches in diameter and 36 inches in depth have been placed at points marked thus (O) as thereon shown at all angles in the boundaries of the land platted, at all the intersections of streets, intersections of alleys, or of streets and alleys, and at the intersections of streets and alleys with the boundaries of the plat as shown on said plat.

Eugene F. Zeimet  
EUGENE F. ZEIMET  
Registered Professional Engineer  
Number 9209  
200 Northland Towers  
Southfield, Mich.

### COUNTY TREASURER'S CERTIFICATE

Office of County, Treasurer, Washtenaw County, I hereby certify that there are no tax liens or titles held by the State on the lands described hereon, and that there are no tax liens or titles held by individuals on said lands, for the five years preceding the 3rd day of April 1964 and that the taxes for said period of five years are all paid, as shown by the records of this office. This certificate does not apply to taxes if any, now in process of collection by Township, City or Village collecting officers.

Sylvester A. Leonard  
Sylvester Leonard (County Treasurer)

### CERTIFICATE OF MUNICIPAL APPROVAL

The plat was approved by the Common Council of the City of Ann Arbor at a meeting held March 30 1964 and that the width of lots is in compliance with requirements of Section 30, Act 172, of 1929, as amended, and is in compliance with Section 19a.

Plat of Forest Hills Sub. No. 2  
was recorded this 24th day of April A.D., 1964 at 10:10 o'clock  
A.M. in Liber 17 of Plats  
on Pages 12-13-14

Patricia Newkirk Hardy  
Register of Deeds  
ORIGINAL ON FILE

Fred J. Looker  
Fred J. Looker, Clerk

### ACKNOWLEDGMENT

STATE OF MICHIGAN )  
COUNTY OF OAKLAND )

On this 20th day of February 1964, before me, a Notary Public in and for said County, personally came the above named Bert L. Smokier and Arthur E. Knoff to me personally known, who being each by me duly sworn did say that they are the President and Secretary respectively of the SYLVAN DEVELOPMENT COMPANY, INC., a Michigan Corporation, and that the seal affixed to said instrument is the corporation seal of said corporation and that the said instrument was signed and sealed in behalf of said corporation by authority of its Board of Directors; and the said officers acknowledged the said instrument to be the free act and deed of said corporation.

Mary M. Lemcke  
Mary M. Lemcke, Notary Public, Oakland County  
My Commission Expires August 13, 1967

### ACKNOWLEDGMENT

STATE OF MICHIGAN )  
COUNTY OF WASHTENAW ) ss

On this 22nd day of February, 1964, before me, a Notary Public in and for said County, personally came the above named Neil O. Staebler and Burnette Staebler, his wife, known to me to be the persons who executed the above dedication and acknowledged the same to be their free act and deed.

Kenneth Heininger  
Kenneth Heininger, Notary Public, Washtenaw County  
My Commission Expires October 26, 1964

### APPROVAL OF COUNTY PLAT BOARD

This plat was approved on the 8th day of April 1964 by the Washtenaw County Plat Board.

I hereby certify this copy is a true copy of map or plat forwarded the Register of deeds for recording.  
Date April 22, 1964  
FILED IN AUDITOR GENERAL'S DEPT.  
Date May 1, 1964  
Date April 22, 1964  
By Richard E. Lomax  
Richard E. Lomax - Plat Examiner

Patricia Newkirk Hardy  
Patricia Newkirk Hardy (County Register of Deeds)

J. Martin Rempff  
J. Martin Rempff (Auditor)

Herbert G. Loeffler  
Herbert G. Loeffler (Auditor)

John P. Cook  
John P. Cook (Auditor)

John H. Flook  
John H. Flook (County Drain Commissioner)