

44
June 23-22
L. H. H. H.

PLAT OF EDGEWOOD SUBDIVISION IN THE CITY OF ANN ARBOR Washtenaw County, Michigan

Part of N. E. ¼ of the N. W. ¼ of Sec. 32, T. 2 S., R. 6 E.
Scale: 1 inch = 100 feet

DEDICATION

KNOW ALL MEN BY THESE PRESENTS, That I, Martha M. Wilder as proprietress, have caused the land embraced in the annexed plat to be surveyed, laid out and platted, to be known as Edgewood Subdivision in the City of Ann Arbor, Washtenaw County, Michigan, and that the streets and alleys as shown on said plat are hereby dedicated to the use of the public.

..... [L. S.]

Signed and sealed in presence of

Helen M. Citing
William M. Laird

STATE OF MICHIGAN, } ss.
County of Washtenaw,

On this 27th day of March, 1918, before me, a Notary Public in and for said county, personally came the above named Martha M. Wilder, known to me to be the person who executed the above dedication, and acknowledged the same to be her free act and deed.

Helen M. Citing
Notary Public, Washtenaw Co., Michigan.

My commission expires December 16, 1920.

DEDICATION

KNOW ALL MEN BY THESE PRESENTS, That we, Ann Arbor Land and Investment Company, a Michigan corporation, by Frank A. Stivers, President and Charles E. Gallup, Secretary, as proprietor, have caused the land embraced in the annexed plat to be surveyed, laid out and platted, to be known as Edgewood Subdivision in the City of Ann Arbor, Washtenaw County, Michigan, and that the streets and alleys as shown on said plat are hereby dedicated to the use of the public.

ANN ARBOR LAND AND INVESTMENT COMPANY.

Frank A. Stivers President.
Charles E. Gallup Secretary.

Signed and sealed in the presence of:

Helen M. Citing
William M. Laird

STATE OF MICHIGAN, } ss.
County of Washtenaw,

On this 27th day of March, A. D. 1918,

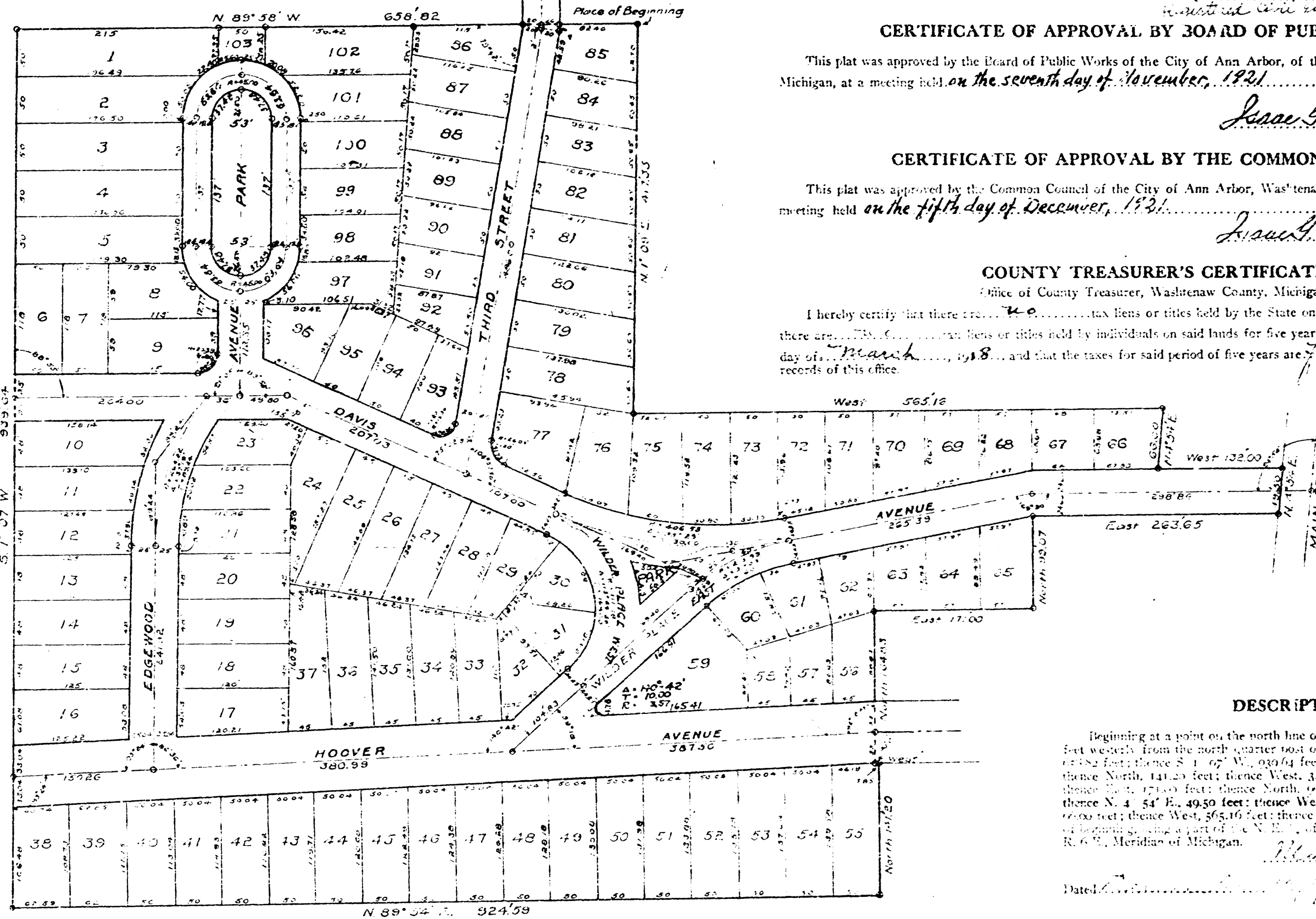
before me, *Helen M. Citing*, a Notary Public in and for said county, appeared Frank A. Stivers and Charles E. Gallup, to me personally known, who being each by me duly sworn did say that they are the President and Secretary respectively, of the Ann Arbor Land and Investment Company, a Michigan corporation, and that the seal affixed to said instrument is the corporate seal of said corporation and that said instrument was signed and sealed in behalf of said corporation by authority of its Board of Directors and the said Frank A. Stivers and Charles E. Gallup acknowledged said instrument to be the free act and deed of said corporation.

Helen M. Citing
Notary Public, Washtenaw Co., Michigan.

My Commission expires December 16, 1920.

DESCRIPTION

Beginning at a point on the north line of Section 32, T. 2 S., R. 6 E., 667.18 feet westerly from the north quarter post of Section 32; thence N. 89° 58' W., 658.82 feet; thence S. 1° 07' W., 939.64 feet; thence N. 89° 54' E., 924.59 feet; thence North, 141.20 feet; thence West, 3.85 feet; thence North, 164.83 feet; thence East, 171.00 feet; thence North, 69.07 feet; thence East, 263.65 feet; thence N. 4° 54' E., 49.50 feet; thence West, 132.00 feet; thence N. 4° 54' E., 65.00 feet; thence West, 565.16 feet; thence N. 1° 07' E., 417.33 feet to the place of beginning, being a part of the N. E. ¼ of the N. W. ¼ of Section 32, T. 2 S., R. 6 E., Meridian of Michigan.



Note - Chord Distances are given on curves.

SURVEYOR'S CERTIFICATE

I hereby certify that the plat hereon delineated is a correct one, and that permanent monuments, consisting of iron pipes, three-quarters of an inch in diameter and two feet long, have been planted at all points marked thus, O., as thereon shown, at all angles in the boundaries of the land platted, and at all intersections of streets or streets and alleys.

W. H. Carey
Registered Civil Engineer and Surveyor.

CERTIFICATE OF APPROVAL BY BOARD OF PUBLIC WORKS

This plat was approved by the Board of Public Works of the City of Ann Arbor, of the County of Washtenaw, State of Michigan, at a meeting held on the seventh day of November, 1921.

Isaac A. Reynolds
Clerk.

CERTIFICATE OF APPROVAL BY THE COMMON COUNCIL

This plat was approved by the Common Council of the City of Ann Arbor, Washtenaw County, State of Michigan, at a meeting held on the fifth day of December, 1921.

Isaac A. Reynolds
Clerk.

COUNTY TREASURER'S CERTIFICATE

Office of County Treasurer, Washtenaw County, Michigan

I hereby certify that there are no tax liens or titles held by the State on the lands described below, and that there are no tax liens or titles held by individuals on said lands for five years preceding the 27th day of March, 1918, and that the taxes for said period of five years are fully paid as shown by the records of this office.

DESCRIPTION

Beginning at a point on the north line of Section 32, T. 2 S., R. 6 E., 667.18 feet westerly from the north quarter post of Section 32; thence N. 89° 58' W., 658.82 feet; thence S. 1° 07' W., 939.64 feet; thence N. 89° 54' E., 924.59 feet; thence North, 141.20 feet; thence West, 3.85 feet; thence North, 164.83 feet; thence East, 171.00 feet; thence North, 69.07 feet; thence East, 263.65 feet; thence N. 4° 54' E., 49.50 feet; thence West, 132.00 feet; thence N. 4° 54' E., 65.00 feet; thence West, 565.16 feet; thence N. 1° 07' E., 417.33 feet to the place of beginning, being a part of the N. E. ¼ of the N. W. ¼ of Section 32, T. 2 S., R. 6 E., Meridian of Michigan.

Walter E. Reynolds
County Treasurer.

Dated June 23, 1922

CERTIFICATE OF APPROVAL BY THE BOARD OF COUNTY AUDITORS

This plat was approved on the 5th day of June, 1922, by the Board of County Auditors of the County of Washtenaw, State of Michigan.

W. H. Carey
William M. Laird

REGISTER OF DEEDS
Washtenaw County

RECEIVED for Record, the 26th

day of June, A. D. 1922

at 10:30 o'clock A. M. and received

Lib 4 of Plat No 44

P. H. Jones
Register of Deeds

Council