

CORNELIUS W. TUOMY SUBDIVISION

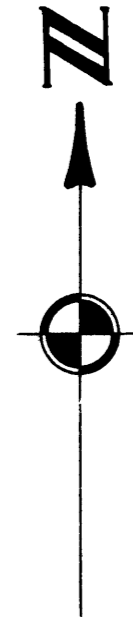
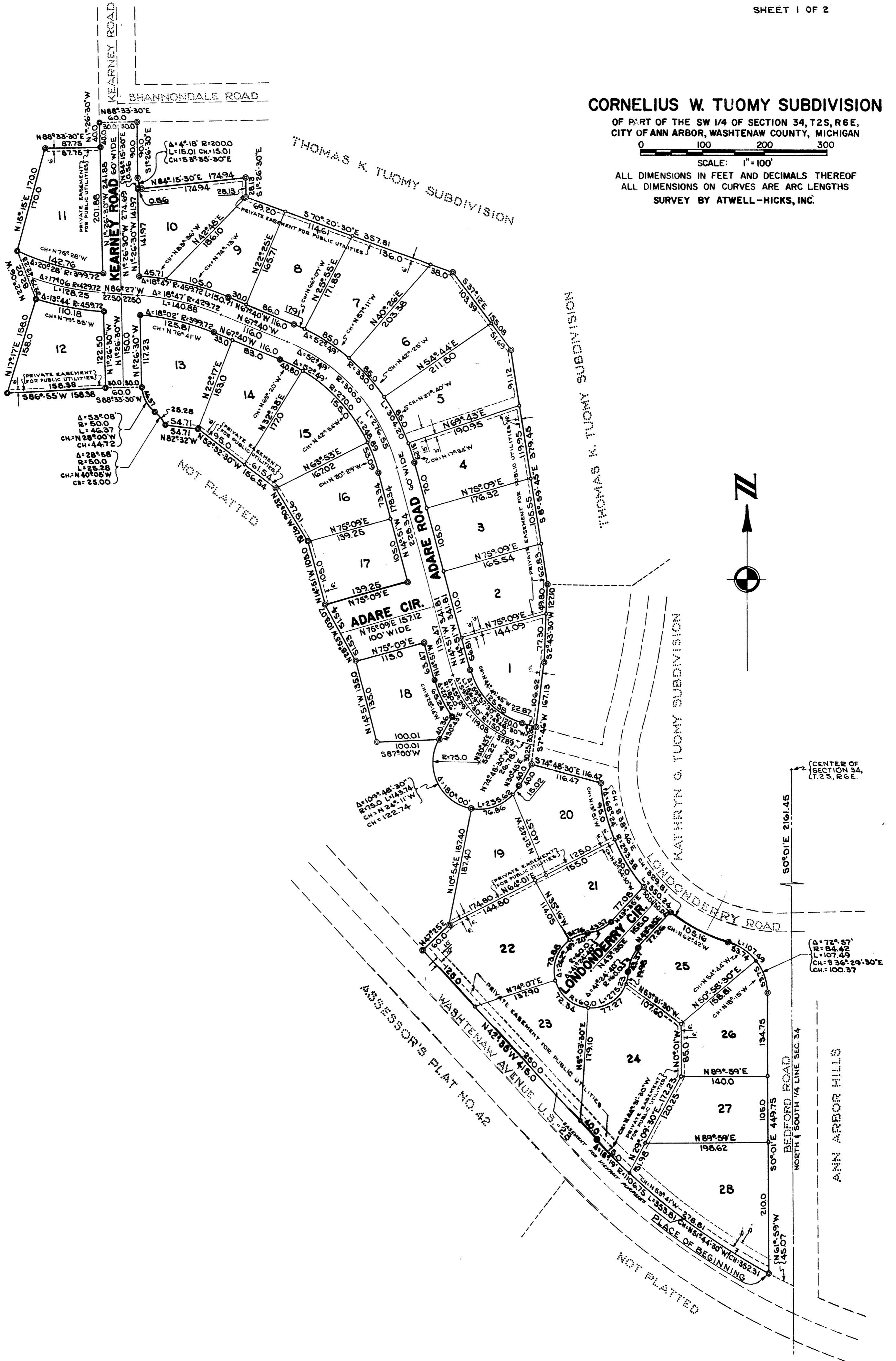
OF PART OF THE SW 1/4 OF SECTION 34, T2S, R6E,
CITY OF ANN ARBOR, WASHTENAW COUNTY, MICHIGAN

0 100 200 300

SCALE: 1" = 100'

ALL DIMENSIONS IN FEET AND DECIMALS THEREOF
ALL DIMENSIONS ON CURVES ARE ARC LENGTHS
SURVEY BY ATWELL-HICKS, INC.

NOT PLATTED



(CENTER OF SECTION 34, T2S, R6E)

(Δ=72°57', R=84.42, L=107.43, CH=936°29'30"E, CH=100.37)

NOT PLATTED

WASHTENAW AVENUE U.S. PLAT NO. 42

ANN ARBOR HILLS

BEDFORD ROAD NORTH & SOUTH 1/4 LINE SEC. 34

PLACE OF BEGINNING

CORNELIUS W. TUOMY SUBDIVISION

OF PART OF THE SW 1/4 OF SECTION 34, T2S, R6E, CITY OF ANN ARBOR, WASHTENAW COUNTY, MICHIGAN

0 100 200 300

SCALE: 1"=100'

ALL DIMENSIONS IN FEET AND DECIMALS THEREOF

ALL DIMENSIONS ON CURVES ARE ARC LENGTHS

SURVEY BY ATWELL-HICKS, INC.

DEDICATION

KNOW ALL MEN BY THESE PRESENTS, that we Cornelius W. Tuomy, a single man and Kathryn G. Tuomy, a single woman, as proprietors, have caused the land embraced in the annexed plat to be surveyed, laid out and platted to be known as CORNELIUS W. TUOMY SUBDIVISION of part of the SW 1/4 of Section 34, T2S, R6E, City of Ann Arbor, Washtenaw County, Michigan, and that the Roads and Circles as shown on said Plat are hereby dedicated to the use of the public.

Signed in the Presence of:

Helen Adcock, Witness; Cornelius W. Tuomy; Robert J. Jagow, Witness; Kathryn G. Tuomy

DESCRIPTION OF LAND PLATTED

The land embraced in the annexed plat of CORNELIUS W. TUOMY SUBDIVISION of part of the SW 1/4 of Section 34, T2S, R6E, City of Ann Arbor, Washtenaw County, Michigan is described as follows:

Commencing at the center of Section 34, T2S, R6E, City of Ann Arbor, Washtenaw County, Michigan; thence along the North and South 1/2 line of said Section 34, S 0° -01' E 2161.45 feet; thence 45.07 feet in the arc of a circular curve concave to the NE, radius 1106.75 feet, chord N 61° -59' W 45.07 feet for a PLACE OF BEGINNING; thence 353.81 feet in the arc of a circular curve concave to the NE, radius 1106.75 feet, chord N 51° -44' -30" W 352.31 feet; thence N 42° -35' W 415.0 feet; thence N 47° -25' E 60.0 feet; thence N 10° -54' E 187.40 feet; thence 143.74 feet in the arc of a circular curve concave to the NE, radius 75.0 feet, chord N 24° -11' W 122.74 feet; thence S 87° -00' W 100.01 feet; thence N 14° -51' W 135.0 feet; thence N 28° -53' W 103.07 feet; thence N 14° -51' W 195.0 feet; thence N 32° -06' W 97.81 feet; thence N 52° -52' -30" W 156.54 feet; thence N 82° -32' W 54.71 feet; thence 25.28 feet in the arc of a circular curve concave to the SW, radius 50.0 feet, chord N 40° -05' W 25.00 feet; thence 46.37 feet in the arc of a circular curve concave to the NE, radius 50.0 feet, chord N 28° -00' W 44.72 feet; thence S 88° -33' -30" W 60.0 feet; thence S 86° -55' W 158.38 feet; thence N 17° -17' E 158.0 feet; thence N 22° -06' W 82.02 feet; thence N 15° -15' E 170.0 feet; thence N 88° -33' -30" E 87.75 feet; thence N 1° -26' -30" W 40.0 feet; thence N 88° -33' -30" E 60.0 feet; thence S 1° -26' -30" E 90.00 feet; thence 15.01 feet in the arc of a circular curve concave to the East, radius 200.0 feet, chord S 3° -35' -30" E 15.01 feet; thence N 84° -15' -30" E 174.94 feet; thence S 1° -26' -30" E 28.13 feet; thence S 70° -20' -30" E 357.81 feet; thence S 37° -12' E 155.08 feet; thence S 8° -59' -45" E 379.45 feet; thence S 2° -43' -30" W 127.10 feet; thence S 7° -46' W 167.13 feet; thence S 74° -48' -30" E 116.47 feet; thence 350.24 feet in the arc of a circular curve concave to the NE, radius 293.38 feet, chord S 38° -46' E 329.81 feet; thence 107.49 feet in the arc of a circular curve concave to the SW, radius 84.42 feet, chord S 36° -29' -30" E 100.37 feet; thence S 0° -01' E 449.75 feet to the Place of Beginning, containing 28 Lots numbered 1 through 28 inclusive.

CERTIFICATE OF MUNICIPAL APPROVAL

This plat was approved by the Common Council of the City of Ann Arbor at a meeting held October 11, 1960, and that the width of lots is in compliance with requirements of Section 30, Act 172, of 1929, as amended.

Fred J. Hooker, Clerk

COUNTY TREASURER'S CERTIFICATE

Office of County Treasurer, Washtenaw County

I hereby certify, that there are no tax liens or titles held by the State on the lands described hereon, and that there are no tax liens or titles held by individuals on said lands for the five years preceding the 28th day of February, 1961, and that the taxes for said period of five years are all paid, as shown by the records of this office.

This certificate does not apply to taxes, if any, now in process of collection by township, city or village collecting officers.

W. F. Verner, County Treasurer

ACKNOWLEDGMENT

STATE OF MICHIGAN) County of Washtenaw) ss.

On this 18th day of October, 1960, before me, a Notary Public in and for said county, personally came the above named Cornelius W. Tuomy and Kathryn G. Tuomy known to me to be the persons who executed the above dedication, and acknowledged the same to be their free act and deed.

Helen Adcock, Notary Public, My Commission expires 7-6-62

SURVEYOR'S CERTIFICATE

I hereby certify that the plat hereon delineated is a correct one and that permanent metal monuments consisting of bars not less than one-half inch in diameter and 36 inches in length, or shorter bars of not less than one-half inch in diameter lapped over each other at least 6 inches with an over-all length of not less than 36 inches, encased in a concrete cylinder at least 4 inches in diameter and 36 inches in depth have been placed at points marked thus (@) as thereon shown at all angles in the boundaries of the land platted, at all the intersections of streets, intersections of alleys, or of streets and alleys, and at the intersections of streets and alleys with the boundaries of the plat as shown on said plat.

Robert J. Jagow, Registered Land Surveyor # 6998

CERTIFICATE OF APPROVAL BY THE CITY PLANNING COMMISSION

This plat was approved by the Planning Commission of the City of Ann Arbor, Michigan at a meeting held on the 25th day of OCTOBER, 1960.

Richard A. Ware, Chairman; William J. Bott, Secretary

I hereby certify this copy is a true copy of map or plat forwarded the Register of deeds for recording.

Date April 13, 1961 FILED IN AUDITOR GENERAL'S DEPT.

Date April 19, 1961 EXAMINED AND APPROVED

Date April 12, 1961

Otis M. Smith, Auditor General

Richard E. Lomax, Plat Examiner

Register's Office, Washtenaw County, Plat of Cornelius W. Tuomy Subdivision, was Recorded this 17th day of April A.D., 1961 at 2:25 P.M. in Liber 15 of plats on Page 49 of 50 Patricia Newkirk Hardy, Register of Deeds

CERTIFICATE AS TO STATE TRUNK LINE OR FEDERAL AID ROADS

We hereby certify that said plat appears to include land located on a state trunk line or federal aid road.

Patricia Newkirk Hardy, County Register of Deeds; John H. Flook, County Drain Commissioner; J. Martin Rempp, Auditor; Herbert G. Loeffler, Auditor; John P. Cook, Auditor

APPROVAL BY COUNTY PLAT BOARD

This plat was approved on the 2nd day of March, 1961, by the Washtenaw County Plat Board.

Patricia Newkirk Hardy, County Register of Deeds; John H. Flook, County Drain Commissioner; J. Martin Rempp, Auditor; Herbert G. Loeffler, Auditor; John P. Cook, Auditor

APPROVED DATE 4-7-61

John C. Mackie, State Highway Commissioner

BY