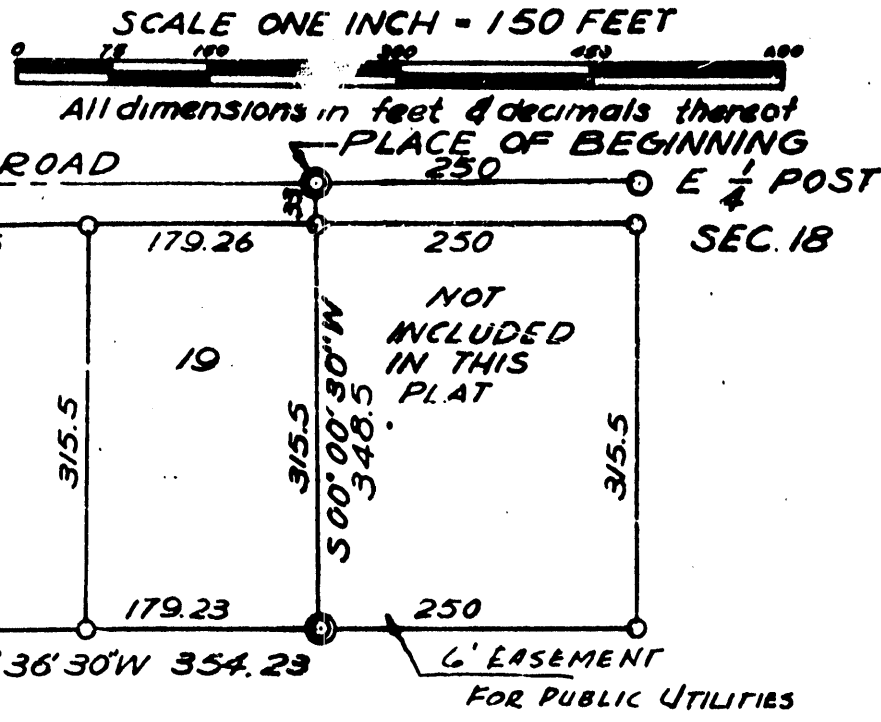


(ORIGINAL)  
**"BOWEN'S SUBDIVISION"**

OF  
 PART OF THE EAST HALF OF THE SOUTHEAST  
 QUARTER OF SECTION 18, TOWN 2 SOUTH  
 RANGE 6 EAST, ANN ARBOR TOWNSHIP  
 WASHTENAW COUNTY  
 MICHIGAN



E NEWPORT ROAD

NORTH 2596.74

SOUTH 2346.70

6' EASEMENT FOR PUBLIC UTILITIES

**DEDICATION**

KNOW ALL MEN BY THESE PRESENTS, that we I, Winfred G. Bowen, a widower, Jerry B. Emerson and Doris M. Emerson husband and wife, as proprietors, have caused the land embraced in the annexed plat to be surveyed, laid out and platted, to be known as BOWEN'S SUBDIVISION of part of the East half of the Southeast quarter of section 18, Town 2 South, Range 6 East, Ann Arbor Township, Washtenaw County, Michigan and that the streets as shown on said plat are hereby dedicated to the use of the public.

Signed and Sealed in the Presence of:

Herbert S. Hicks (Witness) Winfred G. Bowen (L.S.)  
 Eleanor Kilpatrick (Witness) Jerry B. Emerson (L.S.)  
 Doris M. Emerson (L.S.)

**ACKNOWLEDGMENT**

STATE OF MICHIGAN } ss.  
 County of Washtenaw }  
 On this 27th day of April, 1951, before me, a Notary Public in and for said County, personally came the above named Winfred G. Bowen, a widower, Jerry B. Emerson and Doris M. Emerson, husband and wife known to me to be the persons who executed the above dedication, and acknowledged the same to be their free act and deed.  
 Eleanor Kilpatrick  
 Notary Public, Washtenaw County  
 My Commission expires March 29, 1952.

**DESCRIPTION OF LAND PLATTED**

The land embraced in the annexed plat of BOWEN'S SUBDIVISION of part of the East half of the Southeast quarter of section 18, Town 2 South, Range 6 East, Ann Arbor Township, Washtenaw County, Michigan is described as follows:

Commencing at the East quarter post of Section 18, T2S, R6E, Ann Arbor Township, Washtenaw County, Michigan, and running thence South 89°-36'-30" West 250.0 feet for a PLACE OF BEGINNING; thence South 0°-00'-30" West 348.5 feet; thence South 89°-36'-30" West 354.23 feet; thence North 0°-00'-30" West 97.00 feet; thence South 89°-36'-30" West 475.00 feet; thence South 2346.70 feet; thence West 252.00 feet to the center line of Newport Road; thence North along the center line of Newport Road 2596.74 feet to the center line of Bird Road; thence North 89°-36'-30" East along the center line of Bird Road 1081.26 feet to the place of beginning, being part of the East half of the Southeast quarter of said Section 18.

**MUNICIPAL APPROVAL**

This plat was approved by the Township Board of the Township of Ann Arbor at a meeting held April 19, 1951.  
 Ray F. Wurster (Clerk)

**SURVEYOR'S CERTIFICATE**

I hereby certify that the plat hereon delineated is a correct one and that permanent metal monuments consisting of bars not less than one-half inch in diameter and 48 inches in length, or shorter bars of not less than one-half inch in diameter lapped over each other of least 6 inches with an over-all length of not less than 48 inches, encased in a concrete cylinder of least 4 inches in diameter and 48 inches in depth have been placed at points marked thus (...) as thereon shown at all angles in the boundaries of the land platted, at all the intersections of streets, intersections of alleys, or of streets and alleys, and at the intersections of streets and alleys with the boundaries of the plat as shown on said plat.

Herbert S. Hicks (Signature)  
 No. 1715 Registered Land Surveyor or Registered Professional Engineer

**APPROVAL BY BOARD OF COUNTY ROAD COMMISSIONERS**

This plat has been examined and was approved on the 14th day of April, 1951, by the Washtenaw County Board of Road Commissioners.

James C. Hendley (Chairman)  
 Raymond L. Koch (Member)  
 H. L. Frisinger (Member)

**APPROVAL BY BOARD OF COUNTY AUDITORS**

Approved by the Board of County Auditors of Washtenaw County, Michigan, this 27th day of April, 1951.

J. Martin Rempp (Chairman)  
 John E. Walz  
 Adolph F. Gross

**COUNTY TREASURER'S CERTIFICATE**

Office of County Treasurer, Washtenaw County.  
 I hereby certify, that there are no tax liens or titles held by the State on the lands described hereon, and that there are no tax liens or titles held by individuals on said lands, for the five years preceding the 25th day of April, 1951, and that the taxes for said period of five years are all paid, as shown by the records of this office.

This certificate does not apply to taxes, if any, now in process of collection by township, city or village collecting officers.  
 W. F. Verner (County Treasurer)

**APPROVAL BY COUNTY PLANNING COMMISSION**

This plat has been examined and was approved by the Planning Commission of Washtenaw County, Michigan at a meeting held on the 28th day of February 1951.

Earl H. Cress (Chairman)  
 George D. Hurrell (Member)  
 Kenneth Hallenbeck (Member)

**Examined and Approved**

May 3, 1951  
 Thomas J. Purdy (Deputy Auditor General)

REGISTER OF DEEDS } ss. T  
 Washtenaw County }

RECEIVED for Record the 5th day of May A.D. 1951 at 9:22 o'clock A.M. and recorded in Liber 11 of Plate on page 15

Hugh H. Thomas (Deputy)

RECEIVED FOR RECORD  
 MAY 5 9 35 AM '51  
 REGISTER OF DEEDS  
 WASHTENAW COUNTY, MICH.

Correction: See Liber 592 Page 3

