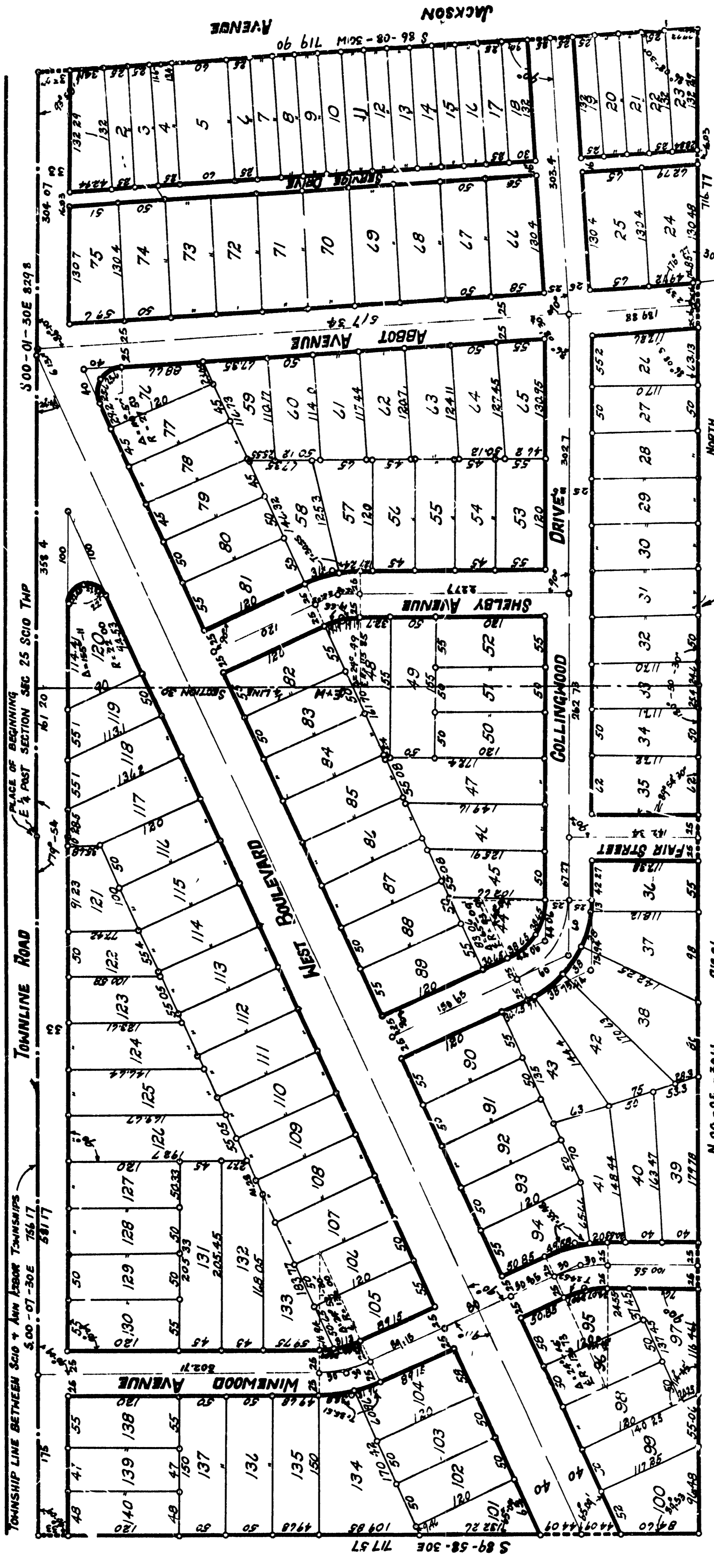


# "BOULEVARD HEIGHTS"

A SUBDIVISION OF PART OF  
THE WEST HALF SECTION THIRTY, TOWN TWO SOUTH, RANGE SIX EAST  
WASHTENAW COUNTY, MICHIGAN.

SCALE - ONE INCH - ONE HUNDRED FEET.

REGISTER OF DEEDS  
Washtenaw County  
RECORDED for record, this 20th day of August, A. D. 1925  
at 9:10 o'clock A. M. and recorded  
LIB. 6 of PLATS and Page 18  
*John J. ...*  
Register of Deeds  
Deputy



**DEDICATION**  
KNOW ALL MEN BY THESE PRESENTS, That we David Friedman and Sadie Friedman his wife, and Clarence J. Sweet and Katherine Sweet his wife as proprietors, have caused the land embraced in the annexed plat to be surveyed, laid out, and platted, to be known as "BOULEVARD HEIGHTS", a subdivision of part of the west half section thirty, town two south, range six east, Washtenaw County, Michigan, and that the streets as shown on said plat are hereby dedicated to the use of the public.  
SIGNED AND SEALED IN PRESENCE OF:  
*David Friedman* (LS)  
*Sadie Friedman* (LS)  
*Clarence J. Sweet* (LS)  
*Katherine Sweet* (LS)  
Solely Public, Washtenaw Co., Michigan

**CERTIFICATE OF APPROVAL**  
BY THE BOARD OF COUNTY AUDITORS  
Approved by the Board of County Auditors of Washtenaw County, Michigan this 14th day of August, 1925.  
*John J. ...* Chairman

**DESCRIPTION**  
The land embraced in the annexed plat of "BOULEVARD HEIGHTS", a subdivision of part of the west half section thirty, town two south, range six east, Washtenaw County, Michigan, is described as follows: commencing at the east quarter post of section 25, 36th Township, Washtenaw County, Michigan, thence south 00 degrees, 7 minutes, and 30 seconds east along the west line of section 30, 756.17 feet, thence south 39 degrees, 58 minutes, and 30 seconds east 717.57 feet, thence north 00 degrees, 5 minutes, and 30 seconds west 918.25 feet to the southwest corner of Jackson Heights, thence north along the west line of Jackson Heights 714.77 feet to the south line of Jackson Avenue, thence south 86 degrees 8 minutes and 30 seconds west along the south line of Jackson Avenue 719.90 feet to the west line of section 30, thence south 00 degrees 1 minute and 30 seconds east 828.8 feet to the place of beginning.

**CERTIFICATE OF APPROVAL**  
BY THE TOWNSHIP BOARD  
This plat was approved by the Township Board of the Township of Ann Arbor, Washtenaw County, Michigan, at a meeting held August 11, 1925.  
*John J. ...* Clerk

**TAX CERTIFICATE**  
OFFICE OF THE COUNTY TREASURER  
WASHTENAW COUNTY, MICHIGAN.

**SURVEYOR'S CERTIFICATE**  
I hereby certify that the plan delineated in a correct line and the iron pipes for half inch or more in diameter which have been placed at points marked thereon shown as being in the boundaries of the land platted and as being the true sections of the same.