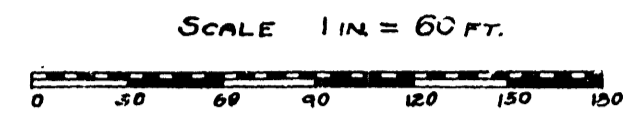


DESCRIPTION

The land included in the annexed Assessor's Plat No. 5, to the City of Ann Arbor, Washtenaw County, State of Michigan, is described as follows: Beginning on the East and West Quarter line of Section 33, Town 2 South, Range 6 East, Washtenaw County Michigan of a point 733.26 feet East of the West line of Section 33; thence North 1°31'40" East 297.13 feet along the East line of H.R.S. Odd; thence North 90°00'00" East, 743.91 feet along the south line of Cady's Sub; thence South 36°06'40" East, 527.95 feet along the west line of Packard St; thence South 90°00'00" West, 486.13 feet, along the north line of Granger Ave.; thence North 1°29'45" East, 132 feet; along the east line of H.R.S. Odd; thence South 90°00'00" West, 492.25 feet along the north line of H.R.S. Odd, to the place of beginning. The land described is a part of the NW 1/4 & SW 1/4 Sec. 33, T2S, R6E, in Washtenaw County, Michigan.

ASSESSORS PLAT NO. 5 IN THE CITY OF ANN ARBOR WASHTENAW COUNTY MICHIGAN



CERTIFICATE OF MUNICIPAL APPROVAL

By The Common Council Of The City Of Ann Arbor, Washtenaw County, Michigan. This plat was examined and approved by the Common Council of the City of Ann Arbor, at a meeting held on the 20th day of March 1922.

Isaac G. Reynolds City Clerk

SURVEYORS CERTIFICATE

I hereby certify that the plat hereon delineated is a correct one and that permanent monuments consisting of an iron pipe with brick and stone have been placed at the intersections of all streets marked thus (circle with dot) and consisting of an iron pipe at all angles in the boundaries of the land platted and marked thus (circle with dot). The iron pipe are all 2" by 30" or larger. All dimensions are given in feet or decimals thereof.

Geo. H. Sandenburgh Registered Civil Engineer

CERTIFICATE OF RECORD

REGISTER OF DEEDS OFFICE WASHTENAW COUNTY, MICHIGAN. Received for record of _____ o'clock, on the _____ day of _____ 1922 and recorded in Liber _____ of Plats page _____.

RECEIVED for Record, the 9th day of May A.D. 1922. P.L. Townsend Registrar of Deeds. Agnes L. Dwyer Deputy

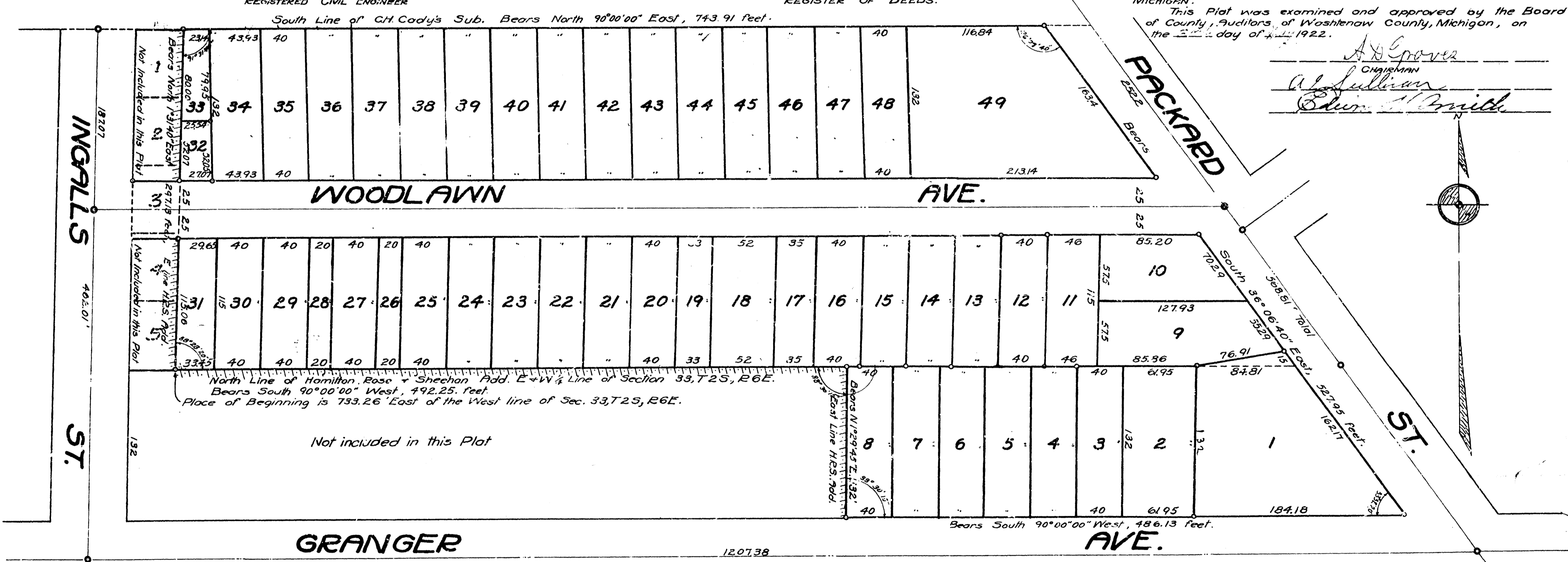
By The Board Of Public Works Of The City Of Ann Arbor, Washtenaw County, Michigan. This plat was examined and approved by the Board of Public Works of the City of Ann Arbor, at a meeting held on the 7th day of March 1922.

Isaac G. Reynolds City Clerk

CERTIFICATE OF COUNTY APPROVAL

By The Board Of County Auditors Of Washtenaw County, Michigan. This Plat was examined and approved by the Board of County Auditors of Washtenaw County, Michigan, on the 3rd day of April 1922.

A.D. Groves Chairman, W. Sullivan, Edw. Smith



DEDICATION

KNOW ALL MEN BY THESE PRESENTS; That I, Herbert W. Crippen, Assessor of the City of Ann Arbor, Washtenaw County, Michigan, by virtue of authority vested by Act 91, of Public Acts of 1839 as amended, having been duly authorized by the Common Council of the City of Ann Arbor, have caused the land described in the annexed plat to be surveyed, laid out and platted, to be known as Assessor's Plat No. 5, City of Ann Arbor Washtenaw County, Michigan, and that the streets and alleys as shown are hereby dedicated to the use of the public.

Herbert W. Crippen Assessor of the City of Ann Arbor. Harold R. Swartz, Vernon W. McAdam

ACKNOWLEDGMENT

STATE OF MICHIGAN, COUNTY OF WASHTENAW. On this 2nd day of May A.D. 1922, before me a Notary Public in and for said city of Ann Arbor, personally came the above named Herbert W. Crippen, Assessor of the City of Ann Arbor known to me to be the person who executed the above dedication and acknowledged the same to be his free act and deed as such Assessor. My Commission expires March 23 1926.

Hemette C. Diabich Notary Public

CERTIFICATE OF STATE APPROVAL

This Assessor's Plat No. 5 of the City of Ann Arbor was examined and approved on the _____ day of _____ 1922.

DEPUTY AUDITOR GENERAL