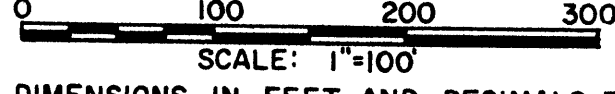
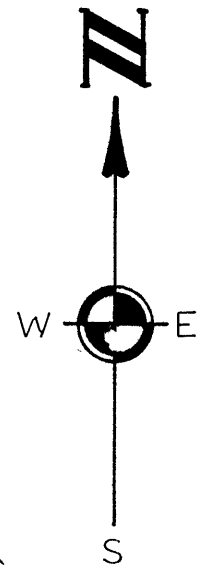


ASSESSOR'S PLAT NO. 49

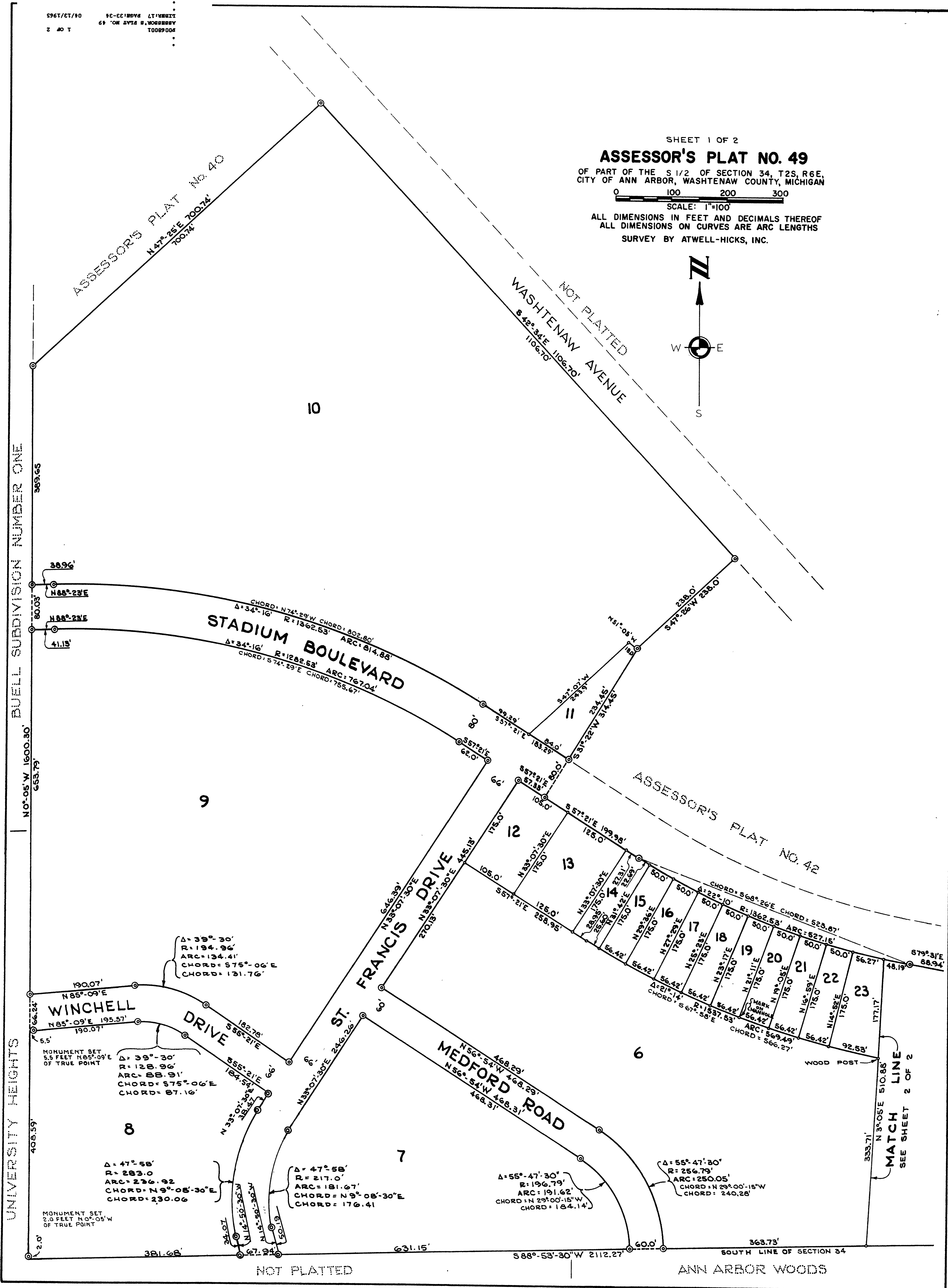
OF PART OF THE S 1/2 OF SECTION 34, T2S, R6E,
CITY OF ANN ARBOR, WASHTENAW COUNTY, MICHIGAN



ALL DIMENSIONS IN FEET AND DECIMALS THEREOF
ALL DIMENSIONS ON CURVES ARE ARC LENGTHS
SURVEY BY ATWELL-HICKS, INC.



UNIVERSITY HEIGHTS
BUELL SUBDIVISION NUMBER ONE



ASSESSOR'S PLAT NO. 40
N 47° 25' E 700.74'
700.74'

WASHTENAW AVENUE
S 42° 34' E 1106.70'
1106.70'

STADIUM BOULEVARD
CHORD: N 74° 29' W 802.80'
Δ = 34° 16' R = 1262.53' ARC = 814.88'
Δ = 34° 16' R = 1262.53' ARC = 767.04'
CHORD: S 74° 29' E 755.67'

ST. FRANCIS DRIVE
N 33° 07' 30" E 270.13'
N 33° 07' 30" E 246.26'

MEDFORD ROAD
N 56° 54' W 468.29'
N 56° 54' W 468.31'
468.31'

WINCHELL DRIVE
N 85° 09' E 190.07'
N 85° 09' E 195.57'
190.07'

MONUMENT SET
5.5 FEET N 85° 09' E
OF TRUE POINT
Δ = 39° - 30'
R = 194.96'
ARC = 134.41'
CHORD = 575° - 06' E
CHORD = 131.76'

MONUMENT SET
2.0 FEET N 0° 05' W
OF TRUE POINT
Δ = 47° - 58'
R = 283.0'
ARC = 236.92'
CHORD = N 9° - 08' - 30" E
CHORD = 230.06'

Δ = 47° - 58'
R = 217.0'
ARC = 181.67'
CHORD = N 9° - 08' - 30" E
CHORD = 176.41'

Δ = 55° - 47' - 30"
R = 196.79'
ARC = 191.62'
CHORD = N 29° 00' - 15" W
CHORD = 184.14'

Δ = 55° - 47' - 30"
R = 256.79'
ARC = 250.05'
CHORD = N 29° 00' - 15" W
CHORD = 240.28'

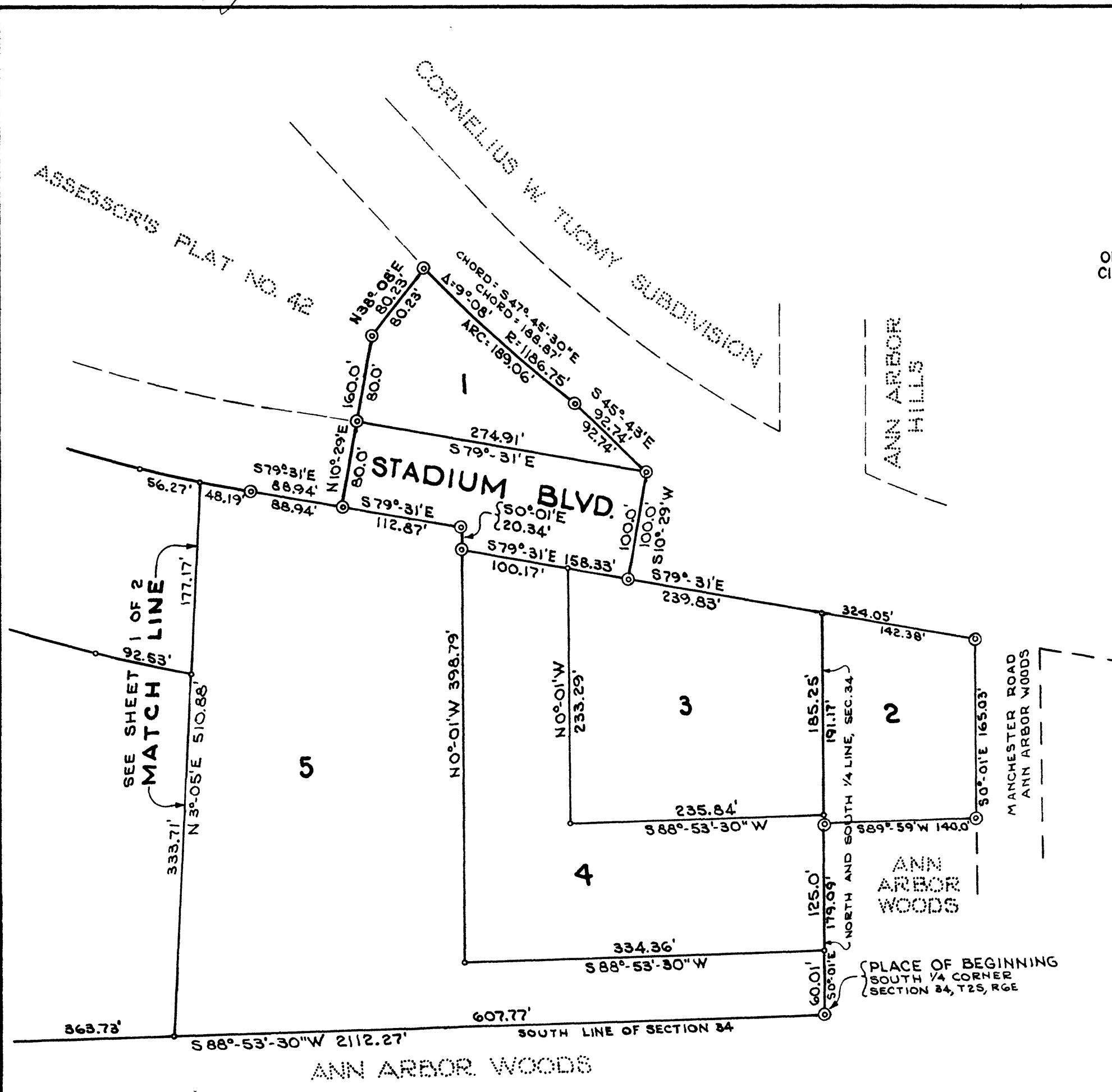
MATCH LINE
SEE SHEET 2 OF 2
N 3° 05' E 510.88'
510.88'

NOT PLATTED

ANN ARBOR WOODS

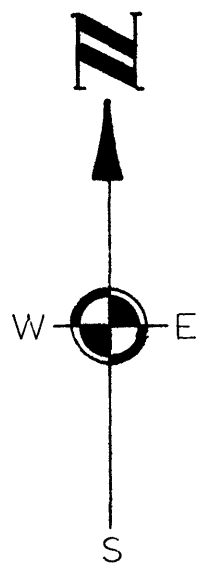
WOOD POST

Copy



ORIGINAL
SHEET 2 OF 2
ASSESSOR'S PLAT NO. 49
OF PART OF THE S 1/2 OF SECTION 34, T2S, R6E,
CITY OF ANN ARBOR, WASHTENAW COUNTY, MICHIGAN

0 100 200 300
SCALE: 1"=100'
ALL DIMENSIONS IN FEET AND DECIMALS THEREOF
ALL DIMENSIONS ON CURVES ARE ARC LENGTHS
SURVEY BY ATWELL-HICKS, INC.



CERTIFICATE AS TO STATE TRUNK LINE OR FEDERAL AID ROADS

We hereby certify that said plat appears to include land located on a state trunk line or federal aid road.

Patricia Newkirk Hardy
Patricia Newkirk Hardy
County Register of Deeds

J. Martin Rempp
J. Martin Rempp
Auditor

Herbert G. Loeffler
Herbert G. Loeffler
Auditor

John H. Flook
John H. Flook
County Drain Commissioner

John P. Cook
John P. Cook

DESCRIPTION OF LAND PLATTED

The land embraced in the annexed plat of ASSESSOR'S PLAT NO. 49 of part of the S 1/2 of Section 34, T2S, R6E, City of Ann Arbor, Washtenaw County, Michigan is described as follows:

Beginning at the South 1/4 corner of Section 34, T2S, R6E, City of Ann Arbor, Washtenaw County, Michigan; thence S 88°-53'-30" W 2112.27 feet along the South line of said Section 34; thence N 0°-05' W 1600.30 feet; thence N 47°-25' E 700.74 feet; thence S 42°-34' E 1106.70 feet; thence S 47°-26' W 238.0 feet; thence S 31°-22' W 314.45 feet; thence S 57°-21' E 199.98 feet; thence along the arc of a circular curve concave to the North, radius 1362.53 feet, subtended by a chord which bears S 68°-26' E 523.87 feet; thence S 79°-31' E 88.94 feet; thence N 10°-29' E 160.0 feet; thence N 38°-08' E 80.23 feet; thence along the arc of a circular curve concave to the NE, radius 1186.75 feet subtended by a chord which bears S 47°-45'-30" E 188.87 feet; thence S 45°-43' E 92.74 feet; thence S 10°-29' W 100.0 feet; thence S 79°-31' E 324.05 feet; thence S 0°-01' E 165.03 feet; thence S 89°-59' W 140.0 feet; thence S 0°-01' E 179.09 feet along the N & S 1/4 line of said section to the Place of Beginning, containing 23 lots numbered 1 through 23 inclusive.

ACKNOWLEDGMENT

STATE OF MICHIGAN)
County of Washtenaw) ss.

On this 27th day of September A.D. 1964 before me, a Notary Public in and for said County, personally came the above named Howard L. Ledbetter, Assessor of the City of Ann Arbor, known to me to be the person who executed the above dedication, and acknowledged the same to be his free act and deed as such. Assessor

Esther L. Michelfelder
Esther L. Michelfelder
Notary Public, Washtenaw County, Michigan

My Commission expires June 20, 1964.

APPROVAL BY COUNTY PLAT BOARD

This plat was approved on the 6th day of November, 1964, by the Washtenaw County Plat Board.

Patricia Newkirk Hardy *John H. Flook*
Patricia Newkirk Hardy John H. Flook
County Register of Deeds County Drain Commissioner

J. Martin Rempp *Herbert G. Loeffler*
J. Martin Rempp Herbert G. Loeffler
Auditor Auditor

John P. Cook
John P. Cook
Auditor

COPY
Register's Office
Washtenaw County, } S.S.

CERTIFICATE OF APPROVAL BY THE CITY PLANNING COMMISSION

This plat was approved by the Planning Commission of the City of Ann Arbor, Michigan at a meeting held on the 17th day of October, 1964.

Joseph W. Edwards
Joseph W. Edwards, Chairman

Richard W. Lavelly
Richard W. Lavelly, Secretary

Robert V. Galbreath
Robert V. Galbreath, Vice-Chairman

DEDICATION

KNOW ALL MEN BY THESE PRESENTS, that I, Howard L. Ledbetter, Assessor of the City of Ann Arbor of Washtenaw County, State of Michigan, by virtue of authority in me vested by Section 51, Act 172, of 1929, having been duly authorized by the City Council have caused the land described in the annexed plat to be surveyed, laid out and platted, to be known as ASSESSOR'S PLAT NO. 49 of part of the S 1/2 of Section 34, T2S, R6E, City of Ann Arbor, Washtenaw County, Michigan, and that the Avenue, Boulevard, Drives and Road as shown on said plat are now being used for such purposes, and that the plat conforms with the requirements of Section 51, Act 172 of Public Acts of 1929, as amended.

Witnesses:

Robert Lupi Witness
Robert Lupi

Wayne G. Johnson Witness
Wayne G. Johnson

Howard L. Ledbetter
Howard L. Ledbetter,
Assessor of the City of
Ann Arbor
100 North Fifth Avenue
Ann Arbor, Michigan

MUNICIPAL APPROVAL

This plat was approved by the common council of the City of Ann Arbor at a meeting held October 19, 1964 and is in compliance with Section 19a, Act 172, Public Acts of 1929, as amended.

Fred J. Looker
Fred J. Looker, Clerk

as Recorded this 13th day of April A.D. 1965 at 10:30 clock A.M. in Liber 17 of Plats
Page 33 and 34
Patricia Newkirk Hardy
By - *Constance R. Formwalt*, Dep.

SURVEYOR'S CERTIFICATE

I hereby certify that the plat hereon delineated is a correct one and that permanent metal monuments consisting of bars not less than one-half inch in diameter and 36 inches in length, or shorter bars of not less than one-half inch in diameter lapped over each other at least 6 inches with an over-all length of not less than 36 inches, encased in a concrete cylinder at least 4 inches in diameter and .36 inches in depth have been placed at points marked thus (⊙) as thereon shown at all angles in the boundaries of the land platted, at all the intersections of streets, intersections of alleys, or of streets and alleys, and at the intersection of streets and alleys with the boundaries of the plat as shown on said plat.

Robert J. Jagow
Robert J. Jagow
Registered Surveyor No. 6998
114 North First Street
Ann Arbor, Michigan

APPROVED 1/15/65
DATE

AS TO ACCEPTED RIGHT OF WAY ONLY
MICHIGAN STATE HIGHWAY COMMISSION

Howard E. Hill
HOWARD E. HILL
Acting State Highway Director