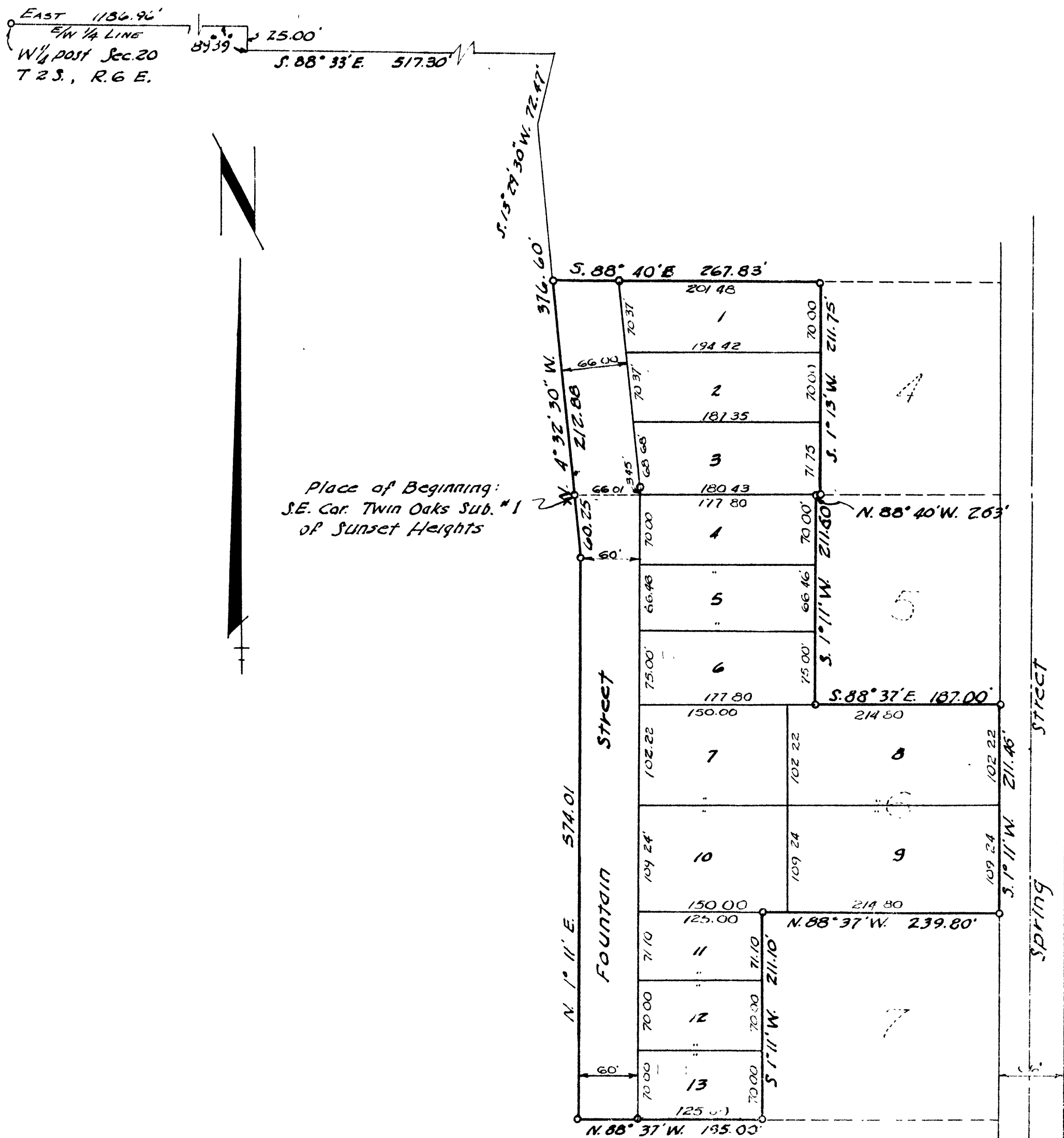


# ASSESSOR'S PLAT NO. 44

PART OF LOTS 4-5-6-7 OF "HISCOCK'S IMPROVED PLAT"  
 LOCATED IN THE SOUTHWEST QUARTER OF SECTION 20, T2S-R6E

CITY OF ANN ARBOR  
 WASHTENAW COUNTY, MICHIGAN



Place of Beginning:  
 S.E. Cor. Twin Oaks Sub. #1  
 of Sunset Heights



Scale 1"=100'  
 All dimensions given in  
 feet and decimals thereof

## DEDICATION

KNOW ALL MEN BY THESE PRESENTS, That I, Curt H. Will, Assessor of the City of Ann Arbor of Washtenaw County, State of Michigan, by virtue of authority in me vested by Section 51, Act 172, of 1929, having been duly authorized by the City Council have caused the land described in the annexed Plat to be surveyed, laid out and platted, to be known as ASSESSOR'S PLAT NO. 44, part of Lots 4, 5, 6, and 7, of "Hiscock's Improved Plat", located in the Southwest Quarter of Section 20, T2S-R6E, City of Ann Arbor, Washtenaw County, Michigan, and that the streets as shown on said Plat are now being used for such purposes.

*John M. Elm* (Witness)  
*Blanche E. Waters* (Witness)  
*Kurt H. Will* (Assessor of the City of Ann Arbor)

## ACKNOWLEDGMENT

STATE OF MICHIGAN )  
 County of Washtenaw ) ss

On this 11 day of December, A.D. 1957, before me, a Notary Public in and for said county personally came the above named Curt H. Will, Assessor of the City of Ann Arbor, known to me to be the person who executed the above dedication, and acknowledged the same to be his free act and deed as such

*Fred J. Looker*  
 Notary Public, Washtenaw County  
 My Commission expires May 12, 1964.

## DESCRIPTION OF LAND PLATTED

The land embraced in the annexed Plat of Assessor's Plat NO. 44, part of Lots 4, 5, 6, and 7 of "Hiscock's Improved Plat" located in the Southwest Quarter of Section 20, T2S-R6E, City of Ann Arbor, Washtenaw County, Michigan, is described as follows: Commencing at the West Quarter post of Section 20; thence East 1186.96 feet in the East and West Quarter line of Section 20; thence deflecting 90°21' to the right 25.0 feet; thence South 88°33' East 517.30 feet; thence South 13°29'30" West 72.47 feet; thence South 4°32'30" East 376.6 feet to the Southeast corner of Twin Oaks Subdivision No. 1 of Sunset Heights for a place of beginning; thence North 4°32'30" West 212.88 feet; thence South 88°40' East 267.83 feet; thence South 1°13' West 211.75 feet; thence North 88°40' West 2.63 feet; thence South 1°11' West 211.6 feet; thence South 88°37' East 187.0 feet; thence South 1°11' West 211.46 feet; thence North 88°37' West 239.8 feet; thence South 1°11' West 211.1 feet; thence North 88°37' West 185 feet; thence North 1°11' East 574.01 feet; thence North 4°32'30" West 60.25 feet to the place of beginning. Containing 13 Lots, numbered 1 through 13, inclusive.

## SURVEYOR'S CERTIFICATE

I hereby certify that the Plat hereon delineated is a correct one and that permanent metal monuments consisting of bars not less than one-half inch in diameter and 36 inches in length, or shorter bars of not less than one-half inch in diameter spaced over each other at least 6 inches with an over-all length of not less than 36 inches, encased in a concrete cylinder at least 4 inches in diameter and 36 inches in depth have been placed at points marked thus (o) as thereon shown at all angles in the boundaries of the land platted, at all the intersections of lines of streets, and at the intersections of lines of streets with the boundaries of the Plat as shown on said Plat.

*Alton D. Simms*  
 Registered Land Surveyor

## MUNICIPAL APPROVAL

This Plat was approved by the COUNCIL of the City of Ann Arbor at a meeting held on December 9, 1957

*Fred J. Looker*  
 Fred J. Looker (Clerk)

## APPROVAL BY COUNTY PLAT BOARD

This Plat was approved on the 13<sup>th</sup> day of December, 1957, by the Washtenaw County Plat Board.

*Patricia Newkirk Hardy*  
 Patricia Newkirk Hardy (County Register of Deeds)

*J. Martin Remp*  
 J. Martin Remp (Auditor)

*Adolph F. Gross*  
 Adolph F. Gross (Auditor)

*Herbert G. Loeffler*  
 Herbert G. Loeffler (Auditor)

## CERTIFICATE OF APPROVAL BY THE CITY PLANNING COMMISSION

This Plat was approved by the Planning Commission of the City of Ann Arbor, Michigan, at a meeting held on the 13<sup>th</sup> day of November, 1957.

*Paul G. Kauffman* (Chairman)  
*John E. Swisher, Jr.*  
*Leo P. Meyers* (Secretary)

COPY  
 Registered Office  
 Washtenaw County  
 Plat of Assessor's Plat No. 44  
 Recorded this 18<sup>th</sup> day of Dec, 1957  
 at 9:58 a.m.  
 on sheet 14 of 18 pages  
*Patricia Newkirk Hardy*  
 Register of Deeds

I hereby certify this copy is a true copy of said plat or plat forwarded the Register of Deeds for recording.  
 Date December 17, 1957  
 FILED IN AUDITOR GENERAL'S OFFICE  
 Date December 30, 1957  
 Date December 17, 1957

*Patricia Newkirk Hardy*  
 Register of Deeds