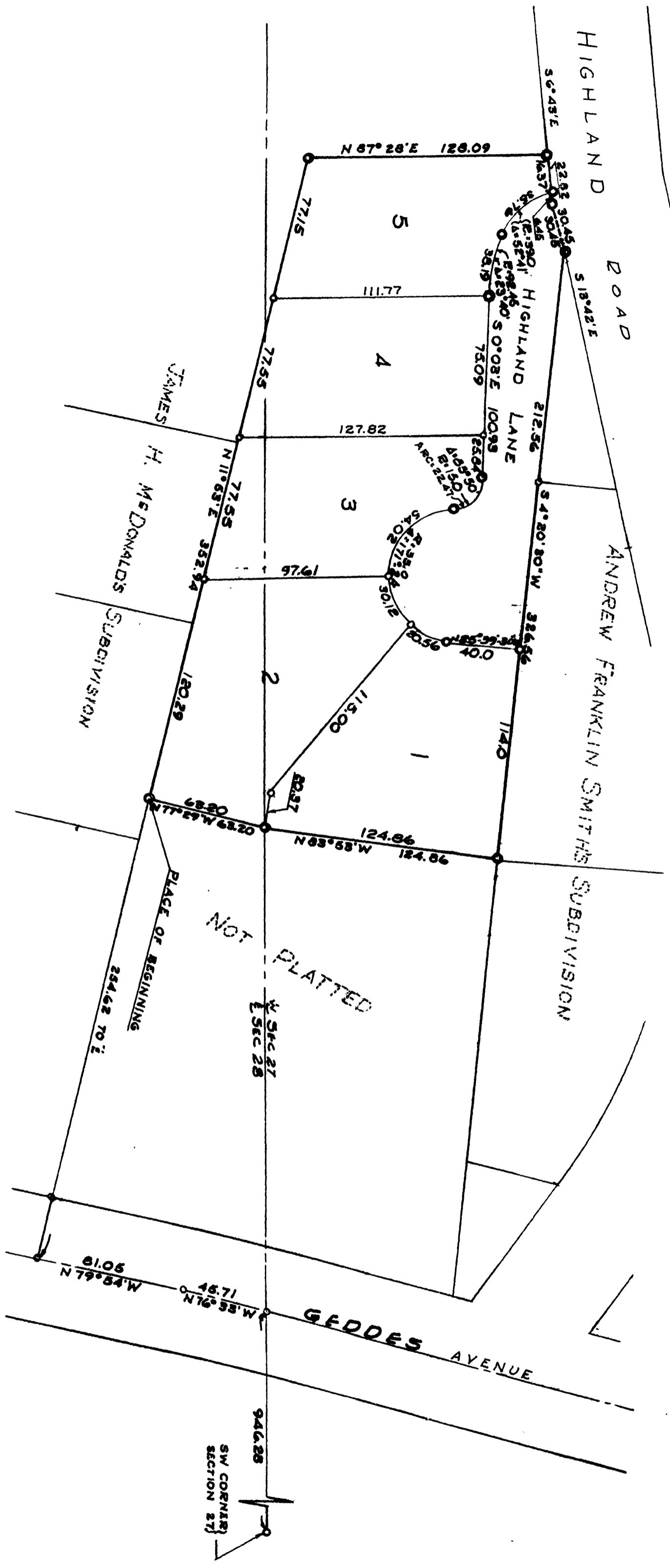
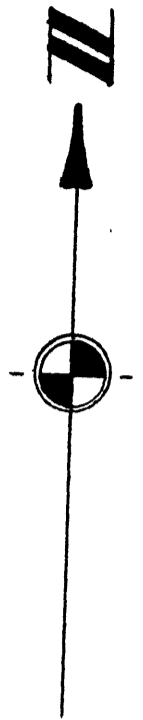


ASSESSOR'S PLAT NO. 43
 PART OF THE SW 1/4 OF SECTION 27, AND PART OF THE SE 1/4 OF SECTION 28 T.2S., R.6E., CITY OF ANN ARBOR, WASHENAW COUNTY, MICHIGAN



ALL DIMENSIONS IN FEET AND DECIMALS THEREOF
 ALL DIMENSIONS ON CURVES ARE ARC LENGTHS
 SURVEY BY ATWELL-HICKS, INC.



DEDICATION

KNOW ALL MEN BY THESE PRESENTS, that I, Curt H. Will, Assessor of the City of Ann Arbor of Washenaw County State of Michigan, by virtue of authority in me vested by Section 51, Act 172, of 1929, having been duly authorized by the City Council have caused the land described in the annexed plat to be surveyed, laid out and platted, to be known as ASSESSOR'S PLAT No. 43 part of the S. W. 1/4 of Section 27, and part of the S. E. 1/4 of Section 28 T. 2S., R. 6E., City of Ann Arbor, Washenaw County, Michigan and that the avenue boulevard and driveway as shown on said plat are now being used for such purposes.

Curt H. Will
 Curt H. Will
 Assessor of the city of Ann Arbor.
John E. Swisher, Jr.
 John E. Swisher, Jr. (Witness)
John E. Swisher, Jr.
 John E. Swisher, Jr. (Witness)
John E. Swisher, Jr.
 John E. Swisher, Jr. (Witness)

STATE OF MICHIGAN)
) ss
 County of Washenaw)

On this 6 day of February, A. D. 1957, before me, a Notary Public in and for said county personally came the above named Curt H. Will, Assessor of the City of Ann Arbor, known to me to be the person who executed the above dedication, and acknowledged the same to be his free act and deed as such.

Fred J. Hooker
 Fred J. Hooker
 Notary Public
 My Commission expires May 15, 1964

DESCRIPTION OF LAND PLATTED

The land embraced in the annexed plat of ASSESSOR'S PLAT NO. 43 part of the S. W. 1/4 of Section 27, and part of the S. E. 1/4 of Section 28 T. 2 S., R. 6 E., City of Ann Arbor, Washenaw County, Michigan:

Commencing at the SW corner of Section 27, T. 2 S., R. 6 E., City of Ann Arbor, Washenaw County, Michigan: thence northerly along the west line of said section 946.28 feet to the center line of Geddes Avenue; thence along said center line N 76°-33' W 45.71 feet; thence continuing along said center line N 79°-54' W 81.05 feet; thence N 11°-53' E 254.62 feet to the PLACE OF BEGINNING; thence continuing N 11°-53' E 352.94 feet; thence N 87°-28' E 128.09 feet; thence S 6°-43' E 22.82 feet; thence S 13°-42' E 30.45 feet; thence S 4°-20'-30" W 326.56 feet; thence N 83°-53' W 124.86 feet; thence N 77°-29' W 63.20 feet to the place of beginning, containing 5 lots numbered 1 through 5 inclusive.

SURVEYOR'S CERTIFICATE

I hereby certify that the plat hereon delineated is a correct one and that permanent metal monuments consisting of bars not less than one-half inch in diameter and 36 inches in length, or shorter bars of not less than one-half inch in diameter lapped over each other at least 6 inches with an over-all length of not less than 36 inches, encased in a concrete cylinder at least 4 inches in diameter and 36 inches in depth have been placed at points marked thus (O) as thereon shown at all angles in the boundaries of the land platted, at all the intersections of lines of streets, and at the intersections of lines of streets with the boundaries of the plat as shown on said plat.

Robert J. Jagow
 Robert J. Jagow
 Registered Land Surveyor # 6998

CERTIFICATE OF APPROVAL BY THE CITY PLANNING COMMISSION

This plat was approved by the Planning Commission of the City of Ann Arbor, Michigan at a meeting held on the 25 day of JAN, 1957.

John E. Swisher, Jr.
 John E. Swisher, Jr. (Chairman)
Leo P. Meyers
 Leo P. Meyers (Secretary)

MUNICIPAL APPROVAL

This plat was approved by the COMMON COUNCIL of the City of Ann Arbor at a meeting held February 6, 1957.

Fred J. Hooker
 Fred J. Hooker (Clerk)

APPROVAL BY COUNTY PLAT BOARD

This plat was approved on the 5 day of February, 1957 by the Washenaw County Plat Board.

Patricia Newkirk Hardy
 Patricia Newkirk Hardy (County Register of Deeds)
J. Martin Rempff
 J. Martin Rempff (Auditor)
Adolph F. Gross
 Adolph F. Gross (Auditor)
Herbert G. Loeffler
 Herbert G. Loeffler (Auditor)

COPY

Register's Office
 Washenaw County, Michigan
 Plat of Assessor's Plat No. 43
 Rec. rec'd this 19 day of Feb
1957 at 11 o'clock
AM of 1957
John E. Swisher, Jr.
 John E. Swisher, Jr. (Recorder)
Mark J. Goff
 Mark J. Goff (Notary Public)

Date February 15, 1957

FILED IN 27 of SECTION 27, T. 2 S., R. 6 E., City of Ann Arbor, Michigan.

Patricia Newkirk Hardy
 Patricia Newkirk Hardy (County Register of Deeds)
J. Martin Rempff
 J. Martin Rempff (Auditor)
Adolph F. Gross
 Adolph F. Gross (Auditor)
Herbert G. Loeffler
 Herbert G. Loeffler (Auditor)