

ASSESSOR'S PLAT NO. 42

PART OF THE S.W. 1/4 OF SEC. 34, T 2 S - R 6 E
CITY OF ANN ARBOR, WASHTENAW COUNTY, MICH.

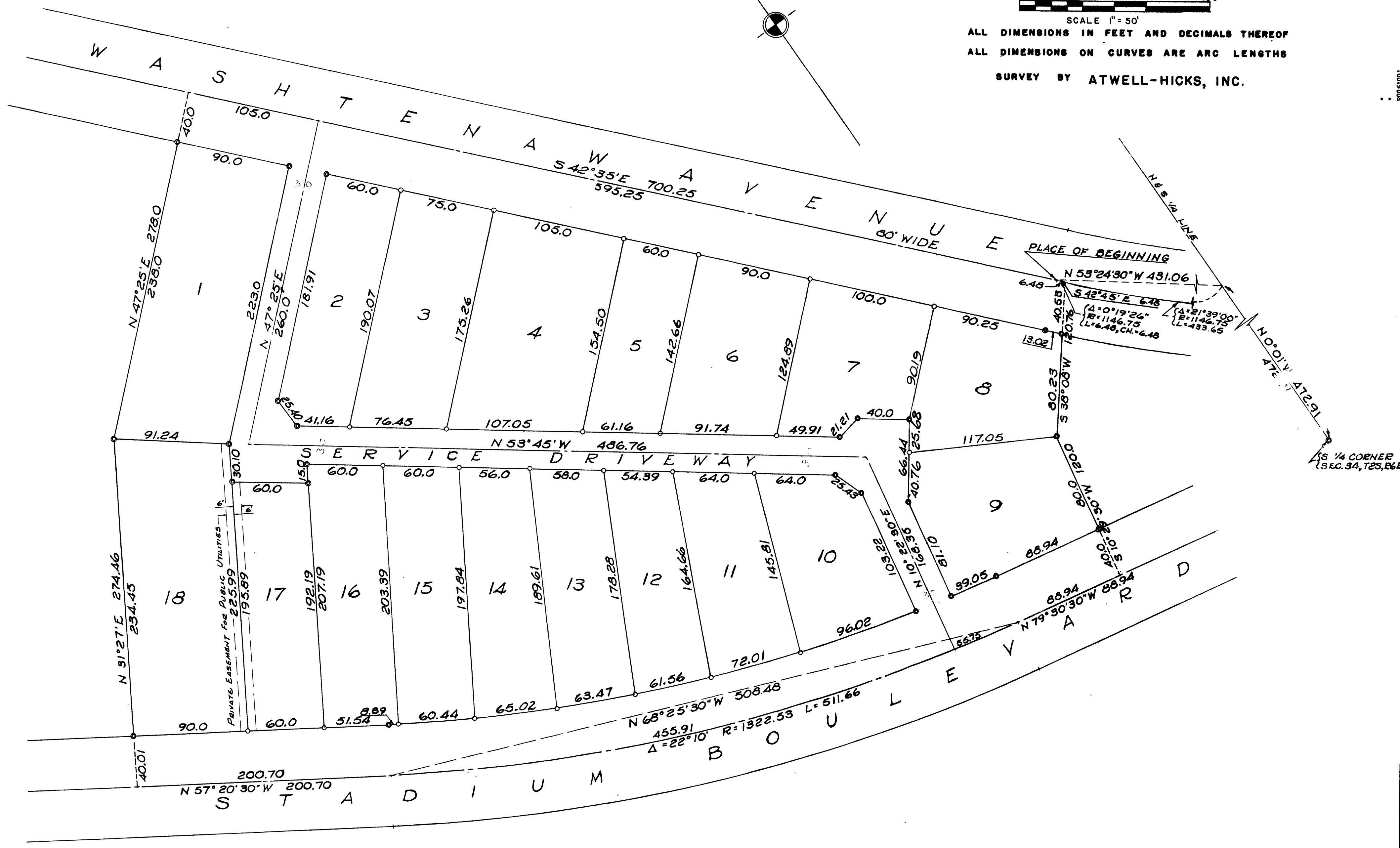
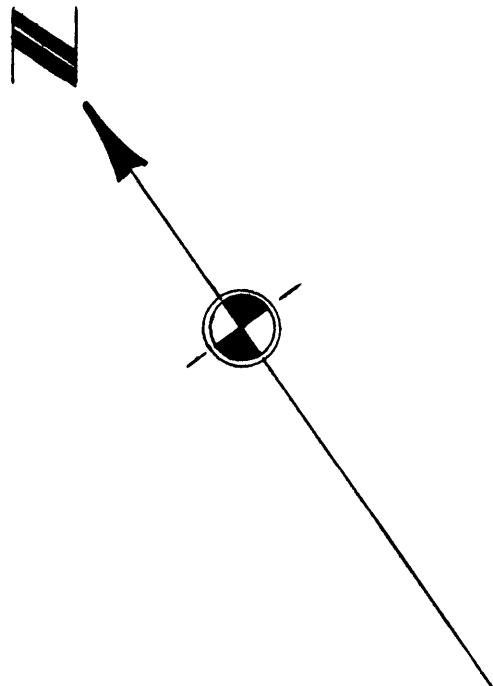


SCALE 1" = 50'

ALL DIMENSIONS IN FEET AND DECIMALS THEREOF
ALL DIMENSIONS ON CURVES ARE ARC LENGTHS

SURVEY BY ATWELL-HICKS, INC.

1 OF 2
03/05/1997
ASSESSOR'S PLAT NO. 42
SHEET 1 OF 2



1/4 CORNER
S.E.C. 34, T2S, R6E

ASSESSOR'S PLAT NO. 42

PART OF THE S.W. 1/4 OF SEC. 34, T 2 S - R 6 E
CITY OF ANN ARBOR, WASHTENAW COUNTY, MICH.

DEDICATION

KNOW ALL MEN BY THESE PRESENTS, That I, Curt H. Will, Assessor of the City of Ann Arbor of Washtenaw County State of Michigan, by virtue of authority in me vested by Section 51, Act 172, of 1929, having been duly authorized by the City Council have caused the land described in the annexed plat to be surveyed, laid out and platted, to be known as ASSESSOR'S PLAT No. 42 part of the SW 1/4 of Sec. 34, T 2 S - R 6 E City of Ann Arbor, Washtenaw County, Mich. and that the avenue, boulevard and driveway as shown on said plat are now being used for such purposes.

Edwin A. Davis (Witness)
Curt H. Will
Assessor of the city of Ann Arbor.
Esther Michelfelder (Witness)

MUNICIPAL APPROVAL

This plat was approved by the COUNCIL of the City of Ann Arbor at a meeting held February 6, 1957.

Fred J. Looker (Clerk)

ACKNOWLEDGEMENT

STATE OF MICHIGAN)
) ss
County of Washtenaw)

On this 6 day of February A.D. 1957, before me, a Notary Public in and for said county personally came the above named Curt H. Will, Assessor of the City of Ann Arbor, known to me to be the person who executed the above dedication, and acknowledged the same to be his free act and deed as such.

Fred J. Looker
Notary Public, Washtenaw County
My Commission expires May 13, 1960

APPROVAL BY COUNTY PLAT BOARD

This plat was approved on the 6 day of February 1957 by the Washtenaw County Plat Board.

Patricia Newkirk Hardy (County Register of Deeds)
J. Martin Rempp (Auditor)
Adolph F. Gross (Auditor)
Herbert G. Loeffler (Auditor)

DESCRIPTION OF LAND PLATTED

The land embraced in the annexed plat of ASSESSOR'S PLAT No. 42 part of the SW 1/4 of Sec. 34, T 2 S - R 6 E, City of Ann Arbor, Washtenaw County, Mich. is described as follows: Commencing at the S 1/4 corner of Section 34, T 2 S, R 6 E, City of Ann Arbor, Washtenaw County, Michigan; thence along the N & S 1/4 line of said section N 0° - 01' W 472.91 feet; thence 433.65 feet in the arc of a circular curve concave to the Northeast, radius 1146.75 feet, chord bearing N 53° - 24' - 30" W 431.06 feet for a PLACE OF BEGINNING; thence 6.48 feet in the arc of a circular curve concave to the Northeast, radius 1146.75 feet, chord bearing S 42° - 45' E 6.48 feet; thence S 38° - 08' W 120.76 feet; thence S 10° - 29' - 30" W 120.0 feet; thence N 79° - 30' - 30" W 88.94 feet; thence 511.66 feet in the arc of a circular curve concave to the North, radius 1322.53 feet, chord bearing N 68° - 25' - 30" W 508.48 feet; thence N 57° - 20' - 30" W 200.70 feet; thence N 31° - 27' E 274.46 feet; thence N 47° - 25' E 278.0 feet; thence S 42° - 35' E 700.25 feet to the place of beginning being a part of the SW 1/4 of said Section 34 and containing 18 lots numbered 1 - 18 inclusive.

SURVEYOR'S CERTIFICATE

I hereby certify that the plat hereon delineated is a correct one and that permanent metal monuments consisting of bars not less than one-half inch in diameter and 36 inches in length, or shorter bars of not less than one-half inch in diameter lapped over each other at least 6 inches with an over-all length of not less than 36 inches, encased in a concrete cylinder at least 4 inches in diameter and 36 inches in depth have been placed at points marked thus (O) as thereon shown at all angles in the boundaries of the land platted, at all the intersections of lines of streets, and at the intersections of lines of streets with the boundaries of the plat as shown on said plat.

Robert J. Jagow
Registered Land Surveyor # 6998

CERTIFICATE AS TO STATE TRUNK LINE OR FEDERAL AID ROADS

We hereby certify that said plat appears to include land located on a state trunk line or federal aid road.

Patricia Newkirk Hardy (County Register of Deeds)
J. Martin Rempp (Auditor)
Adolph F. Gross (Auditor)
Herbert G. Loeffler (Auditor)

CERTIFICATE OF APPROVAL BY THE CITY PLANNING COMMISSION

This plat was approved by the Planning Commission of the City of Ann Arbor, Michigan, at a meeting held on the 25 day of JAN. 1957.

John E. Swisher, Jr. (Chairman)
Leo P. Meyers (Secretary)

COPY
Register's Office
Washtenaw County
Plat of Assessor's Plat No. 42
was recorded this 5th day of March 1957 at 1:30 clock P.M. in Liber 14-31-112
on page 1 and 2
Patricia Newkirk Hardy
Register of Deeds

hereby certify this copy is a true copy of the, or plat forwarded the Register of deeds for recording
Date March 4, 1957
FILED IN AUDITOR GENERAL'S DEPT.
Date March 5, 1957
EXAMINED AND APPROVED
Date March 4, 1957
Auditor General
Plat Engineer

FO061002 2 OF 2
ASSESSOR'S PLAT NO. 42
LIBER:14 PAGE:1-2 03/05/1957

APPROVED
Charles M. Diegler
CHARLES M. DIEGLER
STATE HIGHWAY COMMISSIONER