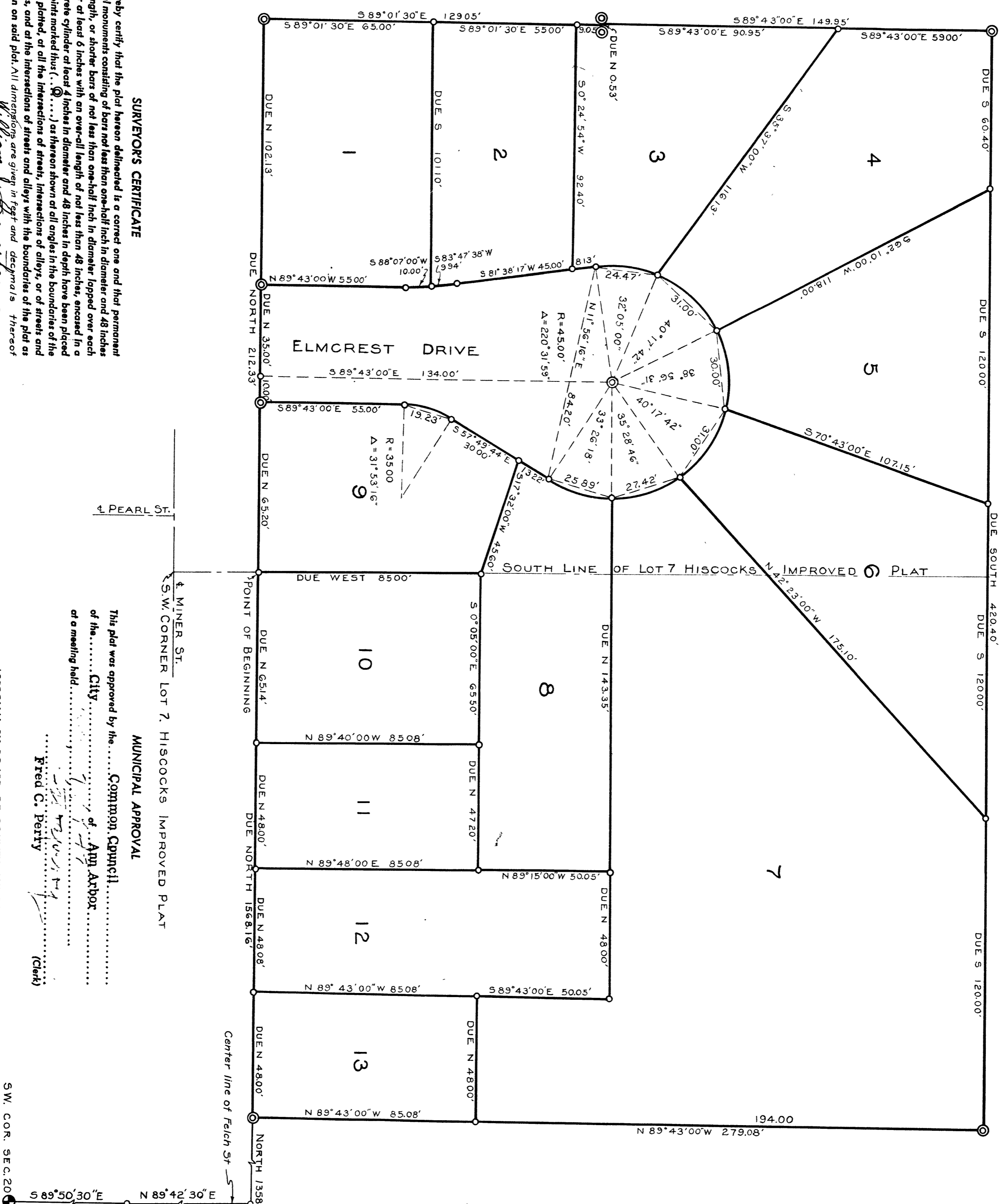


ORIGINAL
ASSESSOR'S PLAT NO. 36
PART OF SOUTHWEST QUARTER SECTION 20, TOWN 2 SOUTH, RANGE 6 EAST
CITY OF ANN ARBOR
WASHINGTON COUNTY, MICHIGAN
SCALE ONE INCH = THIRTY FEET



SURVEYOR'S CERTIFICATE

I hereby certify that the plat hereon delineated is a correct one and that permanent metal monuments consisting of bars not less than one-half inch in diameter and 48 inches in length, or shorter bars of not less than one-half inch in diameter lapped over each other at least 6 inches with an over-all length of not less than 48 inches, encased in a concrete cylinder of at least 4 inches in diameter and 48 inches in depth have been placed at points marked thus: (.....) as hereon shown at all angles in the boundaries of the land platted, at all the intersections of streets, intersections of alleys, or of streets and alleys, and at the intersections of streets and alleys with the boundaries of the plat as shown on said plat. All dimensions are given in feet and decimals thereof.

William A. Partridge
Registered Land Surveyor for Professional Engineers
William A. Partridge

MUNICIPAL APPROVAL

This plat was approved by the Board of Public Works of the City of Ann Arbor, Michigan, at a meeting held on the 15th day of July, 1947.

This plat was approved by the Common Council of the City of Ann Arbor, Michigan, at a meeting held on the 15th day of July, 1947.

Fred C. Perry
(Clerk)

APPROVAL BY BOARD OF COUNTY AUDITORS

Approved by the Board of County Auditors of Washington County, Michigan, this 15th day of July, 1947.

Walter L. Lohr
Chairman
Fred C. Perry
Clerk

MUNICIPAL APPROVAL

This plat was approved by the Planning Commission of the City of Ann Arbor, Michigan, at a meeting held on the 15th day of July, 1947.

Fred C. Perry
(Clerk)

APPROVAL BY BOARD OF COUNTY AUDITORS

Approved by the Board of County Auditors of Washington County, Michigan, this 15th day of July, 1947.

Walter L. Lohr
Chairman
Fred C. Perry
Clerk

FILED IN AUDITOR GENERAL'S DEPT.

Mayme Jewell Purdy
Deputy Auditor General

DEDICATION

KNOW ALL MEN BY THESE PRESENTS, that I, Walter Lohr, Assessor of the City of Ann Arbor of Washington County, State of Michigan, by virtue of authority in me vested by Section 51, Act 172, of 1929, having been duly authorized by the Common Council of the City of Ann Arbor, have caused the land described in the annexed plat to be surveyed, laid out and platted, to be known as "Assessor's Plat No. 36", Part of southwest quarter of Section 20, Town 2 South, Range 6 East, City of Ann Arbor, Washington County, Michigan.

Walter Lohr
Assessor of the City of Ann Arbor.

ACKNOWLEDGMENT

On this 15th day of July, 1947, before me, a Notary Public in and for said county, personally came the above named Walter Lohr, Assessor of the City of Ann Arbor, known to me to be the person who executed the above dedication, and acknowledged the same to be his free act and deed as such.

DESCRIPTION OF LAND PLATTED

The land embraced in the annexed plat of "Assessor's Plat No. 36", Parts of Lots No. 7 and 8 of Hiscock's Improved Plat in the City of Ann Arbor, Washington County, Michigan, described as follows: Commencing at the southwest corner of section 20 of T2S, R6E, Washington County, Michigan; Thence south 89°50'30" east 66.704 feet; Thence north 89°42'30" east 700.26 feet to the east line of Miner Street of the center line of Felch Street; Thence north on the east line of Miner Street 156.616 feet to the point of beginning at an iron pipe at the intersection of the south line of Lot 7 of said Hiscock's Improved Plat with the east line of Miner Street 33.00 feet east of the southwest corner of said Lot 7; thence due north in the east line of Miner Street 212.33 feet to a monument; thence N 89° 01' 30" E 129.05 feet to a monument; thence due north 0.53 feet to a monument; thence S 89° 43' 00" E 149.95 feet to a monument; thence due south 420.4 feet to a monument; thence N 89° 43' 00" W 279.08 feet to a monument; thence due north 209.22 feet to the point of beginning, being a part of the southwest quarter of section 20, Township 2 south, Range 6 east.

CERTIFICATE OF APPROVAL BY THE PLANNING COMMISSION

This plat was approved by the Planning Commission of the City of Ann Arbor at a meeting held on the 15th day of July, 1947.

Walter Lohr
Milton G. Kendrick, Chairman
Samuel D. Porter, Secretary

I HEREBY CERTIFY THAT THIS COPY IS A TRUE COPY OF THE MAP OR PLAT FOR RECORDING.

Walter Lohr
Deputy Auditor General

Examined and Approved

Mayme Jewell Purdy
Deputy Auditor General