

"ASSESSOR'S PLAT NO. 29"

BEING A REPLAT OF BLOCKS 3 AND 4 NORTH, RANGES 4, 5 AND 6 EAST ON THE PLAT OF THE VILLAGE OF ANN ARBOR.

CITY OF ANN ARBOR
WASHTENAW CO. MICHIGAN

Scale: One Inch = One Hundred Feet

Note: All dimensions are given in feet and decimals thereof.

Examined and Approved

FILED IN AUDITOR GENERAL'S DEPT.

May 2, 1935
J. Hartman

May 8, 1935
J. Hartman

CERTIFICATE OF MUNICIPAL APPROVAL

This plat was approved by the Common Council of the City of Ann Arbor, Washtenaw County, Michigan at a meeting held this 14 day of April 1935

Judith
City Clerk

This plat was approved by the Board of Public Works of the City of Ann Arbor, Washtenaw County, Michigan at a meeting held this 17 day of April 1935

Judith
City Clerk

CERTIFICATE OF APPROVAL BY BOARD OF COUNTY AUDITORS.

Approved by the Board of County Auditors of Washtenaw County, Michigan this 30 day of April 1935

L. O. Cushing
Chairman

Oliver L. Brown

DEDICATION

KNOW ALL MEN BY THESE PRESENTS: That I, Herbert W. Crippen, Assessor of the City of Ann Arbor, Washtenaw County, Michigan, by virtue of authority in me vested by Section 51, Act 172, P.A. of 1929, having been duly authorized by the Common Council of the City of Ann Arbor, Washtenaw County, Michigan, having caused the land described in the annexed plat to be surveyed, laid out and platted, to be known as "Assessor's Plat No. 29, being a replat of Blocks 3 and 4 North, Ranges 4, 5 and 6 East, on the plat of the Village of Ann Arbor," being a part N.E. Quarter of Sec. 29, Town 2 South, Range 6 East, Michigan in the City of Ann Arbor, Washtenaw County, Michigan, and that the streets and alleys as shown on said plat are hereby dedicated to the use of the public. Witness my hand and seal this 19 day of April 1935.

Herbert W. Crippen
Assessor of the City of Ann Arbor
Washtenaw Co. Michigan

ACKNOWLEDGMENT

On this 19 day of April A.D. 1935, before me a Notary Public in and for said county personally came the above named Herbert W. Crippen, Assessor of the City of Ann Arbor, Washtenaw County, Michigan, known to me to be the person who executed the above dedication and acknowledged the same to be his free act and deed as such Assessor.

Clara M. Mast
Notary Public in and for Washtenaw County
Michigan

My commission expires June 19 - 1936

DESCRIPTION

Commencing at the North Quarter post of Section 29, Town 2S, Range 6E, Michigan, thence N. 87° 53' 30" E, 328.73 feet, thence N. 85° 43' 00" E, 339.39 feet to the Place of Beginning on the center line of Main St, thence S. 19° 14' 00" E, 3 feet along the center line of Main St, thence S. 86° 01' 00" E, 337.14 feet, thence S. 85° 51' 00" E, 335.30 feet, thence S. 85° 49' 00" E, 592.35 feet to the center line of Division St, thence S. 04° 07' 00" W, 564.56 feet, thence S. 04° 07' 30" W, 253.35 feet, thence N. 84° 53' 15" W, 297.77 feet, thence N. 05° 03' 45" E, 354.42 feet, thence N. 84° 53' 15" W, 144.18 feet, thence N. 50° 10' 00" W, 709 feet to the E. line of Detroit St, thence S. 39° 50' 00" W, 92.25 feet along the E. line of Detroit St, thence S. 84° 53' 15" E, 552.74 feet to the center line of Division St, thence S. 04° 07' 30" W, 341.35 feet to the center line of Catherine St, thence N. 85° 55' 30" W, 594.90 feet, thence N. 85° 55' 00" W, 234.95 feet, thence N. 85° 57' 30" W, 95.29 feet, thence N. 85° 55' 30" W, 338.57 feet to the center line of Main St, thence N. 04° 01' 00" E, 596.32 feet, thence N. 04° 04' 00" E, 560.90 feet to the Place of Beginning.

SURVEYOR'S CERTIFICATE

I hereby certify that the plat hereon delineated is a correct one and that permanent metal monuments of not less than one inch in diameter and fifteen inches in length set in a concrete base at least four inches in diameter and forty eight inches in length have been placed at all points marked thus © as hereon shown at all angles in the boundaries of land platted, at all the intersections of street, intersections of streets and alleys or of alleys and at the intersections of streets and alleys with the boundaries of the plat as shown on said plat.

George H. Sandenburgh
Registered Civil Engineer

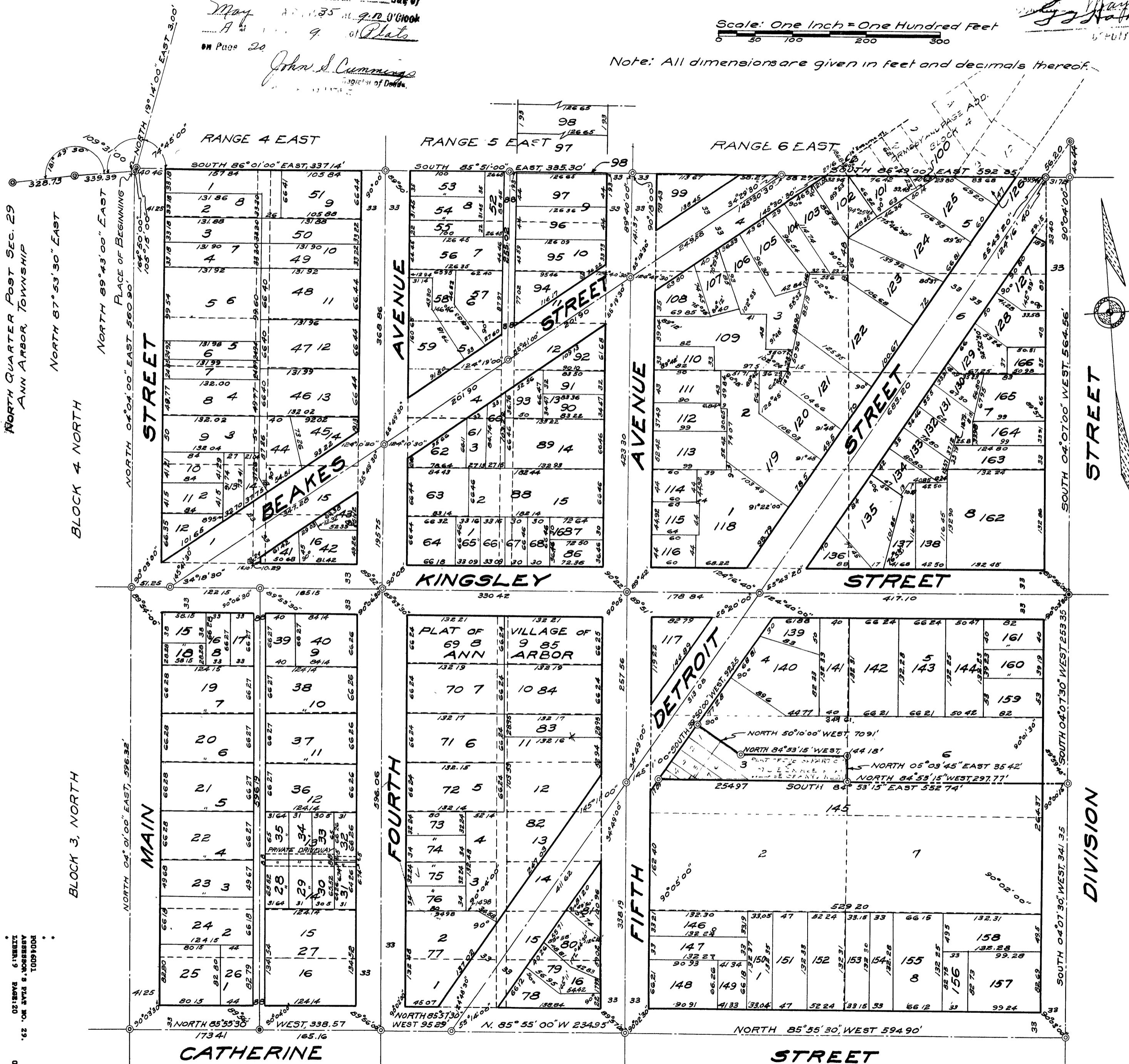
STATE OF MICHIGAN
COUNTY OF WASHTENAW } S.S.

Geo. H. Sandenburgh of Ann Arbor, Washtenaw Co., Michigan deposes and says that he is the City Engineer of said City of Ann Arbor and that he has prepared an Assessor's Plat entitled, "Assessor's Plat No. 29, being a replat of Blocks 3 and 4 N., Ranges 4, 5 and 6 E. on the plat of the Village of Ann Arbor," and that lots No 101 and 100 as shown on said plat, which have no apparent outlet are owned by the owners of lots No. 1 and 2, Block 4, Ormsby 2nd Page Add. having an outlet to a public highway.

George H. Sandenburgh
City Engineer

Subscribed and sworn to before me this 19 day of April 1935

Notary Public in and for Washtenaw Co. Michigan



REGISTERED CIVIL ENGINEER
 GEORGE H. SANDENBURGH
 ANN ARBOR, MICHIGAN
 No. 1001
 1935

My Commission expires _____