

2nd Copy

Mar 17-1932  
Geo L. Howell

Assessor's Plat No 23  
18"  
Mar 32 945  
9  
J. M. Cummings

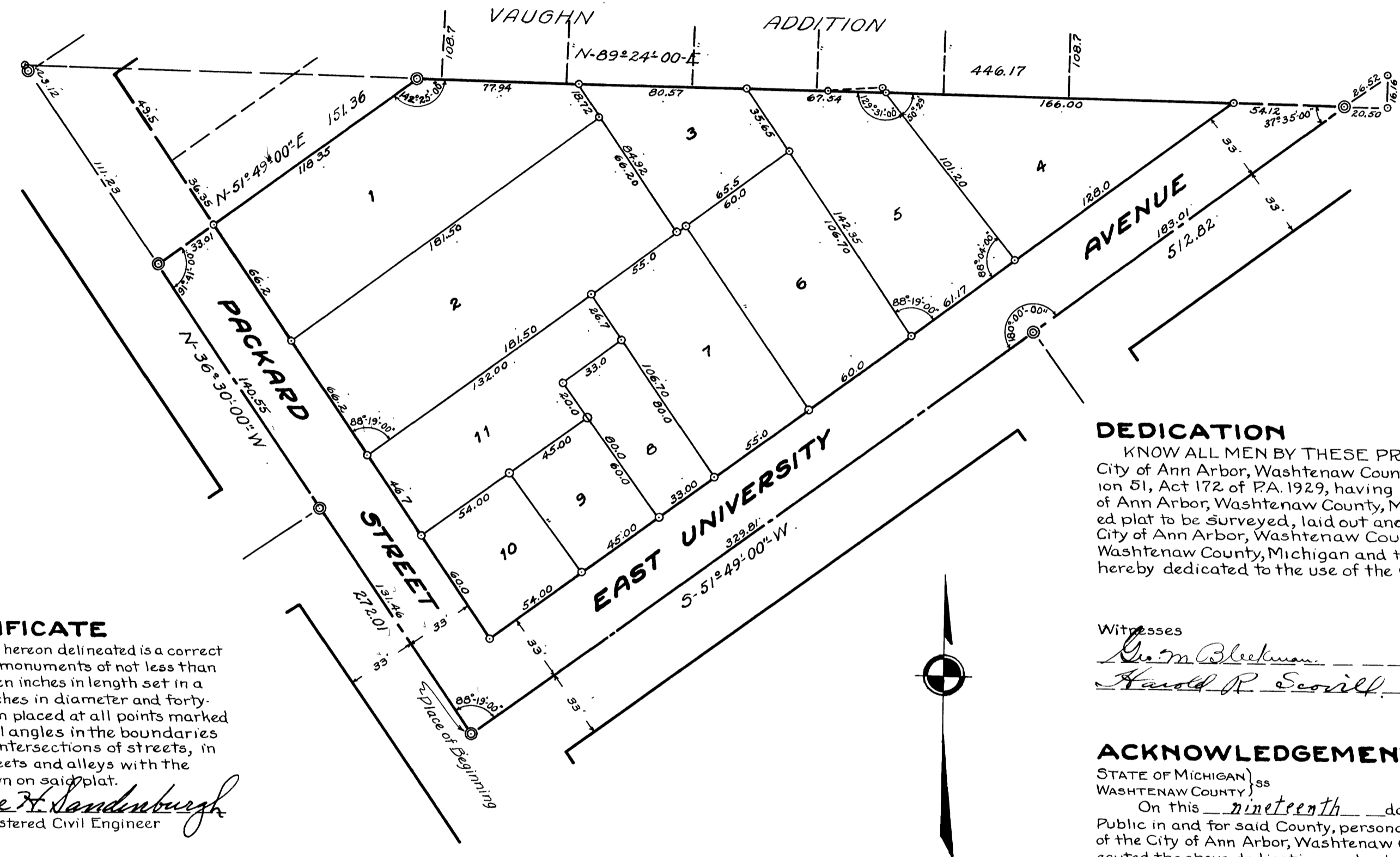
# ASSESSOR'S PLAT No 23 IN THE CITY OF ANN ARBOR, WASHTENAW CO, MICHIGAN.

SCALE 1"=50'

1 of 1  
ASSESSOR'S PLAT No. 23  
PAGE 17  
02/18/1932

Mar 17-1932  
Geo L. Howell  
Herbert W. Crippen GENERAL

Mar 24-1930  
Geo L. Howell



### SURVEYOR'S CERTIFICATE

I hereby certify that the plat hereon delineated is a correct one and that permanent metal monuments of not less than one inch in diameter and fifteen inches in length set in a concrete base at least four inches in diameter and forty-eight inches in depth have been placed at all points marked thus: ⊙ as thereon shown at all the intersections in the boundaries of the land platted, at all the intersections of streets, in intersections of alleys, or of streets and alleys with the boundaries of the plat as shown on said plat.

*George H. Sandenburgh*  
Registered Civil Engineer

### CERTIFICATE OF MUNICIPAL APPROVAL

This plat was approved by the Common Council of the City of Ann Arbor, Washtenaw County, Michigan at a meeting held Feb 11 1932

*Geo L. Howell*  
Clerk

This plat was approved by the Board of Public Works of the City of Ann Arbor, Washtenaw County, Michigan at a meeting held Jan 21 1932

*Geo L. Howell*  
Clerk

### DESCRIPTION

Commencing at the West Quarter Corner of Section 33, T.2.S, R.6.E. Washtenaw County, Michigan; thence Northerly along the West line of said Section 33, 588.06 feet; thence Easterly along the North line of C.H. Cady's Subdivision 1297.78 feet to the Center Line of Packard Street; thence N-36°30'00"W along the Center Line of Packard Street 645.60 feet to its intersection with the Center Line of East University Avenue which point is the Place of Beginning; thence N-36°30'00"W along the Center Line of Packard Street 272.01 feet; thence N-51°49'00"E along the South Line of VAUGHN ADDITION 151.36 feet; thence N-89°24'00"E along the South Line of VAUGHN ADDITION 446.17 feet to the Center Line of East University Avenue; thence S-51°49'00"W along the Center Line of East University Avenue 512.82 feet to the Place of Beginning.

### DEDICATION

KNOW ALL MEN BY THESE PRESENTS: That I Herbert W. Crippen, Assessor of the City of Ann Arbor, Washtenaw County, Michigan, by virtue of authority in me vested by Section 51, Act 172 of P.A. 1929, having been duly authorized by the Common Council of the City of Ann Arbor, Washtenaw County, Michigan have caused the land described in the annexed plat to be surveyed, laid out and platted to be known as "Assessor's PLAT No. 23 in the City of Ann Arbor, Washtenaw County, Michigan, being a part of Section 33, T.2.S, R.6.E., Washtenaw County, Michigan and that the streets and alleys as shown on said plat are hereby dedicated to the use of the public.

Witnesses  
*Geo M. Blackman*  
*Harold R. Scovill*

*Herbert W. Crippen*  
Assessor of the City of Ann Arbor,  
Washtenaw Co, Michigan.

### ACKNOWLEDGEMENT

STATE OF MICHIGAN }  
WASHTENAW COUNTY }  
On this nineteenth day of February A.D. 1932 before me, a Notary Public in and for said County, personally came the above named Herbert W. Crippen, Assessor of the City of Ann Arbor, Washtenaw County, Michigan known to me to be the person who executed the above dedication, and acknowledged the same to be his free act and deed as such Assessor.

*Ernest W. Warriner*  
Notary Public in and for Washtenaw County,  
Michigan.

My Commission expires \_\_\_\_\_

### CERTIFICATE OF APPROVAL BY BOARD OF COUNTY AUDITORS

Approved by the Board of County Auditors of Washtenaw County, Michigan this 26 day of Feb 1932

*W. J. ...*  
Chairman  
*W. M. ...*  
*W. L. ...*

Handwritten notes and dates at the bottom right corner, including "17/11/33".