

(copy)

Mar 17-1932
Geo B. Hauer

ASSESSOR'S PLAT No 18 IN THE CITY OF ANN ARBOR, WASHTENAW CO, MICHIGAN.

SCALE 1"=100'

DEDICATION

KNOW ALL MEN BY THESE PRESENTS: That I Herbert W. Crippen, Assessor of the City of Ann Arbor, Washtenaw Co., Michigan, by virtue of authority in me vested by Section 51, Act 172 P.A. of 1929, having been duly authorized by the Common Council of the City of Ann Arbor, Washtenaw County, Michigan, have caused the land described in the annexed plat to be surveyed, laid out and platted to be known as "Assessor's Plat No. 18" in the City of Ann Arbor, Washtenaw County, Michigan, and that the streets and alleys as shown on said plat are hereby dedicated to the use of the public.

Herbert W. Crippen
Assessor of the City of Ann Arbor,
Washtenaw Co., Mich.

Witnesses
Geo. M. Beckman
Harold R. Scott

ACKNOWLEDGMENT

STATE OF MICHIGAN
COUNTY OF WASHTENAW } ss

On this twentieth day of February A.D. 1932 before me, a Notary Public in and for said County, personally came the above named Herbert W. Crippen, Assessor of the City of Ann Arbor, Washtenaw County, Michigan, known to me to be the person who executed the above dedication, and acknowledged the same to be his free act and deed as such Assessor.

Ernst W. Warriner
Notary Public in and for Washtenaw Co.,
Michigan.

My Commission expires _____

SURVEYOR'S CERTIFICATE

I hereby certify that the plat hereon delineated is a correct one and that permanent metal monuments of not less than one inch in diameter and fifteen inches in length set in a concrete base at least four inches in diameter and fourty eight inches in length have been placed at points marked thus: © as here on shown at all angles in the boundaries of the land platted, at all the intersections of streets, intersections of streets and alleys, or of alleys, and at the intersections of streets and alleys with the boundaries of the plat as shown on said plat.

George H. Sandenburgh
Registered Civil Engineer.

CERTIFICATE OF MUNICIPAL APPROVAL

This plat was approved by the Common Council of the City of Ann Arbor, Washtenaw Co., Michigan at a meeting held Feb 17 1932

Julia Perry
Clerk

This plat was approved by the Board of Public Works of the City of Ann Arbor, Washtenaw Co., Michigan at a meeting held Jan 20 1932

Julia Perry
Clerk

CERTIFICATE OF APPROVAL BY BOARD OF COUNTY AUDITORS.

Approved by the Board of County Auditors of Washtenaw County, Michigan this 26 day of Feb 26 1932

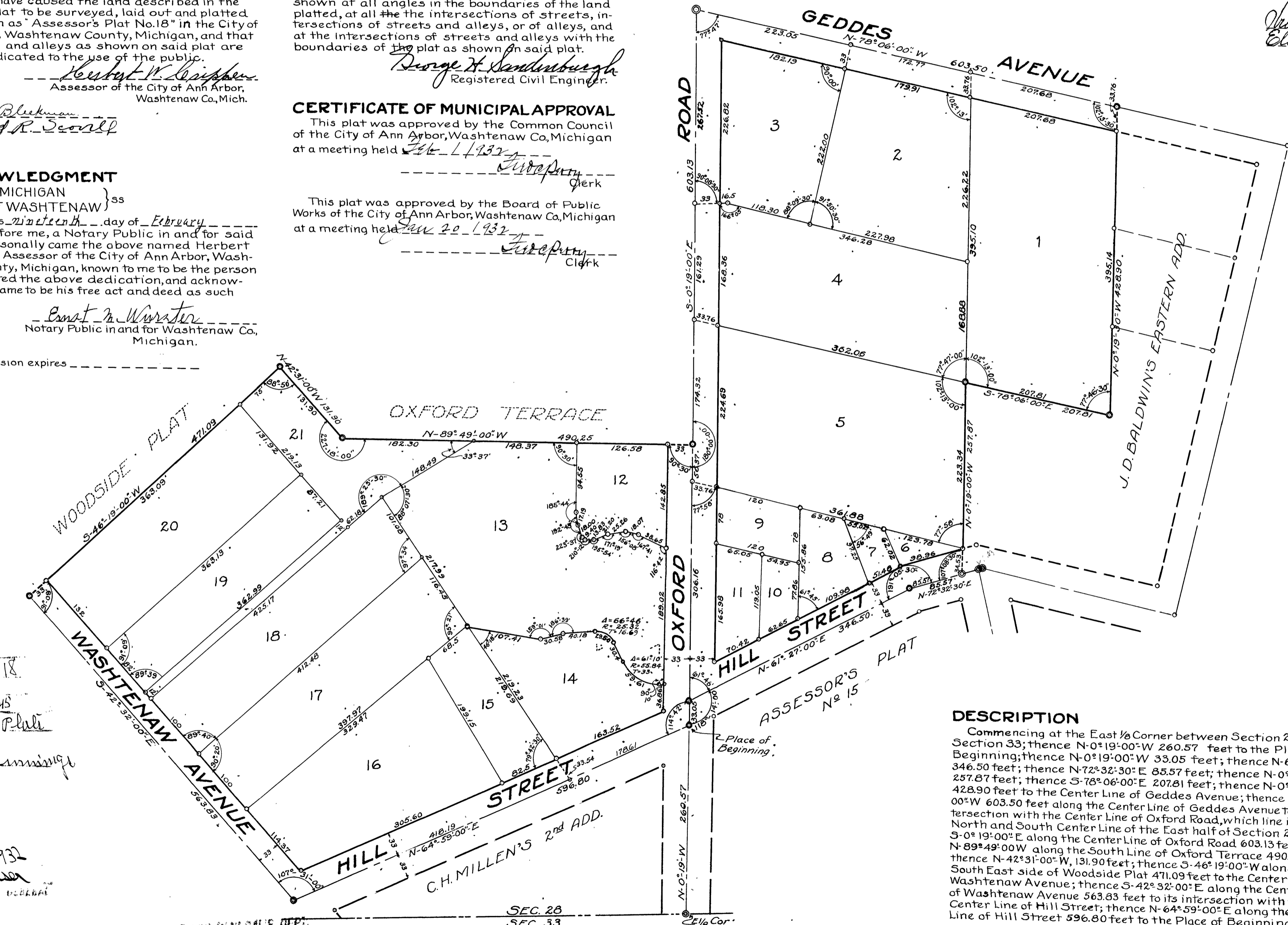
L. O. Quashling
Chairman
Walter M. Fowler
Oliver L. Brown

1 of 1
03/18/1932
FOODSCHOOL
ASSESSOR'S PLAT NO. 18
ANN ARBOR, MICHIGAN

Washenaw
Assessor's Plat No 18
Mar 9 1932
John S. Cunningham

Mar 17-1932
Geo B. Hauer

FILED IN REGISTER GENERAL'S DEPT.
Mar 24-1932
Geo B. Hauer



DESCRIPTION

Commencing at the East 1/8 Corner between Section 28 and Section 33; thence N-0°19'-00"W 260.57 feet to the Place of Beginning; thence N-0°19'-00"W 33.05 feet; thence N-61°27'-00"E 346.50 feet; thence N-72°32'-30"E 85.57 feet; thence N-0°19'-00"W 257.87 feet; thence S-78°06'-00"E 207.81 feet; thence N-0°19'-30"W 428.90 feet to the Center Line of Geddes Avenue; thence N-78°06'-00"W 603.50 feet along the Center Line of Geddes Avenue to its intersection with the Center Line of Oxford Road, which line is the North and South Center Line of Oxford Road; thence S-0°19'-00"E along the Center Line of the East half of Section 28; thence N-89°49'-00"W along the South Line of Oxford Terrace 490.25 feet; thence N-42°31'-00"W, 131.90 feet; thence S-46°19'-00"W along the South East side of Woodside Plat 471.09 feet to the Center Line of Washtenaw Avenue; thence S-42°32'-00"E along the Center Line of Washtenaw Avenue 563.83 feet to its intersection with the Center Line of Hill Street; thence N-64°59'-00"E along the Center Line of Hill Street 596.80 feet to the Place of Beginning.

Handwritten notes and signatures at the bottom right corner.