

ASSESSOR'S PLAT NO. 13 IN THE CITY OF ANN ARBOR, WASHTENAW CO., MICHIGAN.

*Oct. 16-1930
J. L. House*

SCALE
1 INCH = 60 FT.

DEDICATION

KNOW ALL MEN BY THESE PRESENTS: That I Herbert W. Crippen, Assessor of the City of Ann Arbor, Washtenaw County, Michigan by virtue of authority in me vested by Section 51, Act 172 P.A. of 1929 having been duly authorized by the Common Council of the City of Ann Arbor, Washtenaw County, Michigan have caused the land described in the annexed plat to be surveyed, laid out, and platted to be known as "Assessor's Plat No. 13" of the City of Ann Arbor, Washtenaw County, Michigan, and that the streets and alleys as shown on said plat are hereby dedicated to the use of the public.

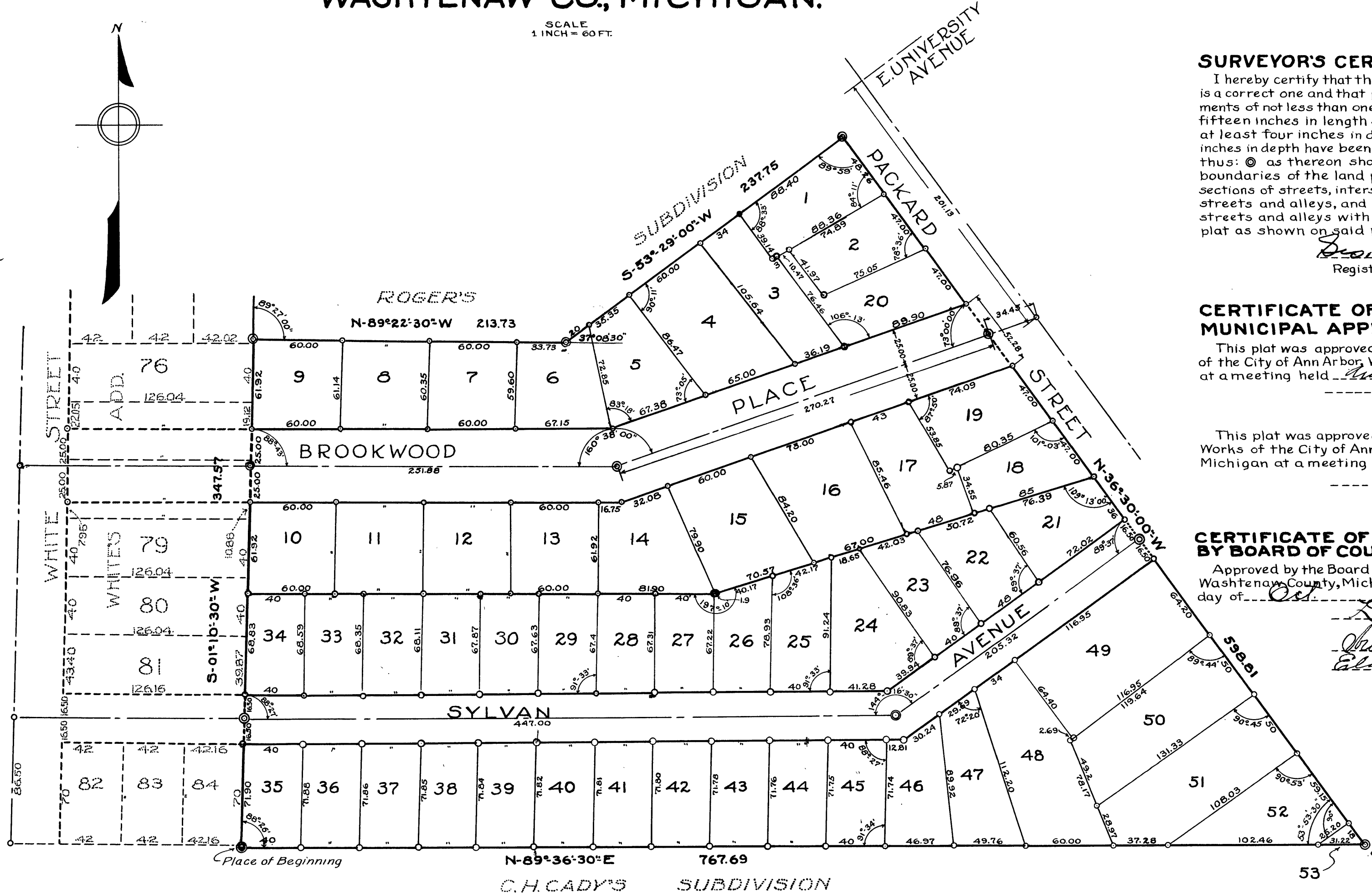
Witnesses:
H. W. Crippen Assessor of the City of Ann Arbor, Washtenaw Co., Michigan.
J. P. Scovell
Wm. Stukunas

ACKNOWLEDGMENT

STATE OF MICHIGAN)
 COUNTY OF WASHTENAW)
 On this 22nd day of Sept A.D. 1930, before me, a Notary Public in and for said County, personally came the above named Herbert W. Crippen, Assessor of the City of Ann Arbor, Washtenaw County, Michigan, known to me to be the person who executed the above dedication, and acknowledged the same to be his free act and deed as such Assessor.
Wm. W. Winters
 Notary Public in and for Washtenaw County.
 My Commission expires Sept. 29, 1931

DESCRIPTION

Commencing at the West Quarter Corner of Section 33, T. 2. S., R. 6. E., Washtenaw County, Michigan thence Northerly along the West line of said Section 33, 588.06 feet, thence Easterly along the North line of C.H. Cady's Subdivision 489.25 feet to the Place of Beginning, thence N-89°36'30" E 767.69 feet along the North line of C.H. Cady's Subdivision to the West line of Packard Street, thence N-36°30'00" W, 598.81 feet, thence S-53°29'00" W along the South line of Roger's Subdivision 237.75 feet, thence N-89°22'30" W along the South line of Roger's Subdivision 213.73 feet to the East line of White's Addition, thence S-01°10'30" W along the East line of White's Addition 347.57 feet to Place of Beginning.



SURVEYOR'S CERTIFICATE

I hereby certify that the plat hereon delineated is a correct one and that permanent metal monuments of not less than one inch in diameter and fifteen inches in length set in a concrete base at least four inches in diameter and forty-eight inches in depth have been placed at points marked thus: © as thereon shown at all angles in the boundaries of the land platted, at all the intersections of streets, intersections of alleys, or of streets and alleys, and at the intersections of streets and alleys with the boundaries of the plat as shown on said plat.

Scott Sandenburgh
Registered Civil Engineer.

CERTIFICATE OF MUNICIPAL APPROVAL

This plat was approved by the Common Council of the City of Ann Arbor, Washtenaw Co., Michigan at a meeting held August 4, 1930

This plat was approved by the Board of Public Works of the City of Ann Arbor, Washtenaw Co., Michigan at a meeting held May 7, 1930

CERTIFICATE OF APPROVAL BY BOARD OF COUNTY AUDITORS

Approved by the Board of County Auditors of Washtenaw County, Michigan this 22nd day of Oct, 1930

COPY/ST/DT T 40 1

Washtenaw
Assessor Plat No 13
18"
Oct 30 1930
John S. Cummings
Oct 16-1930
J. L. House
Oct 21-1930
J. L. House

Handwritten mark